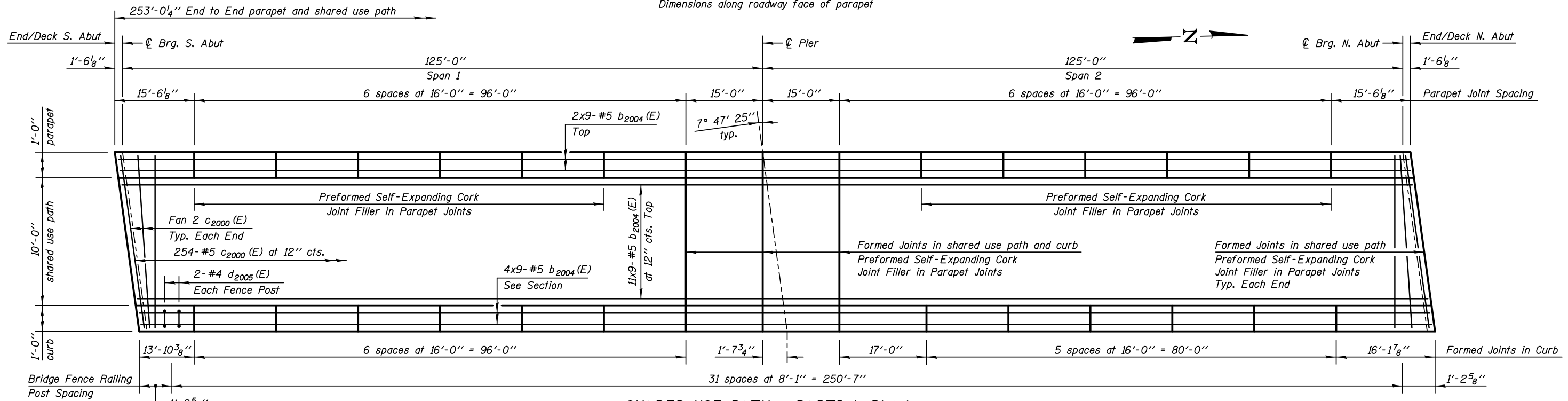
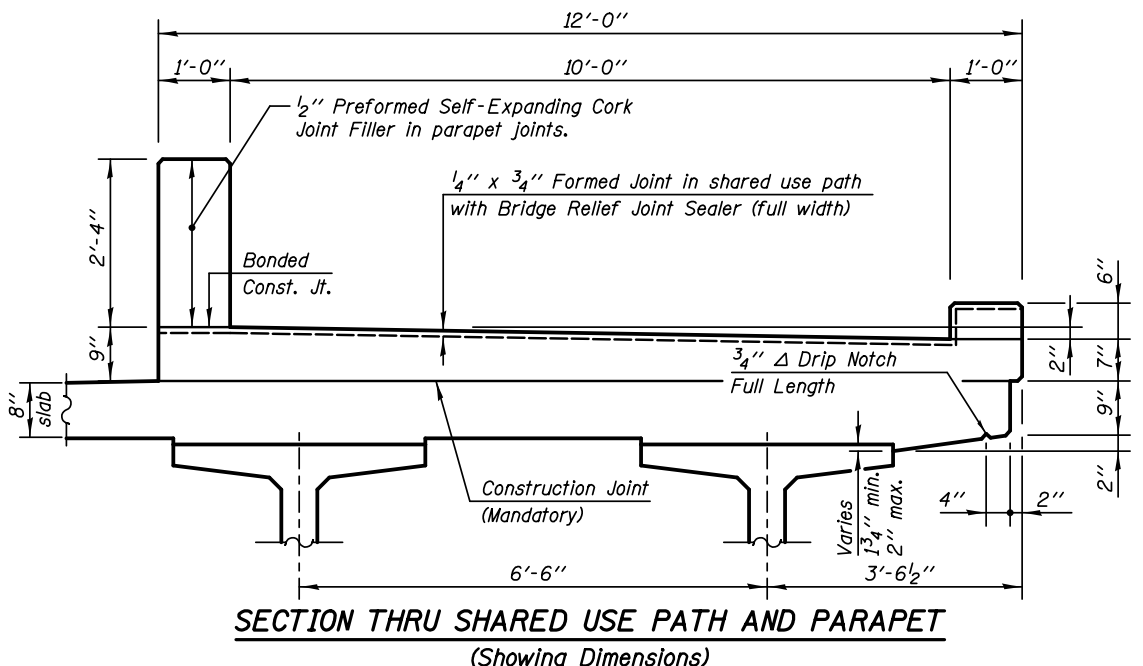


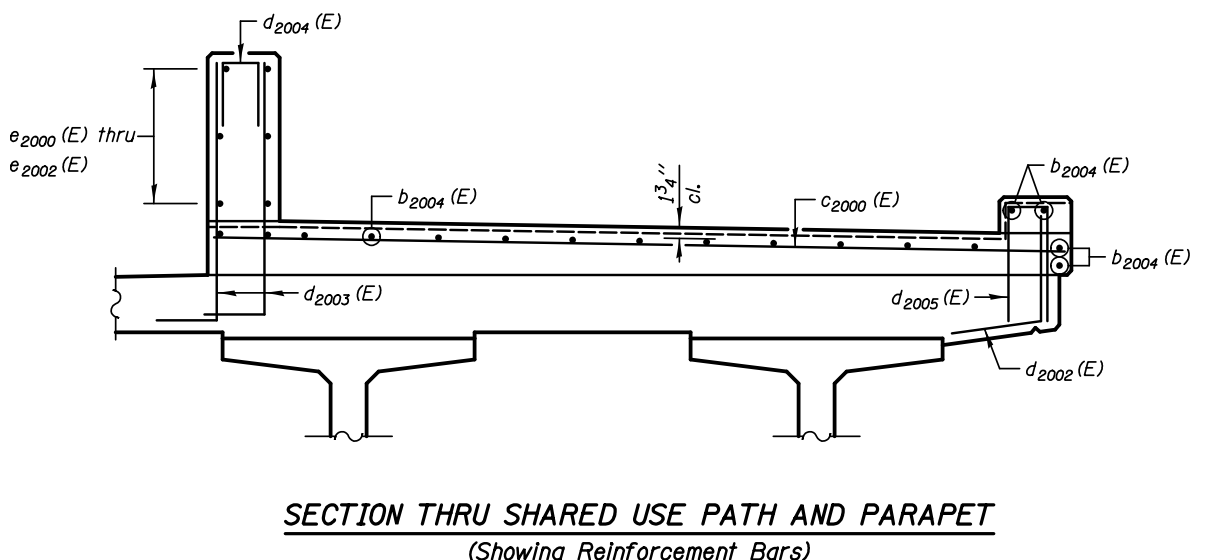
INSIDE ELEVATION OF PARAPET
Dimensions along roadway face of parapet



SHARED USE PATH - PARTIAL PLAN



SECTION THRU SHARED USE PATH AND PARAPET
(Showing Dimensions)



SECTION THRU SHARED USE PATH AND PARAPET
(Showing Reinforcement Bars)

Notes:
 Bars indicated thus 20 x 3-#5 etc. indicates 20 lines of bars with 3 lengths per line.
 See Sheet SA-29 for Cork Filled Parapet Joint Detail
 See Sheet SA-29 for Deck Misc. Details and Bill of Materials.
 See Sheet SA-38 for Bridge Fence Railing, Sidewalk Mounted Details

MIN. BAR LAPS:
#5 = 3'-3"

KNIGHT
Engineers & Architects

| | |
|-------------------|--------|
| DESIGNED - WPM | REVISD |
| CHECKED - TB | REVISD |
| DRAWN - TB | REVISD |
| CHECKED - WPM | REVISD |
| SCALE - NONE | |
| DATE - 10/15/2012 | |

STATE OF ILLINOIS
DEPARTMENT OF TRANSPORTATION

SHARED USE PATH AND PARAPET DETAILS (NB)
 S.N. 022-2029 (SB) TOLLWAY B.N. 826
 S.N. 022-2030 (NB) TOLLWAY B.N. 825
 SHEET NO. SA-26 OF 63 SHEETS

| F.A.P. RTE. | SECTION | COUNTY | TOTAL SHEETS | SHEET NO. |
|---------------------------|-------------------|--------|--------------|-----------|
| 338 | (112 & 113) WRS-5 | DUPAGE | 963 | 610 |
| CONTRACT NO. 60131 | | | | |
| ILLINOIS FED. AID PROJECT | | | | |