
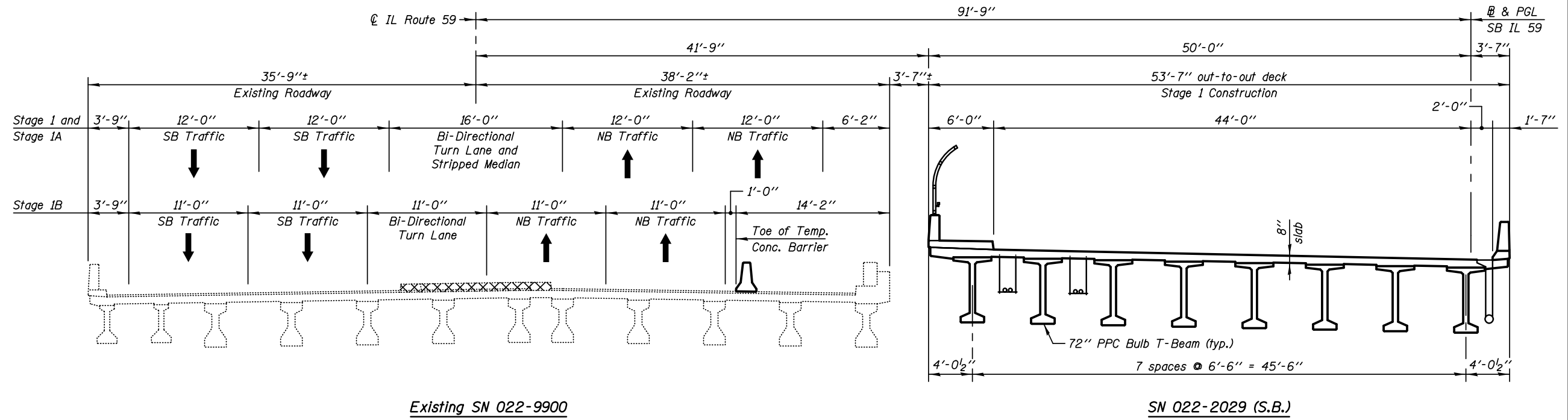


**LEGEND**

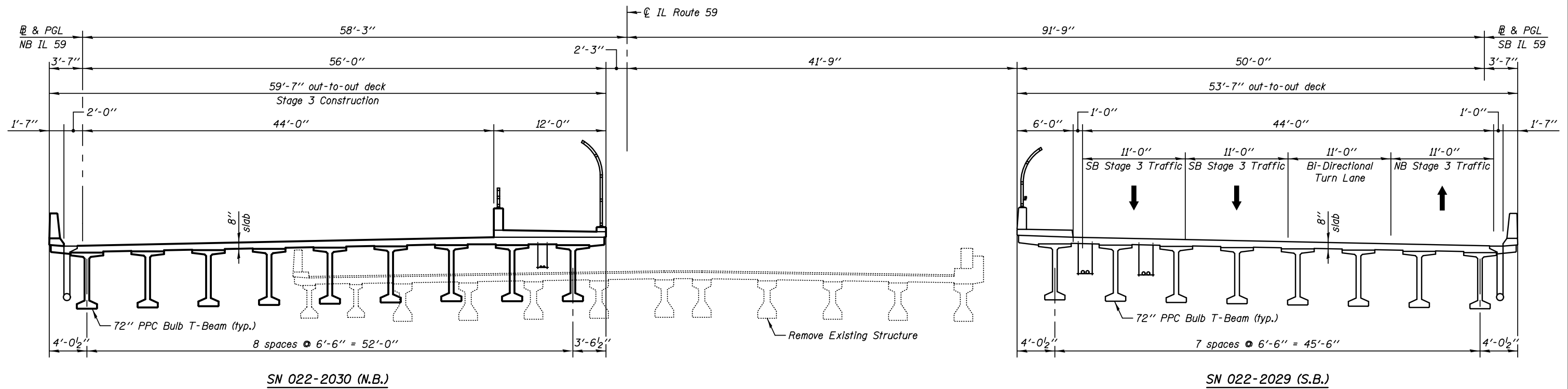
 Pre-Stage Removal



Existing SN 022-9900

SN 022-2029 (S.B.)

**STAGE 1 CONSTRUCTION**  
(Looking North)



SN 022-2030 (N.B.)

SN 022-2029 (S.B.)

**STAGE 3 CONSTRUCTION**  
(Looking North)

**Notes:**

Stage 2 Construction consists of roadway work outside the limits of the structure.

See Roadway Plans for quantity of Temporary Concrete Barrier.

**KNIGHT**  
Engineers & Architects

SCALE - NONE  
DATE - 10/15/2012

DESIGNED - WPM  
CHECKED - TB  
DRAWN - TB  
CHECKED - WPM

REVISED  
REVISED  
REVISED  
REVISED

STATE OF ILLINOIS  
DEPARTMENT OF TRANSPORTATION

**STAGE CONSTRUCTION DETAILS**  
S.N. 022-2029 (SB) TOLLWAY B.N. 826  
S.N. 022-2030 (NB) TOLLWAY B.N. 825  
SHEET NO. SA-07 OF 63 SHEETS

F.A.P. RTE.	SECTION	COUNTY	TOTAL SHEETS	SHEET NO.
338	(112 & 113) WRS-5	DUPAGE	963	591
CONTRACT NO. 60131				
ILLINOIS FED. AID PROJECT				