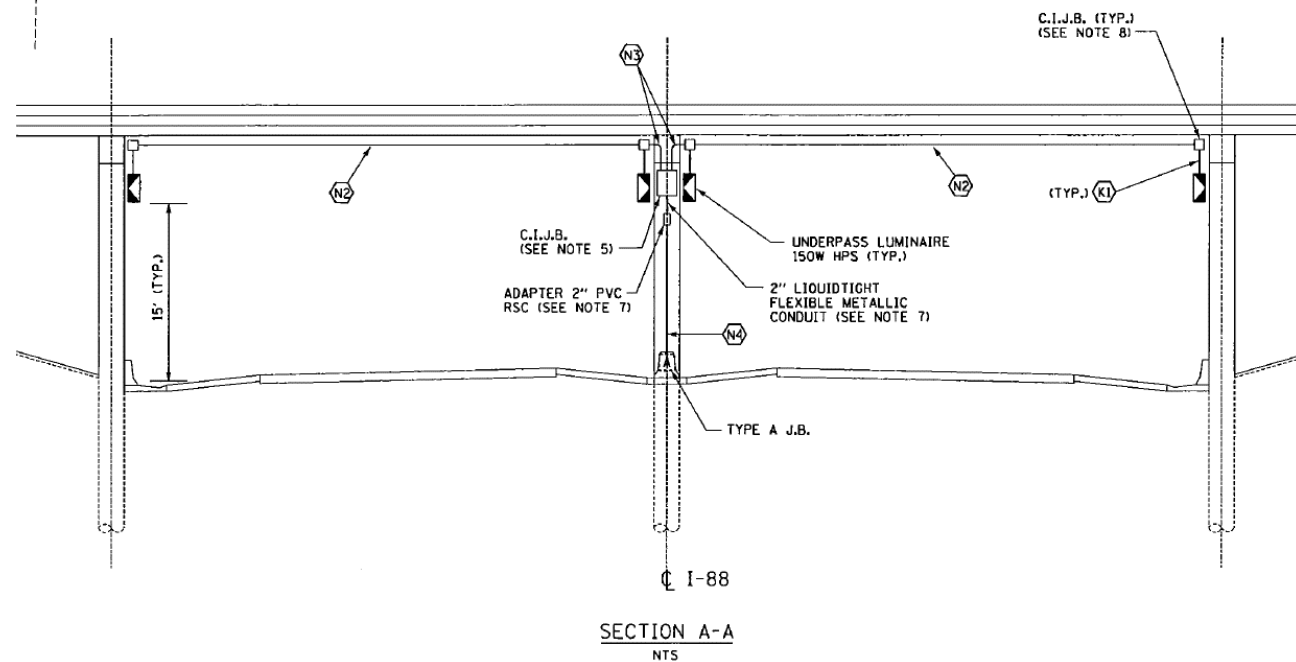
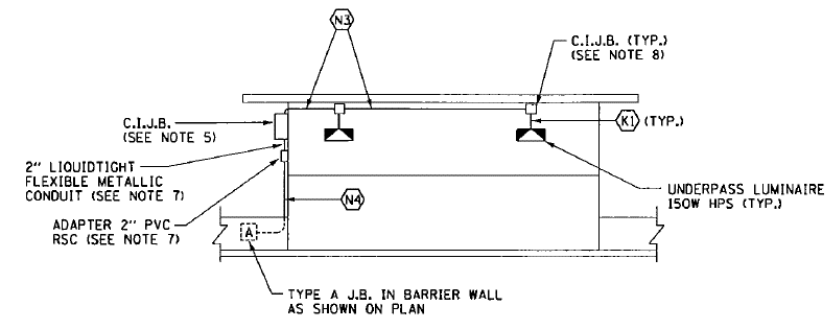


PLAN
NTS



SECTION A-A
NTS



ELEVATION OF PIER
NTS

CABLE GROUPING LEGEND

- (K1) 3/4" PVC COATED RGS CONDUIT, 2 *10 AND 1 *10 GROUND (ALL 600V TYPE XHHW) ATTACHED TO STRUCTURE
- (N2) 1" PVC COATED RGS CONDUIT, 2 *10 AND 1 *10 GROUND (ALL 600V TYPE XHHW) ATTACHED TO STRUCTURE
- (N3) 1" PVC COATED RGS CONDUIT, 4 *10 AND 1 *10 GROUND (ALL 600V TYPE XHHW) ATTACHED TO STRUCTURE
- (N4) 2" PVC COATED RGS CONDUIT, 4 *10 AND 1 *10 GROUND (ALL 600V TYPE XHHW) ATTACHED TO STRUCTURE

NOTES:

1. EXPANSION FITTINGS SHALL BE FURNISHED AND INSTALLED IN CONDUIT RUNS AT ALL STRUCTURAL EXPANSION JOINTS.
2. PVC COATED CONDUIT CLAMP AND CLAMP BACK ON 5'-0" CENTERS, (TYPICAL) ATTACH WITH EXPANSION ANCHORS (MIN. 2" LONG) EXPANSION ANCHORS SHALL BE HOT DIPPED GALVANIZED AS MADE BY PARABOLT KWIK-BOLT OR WEJ-IT.
3. EXPANSION FITTINGS AT WALL JOINTS SHALL BE O.Z. GEDNEY TYPE DX EXPANSION-DEFLECTION FITTINGS OR APPROVED EQUAL ALLOWING A MOVEMENT OF 3/4" IN ALL DIRECTIONS AND A DEFLECTION OF 30° FROM NORMAL IN ALL DIRECTIONS.
4. ALL 5-KV CABLE IN CABLE DUCT SHALL BE TESTED PRIOR TO CONNECTING ANY 600 VOLT CABLE SERVING THE WALL MOUNTED LIGHTING.
5. 12"X8"X6" CAST IRON (C.I.) JUNCTION BOX WITH 4 BUSS HEB RCL-A "TRON" IN-LINE FUSE HOLDERS & FUSES FOR WALL MOUNTED LUMINAIRE CIRCUITS, FUSES & HOLDERS WILL BE CONSIDERED AS INCIDENTAL TO C.I.J.B. (12"X8"X6").
6. LUMINAIRES SHALL BE SURFACE MOUNTED TO WALL WITH LUMISTRUT P5500 STAINLESS STEEL CHANNELS (1/2 GAUGE) TO PROVIDE A MINIMUM CLEARANCE OF 2" BETWEEN THE BACK OF LUMINAIRE AND THE FACE OF THE WALL.
7. CONDUIT CONTAINS 4 *10 AND 1 *10 GROUND (ALL 600V TYPE XHHW). FITTING AND LIQUIDTIGHT METALLIC CONDUIT ARE INCIDENTAL TO C.I.J.B. (12"X8"X6"), NO ADDITIONAL COMPENSATION WILL BE ALLOWED.
8. CAST IRON JUNCTION BOX (C.I.J.B.), 4"X4"X3".
9. LOCATE CENTERLINE OF 45' LUMINAIRE SPACING AT CENTERLINE OF ILLINOIS ROUTE 59 OVERPASS.

RD-35

DRAWN BY JDM SCALE NONE
CHECKED BY SM DATE 3/1/05

K&E KAM ENGINEERING, INC.
CONSULTING ENGINEERS
707A Davis Road, Suite 205
Elgin, Illinois 60123-1369

THE ILLINOIS STATE TOLL HIGHWAY AUTHORITY
2700 OGDEN AVENUE
DOWNERS GROVE, ILLINOIS 60515

REVISIONS		
NO.	DATE	DESCRIPTION
1	3/01/05	NEW SHEET

CONTRACT NO. RR-04-5198
UNDERPASS LIGHTING
I-88 UNDER IL RT 59

DRAWING NO.
306 OF 601

FOR INFORMATION ONLY

FILE NAME =	USER NAME = #USER*	DESIGNED MCP	REVISED -
#FILE#		DRAWN MLB	REVISED -
	PLOT SCALE = #SCALE*	CHECKED MCP	REVISED -
	PLOT DATE = #DATE*	DATE 10/15/2012	REVISED -

**STATE OF ILLINOIS
DEPARTMENT OF TRANSPORTATION**

**EXISTING LIGHTING PLAN
(FOR REFERENCE)**
SCALE: AS SHOWN SHEET NO. 9 OF 9 SHEETS STA. 4038+00 TO STA. 4044+00

F.A.P. RTE.	SECTION	COUNTY	TOTAL SHEETS	SHEET NO.
338	(112 & 113) WRS-5	DUPAGE	963	584
LT-29			CONTRACT NO. 60131	
ILLINOIS FED. AID PROJECT				