

**PLAN DETAIL "A"**  
 ☉ Span between Panel Points

**PLAN DETAIL "B"**  
 ☉ Span at Panel Point

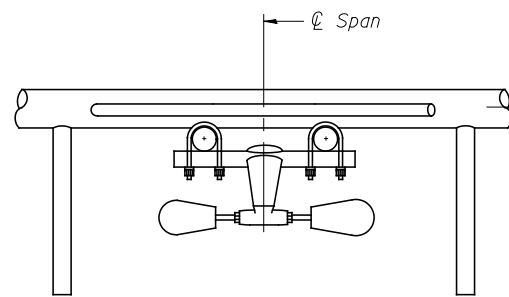
**PLAN DETAIL "C"**  
 ☉ Span at ☉ Chord Splice

\* Center of horizontal to center of splice dimension may vary. Verify before drilling holes in mounting tube.

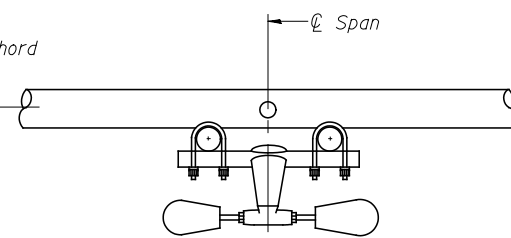
**NOTES**

Damper: One damper per truss. (31 lbs. minimum Stockbridge-Type Aluminum - 29" minimum between ends of weights) Cost included in Overhead Sign Structure...

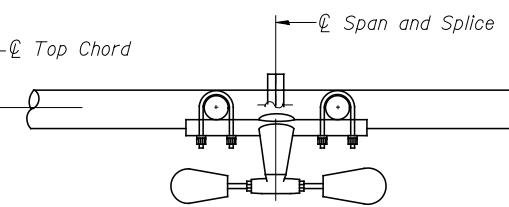
Materials: Materials: Aluminum tubes shall be ASTM B221 alloy 6061 temper T6. Cost included in Overhead Sign Structure...



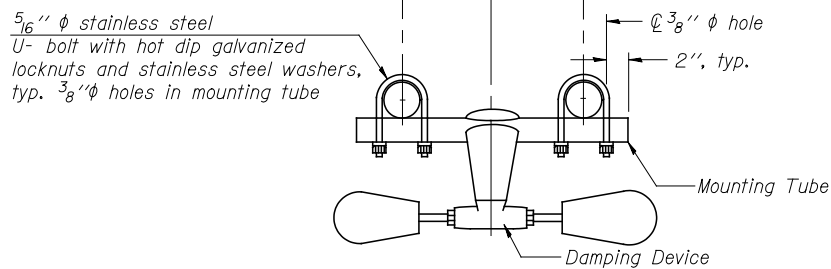
**SECTION A-A**



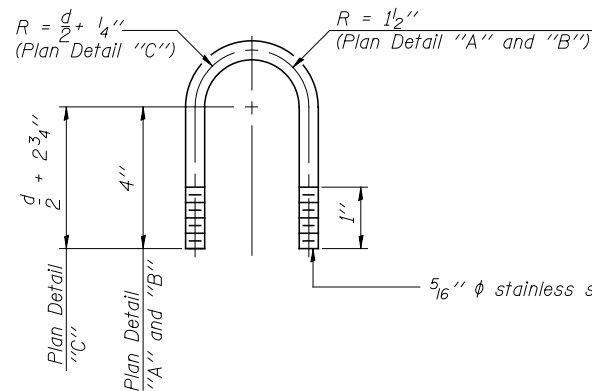
**SECTION B-B**



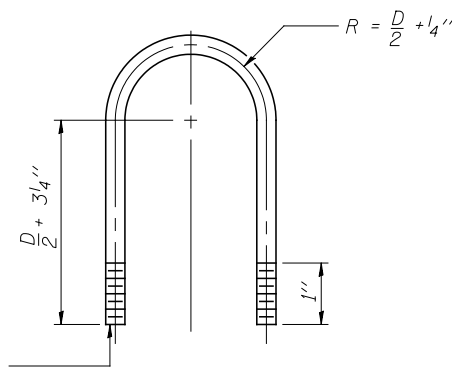
**SECTION C-C**



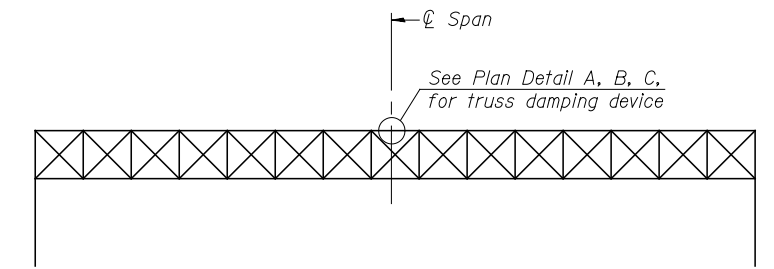
**TRUSS DAMPING DEVICE CONNECTION DETAIL**  
 (Typical)



**DAMPING DEVICE MOUNTING TUBE U-BOLT DETAIL**  
 (Typical)



**TOP CHORD TO CROSS TUBE U-BOLT DETAIL**  
 (Typical - Detail "A" and "B")



**ELEVATION**  
 Aluminum Overhead Sign Truss

OS-A-D

6-1-12

FILE NAME =	USER NAME = #USER#	DESIGNED PJO	REVISED -
#FILE#		DRAWN KES	REVISED -
		CHECKED JCM	REVISED -
		DATE 10/15/2012	REVISED -

**STATE OF ILLINOIS  
 DEPARTMENT OF TRANSPORTATION**

**OVERHEAD SIGN STRUCTURE  
 DAMPING DEVICE**

SCALE: SHEET NO. 7 OF 15 SHEETS STA. TO STA.

F.A.P. RTE.	SECTION	COUNTY	TOTAL SHEETS	SHEET NO.
338	(112 & 113) WRS-5	DUPAGE	963	407
CONTRACT NO. 60I31				
ILLINOIS FED. AID PROJECT				