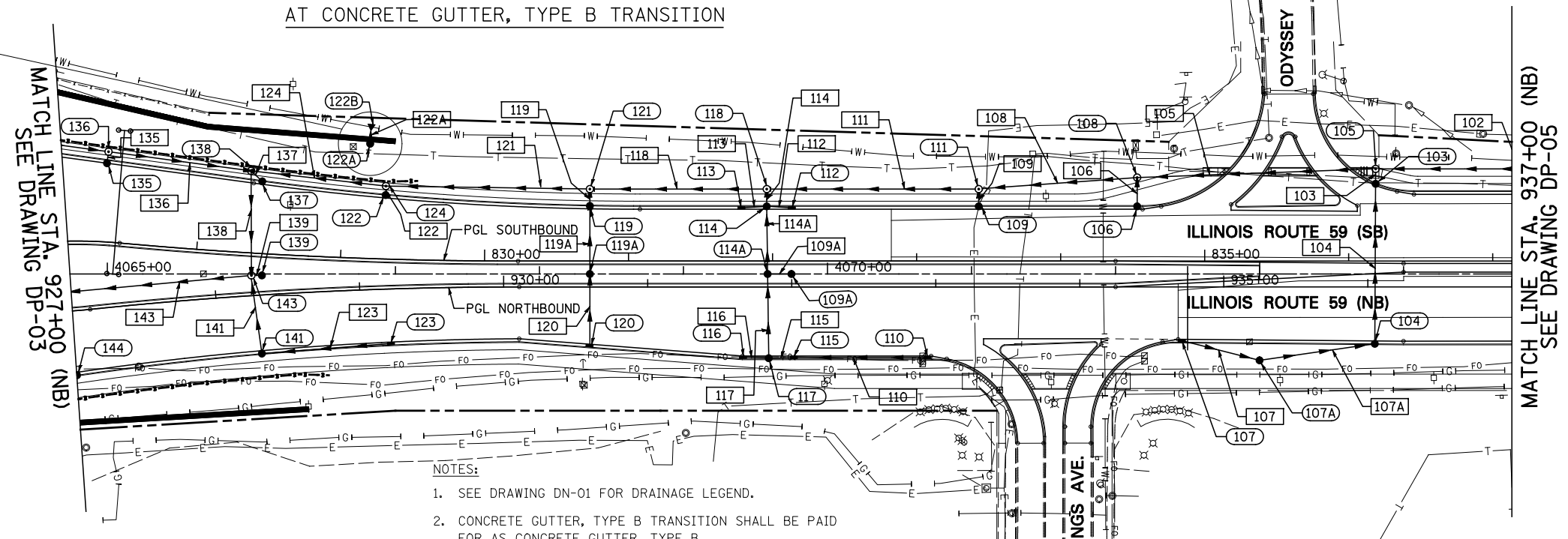
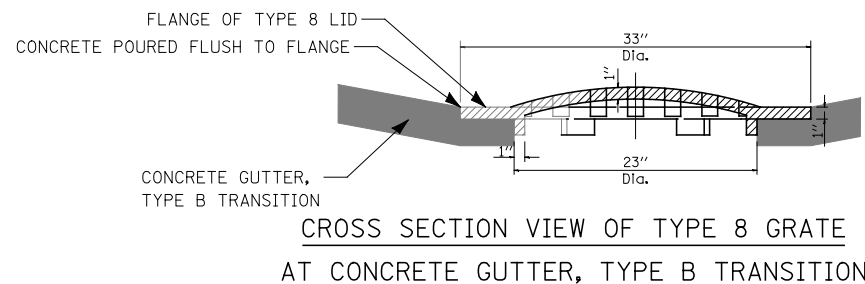
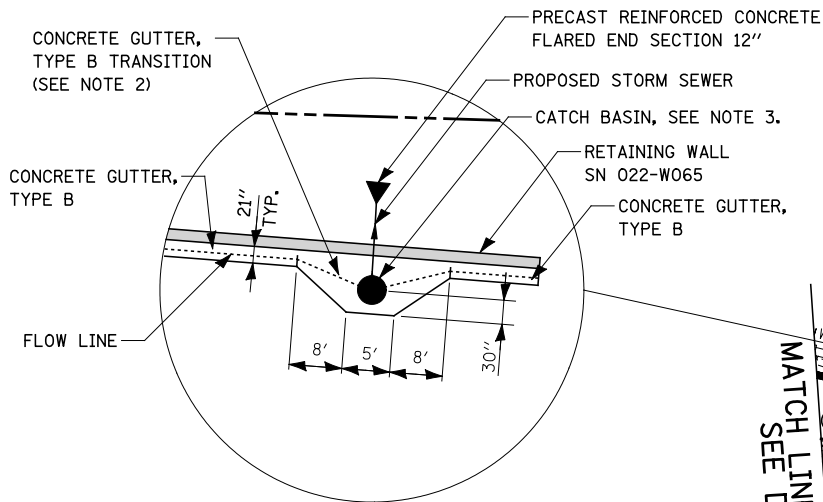
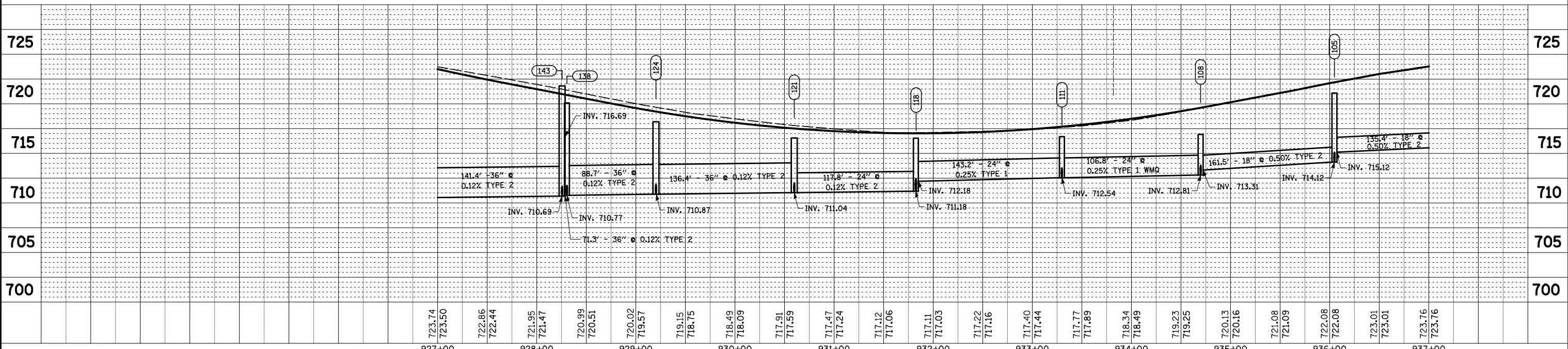
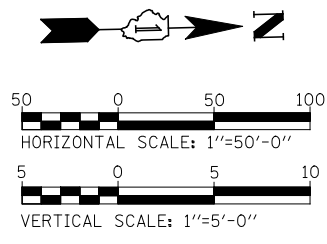


PLAN	SURVEYED	DATE
	PLOTTED	
	CHECKED	
	BY	
	NO.	

PROFILE	SURVEYED	DATE
	PLOTTED	
	CHECKED	
	BY	
	NO.	



- NOTES:
1. SEE DRAWING DN-01 FOR DRAINAGE LEGEND.
  2. CONCRETE GUTTER, TYPE B TRANSITION SHALL BE PAID FOR AS CONCRETE GUTTER, TYPE B.
  3. CATCH BASIN USES TYPE 8 GRATE. THE ONE INCH THICK FLANGE OF THE GRATE SHALL BE EMBEDDED IN THE CONCRETE GUTTER TYPE B TRANSITION AREA. CONCRETE SHALL BE FLUSH WITH TYPE 8 GRATE FLANGE. SEE CROSS SECTION DETAIL.
  4. TRENCHES WITHIN PAVEMENT RESURFACING AREA SHALL BE COVERED WITH CLASS D PATCHES, 14".



FILE NAME =	USER NAME = #USER#	DESIGNED <i>JWM</i>	REVISED -	<b>STATE OF ILLINOIS</b> <b>DEPARTMENT OF TRANSPORTATION</b>	<b>PROPOSED DRAINAGE PLAN &amp; PROFILE - ILLINOIS ROUTE 59</b> <b>OUTLET TO INFIELD OF RAMP B</b>	F.A.P. RTE.	SECTION	COUNTY	TOTAL SHEETS	SHEET NO.	
*FILEL#		DRAWN <i>KES</i>	REVISED -			338	(112 & 113) WRS-5	DUPAGE	963	341	
		CHECKED <i>JRS</i>	REVISED -			<b>DP-04</b>					
		DATE <i>10/15/2012</i>	REVISED -			CONTRACT NO. 60131					
					SCALE: 1"=50'	SHEET NO. 4 OF 12 SHEETS	STA. 927+00 TO STA. 937+00	FED. ROAD DIST. NO. ILLINOIS FED. AID PROJECT			