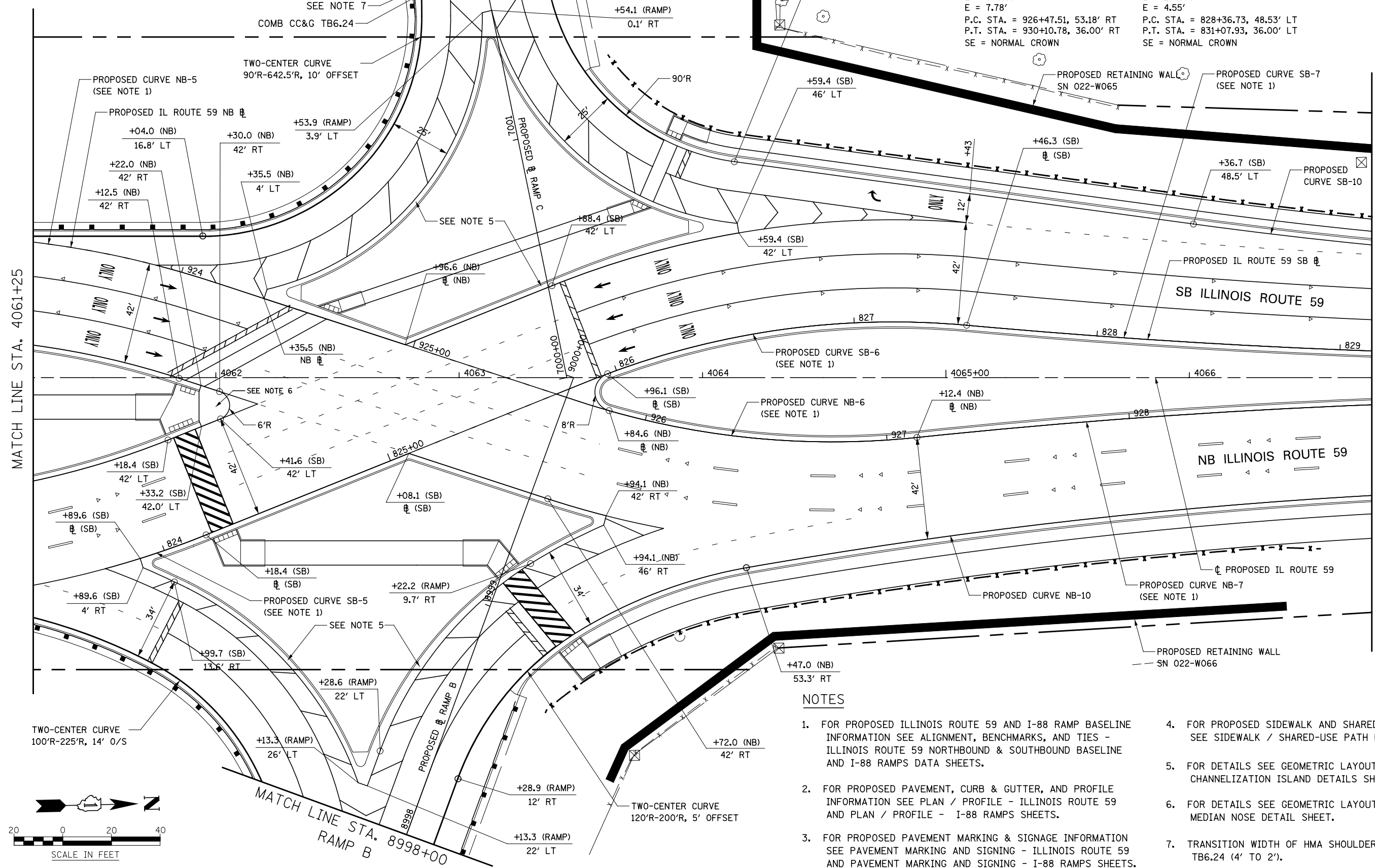


MATCH LINE STA. 7001+75  
RAMP C

PROPOSED CURVE NB-10  
PI STA. = 928+23.53, 30.97' RT  
 $\Delta = 9^\circ 37' 52.25''$  (RT)  
 $D = 2^\circ 36' 28.56''$   
 $R = 2,196.99'$   
 $T = 185.09'$   
 $L = 369.30'$   
 $E = 7.78'$   
P.C. STA. = 926+47.51, 53.18' RT  
P.T. STA. = 930+10.78, 36.00' RT  
SE = NORMAL CROWN

PROPOSED CURVE SB-10  
PI STA. = 829+72.66, 35.59' LT  
 $\Delta = 7^\circ 44' 07.35''$  (LT)  
 $D = 2^\circ 52' 34.69''$   
 $R = 1,992'$   
 $T = 134.67'$   
 $L = 268.94'$   
 $E = 4.55'$   
P.C. STA. = 828+36.73, 48.53' LT  
P.T. STA. = 831+07.93, 36.00' LT  
SE = NORMAL CROWN



**NOTES**

- FOR PROPOSED ILLINOIS ROUTE 59 AND I-88 RAMP BASELINE INFORMATION SEE ALIGNMENT, BENCHMARKS, AND TIES - ILLINOIS ROUTE 59 NORTHBOUND & SOUTHBOUND BASELINE AND I-88 RAMP DATA SHEETS.
- FOR PROPOSED PAVEMENT, CURB & GUTTER, AND PROFILE INFORMATION SEE PLAN / PROFILE - ILLINOIS ROUTE 59 AND PLAN / PROFILE - I-88 RAMP SHEETS.
- FOR PROPOSED PAVEMENT MARKING & SIGNAGE INFORMATION SEE PAVEMENT MARKING AND SIGNING - ILLINOIS ROUTE 59 AND PAVEMENT MARKING AND SIGNING - I-88 RAMP SHEETS.
- FOR PROPOSED SIDEWALK AND SHARED-USE PATH INFORMATION SEE SIDEWALK / SHARED-USE PATH PLANS.
- FOR DETAILS SEE GEOMETRIC LAYOUT - ILLINOIS ROUTE 59 CHANNELIZATION ISLAND DETAILS SHEET.
- FOR DETAILS SEE GEOMETRIC LAYOUT - ILLINOIS ROUTE 59 MEDIAN NOSE DETAIL SHEET.
- TRANSITION WIDTH OF HMA SHOULDER TO MEET COMB CC&G TB6.24 (4' TO 2').

FILE NAME =	USER NAME = *USER*	DESIGNED <i>PJO</i>	REVISED -	<b>STATE OF ILLINOIS DEPARTMENT OF TRANSPORTATION</b>	<b>GEOMETRIC LAYOUT - ILLINOIS ROUTE 59</b>	F.A.P. RTE.	SECTION	COUNTY	TOTAL SHEETS	SHEET NO.	
*FILE#		DRAWN <i>KES</i>	REVISED -			338	(112 & 113) WRS-5	DUPAGE	963	266	
	PLOT SCALE = *SCALE*	CHECKED <i>JCM</i>	REVISED -			CONTRACT NO. 60131					
	PLOT DATE = *DATE*	DATE <i>10/15/2012</i>	REVISED -			SCALE: AS SHOWN	SHEET NO. 4 OF 21 SHEETS	STA. 4061+25 TO STA. 4066+75	ILLINOIS FED. AID PROJECT		