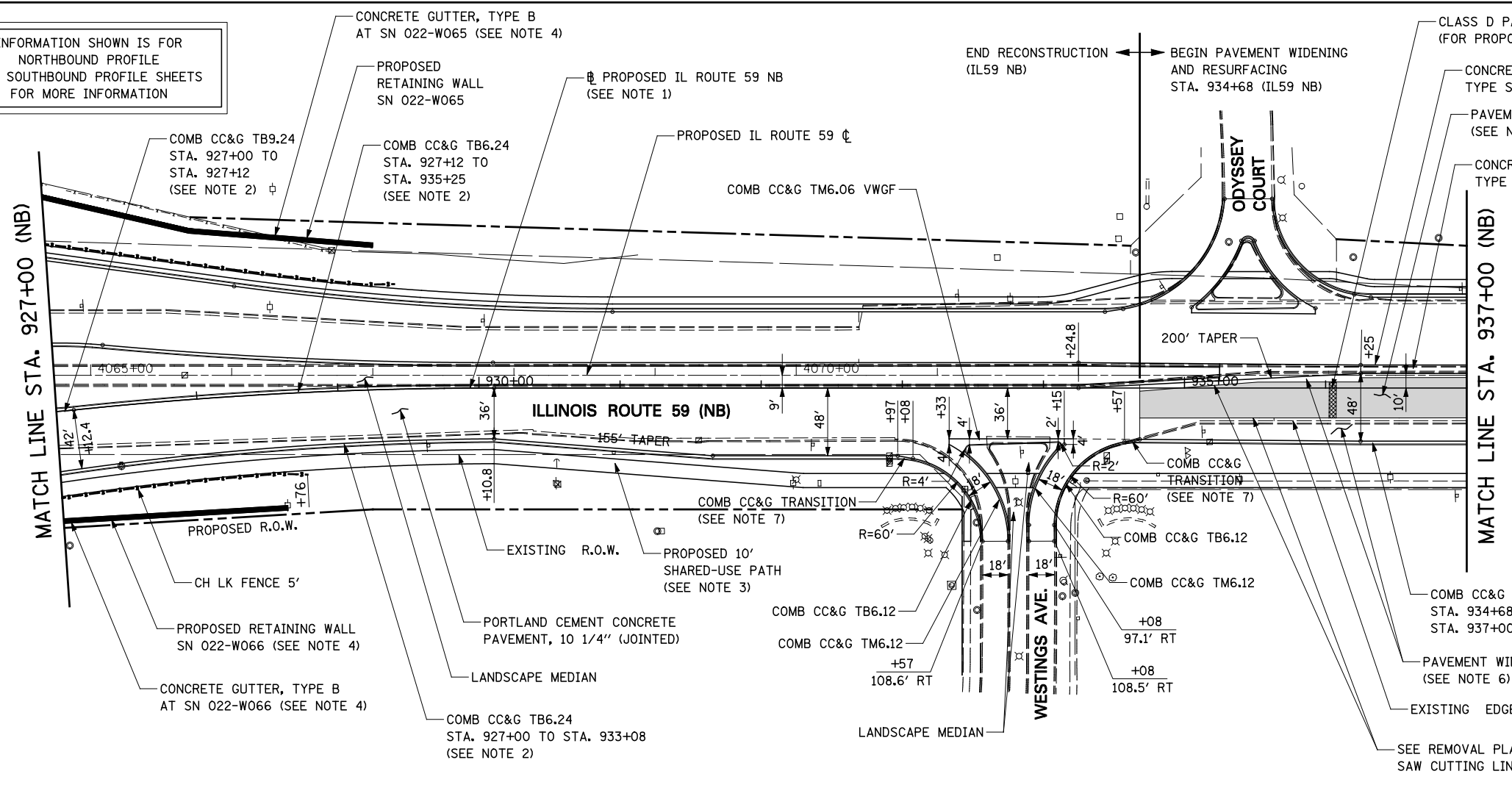


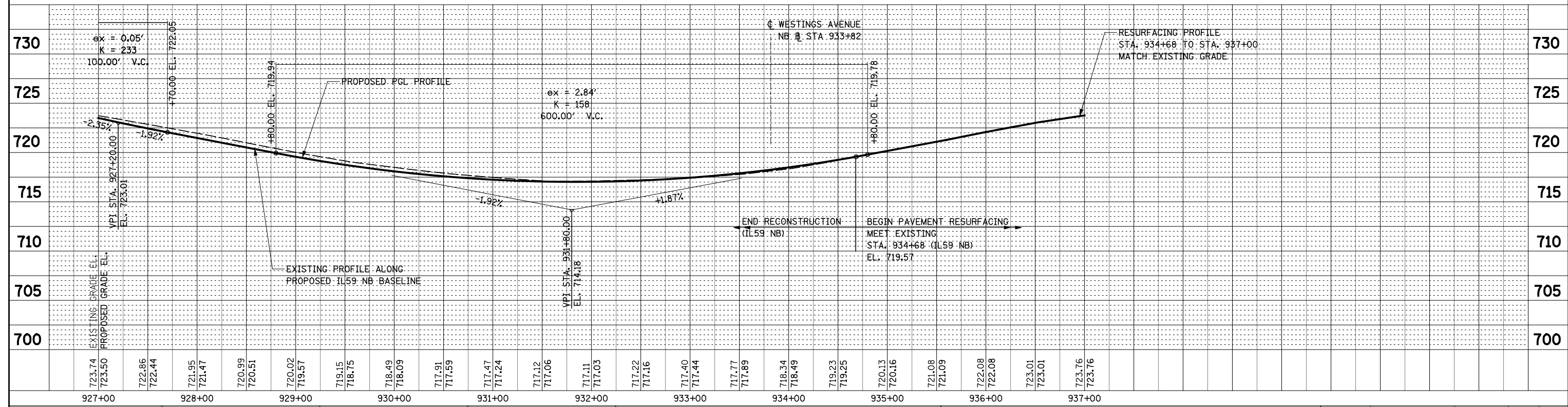
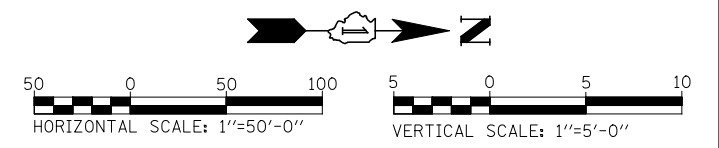
PLAN	SURVEYED	BY	DATE
	PLOTTED		
	CHECKED		
	AT		
	FILE NAME		
	NO.		

PROFILE	SURVEYED	BY	DATE
	PLOTTED		
	CHECKED		
	STRUCTURE		
	NOTATION		
	CHD		
	NO.		

INFORMATION SHOWN IS FOR NORTHBOUND PROFILE
SEE SOUTHBOUND PROFILE SHEETS FOR MORE INFORMATION



- NOTES**
- FOR PROPOSED ILLINOIS ROUTE 59 AND I-88 RAMP BASELINE INFORMATION SEE ALIGNMENT, BENCHMARKS, AND TIES - ILLINOIS ROUTE 59 NORTHBOUND & SOUTHBOUND BASELINE AND I-88 RAMP DATA SHEETS.
 - FOR PROPOSED ILLINOIS ROUTE 59 AND I-88 RAMP PAVEMENT GEOMETRY INFORMATION SEE GEOMETRIC LAYOUT - ILLINOIS ROUTE 59 AND GEOMETRIC LAYOUT - I-88 RAMP SHEETS.
 - FOR PROPOSED SIDEWALK, SHARED-USE PATH, AND FENCE INFORMATION SEE SIDEWALK / SHARED-USE PATH/ FENCE PLANS.
 - FOR PROPOSED BRIDGE STRUCTURES, APPROACH PAVEMENTS, AND RETAINING WALLS SEE STRUCTURAL PLANS.
 - PAVEMENT RESURFACING SHALL CONSIST OF POLYMERIZED HMA SURFACE COURSE, MIX "F", N90, 2", LEVELING BINDER (MACHINE METHOD), N70, 3/4".
 - PAVEMENT WIDENING SHALL CONSIST OF THE FOLLOWING: HOT-MIX ASPHALT PAVEMENT (FULL-DEPTH), 10 1/4" AGGREGATE SUBGRADE IMPROVEMENT, 12" GEOTECHNICAL FABRIC FOR GROUND STABILIZATION
 - ALL WORK REQUIRED FOR THE CONSTRUCTION OF COMBINATION CONCRETE CURB AND GUTTER TRANSITION SHALL BE PAID FOR AS COMBINATION CONCRETE CURB AND GUTTER, TYPE B-6.24.
 - FOR PROPOSED GRADING INFORMATION SEE PAVEMENT JOINTING AND ELEVATION PLANS.



FILE NAME =	USER NAME = #USER#	DESIGNED <i>PJO</i>	REVISED -	STATE OF ILLINOIS DEPARTMENT OF TRANSPORTATION	PLAN AND PROFILE - ILLINOIS ROUTE 59 (NB)	F.A.P. RTE.	SECTION	COUNTY	TOTAL SHEETS	SHEET NO.	
*FILEL#		DRAWN <i>KES</i>	REVISED -			338	(112 & 113) WRS-5	DUPAGE	963	247	
		CHECKED <i>JCM</i>	REVISED -			CONTRACT NO. 60I31					
		DATE <i>10/15/2012</i>	REVISED -			ILLINOIS FED. AID PROJECT					