

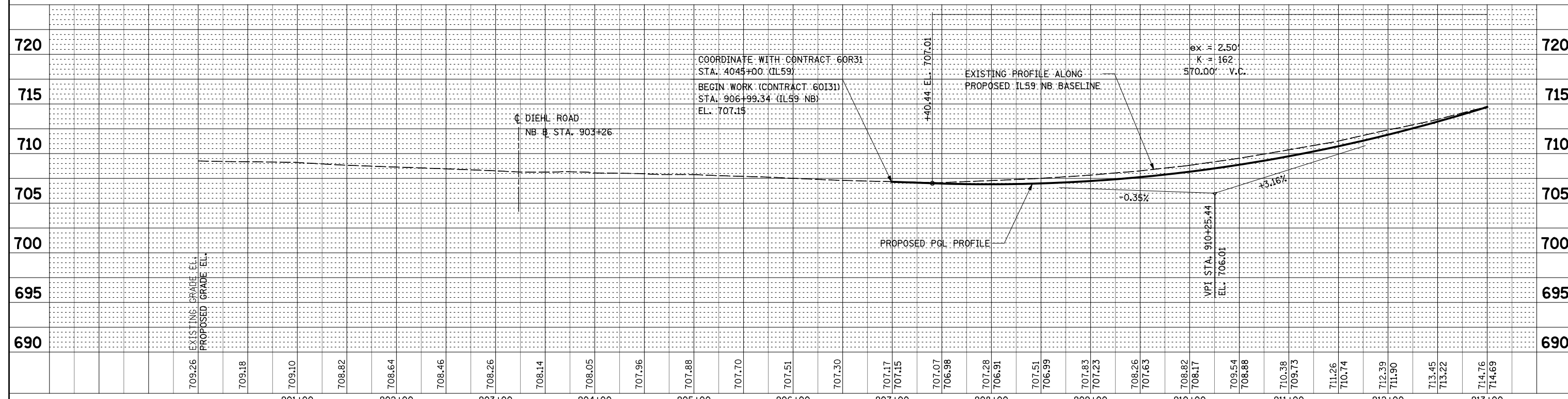
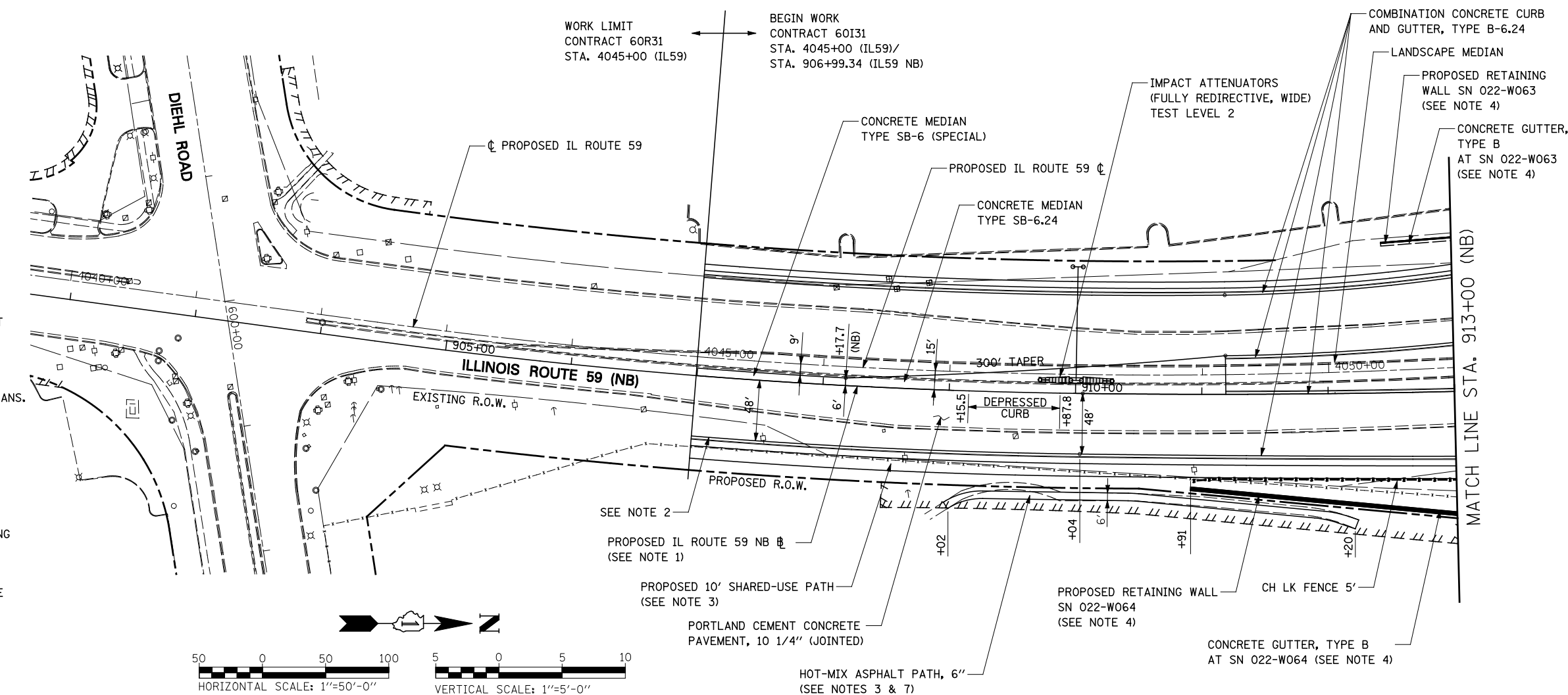
INFORMATION SHOWN IS FOR NORTHBOUND PROFILE SEE SOUTHBOUND PROFILE SHEETS FOR MORE INFORMATION

NOTES

- FOR PROPOSED ILLINOIS ROUTE 59 AND I-88 RAMP BASELINE INFORMATION SEE ALIGNMENT, BENCHMARKS, AND TIES - ILLINOIS ROUTE 59 NORTHBOUND & SOUTHBOUND BASELINE AND I-88 RAMP DATA SHEETS.
- FOR PROPOSED ILLINOIS ROUTE 59 AND I-88 RAMP PAVEMENT GEOMETRY INFORMATION SEE GEOMETRIC LAYOUT - ILLINOIS ROUTE 59 AND GEOMETRIC LAYOUT - I-88 RAMP SHEETS.
- FOR PROPOSED SIDEWALK, SHARED-USE PATH, AND FENCE INFORMATION SEE SIDEWALK / SHARED-USE PATH/ FENCE PLANS.
- FOR PROPOSED BRIDGE STRUCTURES, APPROACH PAVEMENTS, AND RETAINING WALLS SEE STRUCTURAL PLANS.
- FOR COMBINATION CURB AND GUTTER INFORMATION SEE GEOMETRIC LAYOUT - ILLINOIS ROUTE 59 CHANNELIZATION ISLAND DETAILS SHEET.
- FOR PROPOSED GRADING INFORMATION SEE PAVEMENT JOINTING AND ELEVATION PLANS.
- FOR HMA PATH MATERIAL REQUIREMENTS SEE HMA MIXTURE CHART ON THE GENERAL NOTES SHEET. HMA PATH SHALL BE PAID FOR AT THE CONTRACT UNIT PRICE FOR HMA SURFACE COURSE, MIX "D", N50 (IL-9.5mm) AND HMA BINDER COURSE, IL-19.0, N50.

PLAN	SURVEYED	CHECKED	DATE
	PLOTTED	ALIGNMENT	
	GRADES	FILE NAME	
	STRUCTURE		

PROFILE	SURVEYED	CHECKED	DATE
	PLOTTED	GRADES	
	NOTE BOOK	STRUCTURE	
		NOTATION	



FILE NAME =	USER NAME = #USER#	DESIGNED <i>PJO</i>	REVISED -	STATE OF ILLINOIS DEPARTMENT OF TRANSPORTATION	PLAN AND PROFILE - ILLINOIS ROUTE 59 (NB)	F.A.P. RTE.	SECTION	COUNTY	TOTAL SHEETS	SHEET NO.	
FILE#		DRAWN <i>KES</i>	REVISED -			338	(112 & 113) WRS-5	DUPAGE	963	245	
		CHECKED <i>JCM</i>	REVISED -			CONTRACT NO. 60I31					
		DATE <i>10/15/2012</i>	REVISED -			SCALE: AS SHOWN SHEET NO. 1 OF 18 SHEETS STA. 906+99.34 TO STA. 913+00					