

CONST-SPECIAL-4230
(BLACK 5" HWY D LETTERS ON REFLECTIVE ORANGE)
SEE NOTE 2

CONST-SPECIAL-3630
(BLACK 5" HWY D LETTERS ON REFLECTIVE ORANGE)
SEE NOTE 2

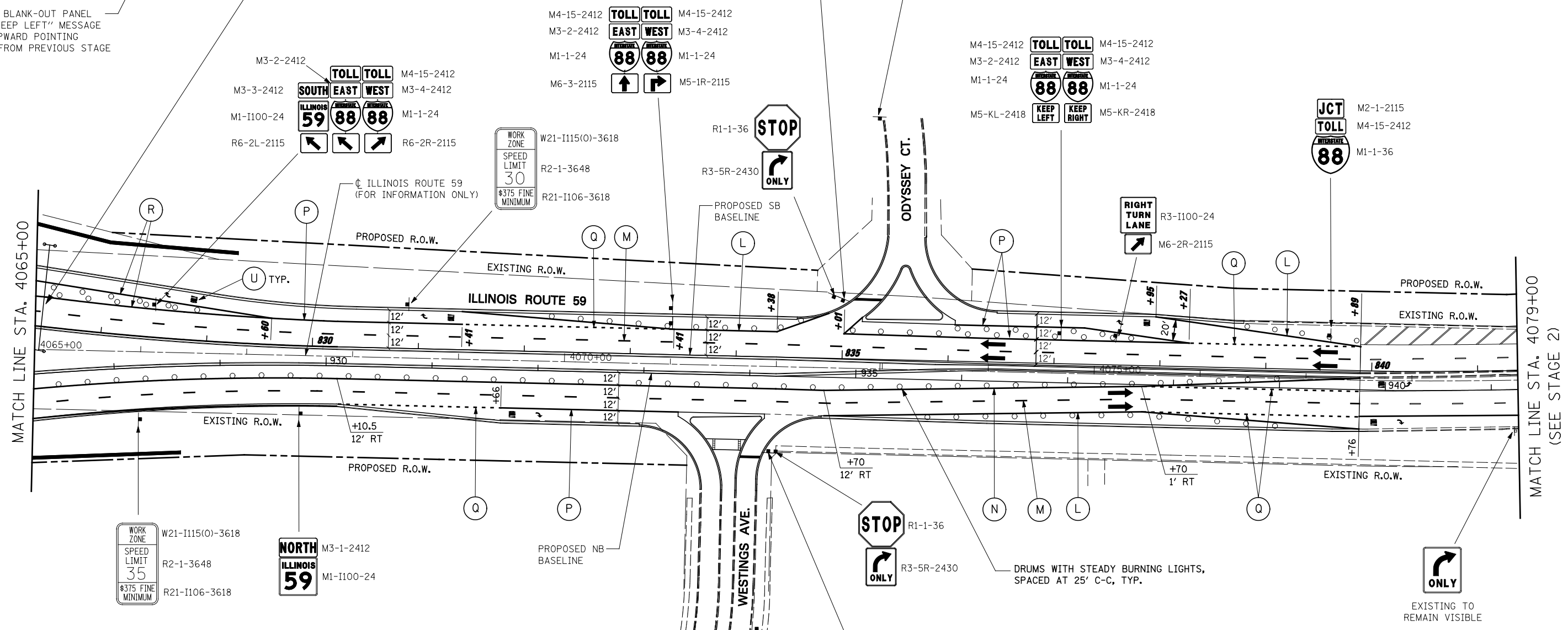
ALIGNMENT LEGEND

+39.5 INDICATES STATION MEASURED FROM SB BASELINE

+39.5 INDICATES STATION MEASURED FROM NB BASELINE

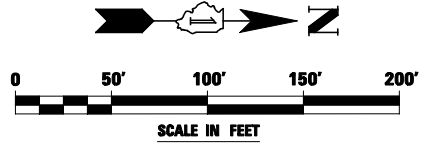
REMOVE BLANK-OUT PANEL WITH "KEEP LEFT" MESSAGE OVER UPWARD POINTING ARROW FROM PREVIOUS STAGE

PERMANENT SIGN STRUCTURE INSTALLED IN A PREVIOUS STAGE



NOTES

- ALL BLANK OUT PANELS AND TEMPORARY SIGN PANELS MOUNTED ON OVERHEAD SIGNS SHALL HAVE AN ORANGE BACKGROUND.
- CONST-SPECIAL SIGNS TO BE MEASURED AND PAID FOR SEPARATELY UNDER TEMPORARY INFORMATION SIGNING. THESE SIGNS WILL NOT BE REMEASURED FOR PAYMENT IN SUBSEQUENT STAGES. THE RELOCATION OF THESE SIGNS SHALL BE INCLUDED IN THE COST FOR TEMPORARY INFORMATION SIGNING.



FILE NAME =	USER NAME = #USER*	DESIGNED PJO	REVISED -	STATE OF ILLINOIS DEPARTMENT OF TRANSPORTATION	MAINTENANCE OF TRAFFIC - STAGE 4B ILLINOIS ROUTE 59	F.A.P. RTE.	SECTION	COUNTY	TOTAL SHEETS	SHEET NO.	
#FILE#		DRAWN KES	REVISED -			338	(112 & 113) WRS-5	DUPAGE	963	233	
PLOT SCALE = #SCALE#		CHECKED JCM	REVISED -			CONTRACT NO. 60I31					
PLOT DATE = #DATE#		DATE 10/15/2012	REVISED -			ILLINOIS FED. AID PROJECT					
					SCALE:	SHEET NO. 117 OF 118 SHEETS		STA. 4065+00 TO STA. 4079+00			