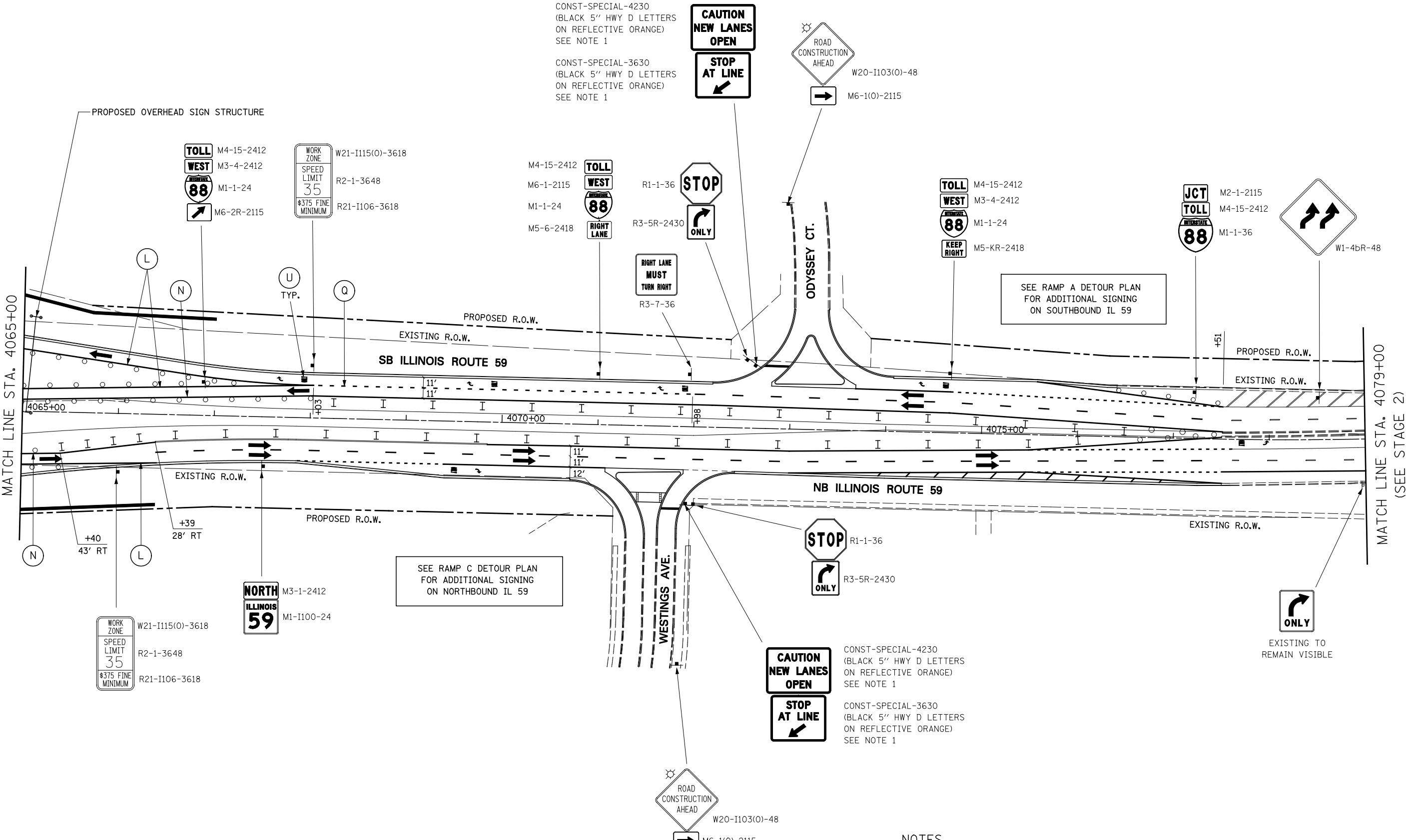


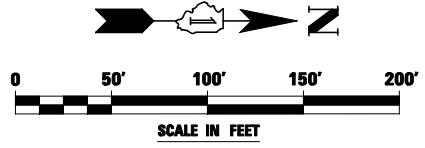
CONST-SPECIAL-4230  
(BLACK 5" HWY D LETTERS  
ON REFLECTIVE ORANGE)  
SEE NOTE 1

CONST-SPECIAL-3630  
(BLACK 5" HWY D LETTERS  
ON REFLECTIVE ORANGE)  
SEE NOTE 1



**NOTES**

1. CONST-SPECIAL SIGNS TO BE MEASURED AND PAID FOR SEPARATELY UNDER TEMPORARY INFORMATION SIGNING. THESE SIGNS WILL NOT BE REMEASURED FOR PAYMENT IN SUBSEQUENT STAGES. THE RELOCATION OF THESE SIGNS SHALL BE INCLUDED IN THE COST FOR TEMPORARY INFORMATION SIGNING.



FILE NAME = *FILEL*	USER NAME = *USER*	DESIGNED <i>PJO</i>	REVISED -
		DRAWN <i>KES</i>	REVISED -
		CHECKED <i>JCM</i>	REVISED -
		DATE <i>10/15/2012</i>	REVISED -

**STATE OF ILLINOIS  
DEPARTMENT OF TRANSPORTATION**

**MAINTENANCE OF TRAFFIC - STAGE 3C  
ILLINOIS ROUTE 59**

SCALE: SHEET NO. 95 OF 118 SHEETS STA. 4065+00 TO STA. 4079+00

F.A.P. RTE.	SECTION	COUNTY	TOTAL SHEETS	SHEET NO.
338	(112 & 113) WRS-5	DUPAGE	963	211
CONTRACT NO. 60I31				
ILLINOIS FED. AID PROJECT				