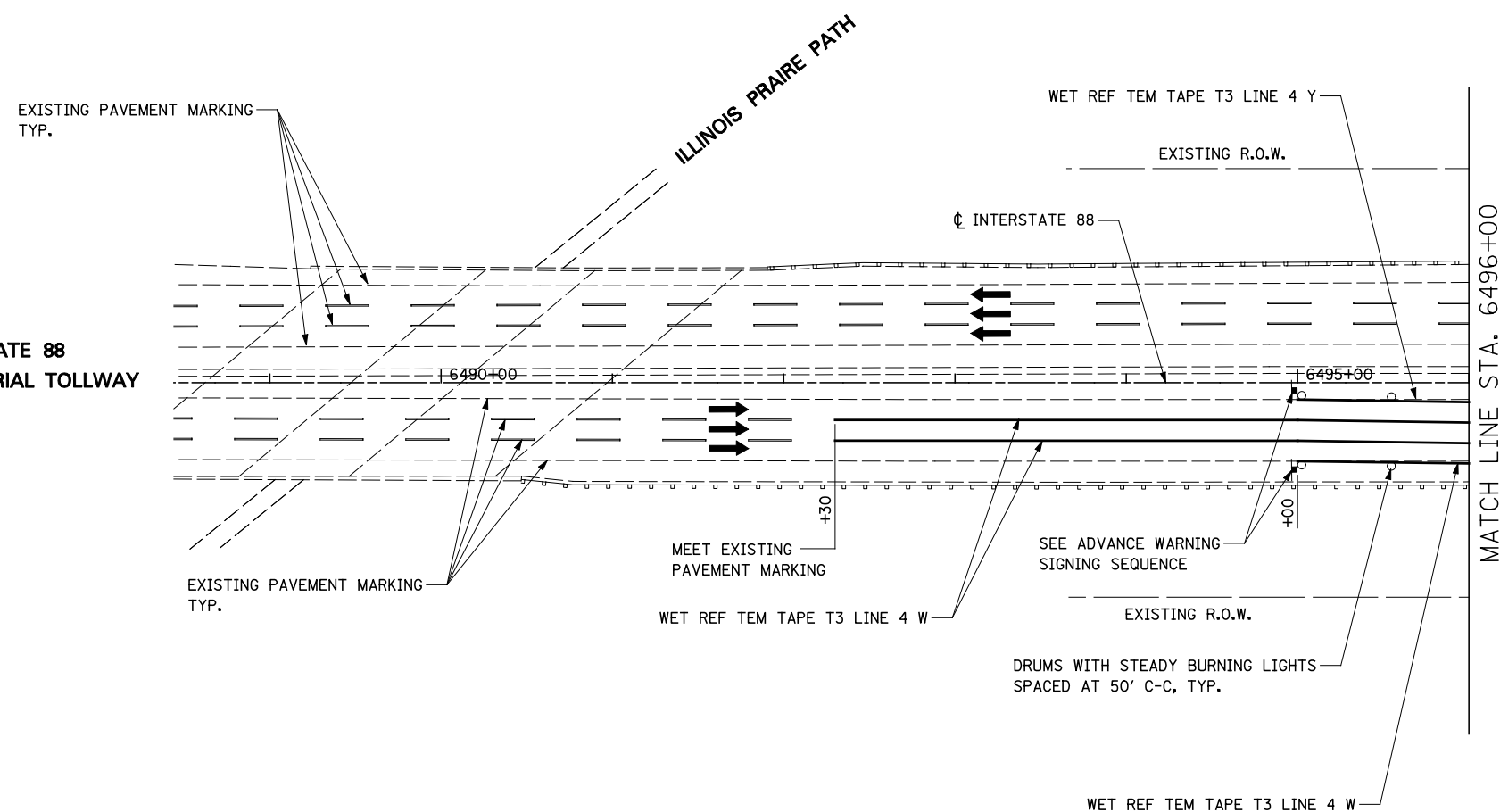


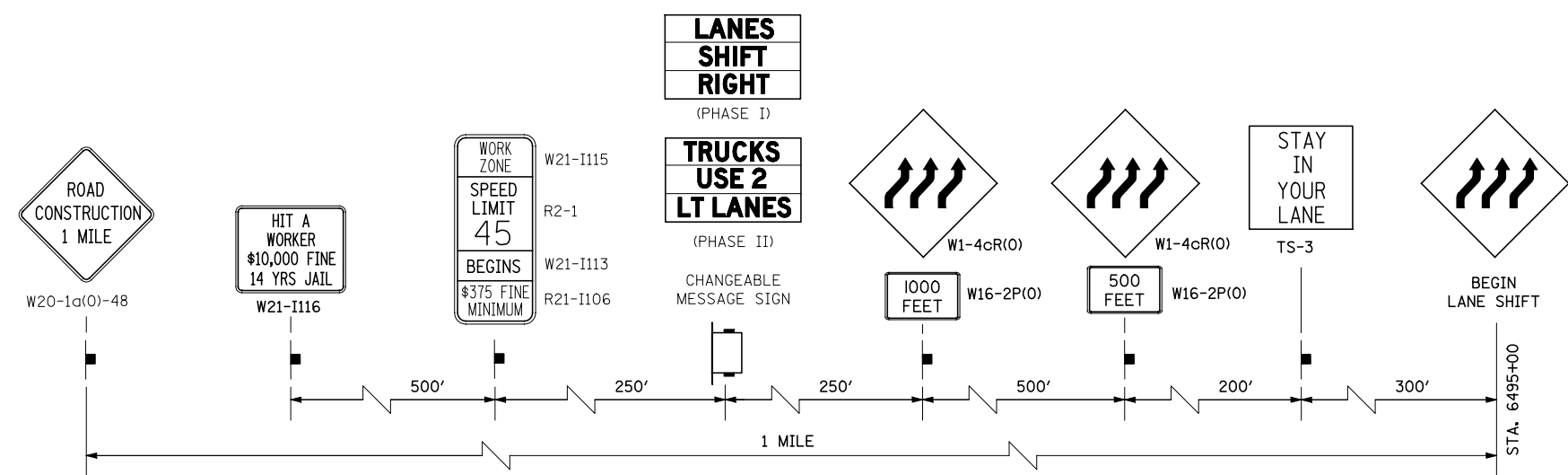
**INTERSTATE 88
REAGAN MEMORIAL TOLLWAY**



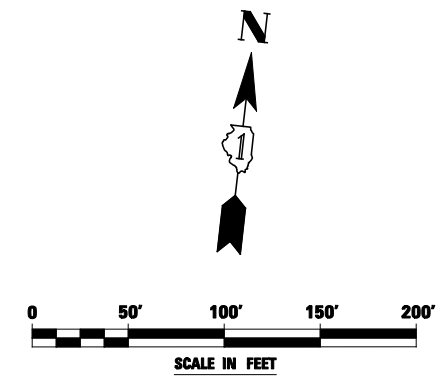
TOLLWAY TRAFFIC CONTROL

TRAFFIC CONTROL ON INTERSTATE 88 AND AT RAMP TERMINALS SHALL BE IN ACCORDANCE WITH THE FOLLOWING ILLINOIS TOLLWAY STANDARDS:

- E1 CONSTRUCTION SIGNS
- E2 LANE CLOSURE DETAILS
- E3 SHOULDER CLOSURE DETAILS
- E4 MAINTENANCE OF TRAFFIC REVERSE CURVE
- E5 TEMPORARY GORE DETAILS



**ADVANCE WARNING SIGN SEQUENCE DETAIL
EASTBOUND**



| | | | | | | | | | | | |
|------------------------|--------------------|------------------------|-----------|---|--|----------------------------|-------------------|------------------------------|--------------|-----------|--|
| FILE NAME = #FILEL# | USER NAME = #USER# | DESIGNED <i>PJO</i> | REVISED - | STATE OF ILLINOIS DEPARTMENT OF TRANSPORTATION | MAINTENANCE OF TRAFFIC – STAGE 3A INTERSTATE 88 | F.A.P. RTE. | SECTION | COUNTY | TOTAL SHEETS | SHEET NO. | |
| | | DRAWN <i>KES</i> | REVISED - | | | 338 | (112 & 113) WRS-5 | DUPAGE | 963 | 183 | |
| | | CHECKED <i>JCM</i> | REVISED - | | | CONTRACT NO. 60I31 | | | | | |
| | | DATE <i>10/15/2012</i> | REVISED - | | | ILLINOIS FED. AID PROJECT | | | | | |
| | | | | | SCALE: | SHEET NO. 67 OF 118 SHEETS | | STA. 6488+50 TO STA. 6496+00 | | | |