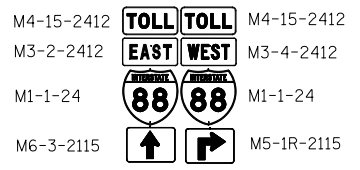
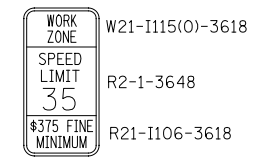
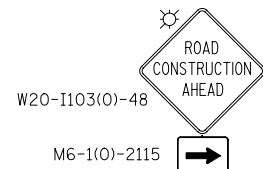
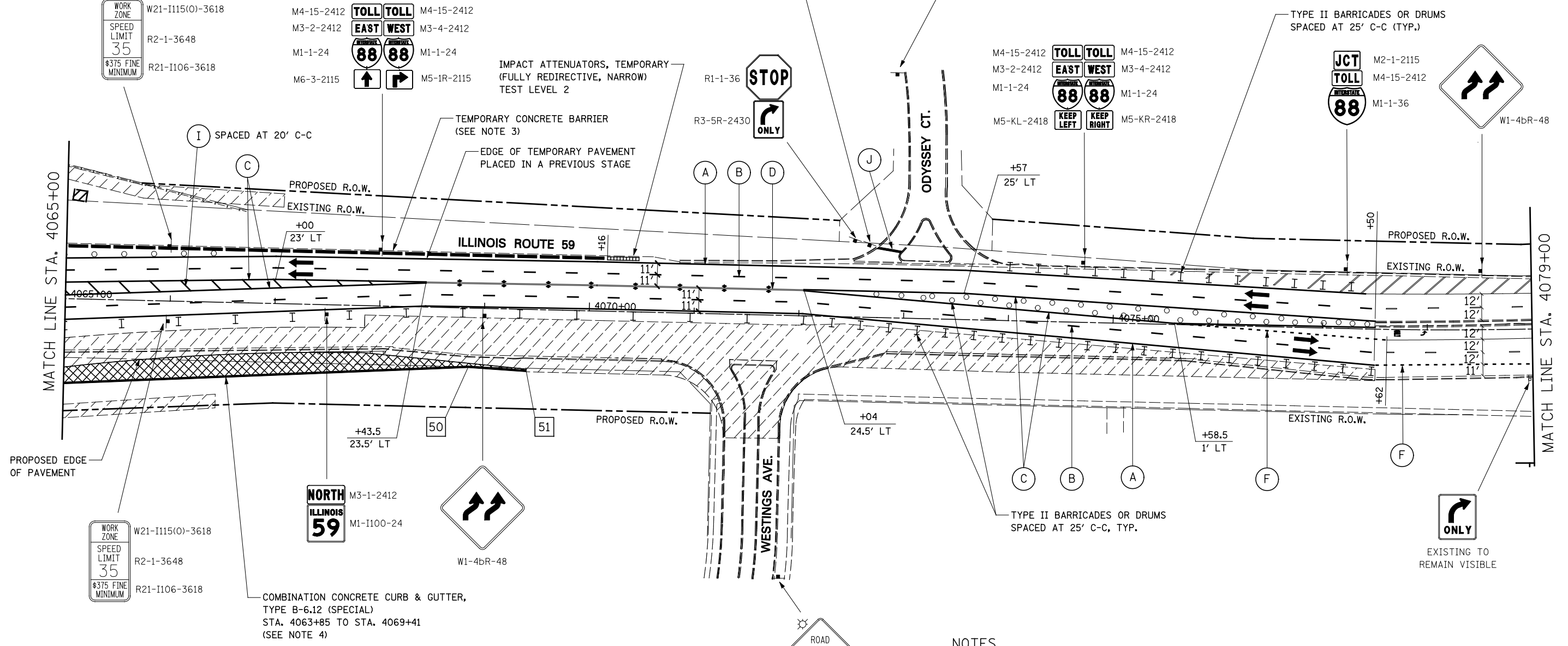
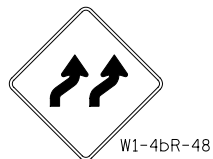
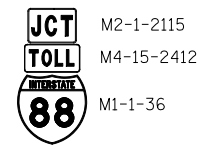
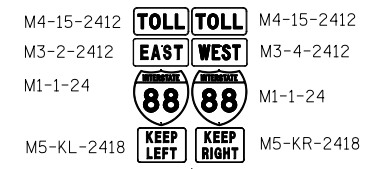
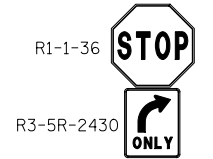


CONST-SPECIAL-4230
(BLACK 5" HWY D LETTERS
ON REFLECTIVE ORANGE)
SEE NOTE 2

CONST-SPECIAL-3630
(BLACK 5" HWY D LETTERS
ON REFLECTIVE ORANGE)
SEE NOTE 2



IMPACT ATTENUATORS, TEMPORARY
(FULLY REDIRECTIVE, NARROW)
TEST LEVEL 2



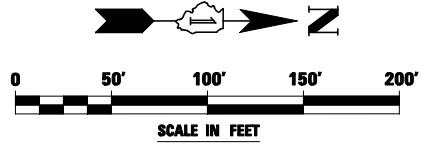
COMBINATION CONCRETE CURB & GUTTER,
TYPE B-6.12 (SPECIAL)
STA. 4063+85 TO STA. 4069+41
(SEE NOTE 4)

TEMPORARY PAVEMENT DATA

	STATION	OFFSET
50	4068+86	55' RT
51	4069+41	58' RT

NOTES

- SEE TEMPORARY PAVEMENT DETAIL ON MAINTENANCE OF TRAFFIC DETAILS SHEET.
- CONST-SPECIAL SIGNS TO BE MEASURED AND PAID FOR SEPARATELY UNDER TEMPORARY INFORMATION SIGNING. THESE SIGNS WILL NOT BE REMEASURED FOR PAYMENT IN SUBSEQUENT STAGES. THE RELOCATION OF THESE SIGNS SHALL BE INCLUDED IN THE COST FOR TEMPORARY INFORMATION SIGNING.
- TEMPORARY CONCRETE BARRIER SHALL BE CONTINUOUSLY PINNED TO THE PAVEMENT. SEE MOT TYPICAL SECTIONS AND GENERAL NOTES.
- AT THE LIMITS OF THE CURB AND GUTTER, HORIZONTAL AND VERTICAL TRANSITIONS SHALL BE INSTALLED IN ACCORDANCE WITH THE MAINTENANCE OF TRAFFIC DETAILS AND AS DIRECTED BY THE ENGINEER.



FILE NAME =	USER NAME = #USER#	DESIGNED PJO	REVISED -
#FILE#		DRAWN KES	REVISED -
	PLOT SCALE = #SCALE#	CHECKED JCM	REVISED -
	PLOT DATE = #DATE#	DATE 10/15/2012	REVISED -

STATE OF ILLINOIS
DEPARTMENT OF TRANSPORTATION

MAINTENANCE OF TRAFFIC - STAGE 1
ILLINOIS ROUTE 59

SCALE: SHEET NO. 10 OF 118 SHEETS STA. 4065+00 TO STA. 4079+00

F.A.P. RTE.	SECTION	COUNTY	TOTAL SHEETS	SHEET NO.
338	(112 & 113) WRS-5	DUPAGE	963	126
CONTRACT NO. 60131				

ILLINOIS FED. AID PROJECT