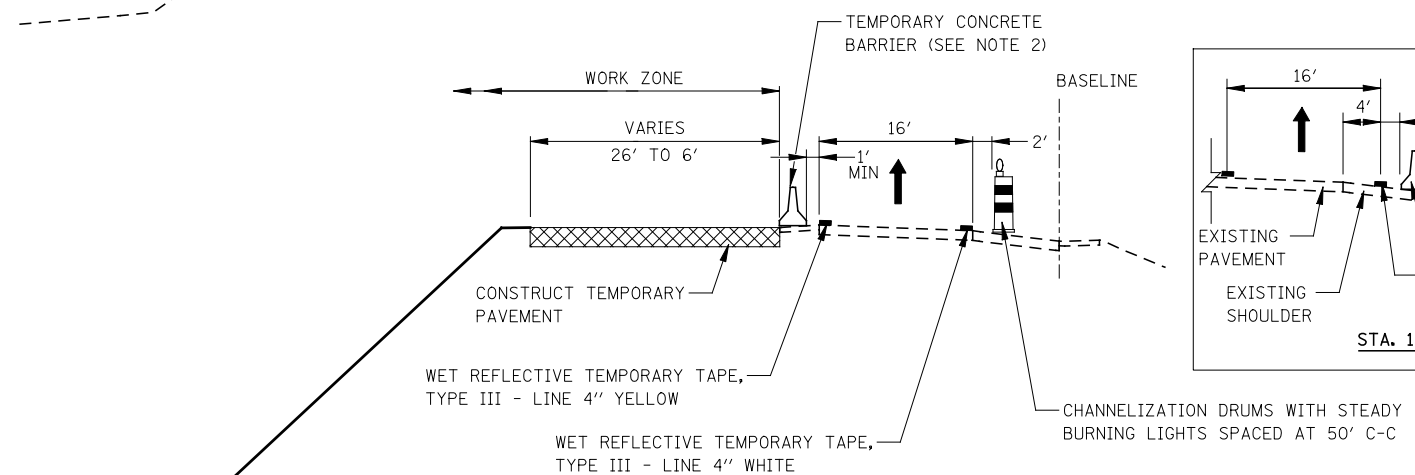
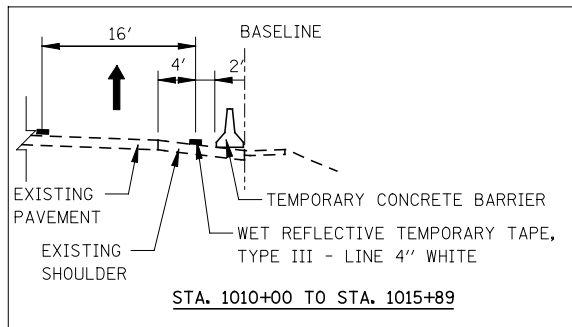


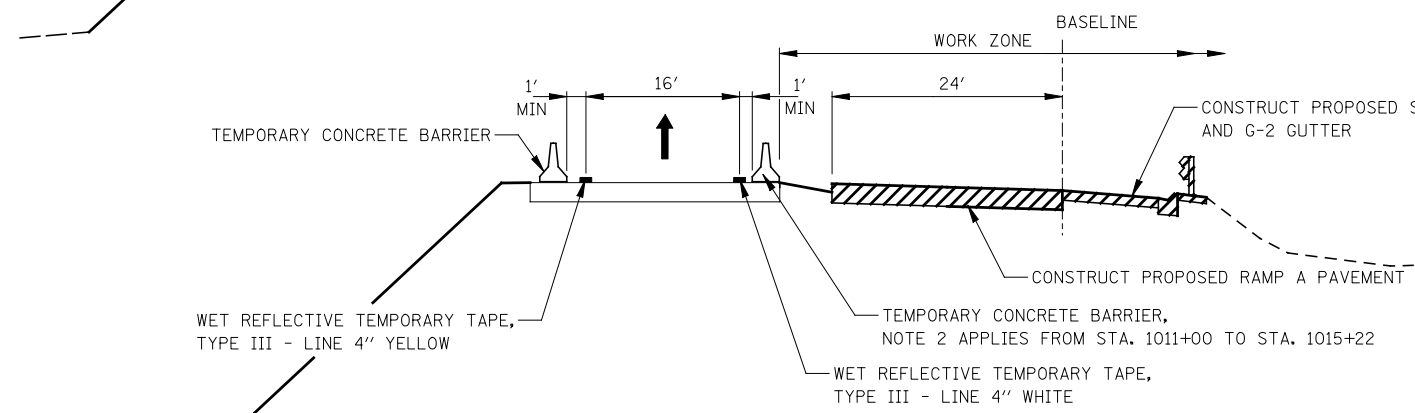
EXISTING CONDITIONS / PRESTAGE



STAGE 1



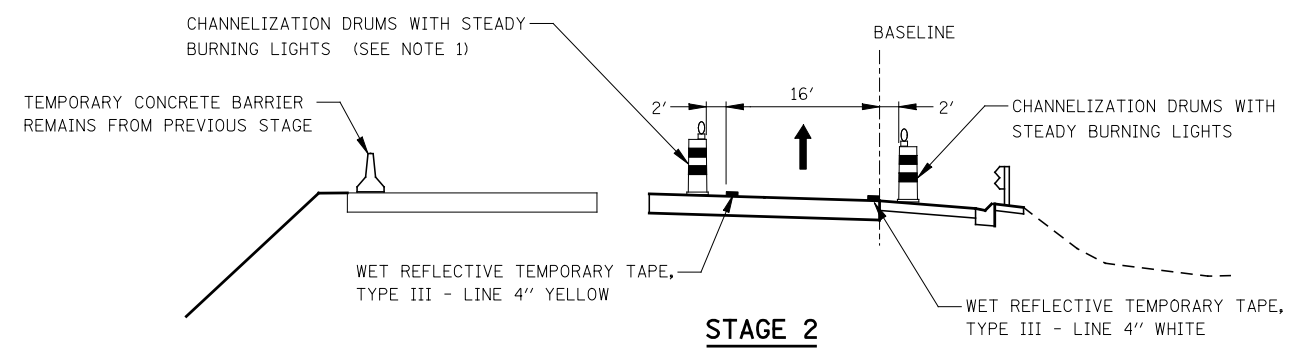
STA. 1010+00 TO STA. 1015+89



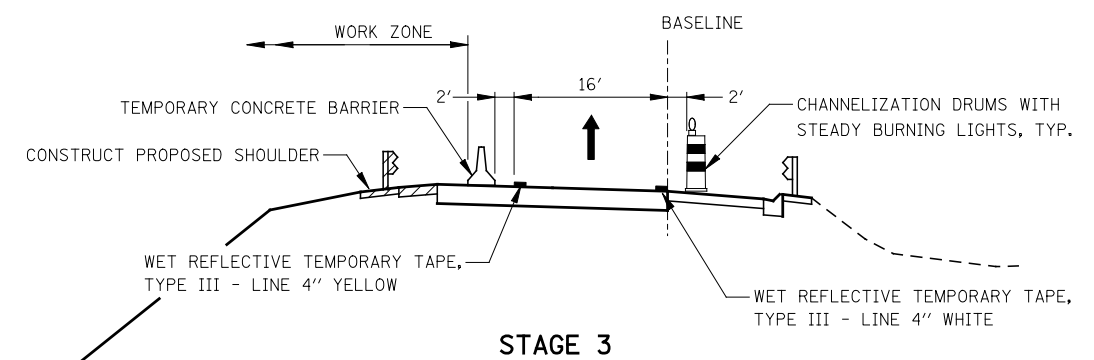
STAGE 1A & 1B

NOTES

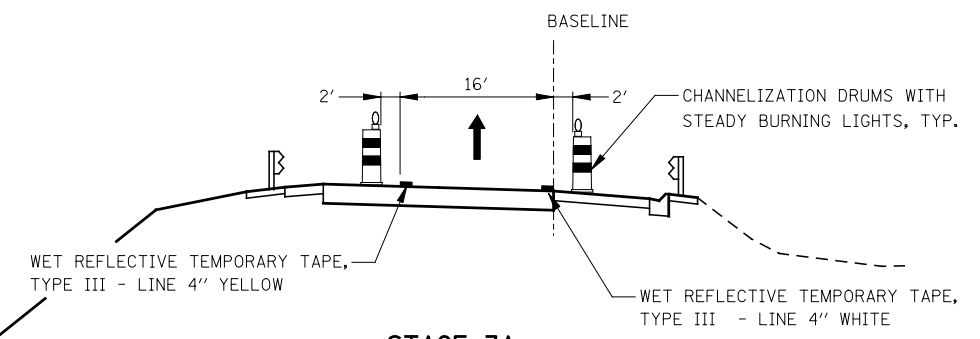
1. PAVEMENT DROP-OFF SHALL NOT EXCEED 24 INCHES BEHIND TYPE II BARRICADES OR CHANNELIZATION DRUMS. TEMPORARY GRADING, IF REQUIRED TO REDUCE DROP-OFF HEIGHT, DURING CONSTRUCTION SHALL BE CONSIDERED INCLUDED IN THE COST FOR TRAFFIC CONTROL AND PROTECTION, (SPECIAL).
2. TEMPORARY CONCRETE BARRIER SHALL BE CONTINUOUSLY PINNED TO THE PAVEMENT. SEE MAINTENANCE OF TRAFFIC GENERAL NOTES.



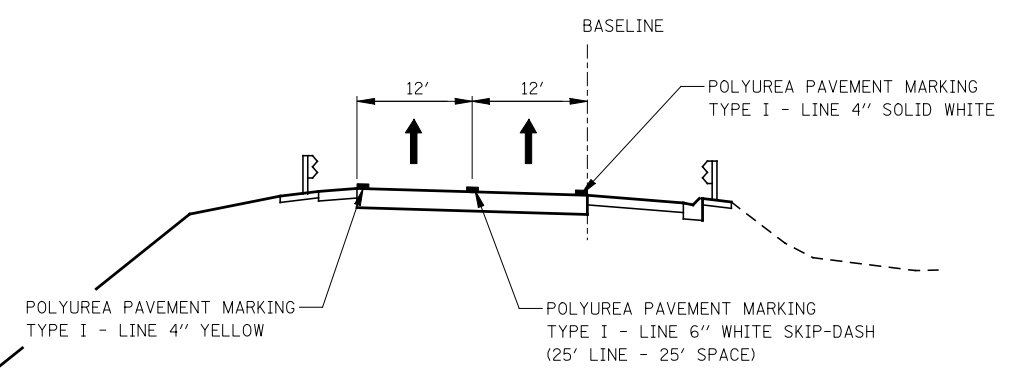
STAGE 2



STAGE 3



STAGE 3A



STAGE 3B, 3C, 4, 4A & 4B (PROPOSED CONFIGURATION)

FILE NAME =	USER NAME = #USER#	DESIGNED <i>PJO</i>	REVISED -
#FILE#		DRAWN <i>KES</i>	REVISED -
	PLOT SCALE = #SCALE#	CHECKED <i>JCM</i>	REVISED -
	PLOT DATE = #DATE#	DATE <i>10/15/2012</i>	REVISED -

**STATE OF ILLINOIS
DEPARTMENT OF TRANSPORTATION**

**MAINTENANCE OF TRAFFIC TYPICAL SECTIONS
RAMP A**

SCALE: SHEET NO. 13 OF 17 SHEETS STA. TO STA.

F.A.P. RTE.	SECTION	COUNTY	TOTAL SHEETS	SHEET NO.
338	(112 & 113) WRS-5	DUPAGE	963	111
CONTRACT NO. 60I31				
ILLINOIS FED. AID PROJECT				