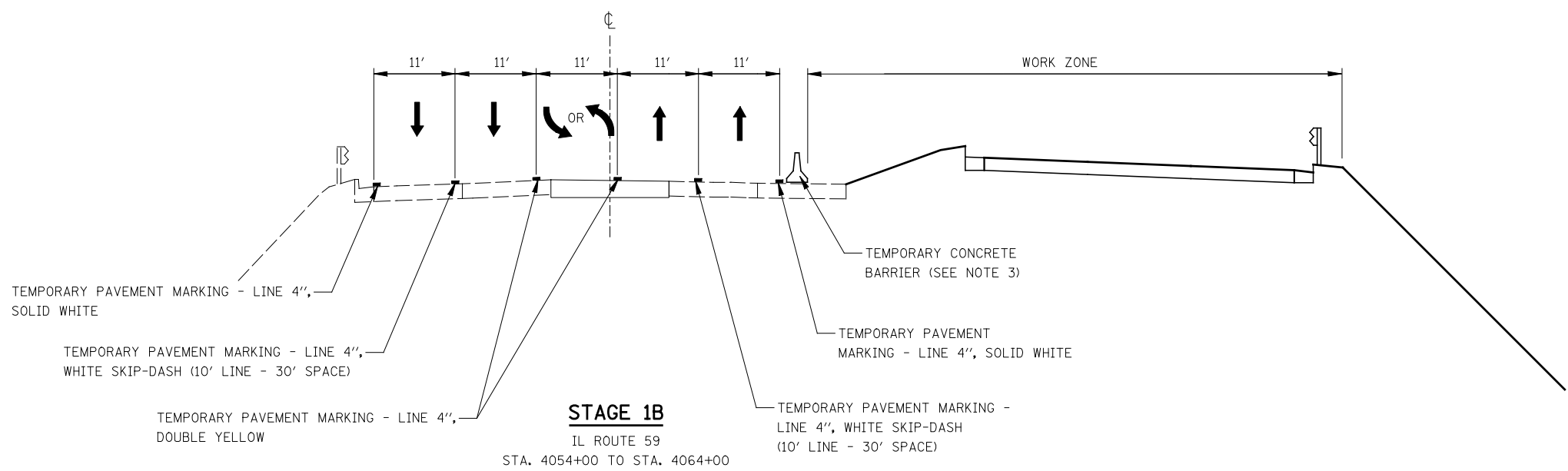
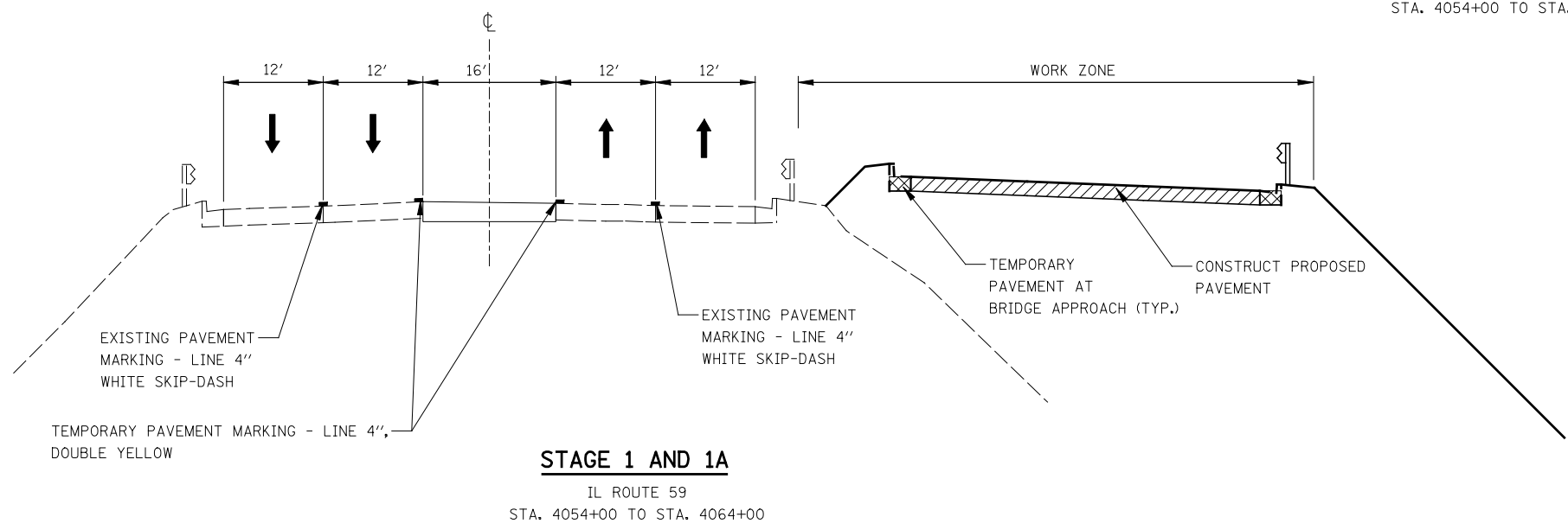


**NOTES**

1. THE LEFT THROUGH LANE TO BE CLOSED IN ACCORDANCE WITH IDOT STANDARD 701601 DURING CONSTRUCTION WITHIN THE EXISTING MEDIAN. THIS WORK MUST BE DONE DURING OFF-PEAK PERIODS AS DETERMINED BY THE ENGINEER.
2. MEDIAN REMOVAL AND REPLACEMENT WORK WILL BE A SHORT-TERM MOVING WORK ZONE OPERATION. THE CONTRACTOR IS REQUIRED TO PLACE TEMPORARY PAVEMENT IN ALL LOCATIONS WHERE THE RAISED MEDIAN IS REMOVED BY THE END OF THE WORK DAY.
3. TEMPORARY CONCRETE BARRIER SHALL BE CONTINUOUSLY PINNED TO THE PAVEMENT. SEE MAINTENANCE OF TRAFFIC GENERAL NOTES. FOR LOCATIONS ON THE BRIDGE DECK, SEE STRUCTURAL PLANS.



FILE NAME = *FILEL*	USER NAME = *USER*	DESIGNED <i>PJO</i>	REVISED -	<b>STATE OF ILLINOIS DEPARTMENT OF TRANSPORTATION</b>	<b>MAINTENANCE OF TRAFFIC TYPICAL SECTIONS ILLINOIS ROUTE 59</b>	F.A.P. RTE.	SECTION	COUNTY	TOTAL SHEETS	SHEET NO.	
		DRAWN <i>KES</i>	REVISED -			338	(112 & 113) WRS-5	DUPAGE	963	102	
		CHECKED <i>JCM</i>	REVISED -			CONTRACT NO. 60I31					
		DATE <i>10/15/2012</i>	REVISED -			SCALE:	SHEET NO. 4 OF 17 SHEETS	STA. 4054+00 TO STA. 4064+00	ILLINOIS FED. AID PROJECT		