

PROPOSED CURVE NB-1
 PI STA. = 907+24.94
 Δ = 7° 00' 14" (LT)
 D = 1° 14' 44"
 R = 4,599.55'
 T = 281.48'
 L = 562.26'
 E = 8.60'
 P.C. STA. = 904+43.46
 P.T. STA. = 910+05.72
 SE = NORMAL CROWN

PROPOSED CURVE SB-1
 PI STA. = 807+82.94
 Δ = 8° 24' 55" (LT)
 D = 1° 15' 14"
 R = 4,569.55'
 T = 336.18'
 L = 671.14'
 E = 12.35'
 P.C. STA. = 804+46.76
 P.T. STA. = 811+17.91
 SE = NORMAL CROWN

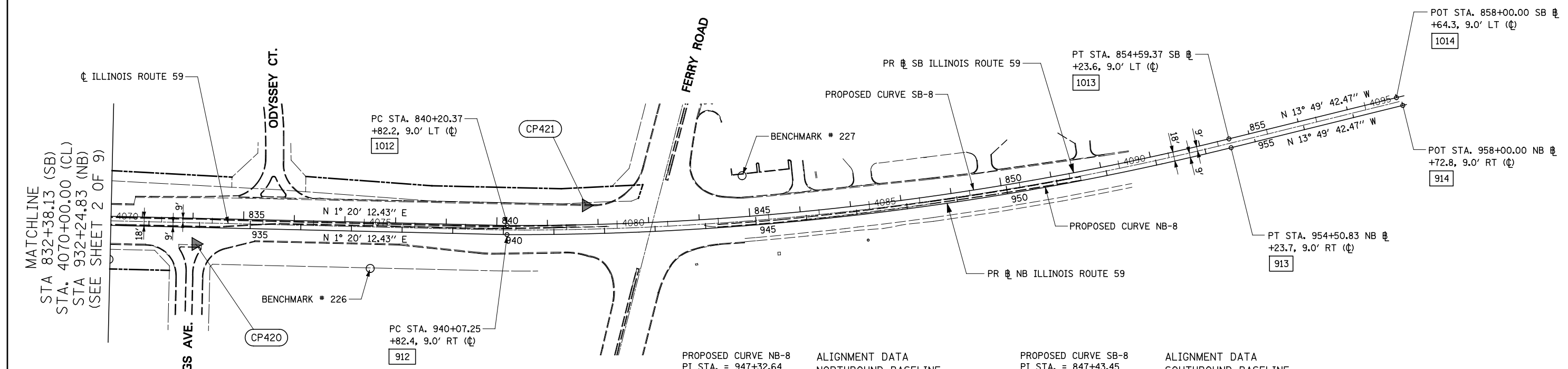
ALIGNMENT DATA NORTHBOUND BASELINE

900	N 869175.00 E 19340.98
901	N 869603.21 E 19461.89

ALIGNMENT DATA SOUTHBOUND BASELINE

1000	N 869183.15 E 19312.11
1001	N 869611.36 E 19433.02

FOR ROUTE 59 CENTERLINE INFORMATION SEE ALIGNMENT, BENCHMARKS, AND TIES ILLINOIS ROUTE 59 CENTERLINE DATA SHEETS



PROPOSED CURVE NB-8
 PI STA. = 947+32.64
 Δ = 13° 58' 29" (LT)
 D = 0° 58' 05"
 R = 5,918.58'
 T = 725.39'
 L = 1,443.58'
 E = 44.29'
 P.C. STA. = 940+07.25
 P.T. STA. = 954+50.83
 SE = NORMAL CROWN

ALIGNMENT DATA NORTHBOUND BASELINE

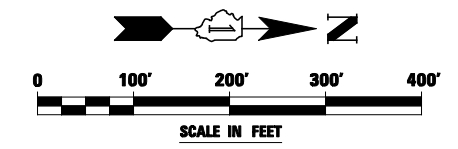
912	N 873128.05 E 19683.29
913	N 874557.80 E 19511.76
914	N 874896.85 E 19428.30

PROPOSED CURVE SB-8
 PI STA. = 847+43.45
 Δ = 13° 58' 23" (LT)
 D = 0° 58' 16"
 R = 5,900.58'
 T = 723.09'
 L = 1,439.00'
 E = 44.14'
 P.C. STA. = 840+20.37
 P.T. STA. = 854+59.37
 SE = NORMAL CROWN

ALIGNMENT DATA SOUTHBOUND BASELINE

1012	N 873128.28 E 19665.29
1013	N 874553.50 E 19494.28
1014	N 874884.26 E 19412.86

- NOTE:
1. PLAT OF HIGHWAYS STATION EQUATION NOT APPLICABLE TO RAMP A. ALIGNMENT WAS CHANGED TO ACCOMMODATE DDI DESIGN.
 2. PLAT OF HIGHWAYS STATION EQUATION NOT APPLICABLE TO RAMP B, C, D, & FERRY RD.



FILE NAME =	USER NAME = *USER*	DESIGNED <i>PJO</i>	REVISED -
*FILEL#		DRAWN <i>KES</i>	REVISED -
	PLOT SCALE = *SCALE*	CHECKED <i>JCM</i>	REVISED -
	PLOT DATE = *DATE*	DATE <i>10/15/2012</i>	REVISED -

STATE OF ILLINOIS DEPARTMENT OF TRANSPORTATION

ALIGNMENT, BENCHMARKS, AND TIES ILLINOIS ROUTE 59 NORTHBOUND & SOUTHBOUND BASELINE DATA

SCALE: SHEET NO. 3 OF 9 SHEETS STA. 4036+00 TO STA. 4095+00

F.A.P. RTE.	SECTION	COUNTY	TOTAL SHEETS	SHEET NO.
338	(112 & 113) WRS-5	DUPAGE	963	79
CONTRACT NO. 60I31				
ILLINOIS FED. AID PROJECT				