

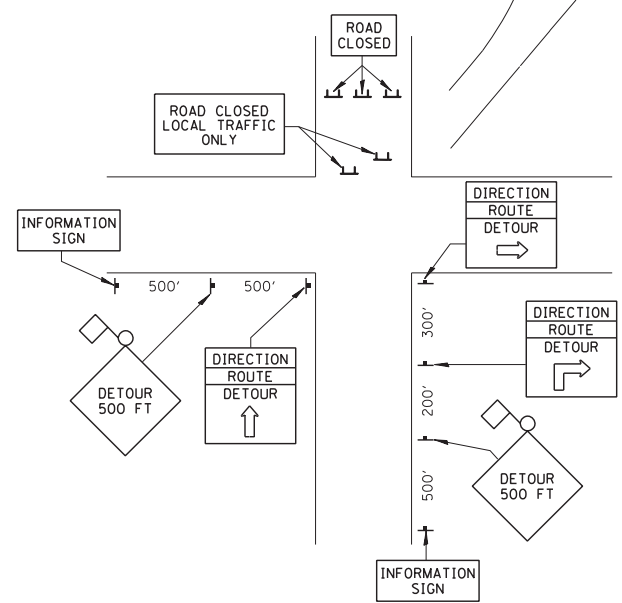
RAMP CLOSURE NOTES

- 1) THE CONTRACTOR SHALL FURNISH, ERECT, MAINTAIN AND REMOVE ALL APPLICABLE SIGNS AND BARRICADES, AS DETERMINED BY THE ENGINEER, AT EXIT RAMP CLOSURES IN ACCORDANCE WITH THE REQUIREMENTS OF IDOT DISTRICT ONE DETAIL TC-08. THIS WORK WILL BE INCLUDED IN THE UNIT PRICE BID FOR TRAFFIC CONTROL AND PROTECTION (EXPRESSWAYS).
- 2) RAMP CLOSURE ADVANCE WARNING SIGN OVERLAY "RAMP CLOSED" SHALL BE PLACED ON EXISTING GROUND MOUNT AND TRUSS MOUNTED ADVANCE GUIDE SIGNS ALONG I-190 EASTBOUND FOR MANNHEIM ROAD.
- 3) ONE CHANGEABLE MESSAGE SIGN (CMS) SHALL BE FURNISHED AND PLACED AT LOCATION AS DIRECTED BY THE ENGINEER TO ADVISE MOTORISTS OF THE RAMP CLOSURE. THE CMS SHALL BE IN OPERATION FROM TWO WEEKS PRIOR TO THE RAMP CLOSURE UNTIL THE RAMP IS REOPENED TO TRAFFIC.

DETOUR SIGNING NOTES

NB MANNHEIM ROAD TO BALMORAL AVENUE EXIT RAMP

- THE DETOUR ROUTE SHALL BE EASTBOUND LAWRENCE AVENUE TO NORTHBOUND DESPLAINES RIVER ROAD TO BALMORAL AVENUE.
- THE RAMP SHALL BE CLOSED DURING STAGE 1.



TYPICAL SIGN INSTALLATION

LEGEND

- SIGNALIZED INTERSECTION
- 48" x 48" CONSTRUCTION WARNING SIGN WITH AMBER FLASHING LIGHT AND ORANGE WARNING FLAG. NUMBER DENOTES TYPE.
- M4-9 SERIES DETOUR SIGN WITH ROAD NAME AND CARDINAL DIRECTION PLATE. NUMBER DENOTES TYPE.
- OTHER DETOUR SIGNS. NUMBER DENOTES TYPE.
- TYPE III BARRICADE WITH AMBER FLASHING LIGHTS.
- DETOUR ROUTE

SCHEDULE OF SIGNS

SIGN NO.	SIGN TYPE	QUANTITY
1	W20-2 (O) 48	1
2	M4-9 (O) 30 21	3
3	M4-9 R (O) 30 21	1
4	M4-9 R (O) 30 21	1

SIGN NO.	SIGN TYPE	QUANTITY
5	M4-9 L (O) 30 21	2
6	M4-9 L (O) 30 21	2
7	M4-8a (O) 24 18	1
8	BALMORAL AVENUE SPECIAL NO. 1	11
9	M3-3 (O) 24 12	0
10	M3-1 (O) 24 12	9
11	W20-2 (O) 48	0
12	BALMORAL AVENUE EXIT RAMP CLOSED R-11-4-6030	1

SIGN NO.	SIGN TYPE	QUANTITY
13	W20-2 (O) 48	0
14	W20-2 (O) 48	1
15	R-11-2-4830	1

DTR-05

I:\18-2012\1322019\BAJZEK\18-2012\1322019\18-2012-1322019-02\COMMON\SET\TEMP\18-2012\1322019-SHT-DETOUR-CBD.DGN

FILE NAME = *FILEL*	USER NAME = *USER*	DESIGNED - BRH	REVISED -	STATE OF ILLINOIS DEPARTMENT OF TRANSPORTATION	DETOUR PLAN NB MANNHEIM ROAD TO BALMORAL AVENUE			F.A. RTE.	SECTION	COUNTY	TOTAL SHEETS	SHEET NO.	
					SCALE: 1"=50'				0105	WRS&HB	COOK	605	162
					SHEET NO. OF SHEETS STA. TO STA.				CONTRACT NO. 60G37				
									ILLINOIS FED. AID PROJECT				

