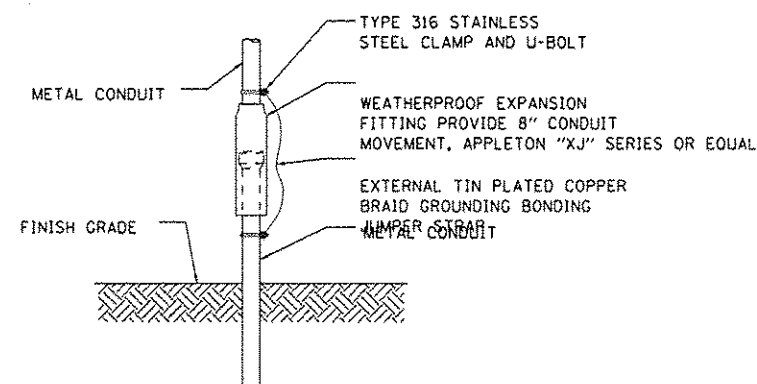


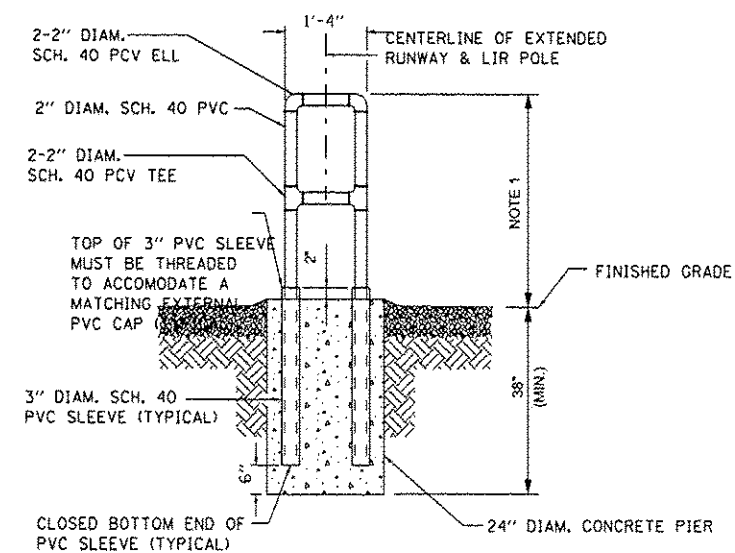
L.I.R. I-9150  
ALUMINUM SWIVEL JOINT

**NOTES:**

USED WHEN THE LIR MAST IS LOWERED AND THE CROSSBAR MUST BE ROTATED FOR SERVICE. THIS DESIGN ALLOWS THE ROTATION SURFACES TO BE METAL TO METAL VERSUS FIBERGLASS TO FIBERGLASS. BUILT-IN LOCATING PIN FOR POSITIVE RE-ALIGNMENT AFTER SERVICING. FIELD BONDING AND SLOTTING REQUIRED.



EXPANSION FITTING FOR SOIL MOVEMENT



**NOTES:**

1. ADJUST MAINTENANCE STAND HEIGHT SO LIGHTS ARE APPROXIMATELY 40" ABOVE FINISHED GRADE WHEN LOWERED INTO MAINTENANCE POSITION.
2. STAND TO BE LOCATED AT A DISTANCE EQUAL TO 0.75 x THE HEIGHT OF THE POLE FROM THE VERTICAL POSITION OF THE RVR POLE IN THE DIRECTION OF THE TILT DIRECTION OF THE RVR LIR TUBE.
3. WHEN THE STAND IS NOT IN USE, EXTERNAL PVC CAPS MUST BE INSTALLED ON THE THREADED TOPS TO PREVENT WATER INTRUSION INTO THE SLEEVES.

REMOVABLE LIR POLE  
MAINTENANCE STAND

**HNTB**

|                        |                |            |
|------------------------|----------------|------------|
| USER NAME: mkostr      | DESIGNED: SJM  | REVISED: - |
| PLOT SCALE: 2:1        | DRAWN: SJM     | REVISED: - |
| PLOT DATE: 26-DEC-2012 | CHECKED: SPG   | REVISED: - |
|                        | DATE: 12/28/12 | ADDENDUM 1 |

STATE OF ILLINOIS  
DEPARTMENT OF TRANSPORTATION

NAVAIDS  
LIR STRUCTURE ASSEMBLY DETAILS  
FOR TOWER TYPE MG-20

SCALE: N.T.S. SHEET NO. 16 OF 16 SHEETS STA. N/A TO STA. N/A

| F.A.P.<br>RTE.            | SECTION     | COUNTY | TOTAL<br>SHEETS | SHEET<br>NO. |
|---------------------------|-------------|--------|-----------------|--------------|
| 330                       | 0105 WRS&HB | COOK   | 605             | 605BN        |
| CONTRACT NO. 60637        |             |        |                 |              |
| ILLINOIS FED. AID PROJECT |             |        |                 |              |

ADDED SHEET  
GLD-120-2