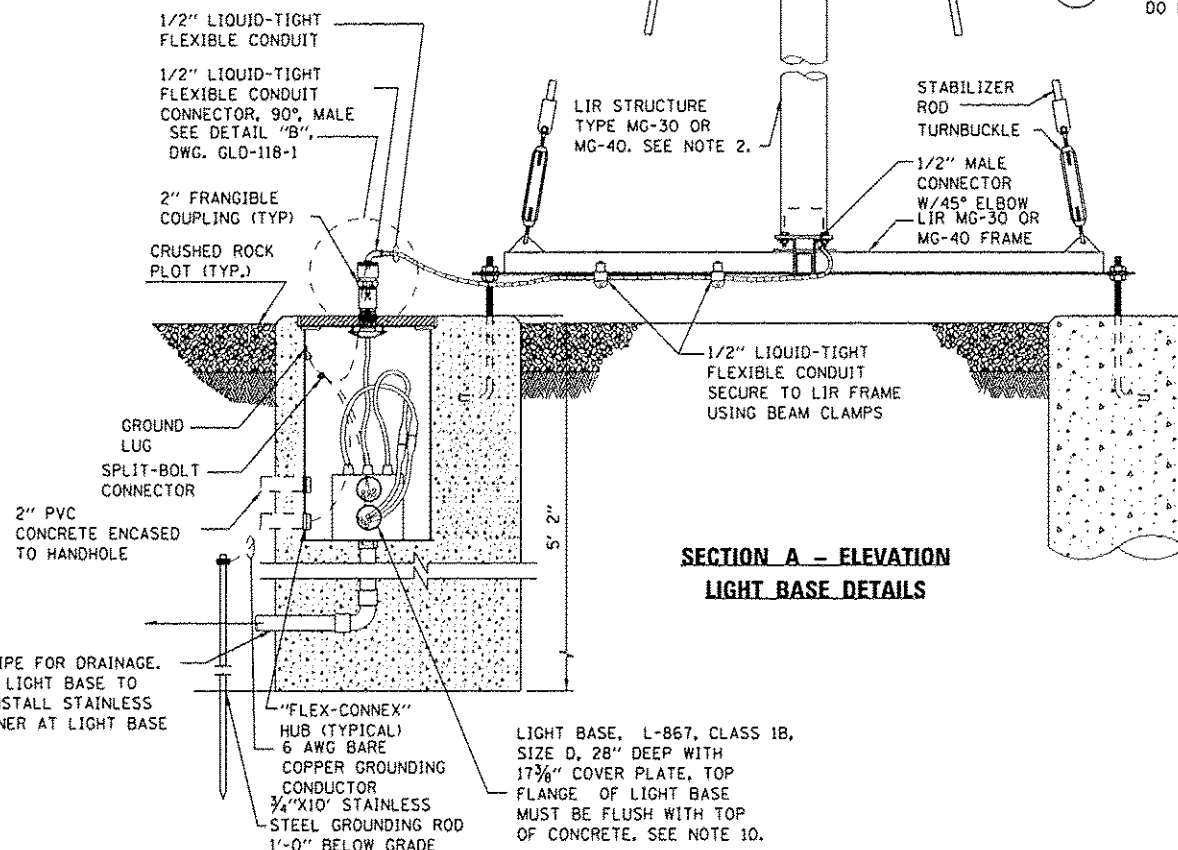
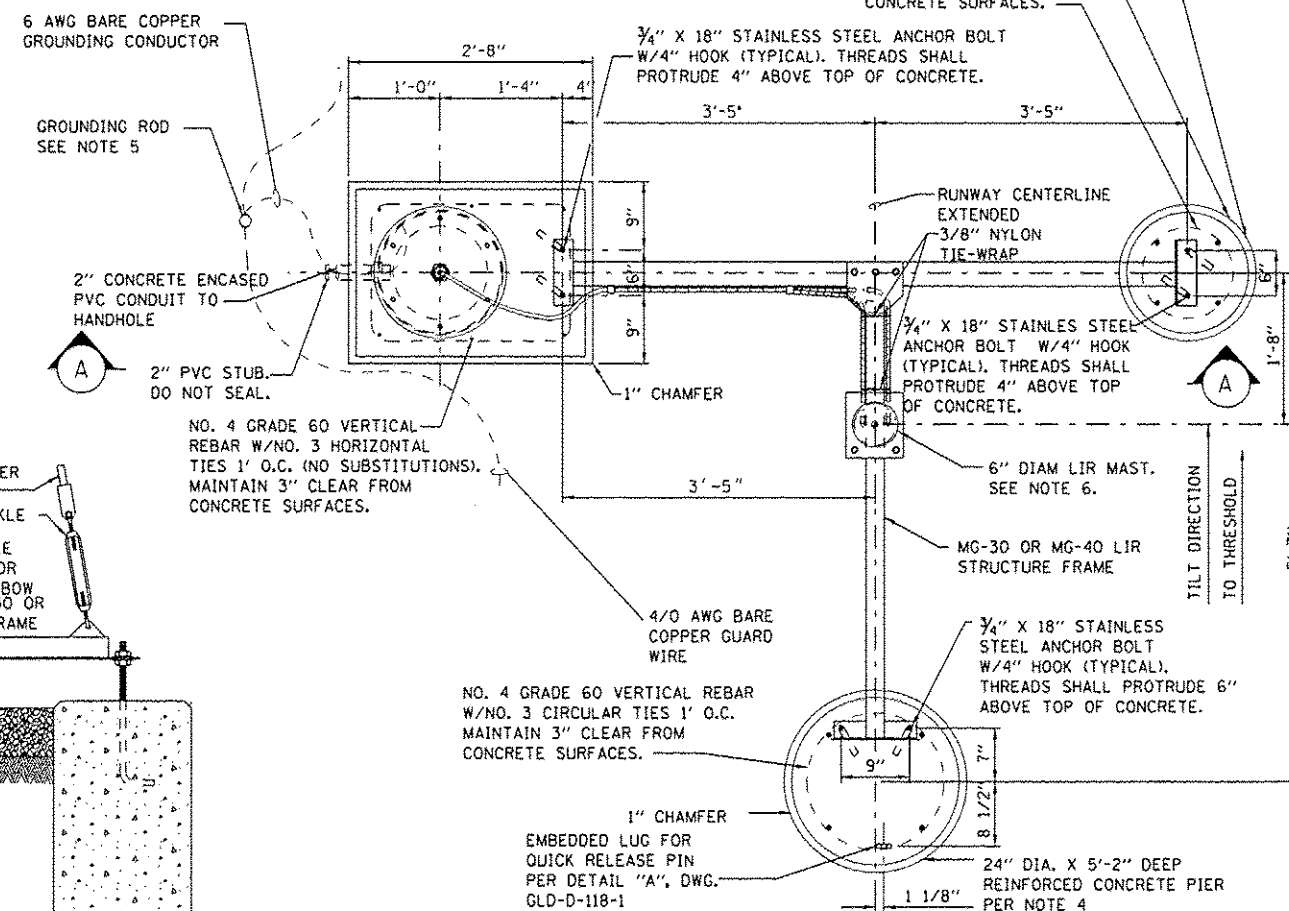


# NOTES:

- SEE DWG. GLD-01-1 FOR LAMP CENTERLINE AND FOUNDATION TOP ELEVATIONS.
- LIR STRUCTURE SHALL PIVOT TOWARD THE RUNWAY THRESHOLD. SEE NOTE 1, DWG. GLD-119-1 FOR LIR TUBE CUTTING LENGTH CALCULATION AND STRUCTURE ASSEMBLY DETAILS.
- SEE SPECIFICATION P-157 FOR EXCAVATION AND BACKFILL REQUIREMENTS. EXCAVATION SHALL BE SHORED OR SHAPED PER OSHA REQUIREMENTS.
- SEE SPECIFICATION P-610 FOR CONCRETE FORM WORK, REINFORCEMENT, MATERIAL, PLACEMENT, AND CURING SPECIFICATIONS. TOP TWO FEET OF CONCRETE PIER SHALL BE FORMED IN A FIBER FORM. FIBER FORM SHALL BE REMOVED TO 6" BELOW GRADE AFTER CURING FOR TWO DAYS.
- ALL CONNECTIONS TO GROUNDING RODS SHALL BE MADE USING EXOTHERMIC WELDS PER SPECIFICATIONS.
- FOUNDATION SHALL BE CONSTRUCTED SUCH THAT LIR MAST IS CENTERED AT THE RUNWAY STATION AS SHOWN ON LIGHT BAR AND LAMP SCHEDULE.
- SEE DETAIL "1", DWG. EA-011 FOR MALS 5-LIGHT BAR WIRING.
- SECTIONS AND DETAILS SHOWN ARE TYPICAL. SEE PLAN DRAWINGS TO DETERMINE SPECIFIC STATION REQUIREMENTS AS TO NUMBER OF CONDUITS AND LOCATION OF CONDUIT ENTRANCES INTO BASE.
- RIGID STEEL COUPLINGS SHALL BE INSTALLED PLUMB. THE TOP OF THE COUPLING SHALL PROTRUDE 1/4" ABOVE THE TOP OF THE CONCRETE FOUNDATION. THE FRANGIBLE COUPLING SHALL BE LOCKED AGAINST TURNING USING A LOCKING RING.
- CONCRETE FOUNDATION ANCHOR RODS AND HARDWARE MUST BE STAINLESS STEEL.
- ANTI-SEIZE COMPOUND MUST BE USED ON ALL THREADED CONNECTIONS, WITH THE EXCEPTION OF CERAMIC METALLIC, FLUOROPOLYMER COATED SAE GRADE 2 BOLTS.
- ALL ALSF LIGHT BAR/TOWER FOUNDATIONS SHALL BE CAST-IN PLACE.
- THE REQUIRED MINIMUM BEARING CAPACITY ON SUBGRADE BENEATH THE FOUNDATION SHALL BE 3.0 KSF. THE CONTRACTOR OC MUST VERIFY BEARING BENEATH FOUNDATION TO A DEPTH OF 3' MIN. OR DEPTH AS REQUIRED BY IDOT AND THE CDA COMMISSIONER.



SECTION A - ELEVATION  
LIGHT BASE DETAILS



DETAIL 1 - PLAN  
FOUNDATION LAYOUT FOR  
STEADY-BURNING MG-30/40 LIGHT BAR W/OUT FLASHER

**HNTB**

USER NAME: mhawr	DESIGNED: SJM	REVISED: -
PLOT SCALE: 2x1	DRAWN: SJM	REVISED: -
PLOT DATE: 26-DEC-2012	CHECKED: SPG	REVISED: -
	DATE: 12/28/12 ADDENDUM 1	

STATE OF ILLINOIS  
DEPARTMENT OF TRANSPORTATION

NAVAIDS  
MALSR - DETAILS FOR MG-30 OR MG-40 TOWER LIGHT  
BARS W/OUT FLASHER, PIVOT TOWARD THRESHOLD

SCALE: N.T.S. SHEET NO. 10 OF 16 SHEETS STA. N/A TO STA. N/A

F.A.P. RTE. 330	SECTION 0105 WRS&HB	COUNTY COOK	TOTAL SHEETS 605	SHEET NO. 605BH
CONTRACT NO. 60C37				ILLINOIS FED. AID PROJECT

ADDED SHEET  
GLD-15-1