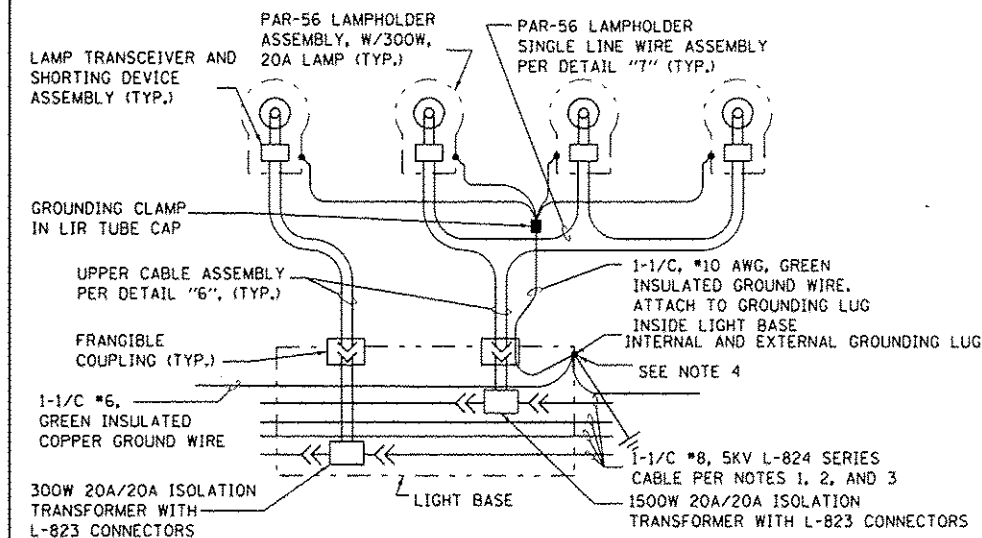
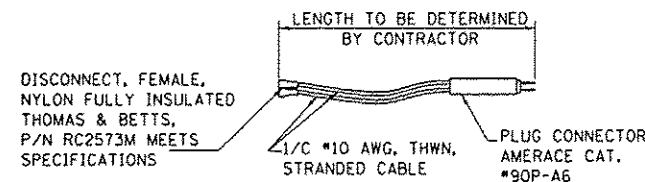


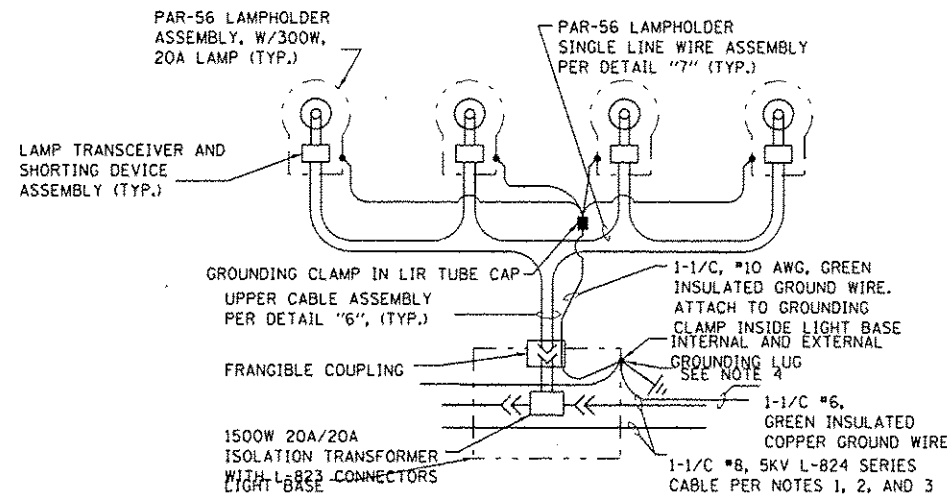
DETAIL 1
3-LIGHT BAR MOUNTED ON LIR STRUCTURE RAMPED NOSE



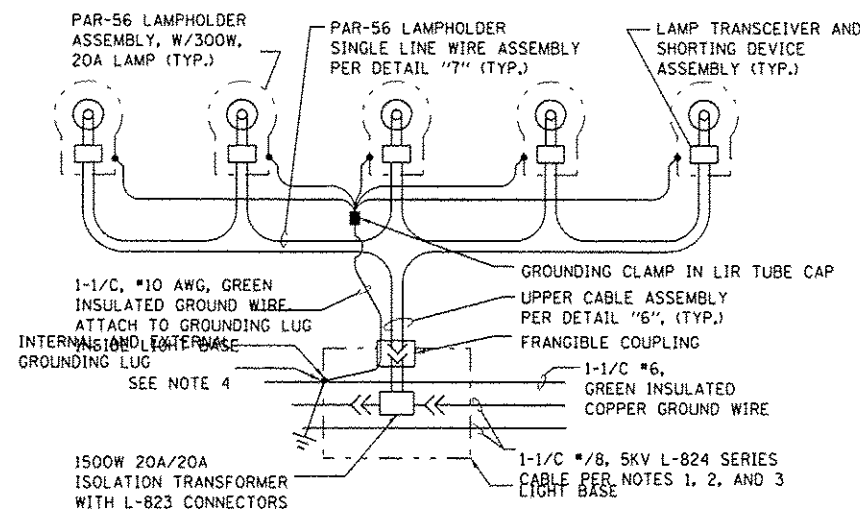
DETAIL 3
OUTBOARD 4-LIGHT BAR MOUNTED ON LIR STRUCTURE AT STATION 10+30



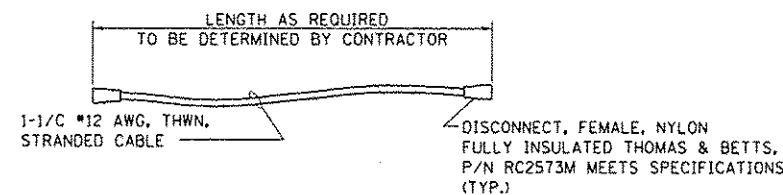
DETAIL 6
UPPER CABLE ASSEMBLY



DETAIL 2
4-LIGHT BAR MOUNTED ON LIR STRUCTURE



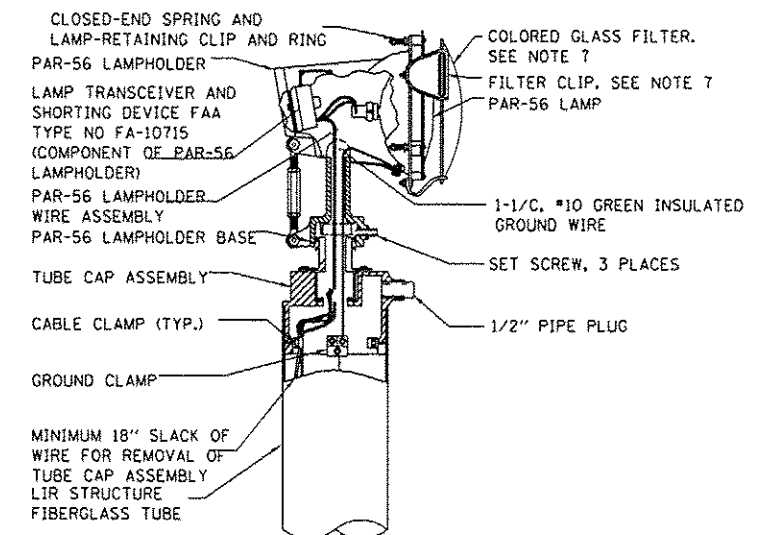
DETAIL 4
5 LIGHT BAR MOUNTED ON LIR STRUCTURE



DETAIL 7
TYPICAL PAR-56 LAMPHOLDER SINGLE-LINE WIRE ASSEMBLY

NOTES:

1. ALL CABLE CONNECTIONS WITHIN A LIGHT BASE (EXCEPT PLUG AND RECEPTACLE INSIDE FRANGIBLE COUPLING), SHALL BE SEALED PER SPECIFICATIONS WITH HEAT SHRINK TUBING FROM CABLE TO CABLE, FROM CABLE TO TRANSFORMER LEAD, OR FROM TRANSFORMER LEAD TO TRANSFORMER LEAD.
2. EACH CURRENT-CARRYING CABLE MAKING A CONNECTION IN THE LIGHT BASE SHALL HAVE A MINIMUM 4' SLACK LOOP COILED NEATLY INSIDE THE LIGHT BASE. (SLACK LOOP NOT REQUIRED FOR CABLES PASSING THROUGH LIGHT BASE WITHOUT CONNECTION).
3. EACH TRANSFORMER-TO TRANSFORMER SERIES CABLE SHALL HAVE A PLUG CONNECTOR ON ONE END, AND A RECEPTACLE CONNECTOR ON THE OTHER END, AMERACE CAT. NO. 54-D4-D4.
4. #4/0 AWG BARE COPPER GUARD WIRE IS NOT TO BE CONNECTED TO EXTERNAL GROUND LUG ON EACH BASE BUT MUST BE CONNECTED TO THE GROUND ROD INSTALLED AT EACH BASE. (NOT SHOWN FOR CLARITY).
5. ALL THREADS ON BOLTS AND FRANGIBLE COUPLINGS SHALL BE COATED WITH ANTI-SEIZE COMPOUND, WITH THE EXCEPTION OF CERAMIC METALLIC, FLUOROPOLYMER COATED SAE GRADE 2 BOLTS.
6. NOT USED
7. EACH COLORED GLASS FILTER IS SECURED WITH THREE STAINLESS STEEL FILTER CLIPS. THE CONTRACTOR SHALL BEND THE FILTER CLIPS SUCH THAT THEY HOLD THE FILTER SNUGLY IN PLACE WHEN THEY ARE BOLTED. COLORED FILTERS ARE NOT REQUIRED FOR CENTERLINE BAR.
8. THE CONTRACTOR SHALL FURNISH AND INSTALL AN NBP PAR-56 LAMPHOLDER RING ON EACH PAR-56 LAMPHOLDER. THIS RING FITS OVER THE LAMP-RETAINING CLIPS, AND HOLDS THE LAMP POSITIVELY IN PLACE. THE RING COMES WITH AN ATTACHED CHAIN HAVING A SS BOLT AT THE FREE END. REPLACE THE LAMPHOLDER'S EXISTING STAINLESS STEEL GROUNDING BOLT WITH THE CHAIN'S BOLT, TO MAKE THE RING CAPTIVE.



DETAIL 5
TYPICAL PAR-56 LAMPHOLDER LIGHT INSTALLATION AND WIRE ROUTING

HNTB

USER NAME: mhavr	DESIGNED: SJM	REVISED: -
PLOT SCALE: x 200	DRAWN: SJM	REVISED: -
PLOT DATE: 26-DEC-2012	CHECKED: SPG	REVISED: -
	DATE: 12/28/12 ADDENDUM 1	

STATE OF ILLINOIS
DEPARTMENT OF TRANSPORTATION

NAVAIDS
ALS-2 TYPICAL WIRING DIAGRAMS
FOR LIGHT BARS ON LIR TOWERS

SCALE: N.T.S. SHEET NO. 4 OF 16 SHEETS STA. N/A TO STA. N/A

F.A.P. RTE. 330	SECTION 0105 WRS&HB	COUNTY COOK	TOTAL SHEETS 605	SHEET NO. 605BB
CONTRACT NO. 60637			ILLINOIS FED. AID PROJECT	

ADDED SHEET
GLD-07-1