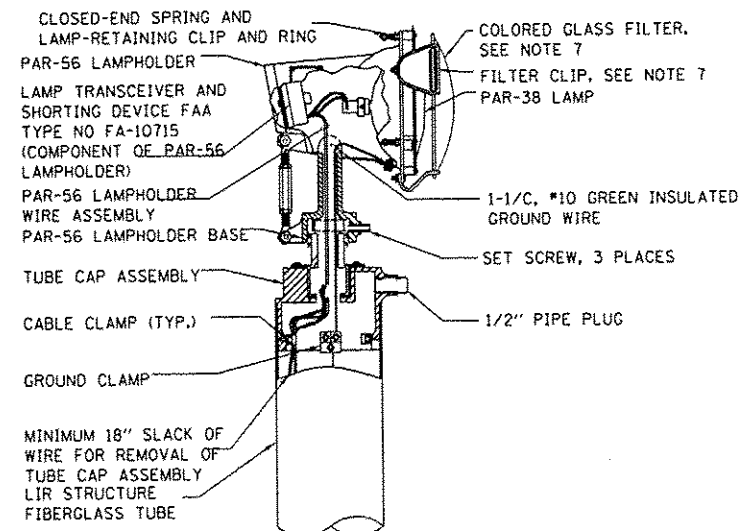


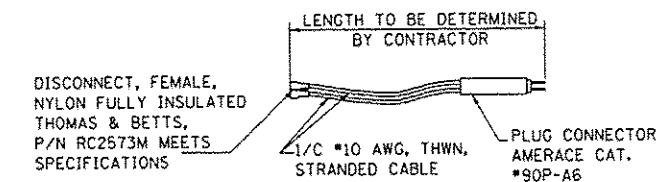
DETAIL 1
5 LIGHT BAR MOUNTED ON LIR STRUCTURE



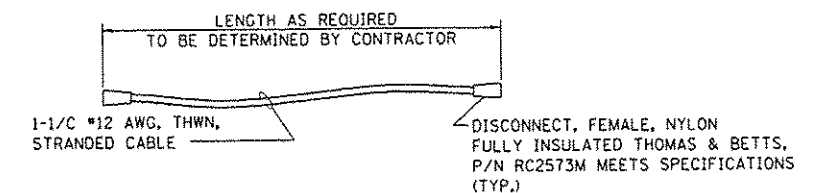
DETAIL 2
TYPICAL PAR-56 LAMPHOLDER LIGHT
INSTALLATION AND WIRE ROUTING

NOTES:

1. ALL CABLE CONNECTIONS WITHIN A LIGHT BASE (EXCEPT PLUG AND RECEPTACLE INSIDE FRANGIBLE COUPLING), SHALL BE SEALED PER SPECIFICATIONS WITH HEAT SHRINK TUBING FROM CABLE TO CABLE, FROM CABLE TO TRANSFORMER LEAD, OR FROM TRANSFORMER LEAD TO TRANSFORMER LEAD.
2. EACH CURRENT-CARRYING CABLE MAKING A CONNECTION IN THE LIGHT BASE SHALL HAVE A MINIMUM 4' SLACK LOOP COILED NEATLY INSIDE THE LIGHT BASE. (SLACK LOOP NOT REQUIRED FOR CABLES PASSING THROUGH LIGHT BASE WITHOUT CONNECTION).
3. EACH TRANSFORMER-TO-TRANSFORMER SERIES CABLE SHALL HAVE A PLUG CONNECTOR ON ONE END, AND A RECEPTACLE CONNECTOR ON THE OTHER END, AMERACE CAT. NO. 54-D4-D4.
4. #4/0 AWG BARE COPPER GUARD WIRE IS NOT TO BE CONNECTED TO EXTERNAL GROUND LUG ON EACH BASE BUT MUST BE CONNECTED TO THE GROUND ROD INSTALLED AT EACH BASE. (NOT SHOWN FOR CLARITY).
5. ALL THREADS ON BOLTS AND FRANGIBLE COUPLINGS SHALL BE COATED WITH ANTI-SEIZE COMPOUND, WITH THE EXCEPTION OF CERAMIC METALLIC, FLUOROPOLYMER COATED SAE GRADE 2 BOLTS.
6. NOT USED
7. EACH COLORED GLASS FILTER IS SECURED WITH THREE STAINLESS STEEL FILTER CLIPS. THE CONTRACTOR SHALL BEND THE FILTER CLIPS SUCH THAT THEY HOLD THE FILTER SNUGLY IN PLACE WHEN THEY ARE BOLTED. COLORED FILTERS ARE NOT REQUIRED FOR CENTERLINE BAR.
8. THE CONTRACTOR SHALL FURNISH AND INSTALL AN NBP PAR-56 LAMPHOLDER RING ON EACH PAR-56 LAMPHOLDER. THIS RING FITS OVER THE LAMP-RETAINING CLIPS, AND HOLDS THE LAMP POSITIVELY IN PLACE. THE RING COMES WITH AN ATTACHED CHAIN HAVING A SS BOLT AT THE FREE END. REPLACE THE LAMPHOLDER'S EXISTING STAINLESS STEEL GROUNDING BOLT WITH THE CHAIN'S BOLT, TO MAKE THE RING CAPTIVE.



DETAIL 3
UPPER CABLE ASSEMBLY



DETAIL 4
TYPICAL PAR-56 LAMPHOLDER
SINGLE-LINE WIRE ASSEMBLY

HNTB

USER NAME = mh001r	DESIGNED SJM	REVISED -
	DRAWN SJM	REVISED -
PLOT SCALE = 20:1	CHECKED SPG	REVISED -
PLOT DATE = 26-DEC-2012	DATE	REVISED 12/28/12 ADDENDUM 1

STATE OF ILLINOIS
DEPARTMENT OF TRANSPORTATION

NAVAIDS
ALS-2 TYPICAL WIRING DIAGRAMS
FOR LIGHT BARS ON LIR TOWERS

SCALE: N.T.S. SHEET NO. 4 OF 16 SHEETS STA. N/A TO STA. N/A

F.A.P. RTE.	SECTION	COUNTY	TOTAL SHEETS	SHEET NO.
330	0105 WRS&HB	COOK	605	605BA
CONTRACT NO. 60637				

ILLINOIS FED. AID PROJECT

ADDED SHEET
GLD-06-1