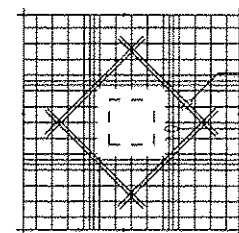


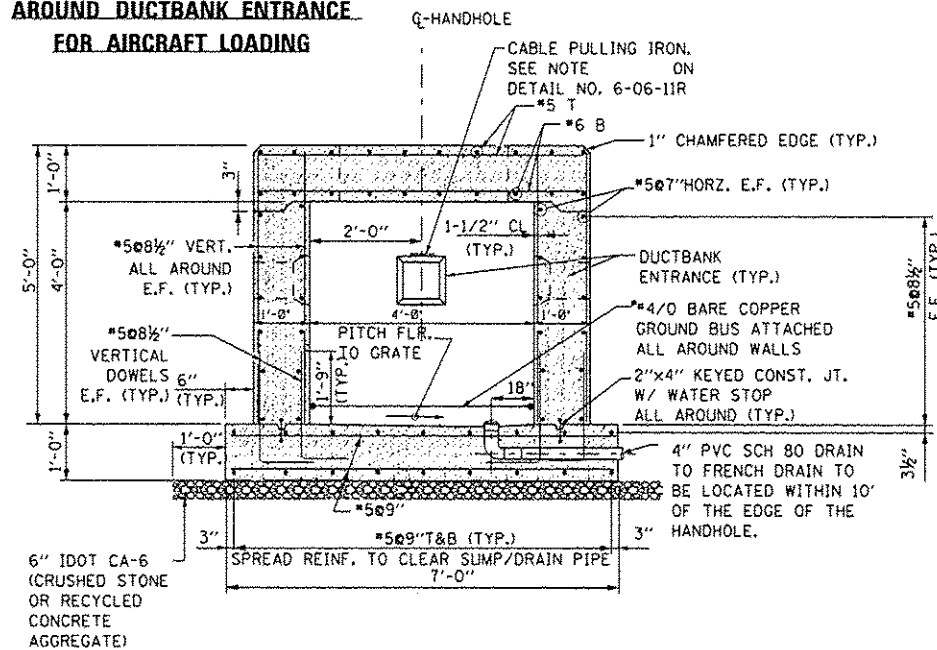
NOTES:

- IF CONTRACTOR OPTS TO USE PRECAST HANDHOLE IN LIEU OF CAST-IN-PLACE, REFER TO SHEET CU-009 FOR GENERAL NOTES AND DESIGN ASSUMPTIONS.
 - FOR CABLE SUPPORT RACK DETAIL & NOTES, SEE SHEET CU-012.
 - TOP SLAB DIAGONAL BARS NOT SHOWN FOR CLARITY. FOR PLACEMENT, SEE TOP SLAB PLAN DETAIL ON SHEET CU-012.
 - SUBGRADE BENEATH HANDHOLE FOOTING MUST BE PREPARED TO MEET A MINIMUM BEARING CAPACITY OF 2 KSF. CONTRACTOR TO VERIFY BEARING TO 3 FEET MINIMUM OR TO DEPTH AS DIRECTED BY THE COMMISSIONER. COST OF VERIFYING AND PROVIDING THE REQUIRED MINIMUM BEARING IS INCIDENTAL TO AND INCLUDED IN THE PRICE OF THE HANDHOLE.
- ACTUAL SIZE, LOCATION & NUMBER OF DUCTBANK ENTRANCE DEPENDS ON DESIGN REQUIREMENT. REFER TO DUCTBANK LAYOUT & SECTIONS. MAXIMUM OPENING 2'-5 1/2" x 2'-5 1/2" (9 WAY-4" SCH.40 PVC CONDUIT).
 - LOCATION OF PULLING IRON DEPENDS ON DUCTBANK LOCATIONS. IT MUST BE APPROXIMATELY LOCATED ALONG THE AXIS OF THE OPPOSITE DUCTBANK TO BE PULLED.

SECTION A-A TYPICAL CAST-IN PLACE CED HANDHOLE REINFORCEMENT AIRCRAFT LOADING



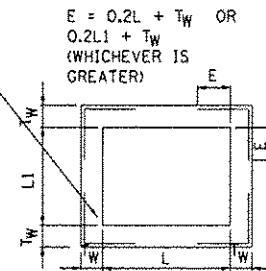
ADDITIONAL REINFORCEMENT AROUND DUCTBANK ENTRANCE FOR AIRCRAFT LOADING



NOTES:

- IF CONTRACTOR OPTS TO USE PRECAST HANDHOLE IN LIEU OF CAST-IN-PLACE, REFER TO SHEET CU-009 FOR GENERAL NOTES AND DESIGN ASSUMPTIONS.
 - FOR CABLE SUPPORT RACK DETAIL & NOTES, SEE SHEET CU-012.
 - TOP SLAB DIAGONAL BARS NOT SHOWN FOR CLARITY. FOR PLACEMENT, SEE TOP SLAB PLAN DETAIL ON SHEET CU-012.
 - FOR THE SPACING OF THE TOP SLAB REINFORCEMENT, SEE TOP SLAB PLAN DETAIL ON SHEET CU-012.
 - SUBGRADE BENEATH HANDHOLE FOOTING MUST BE PREPARED TO MEET A MINIMUM BEARING CAPACITY OF 2 KSF. CONTRACTOR TO VERIFY BEARING TO 3 FEET MINIMUM OR TO DEPTH AS DIRECTED BY THE COMMISSIONER. COST OF VERIFYING AND PROVIDING THE REQUIRED MINIMUM BEARING IS INCIDENTAL TO AND INCLUDED IN THE PRICE OF THE HANDHOLE.
- ACTUAL SIZE, LOCATION & NUMBER OF DUCTBANK ENTRANCE DEPENDS ON DESIGN REQUIREMENT. REFER TO DUCTBANK LAYOUT & SECTIONS. MAXIMUM OPENING 2'-5 1/2" x 2'-5 1/2" (9 WAY-4" SCH.40 PVC CONDUIT).

SECTION B-B TYPICAL CAST-IN PLACE CED HANDHOLE REINFORCEMENT AIRCRAFT LOADING



PLAN CORNER REINFORCEMENT FOR AIRCRAFT LOADING

HNTB

USER NAME = mikovir	DESIGNED = SJM	REVISED =
DRAWN = SJM	REVISED =	
PLOT SCALE = 2:1	CHECKED = SPG	REVISED =
PLOT DATE = 26-DEC-2012	DATE	REVISED = 12/28/12 ADDENDUM 1

STATE OF ILLINOIS
DEPARTMENT OF TRANSPORTATION

FAA
HANDHOLE DETAILS
AIRCRAFT LOADING, SHEET 2 OF 2

SCALE: N.T.S. SHEET NO. 5 OF 5 SHEETS STA. N/A TO STA. N/A

F.A.P. RTE.	SECTION	COUNTY	TOTAL SHEETS	SHEET NO.
330	0105 WRS&HB	COOK	606	605AX
				CONTRACT NO. 60637
ILLINOIS FED. AID PROJECT				

ADDED SHEET
FAA-50