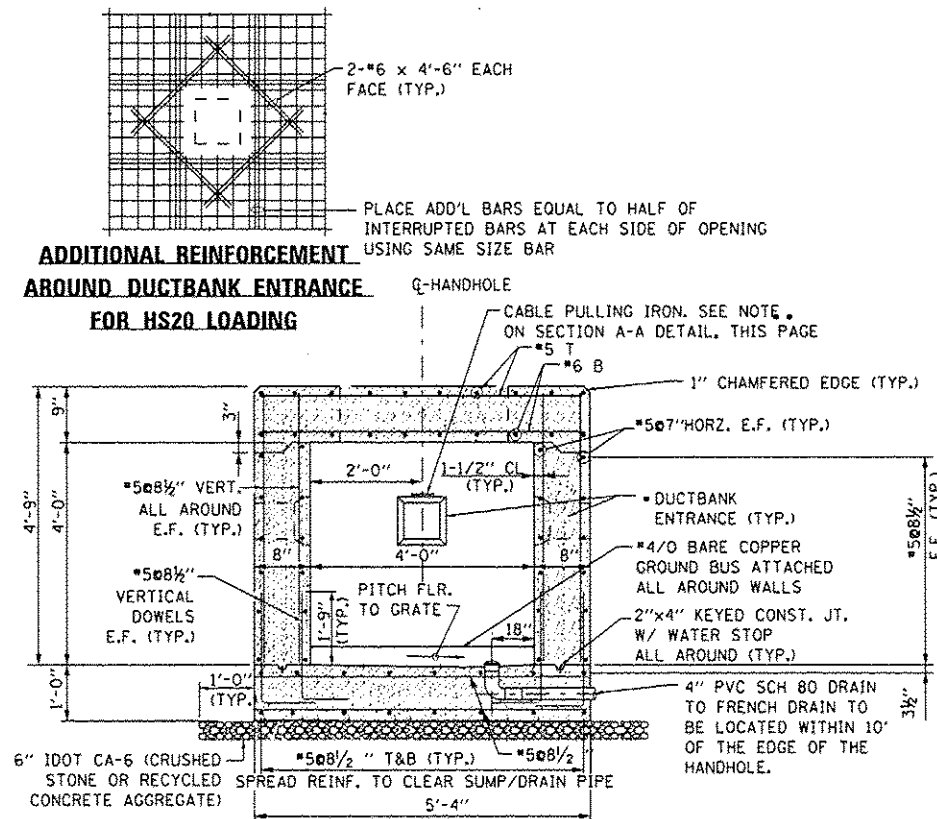


NOTES:

- IF CONTRACTOR OPTS TO USE PRECAST HANDHOLE IN LIEU OF CAST-IN-PLACE, REFER TO SHEET CU-009 FOR GENERAL NOTES AND DESIGN ASSUMPTIONS.
- FOR CABLE SUPPORT RACK DETAIL & NOTES, SEE DETAIL ON SHEET CU-010.
- TOP SLAB DIAGONAL BARS NOT SHOWN FOR CLARITY. FOR PLACEMENT, SEE TOP SLAB PLAN DETAIL ON SHEET CU-010.
- SUBGRADE BENEATH HANDHOLE FOOTING MUST BE PREPARED TO MEET A MINIMUM BEARING CAPACITY OF 2 KSF. CONTRACTOR TO VERIFY BEARING TO 3 FEET MINIMUM OR TO DEPTH AS DIRECTED BY THE COMMISSIONER. COST OF VERIFYING AND PROVIDING THE REQUIRED MINIMUM BEARING IS INCLUDED IN THE PRICE OF THE HANDHOLE.

- ACTUAL SIZE, LOCATION & NUMBER OF DUCTBANK ENTRANCE DEPENDS ON DESIGN REQUIREMENT. REFER TO DUCTBANK LAYOUT & SECTIONS. MAXIMUM OPENING 2'-5 1/2" x 2'-5 1/2" (9 WAY-4" SCH.40 PVC CONDUIT).
- LOCATION OF PULLING IRON DEPENDS ON DUCTBANK LOCATIONS. IT MUST BE APPROXIMATELY LOCATED ALONG THE AXIS OF THE OPPOSITE DUCTBANK TO BE PULLED.

SECTION A-A TYPICAL CAST-IN-PLACE FAA HANDHOLE REINFORCEMENT HS20 LOADING



NOTES:

- IF CONTRACTOR OPTS TO USE PRECAST HANDHOLE IN LIEU OF CAST-IN-PLACE, REFER TO SHEET CU-009 FOR GENERAL NOTES AND DESIGN ASSUMPTIONS.
- FOR CABLE SUPPORT RACK DETAIL & NOTES, SEE DETAIL ON SHEET CU-010.
- TOP SLAB DIAGONAL BARS NOT SHOWN FOR CLARITY. FOR PLACEMENT, SEE TOP SLAB PLAN DETAIL ON SHEET CU-010.
- FOR SPACING OF THE TOP SLAB REINFORCEMENT, SEE TOP SLAB PLAN DETAIL ON SHEET CU-010.
- SUBGRADE BENEATH HANDHOLE FOOTING MUST BE PREPARED TO MEET A MINIMUM BEARING CAPACITY OF 2 KSF. CONTRACTOR TO VERIFY BEARING TO 3 FEET MINIMUM OR TO DEPTH AS DIRECTED BY THE COMMISSIONER. COST OF VERIFYING AND PROVIDING THE REQUIRED MINIMUM BEARING IS INCLUDED IN THE PRICE OF THE HANDHOLE.

- ACTUAL SIZE, LOCATION & NUMBER OF DUCTBANK ENTRANCE DEPENDS ON DESIGN REQUIREMENT. REFER TO DUCTBANK LAYOUT & SECTIONS. MAXIMUM OPENING 2'-5 1/2" x 2'-5 1/2" (9 WAY-4" SCH.40 PVC CONDUIT).

SECTION B-B TYPICAL CAST-IN-PLACE FAA HANDHOLE REINFORCEMENT HS20 LOADING

HNTB

USER NAME: mkoar	DESIGNED: SJM	REVISED: -
DRAWN: SJM	CHECKED: SPG	REVISED: -
PLOT SCALE: 2:1	DATE: 12/28/12	ADDENDUM 1
PLOT DATE: 26-DEC-2012		

STATE OF ILLINOIS
DEPARTMENT OF TRANSPORTATION

FAA HANDHOLE DETAILS HS20 LOADING, SHEET 2 OF 2	SCALE: N.T.S.	SHEET NO. 3 OF 5 SHEETS	STA. N/A TO STA. N/A
---	---------------	-------------------------	----------------------

F.A.P. RTE. 330	SECTION 0105 WRS&HB	COUNTY COOK	TOTAL SHEETS 605	SHEET NO. 605AV
ILLINOIS FED. AID PROJECT				CONTRACT NO. 60G37

ADDED SHEET
FAA-48