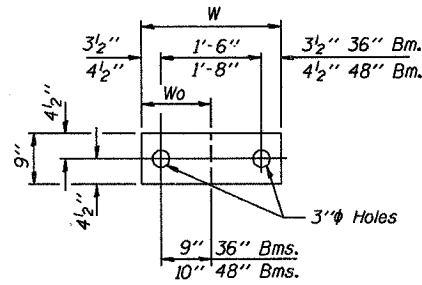
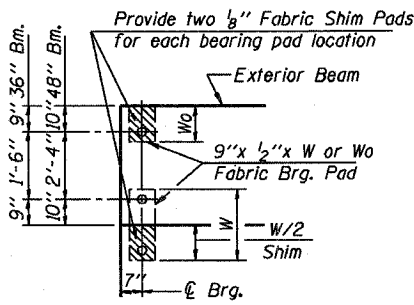
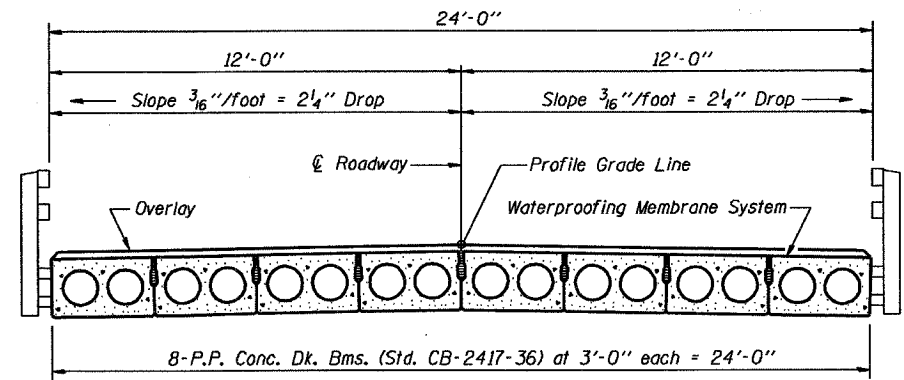


TYPICAL ELEVATIONS

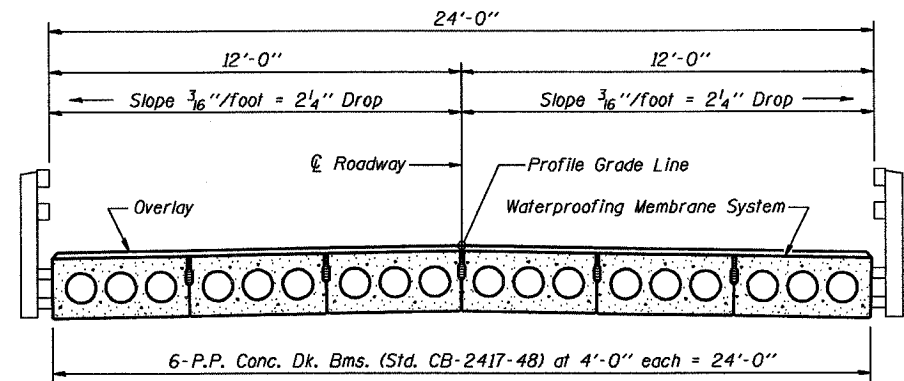


| Beam | W | Wo |
|------|-------|-----------|
| 36" | 2'-1" | 1'-0 1/2" |
| 48" | 2'-5" | 1'-2 1/2" |

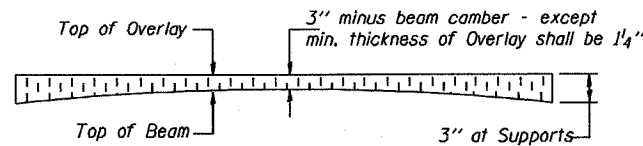
1/2" FABRIC BRG. PAD DETAILS



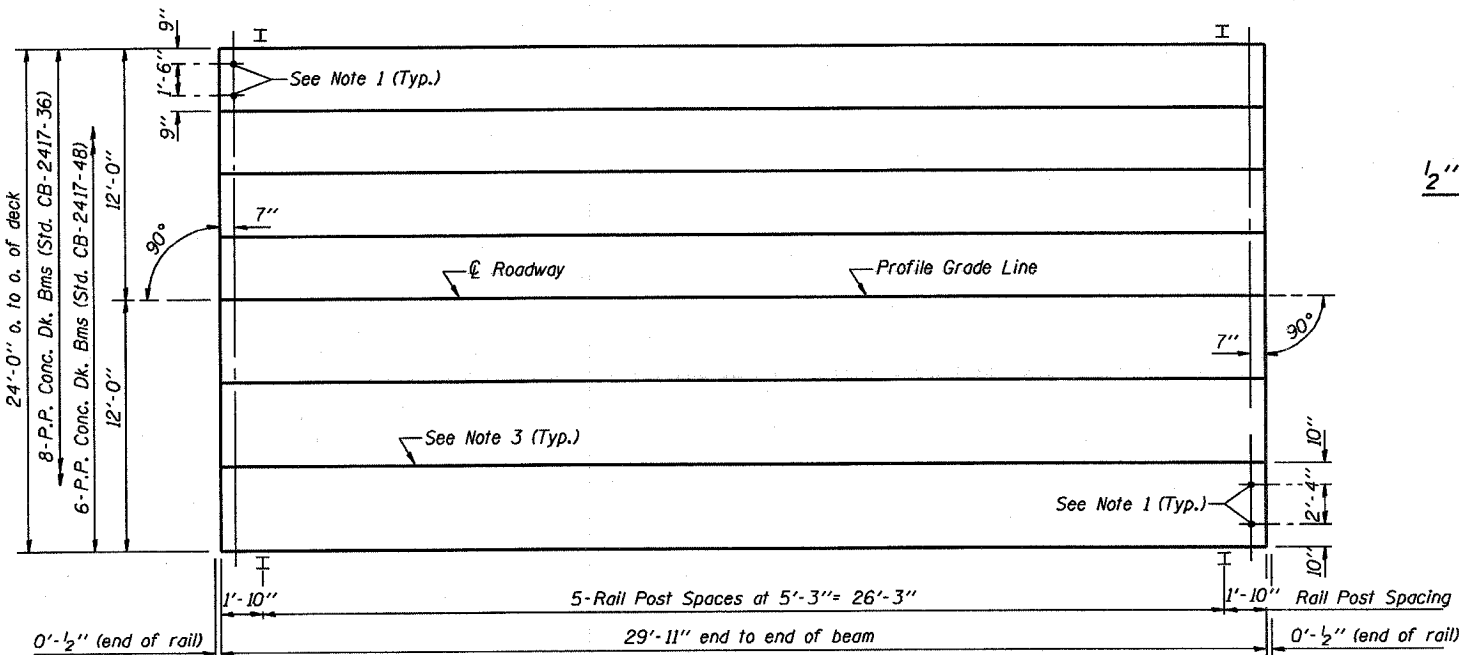
CROSS SECTION



CROSS SECTION



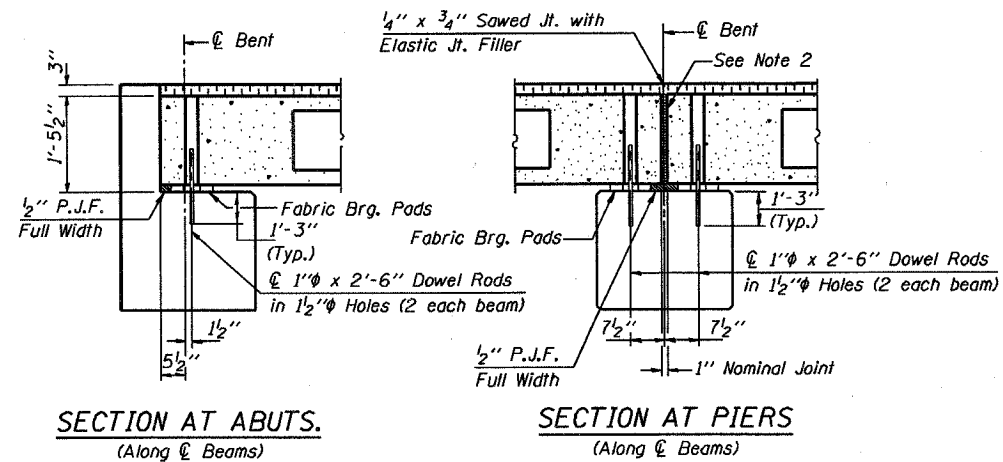
PROFILE OF OVERLAY



PLAN

NOTES

- After beams have been erected, holes shall be drilled into substructure and anchor dowels placed. Dowel holes shall be filled with non-shrink grout to top of beam and allowed to cure min. 24 hrs. prior to grouting the shear keys.
- Nominal 1" joint at centerline of Pier shall be filled with non-shrink grout.
- Longitudinal keys shall be grouted.



SECTION AT ABUTS.
(Along centerline of Beams)

SECTION AT PIERS
(Along centerline of Beams)

QUANTITIES FOR ONE SPAN

| | |
|-------------------------------|---------------|
| P.P. Conc. Dk. Bm. 17" Dp. | 720 Sq. Ft. |
| Steel Railing | 60 Ft. |
| Waterproofing Membrane System | 80.0 Sq. Yds. |
| Portland Cement Mortar | 210 Ft. 36" |
| Fairing Course | 150 Ft. 48" |

Note: Quantity of overlay for one span = 12.0 Tons

P.P.C. DECK BEAM
SUPERSTRUCTURE

| | | | |
|---------------------|----------|----------|---------|
| 24' RDWY. | 17" BMS. | 30' SPAN | 0° SKEW |
| STANDARD CS-2417-30 | | | |

Illinois Department of Transportation
PASSED APRIL 4, 2005
THOMAS S. DOMAGALA
Engineer of Bridge Design
APPROVED APRIL 4, 2005
RALPH E. ANDERSON
Engineer of Bridges and Structures