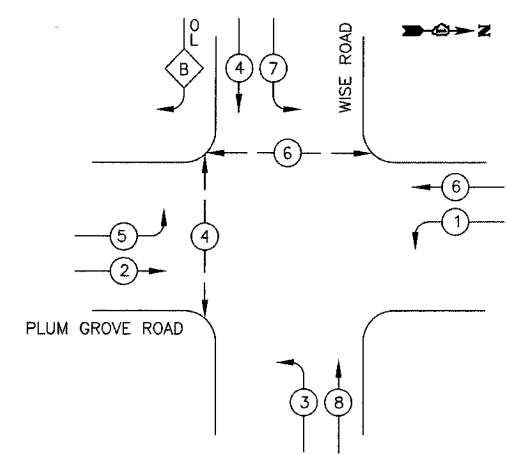


F.A.U. RTE.	SECTION	COUNTY	TOTAL SHEETS	SHEET NO.
1338	05-00083-00-FF	COOK	167	99
STA.		TO STA.		
FED. ROAD DIST. NO. 7		ILLINOIS FED. AID PROJECT M-8003(512)		

**CABLE PLAN LEGEND**

- |          |          |   |
|----------|----------|---|
| EXISTING | PROPOSED |   |
|          |          | 8" (200mm) TRAFFIC SIGNAL SECTION   |
|          |          | 12" (300mm) TRAFFIC SIGNAL SECTION  |
|          |          | 12" (300mm) PEDESTRIAN SIGNAL SECTION   |
|          |          | 12" (300mm) PEDESTRIAN SIGNAL SECTION   |
|          |          | CONTROLLER CABINET  |
|          |          | SERVICE INSTALLATION  |
|          |          | TELEPHONE CONNECTION  |
|          |          | MAGNETIC DETECTOR   |
|          |          | EMERGENCY VEHICLE LIGHT DETECTOR  |
|          |          | CONFIRMATION BEACON   |
|          |          | PUSHBUTTON DETECTOR   |
|          |          | VEHICLE DETECTOR, INDUCTION LOOP  |
|          |          | DENOTES NUMBER OF CONDUCTORS, ALL CABLE NO. 14 EXCEPT AS INDICATED. ALL LOOP DETECTOR CABLE TO BE SHIELDED. |
|          |          | MICROWAVE VEHICLE SENSOR  |
|          |          | SIGNAL FACE WITH BACKPLATE, "P" INDICATES PROGRAMMED HEAD   |
|          |          | RAILROAD CONTROL CABINET  |
|          |          | ILLUMINATED SIGN "NO LEFT TURN"   |
|          |          | ILLUMINATED SIGN "NO RIGHT TURN"  |
|          |          | GROUND ROD AT HANDHOLE (H), DOUBLE HANDHOLE (H), OR CONTROLLER (C).   |
|          |          | GROUND ROD AT POST (P), OR MAST ARM POLE (MA).  |
|          |          | GROUND ROD AT ELECTRIC SERVICE INSTALLATION   |
|          |          | GROUND CABLE IN CONDUIT NO. 6 SOLID COPPER (GREEN)  |
|          |          | FIBER OPTIC CABLE IN CONDUIT NO. 62.5/125 2-MM12F SM12F   |
|          |          | UNINTERRUPTIBLE POWER SUPPLY  |

**PROPOSED CONTROLLER SEQUENCE**



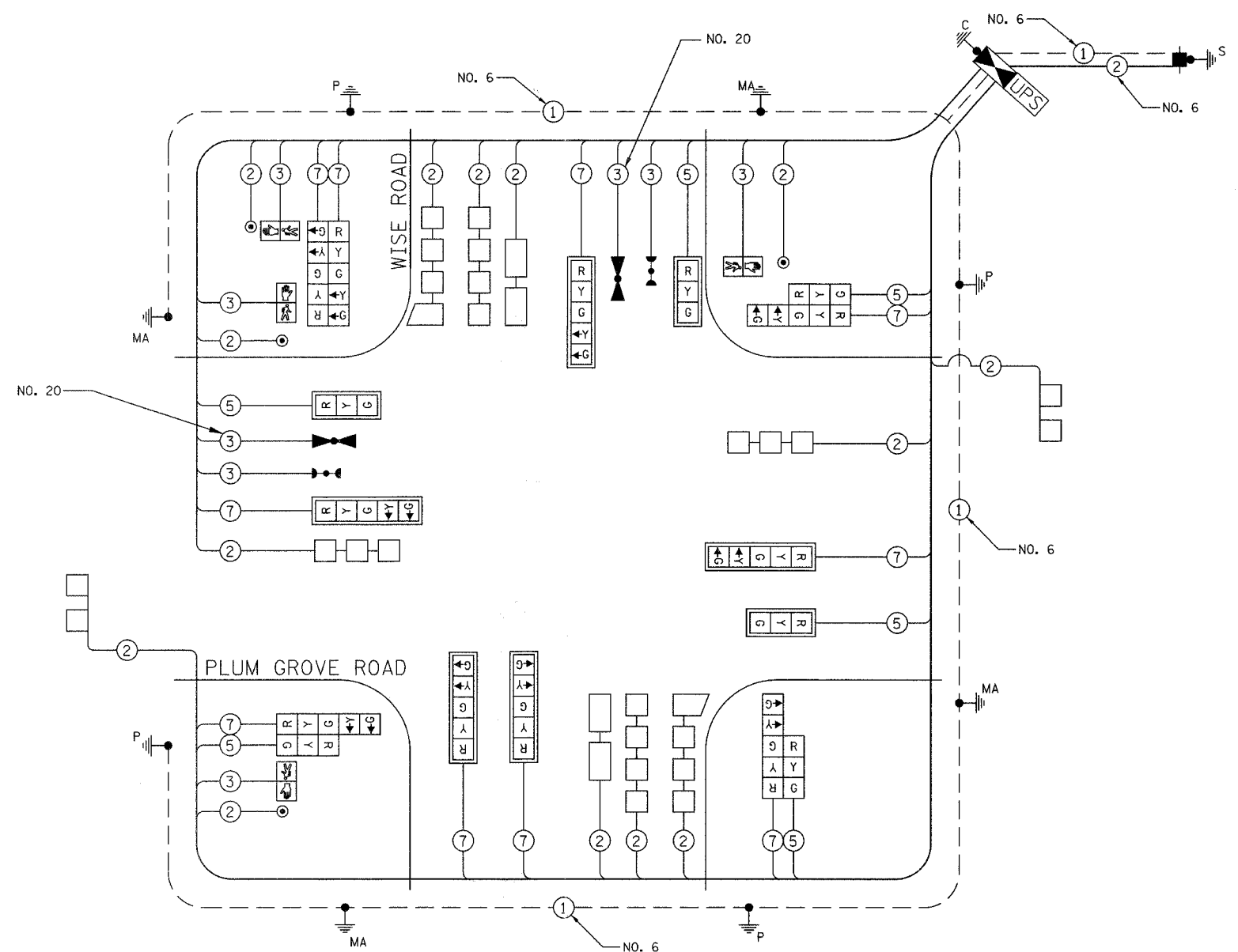
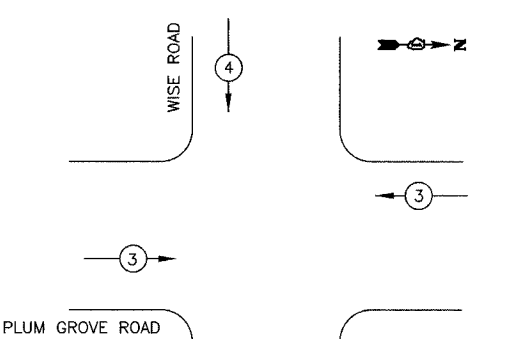
- LEGEND**
- DUAL ENTRY PHASE
  - SINGLE ENTRY PHASE
  - OVERLAP
  - PEDESTRIAN MOVEMENT
  - \* NUMBER REFERS TO ASSOCIATED PHASE

**PHASE DESIGNATION DIAGRAM**

**RIGHT TURN OVERLAP PHASE DESIGNATION**

OVERLAP LETTER	PERMISSIVE PHASE	PROTECTED PHASE
B	= 4	+ 5

**PROPOSED EMERGENCY VEHICLE PREEMPTION SEQUENCE**



CABLE PLAN NOT TO SCALE

I.D.O.T. TRAFFIC SIGNAL INSTALLATION ELECTRICAL SERVICE REQUIREMENTS					TOTAL WATTAGE
TYPE	NO. LAMPS	WATTAGE INCAND.	LED	% OPERATION	
SIGNAL (RED)	16		17	0.50	136
(YELLOW)	16		25	0.25	100
(GREEN)	16		15	0.25	60
ARROW	10		12	0.10	12
PED SIGNAL	4		25	1.00	100
CONTROLLER	1		100	1.00	100
				0.50	
				TOTAL =	508

ENERGY COSTS TO: COOK COUNTY HIGHWAY DEPARTMENT  
69 WEST WASHINGTON STREET  
CHICAGO, IL 60602

ENERGY SUPPLY: CONTACT: MICHAEL BELL  
PHONE: (630) 691-4529  
COMPANY: COM ED

FOUNDATION (DEPTH)	FT. (m)	CABLE SLACK	FT. (m)	VERTICAL	FT. (m)
TYPE A - POST	4 (1.2)	HANDHOLE	6.5 (2.0)	ALL FOUNDATIONS	3.5 (2.0)
D- CONTROLLER	4 (1.2)	DOUBLE HANDHOLE	13 (4.0)	MAST ARM (L) POLE	20'+L-2'
E- M. ARM POLE		SIGNAL POST	2 (1.0)	(6m+L-0.6m)=	
24" (600mm)	10 (3.0)	CONTROLLER CAB.	1 (0.5)	BRACKET MOUNTED	13 (4.0)
30" (750mm)	15 (4.6)	FIBER OPTIC	13 (4.0)	PED. PUSHBUTTON	4 (1.2)
36" (900mm)	15 (4.6)	ELECTRIC SERVICE	1 (0.5)	ELECTRIC SERVICE	13.5 (4.1)
		GROUND CABLE	1 (0.5)	SERVICE TO GROUND	13.5 (4.1)
				POST MOUNTED	6 (1.8)

ILLINOIS DEPARTMENT OF TRANSPORTATION  
CABLE PLAN, PHASE DESIGNATION  
DIAGRAM & EMERGENCY VEHICLE  
PREEMPTION SEQUENCE  
WISE ROAD AND PLUM GROVE ROAD

DATE: 9/28/07  
DESIGNED BY: JJE  
CHECKED BY: JRV

SCALE: NOT TO SCALE