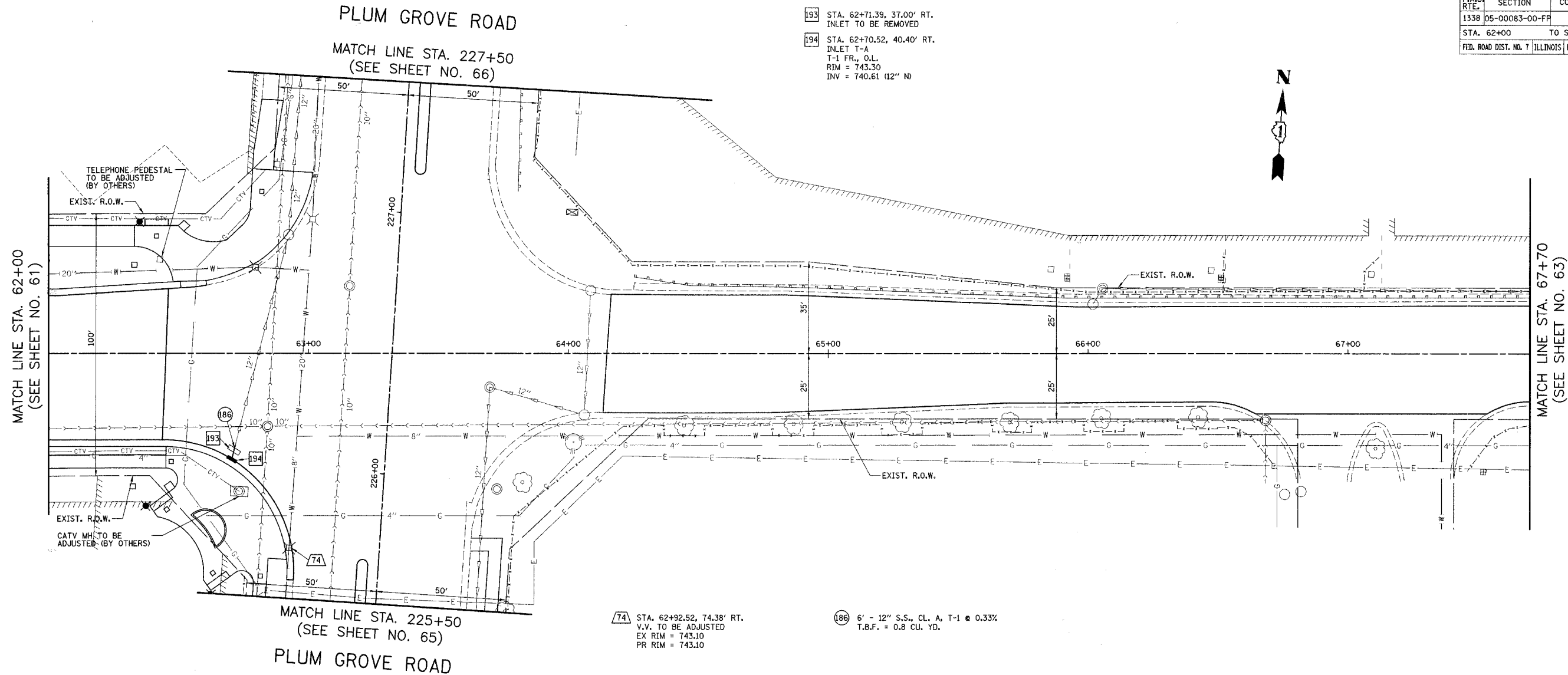


F.A.U. RTE.	SECTION	COUNTY	TOTAL SHEETS	SHEET NO.
1338	05-00083-00-FP	COOK	167	62
STA. 62+00		TO STA. 67+70		
FED. ROAD DIST. NO. 7 ILLINOIS FED. AID PROJECT M-8003(512)				

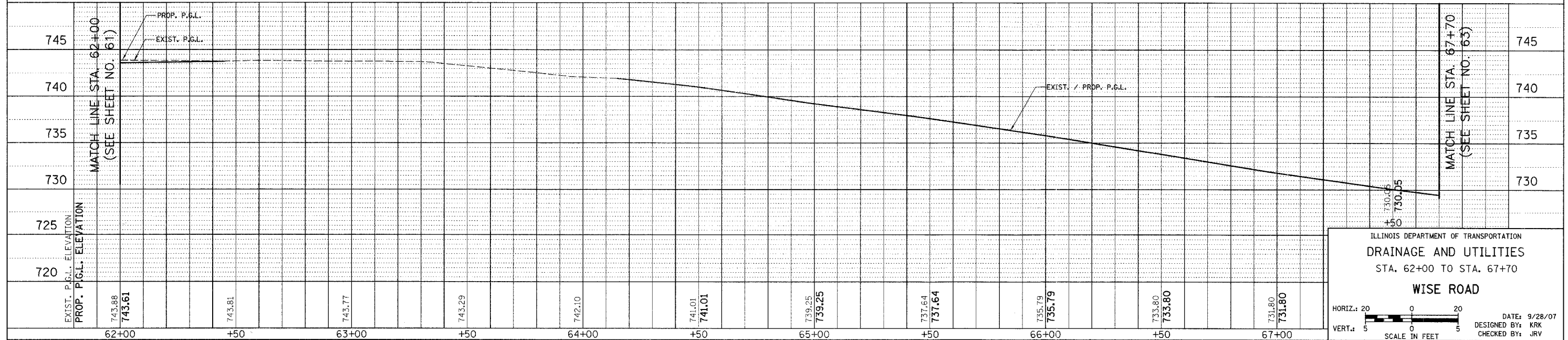
- 193 STA. 62+71.39, 37.00' RT.
INLET TO BE REMOVED
- 194 STA. 62+70.52, 40.40' RT.
INLET T-A
T-1 FR., O.L.
RIM = 743.30
INV = 740.61 (12" N)



- 74 STA. 62+92.52, 74.38' RT.
V.V. TO BE ADJUSTED
EX RIM = 743.10
PR RIM = 743.10

- 186 6' - 12" S.S., CL. A, T-1 @ 0.33%
T.B.F. = 0.8 CU. YD.

WISE ROAD



ILLINOIS DEPARTMENT OF TRANSPORTATION
DRAINAGE AND UTILITIES
STA. 62+00 TO STA. 67+70
WISE ROAD

HORIZ.: 20
VERT.: 5
SCALE IN FEET

DATE: 9/28/07
DESIGNED BY: KRK
CHECKED BY: JRV

EXIST. P.G.L. ELEVATION	PROP. P.G.L. ELEVATION	STATION
743.88	743.61	62+00
743.81		+50
743.77		63+00
743.29		+50
742.10		64+00
741.01	741.01	+50
739.25	739.25	65+00
737.64	737.64	+50
735.79	735.79	66+00
733.80	733.80	+50
731.80	731.80	67+00