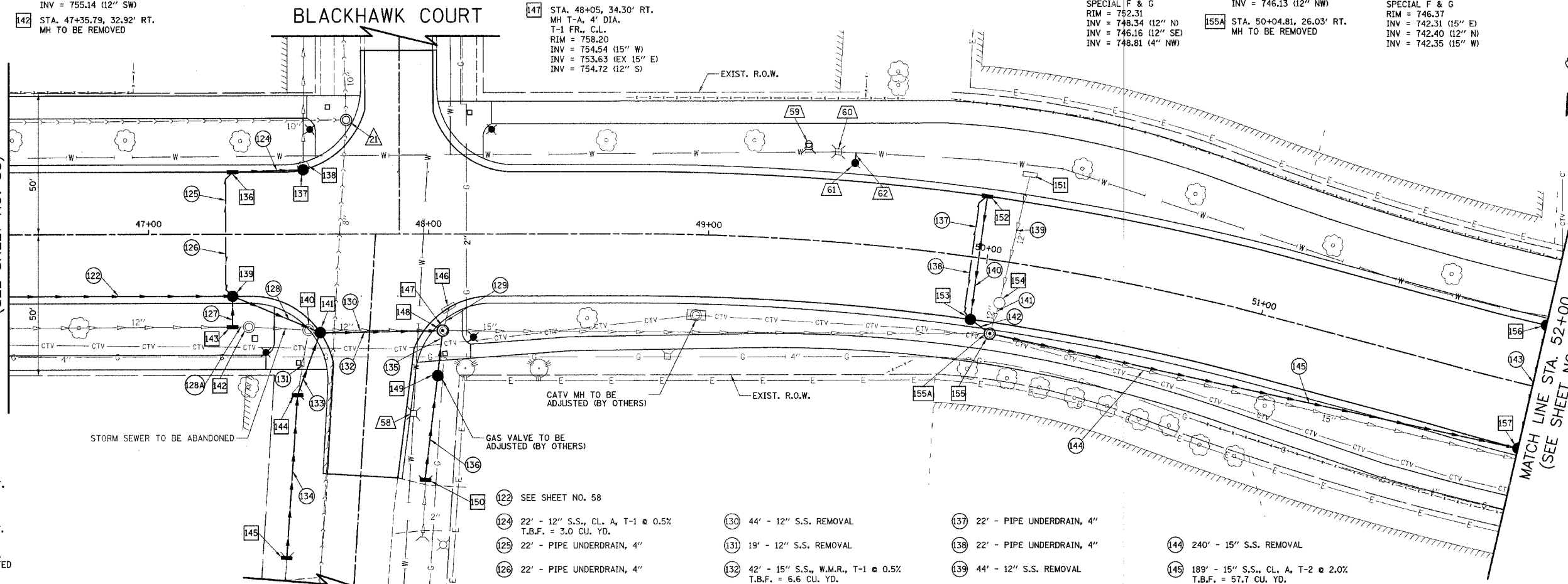


F.A.U. RTE.	SECTION	COUNTY	TOTAL SHEETS	SHEET NO.
1338	05-00083-00-FF	COOK	167	59
STA. 46+50		TO STA. 52+00		
FED. ROAD DIST. NO. 7		ILLINOIS FED. AID PROJECT M-80035121		

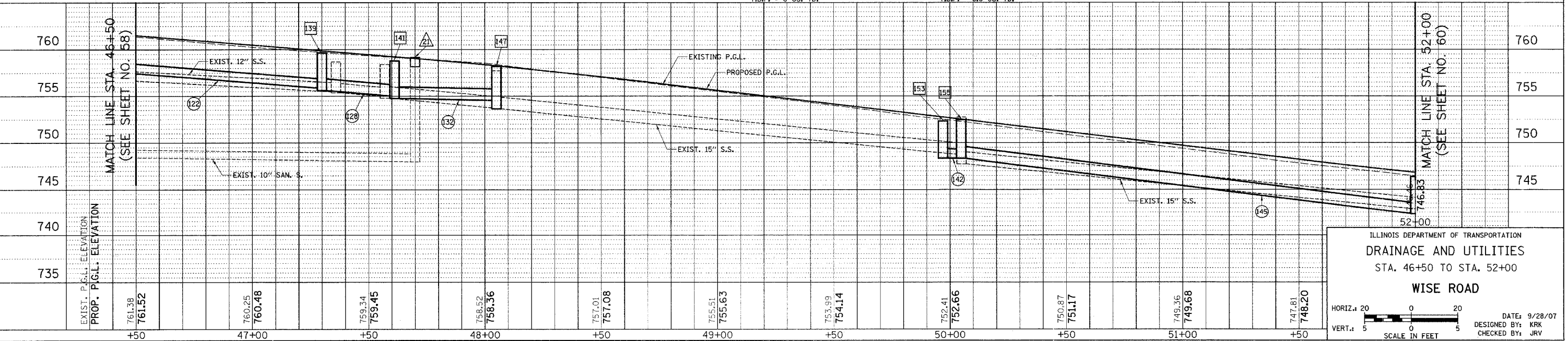
- 136 STA. 47+30, 22' LT. INLET T-A SPECIAL F & G RIM = 759.20 INV = 754.94 (12" E) INV = 755.70 (4" SW)
- 140 STA. 47+57.06, 34.08' RT. MH TO BE REMOVED
- 141 STA. 47+61.28, 34.94' RT. CB T-A, 4' DIA. SPECIAL F & G RIM = 758.76 INV = 755.01 (15" NW) INV = 754.75 (15" E) INV = 755.14 (12" SW)
- 142 STA. 47+35.79, 32.92' RT. MH TO BE REMOVED
- 143 STA. 47+30, 32.93' RT. INLET T-A T-8 GRATE RIM = 759.37 INV = 757.16 (12" N)
- 144 STA. 47+53.16, 57.07' RT. INLET T-B T-8 GRATE RIM = 758.58 INV = 755.24 (12" NE) INV = 755.39 (12" S)
- 145 STA. 47+49, 115' RT. INLET T-B T-1 FR., C.L., SPECIAL RIM = 759.67 INV = 757.91 (EX 12" S) INV = 755.67 (12" N)
- 146 STA. 48+07.21, 26.21' RT. INLET TO BE REMOVED
- 147 STA. 48+05, 34.30' RT. MH T-A, 4' DIA. T-1 FR., C.L. RIM = 758.20 INV = 754.54 (15" W) INV = 753.63 (EX 15" E) INV = 754.72 (12" S)
- 148 STA. 48+05.27, 34.30' RT. MH TO BE REMOVED
- 149 STA. 48+03.22, 50.20' RT. CB T-A, 4' DIA. T-8 GRATE RIM = 757.80 INV = 754.78 (12" N) INV = 754.89 (12" S)
- 150 STA. 47+99, 87.25' RT. INLET T-A T-1 FR., C.L., SPECIAL RIM = 759.06 INV = 757.62 (EX 12" S) INV = 755.06 (12" N)
- 151 STA. 50+10.63, 31.86' LT. INLET TO BE REMOVED
- 152 STA. 49+97, 22' LT. INLET T-A SPECIAL F & G RIM = 752.31 INV = 748.56 (12" S) INV = 748.81 (4" SW)
- 153 STA. 49+97, 22' RT. CB T-A, 4' DIA. SPECIAL F & G RIM = 752.31 INV = 748.34 (12" N) INV = 746.16 (12" SE) INV = 748.81 (4" NW)
- 154 STA. 50+06.66, 14.80' RT. CB TO BE REMOVED
- 155 STA. 50+04.81, 26.03' RT. MH T-A, 4' DIA. T-1 FR., C.L. RIM = 752.46 INV = 748.73 (EX 15" W) INV = 746.13 (15" E) INV = 746.13 (12" NW)
- 155A STA. 50+04.81, 26.03' RT. MH TO BE REMOVED
- 156 STA. 52+00, 22' LT. CB T-A, 4' DIA. SPECIAL F & G RIM = 746.39 INV = 742.64 (12" S) INV = 743.24 (12" NE)
- 157 STA. 52+00, 22.83' RT. CB T-A, 4' DIA. SPECIAL F & G RIM = 746.37 INV = 742.31 (15" E) INV = 742.40 (12" N) INV = 742.35 (15" W)

MATCH LINE STA. 46+50 (SEE SHEET NO. 58)

MATCH LINE STA. 52+00 (SEE SHEET NO. 60)



- 58 STA. 47+94.55, 63.67' RT. V.V. TO BE ADJUSTED EXIST. RIM = 758.24 PROP. RIM = 758.55
- 59 STA. 49+33.55, 33.88' LT. F.H. TO BE REMOVED
- 60 STA. 49+43.91, 31.94' LT. V.V. TO BE RECONSTRUCTED EXIST. RIM = 755.82 PROP. RIM = 755.75
- 61 STA. 49+50, 28.5' LT. FIRE HYDRANT PRESSURE CONNECTION
- 62 4' - DUCTILE IRON WATERMAIN 6" T.B.F. = 0 CU. YD.
- 122 SEE SHEET NO. 58
- 124 22' - 12" S.S., CL. A, T-1 @ 0.5% T.B.F. = 3.0 CU. YD.
- 125 22' - PIPE UNDERDRAIN, 4"
- 126 22' - PIPE UNDERDRAIN, 4"
- 127 6' - 12" S.S., CL. A, T-1 @ 0.5% T.B.F. = 0.1 CU. YD.
- 128 30' - 15" S.S., CL. A, T-1 @ 0.5% T.B.F. = 4.9 CU. YD.
- 128A 6' - 12" S.S. REMOVAL
- 129 5' - 12" S.S. REMOVAL
- 130 44' - 12" S.S. REMOVAL
- 131 19' - 12" S.S. REMOVAL
- 132 42' - 15" S.S., W.M.R., T-1 @ 0.5% T.B.F. = 6.6 CU. YD.
- 133 19' - 12" S.S., CL. A, T-1 @ 0.5% T.B.F. = 3.9 CU. YD.
- 134 57' - 12" S.S., CL. A, T-1 @ 0.5% T.B.F. = 0 CU. YD.
- 135 12' - 12" S.S., W.M.R., T-1 @ 0.5% T.B.F. = 2.3 CU. YD.
- 136 35' - 12" S.S., W.M.R., T-1 @ 0.5% T.B.F. = 0 CU. YD.
- 137 22' - PIPE UNDERDRAIN, 4"
- 138 22' - PIPE UNDERDRAIN, 4"
- 139 44' - 12" S.S. REMOVAL
- 140 44' - 12" S.S., CL. A, T-1 @ 0.5% T.B.F. = 7.2 CU. YD.
- 141 8' - 12" S.S. REMOVAL
- 142 3' - 12" S.S., CL. A, T-2 @ 1.0% T.B.F. = 1.9 CU. YD.
- 143 49' - 12" S.S., CL. A, T-1 @ 0.5% T.B.F. = 8.0 CU. YD.
- 144 240' - 15" S.S. REMOVAL
- 145 189' - 15" S.S., CL. A, T-2 @ 2.0% T.B.F. = 57.7 CU. YD.
- 146 NOT USED
- 147 STA. 47+70.56, 40.41' LT. SAN. MH TO BE ADJUSTED EXIST. RIM = 759.08 PROP. RIM = 759.16



ILLINOIS DEPARTMENT OF TRANSPORTATION
DRAINAGE AND UTILITIES
STA. 46+50 TO STA. 52+00
WISE ROAD

HORIZ.: 20
VERT.: 5

SCALE IN FEET

DATE: 9/28/07
DESIGNED BY: KRK
CHECKED BY: JRV