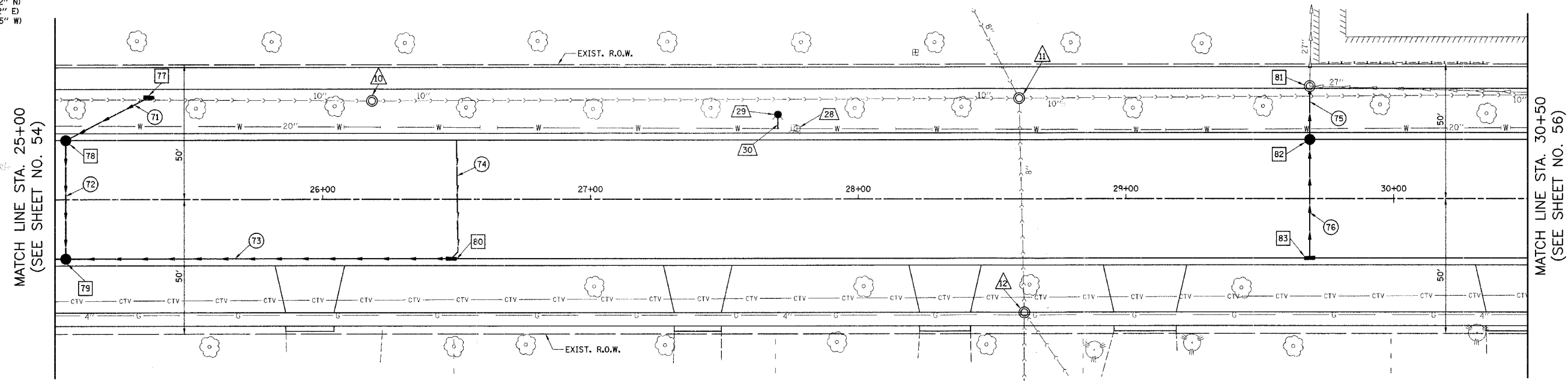


F.A.U. RTE.	SECTION	COUNTY	TOTAL SHEETS	SHEET NO.
1338	05-00083-00-FF	COOK	167	55
STA. 25+00		TO STA. 30+50		
FED. ROAD DIST. NO. 7		ILLINOIS FED. AID PROJECT M-8003(S)2		



- 77 STA. 25+35, 38.00' LT.
INLET T-A
T-8 GRATE
RIM = 769.44
INV = 766.14 (12" SW)
- 78 STA. 25+04, 22' LT.
CB T-A, 4' DIA.
SPECIAL F & G
RIM = 768.49
INV = 764.74 (12" S)
INV = 765.99 (12" NE)
- 79 STA. 25+04, 22' RT.
CB T-A, 4'-DIA.
SPECIAL F & G
RIM = 768.93
INV = 764.52 (12" N)
INV = 765.18 (12" E)
INV = 764.20 (15" W)
- 80 STA. 26+48, 22' RT.
INLET T-B
SPECIAL F & G
RIM = 770.70
INV = 765.88 (12" W)
INV = 767.20 (4" NE)
- 81 STA. 29+68.61, 41.82' LT.
MH TO BE RECONSTRUCTED
EXIST. RIM = 769.43
PROP. RIM = 769.40
INV = 761.38 (EX 27" N)
INV = 761.53 (EX 27" E)
INV = 766.07 (12" S)
- 82 STA. 29+68.61, 22' LT.
CB T-A, 4' DIA.
SPECIAL F & G
RIM = 769.66
INV = 766.13 (12" S)
INV = 766.13 (12" N)
- 83 STA. 29+68.61, 22' RT.
INLET T-A
SPECIAL F & G
RIM = 770.10
INV = 766.35 (12" N)

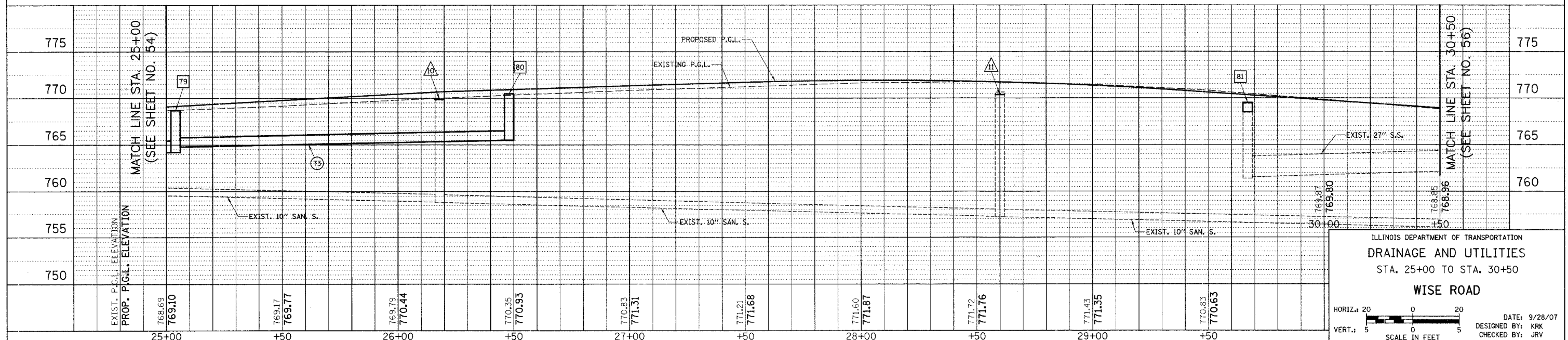


- 28 STA. 27+77.15, 26.18' LT.
F.H. TO BE REMOVED
- 29 STA. 27+70, 31.5' LT.
FIRE HYDRANT
PRESSURE CONNECTION
- 30 6' - DUCTILE IRON WATERMAIN 6"
T.B.F. = 0.4 CU. YD.

- 71 30' - 12" S.S., W.M.R., T-1 @ 0.5%
T.B.F. = 0.8 CU. YD.
- 72 44' - 12" S.S., CL. A, T-1 @ 0.5%
T.B.F. = 8.1 CU. YD.
- 73 140' - 12" S.S., CL. A, T-1 @ 0.5%
T.B.F. = 28.7 CU. YD.
- 74 44' - PIPE UNDERDRAIN, 4"
- 75 13' - 12" S.S., W.M.R., T-1 @ 0.5%
T.B.F. = 0.2 CU. YD.
- 76 44' - 12" S.S., CL. A, T-1 @ 0.5%
T.B.F. = 6.3 CU. YD.

- △10 STA. 26+18.36, 36.66' LT.
SAN. MH TO BE RECONSTRUCTED
EXIST. RIM = 770.71
PROP. RIM = 769.86
- △11 STA. 28+60.10, 37.45' LT.
SAN. MH TO BE RECONSTRUCTED
EXIST. RIM = 770.63
PROP. RIM = 770.36
- △12 STA. 28+62.04, 42.10' RT.
SAN. MH TO BE ADJUSTED
EXIST. RIM = 772.19
PROP. RIM = 772.36

WISE ROAD



ILLINOIS DEPARTMENT OF TRANSPORTATION
DRAINAGE AND UTILITIES
STA. 25+00 TO STA. 30+50
WISE ROAD

HORIZ. 20
VERT. 5
SCALE IN FEET

DATE: 9/28/07
DESIGNED BY: KRK
CHECKED BY: JRV