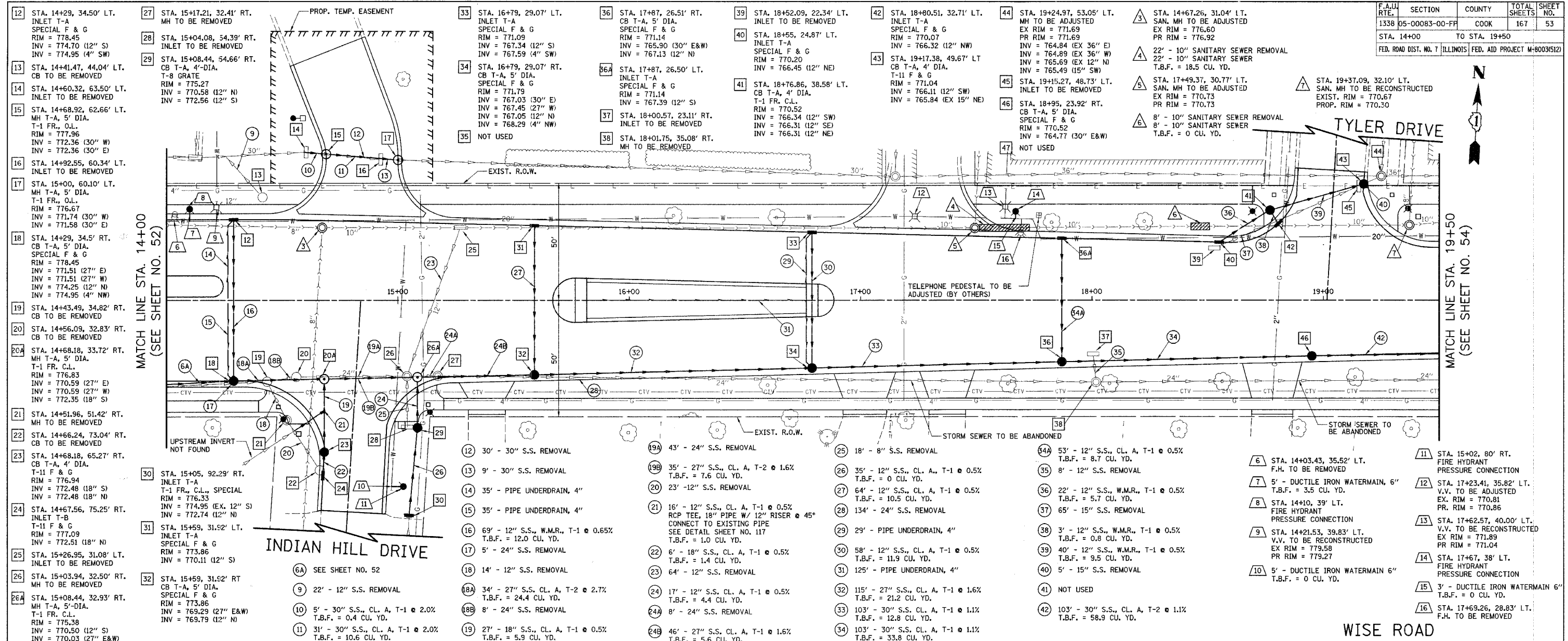


F.A.U. RTE.	SECTION	COUNTY	TOTAL SHEETS	SHEET NO.
1338	05-00083-00-FF	COOK	167	53
STA. 14+00		TO STA. 19+50		
FED. ROAD DIST. NO. 7		ILLINOIS FED. AID PROJECT M-8003(512)		



- 12 STA. 14+29, 34.50' LT. INLET T-A SPECIAL F & G RIM = 778.45 INV = 774.70 (12" S) INV = 774.95 (4" SW)
- 13 STA. 14+41.47, 44.04' LT. CB TO BE REMOVED
- 14 STA. 14+60.32, 63.50' LT. INLET TO BE REMOVED
- 15 STA. 14+68.92, 62.66' LT. MH T-A, 5' DIA. T-1 FR., O.L. RIM = 777.96 INV = 772.36 (30" W) INV = 772.36 (30" E)
- 16 STA. 14+92.55, 60.34' LT. INLET TO BE REMOVED
- 17 STA. 15+00, 60.10' LT. MH T-A, 5' DIA. T-1 FR., O.L. RIM = 776.67 INV = 771.74 (30" W) INV = 771.58 (30" E)
- 18 STA. 14+29, 34.5' RT. CB T-A, 5' DIA. SPECIAL F & G RIM = 778.45 INV = 771.51 (27" E) INV = 771.51 (27" W) INV = 774.25 (12" N) INV = 774.95 (4" NW)
- 19 STA. 14+43.49, 34.82' RT. CB TO BE REMOVED
- 20 STA. 14+56.09, 32.83' RT. CB TO BE REMOVED
- 20A STA. 14+68.18, 33.72' RT. MH T-A, 5' DIA. T-1 FR. C.L. RIM = 776.83 INV = 770.59 (27" E) INV = 770.59 (27" W) INV = 772.35 (18" S)
- 21 STA. 14+51.96, 51.42' RT. MH TO BE REMOVED
- 22 STA. 14+66.24, 73.04' RT. CB TO BE REMOVED
- 23 STA. 14+68.18, 65.27' RT. CB T-A, 4' DIA. T-1 F & G RIM = 776.94 INV = 772.48 (18" S) INV = 772.48 (18" N)
- 24 STA. 14+67.56, 75.25' RT. INLET T-B T-1 F & G RIM = 777.09 INV = 772.51 (18" N)
- 25 STA. 15+26.95, 31.08' LT. INLET TO BE REMOVED
- 26 STA. 15+03.94, 32.50' RT. MH TO BE REMOVED
- 26A STA. 15+08.44, 32.93' RT. MH T-A, 5' DIA. T-1 FR. C.L. RIM = 775.38 INV = 770.50 (12" S) INV = 770.03 (27" E&W)
- 27 STA. 15+17.21, 32.41' RT. MH TO BE REMOVED
- 28 STA. 15+04.08, 54.39' RT. INLET TO BE REMOVED
- 29 STA. 15+08.44, 54.66' RT. CB T-A, 4' DIA. T-8 GRATE RIM = 775.27 INV = 770.58 (12" N) INV = 772.56 (12" S)
- 30 STA. 15+05, 92.29' RT. INLET T-A T-1 FR., C.L., SPECIAL RIM = 776.33 INV = 774.95 (EX. 12" S) INV = 772.74 (12" N)
- 31 STA. 15+59, 31.52' LT. INLET T-A SPECIAL F & G RIM = 773.86 INV = 770.11 (12" S)
- 32 STA. 15+59, 31.52' RT. CB T-A, 5' DIA. SPECIAL F & G RIM = 773.86 INV = 769.29 (27" E&W) INV = 769.79 (12" N)
- 33 STA. 16+79, 29.07' LT. INLET T-A SPECIAL F & G RIM = 771.09 INV = 767.34 (12" S) INV = 767.59 (4" SW)
- 34 STA. 16+79, 29.07' RT. CB T-A, 5' DIA. SPECIAL F & G RIM = 771.79 INV = 767.03 (30" E) INV = 767.45 (27" W) INV = 767.05 (12" N) INV = 768.29 (4" NW)
- 35 NOT USED
- 36 STA. 17+87, 26.51' RT. CB T-A, 5' DIA. SPECIAL F & G RIM = 771.14 INV = 765.90 (30" E&W) INV = 767.13 (12" N)
- 36A STA. 17+87, 26.50' LT. INLET T-A SPECIAL F & G RIM = 771.14 INV = 767.39 (12" S)
- 37 STA. 18+00.57, 23.11' RT. INLET TO BE REMOVED
- 38 STA. 18+01.75, 35.08' RT. MH TO BE REMOVED
- 39 STA. 18+52.09, 22.34' LT. INLET TO BE REMOVED
- 40 STA. 18+55, 24.87' LT. INLET T-A SPECIAL F & G RIM = 770.20 INV = 766.45 (12" NE)
- 41 STA. 18+76.86, 38.58' LT. CB T-A, 4' DIA. T-1 FR. C.L. RIM = 770.52 INV = 766.34 (12" SW) INV = 766.11 (12" SE) INV = 766.31 (12" NE)
- 42 STA. 18+80.51, 32.71' LT. INLET T-A SPECIAL F & G RIM = 770.07 INV = 766.32 (12" NW)
- 43 STA. 19+17.38, 49.67' LT. CB T-A, 4' DIA. T-1 F & G RIM = 771.04 INV = 766.11 (12" SW) INV = 765.84 (EX 15" NE)
- 44 STA. 19+24.97, 53.05' LT. MH TO BE ADJUSTED EX RIM = 771.69 PR RIM = 771.69 INV = 764.84 (EX 36" E) INV = 764.89 (EX 36" W) INV = 765.69 (EX 12" N) INV = 765.49 (15" SW)
- 45 STA. 19+15.27, 48.73' LT. INLET TO BE REMOVED
- 46 STA. 18+95, 23.92' RT. CB T-A, 5' DIA. SPECIAL F & G RIM = 770.52 INV = 764.77 (30" E&W)
- 47 NOT USED
- 48 STA. 14+67.26, 31.04' LT. SAN. MH TO BE ADJUSTED EX RIM = 776.60 PR RIM = 776.92
- 49 22' - 10" SANITARY SEWER REMOVAL
- 50 22' - 10" SANITARY SEWER T.B.F. = 18.5 CU. YD.
- 51 STA. 17+49.37, 30.77' LT. SAN. MH TO BE ADJUSTED EX RIM = 770.73 PR RIM = 770.73
- 52 8' - 10" SANITARY SEWER REMOVAL
- 53 8' - 10" SANITARY SEWER T.B.F. = 0 CU. YD.
- 54 STA. 19+37.09, 32.10' LT. SAN. MH TO BE RECONSTRUCTED EXIST. RIM = 770.67 PROP. RIM = 770.30

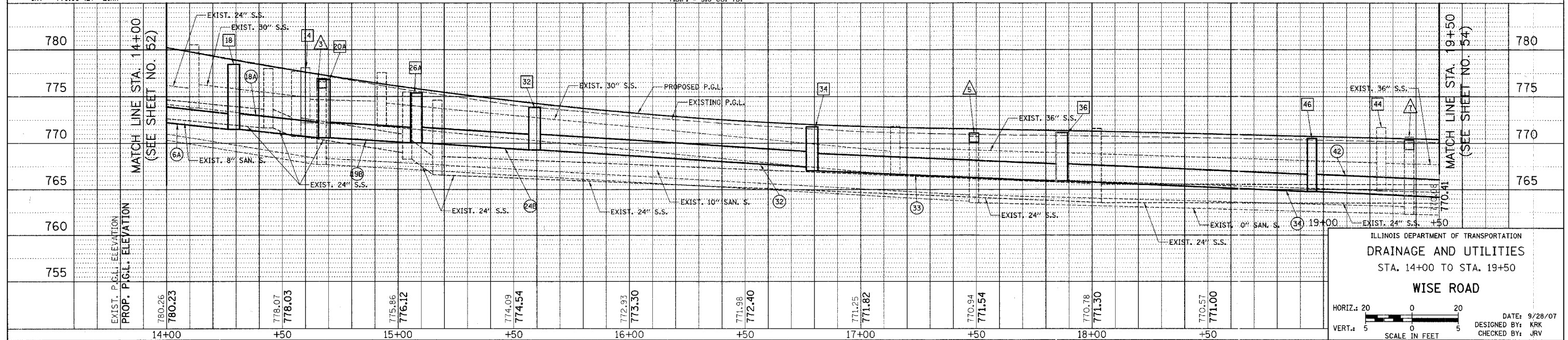
MATCH LINE STA. 14+00 (SEE SHEET NO. 52)

MATCH LINE STA. 19+50 (SEE SHEET NO. 54)

UPSTREAM INVERT NOT FOUND

MATCH LINE STA. 14+00 (SEE SHEET NO. 52)

MATCH LINE STA. 19+50 (SEE SHEET NO. 54)



WISE ROAD

ILLINOIS DEPARTMENT OF TRANSPORTATION
DRAINAGE AND UTILITIES
STA. 14+00 TO STA. 19+50
WISE ROAD

HORIZ. 20
VERT. 5
SCALE IN FEET

DATE: 9/28/07
DESIGNED BY: KRK
CHECKED BY: JRV