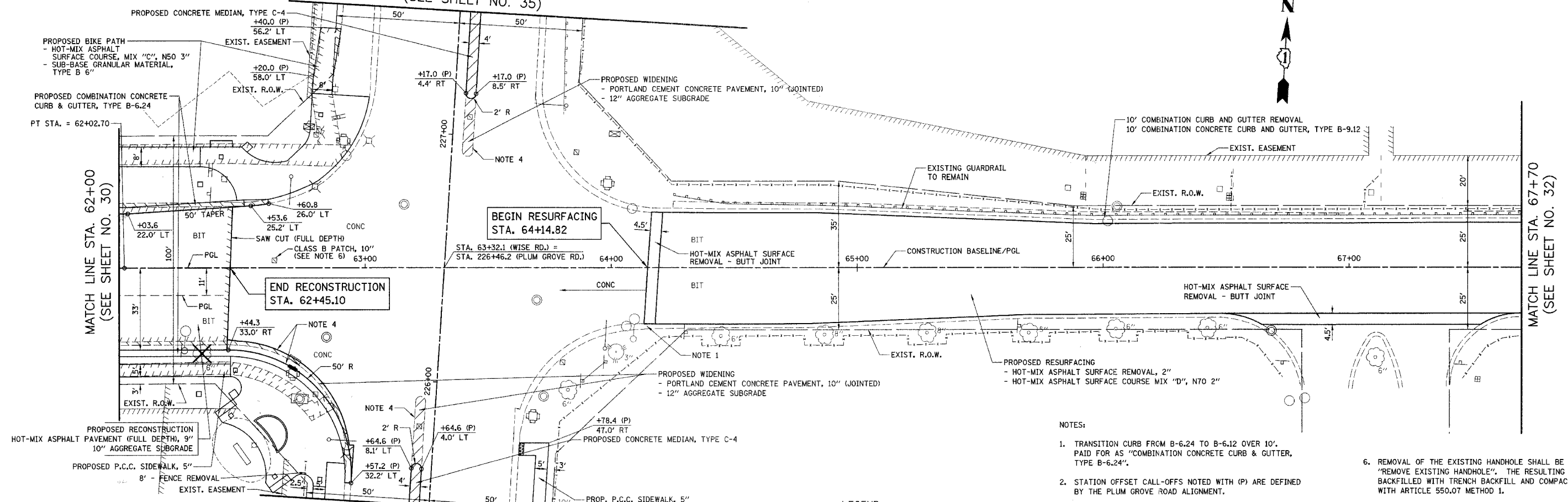


F.A.U. RTE.	SECTION	COUNTY	TOTAL SHEETS	SHEET NO.
1338	05-00083-00-FF	COOK	167	31
STA. 62+00		TO STA. 67+70		
FED. ROAD DIST. NO. 7		ILLINOIS FED. AID PROJECT M-8003(512)		

PLUM GROVE ROAD
MATCH LINE STA. 227+50
(SEE SHEET NO. 35)

PLUM GROVE ROAD
MATCH LINE STA. 225+50
(SEE SHEET NO. 34)



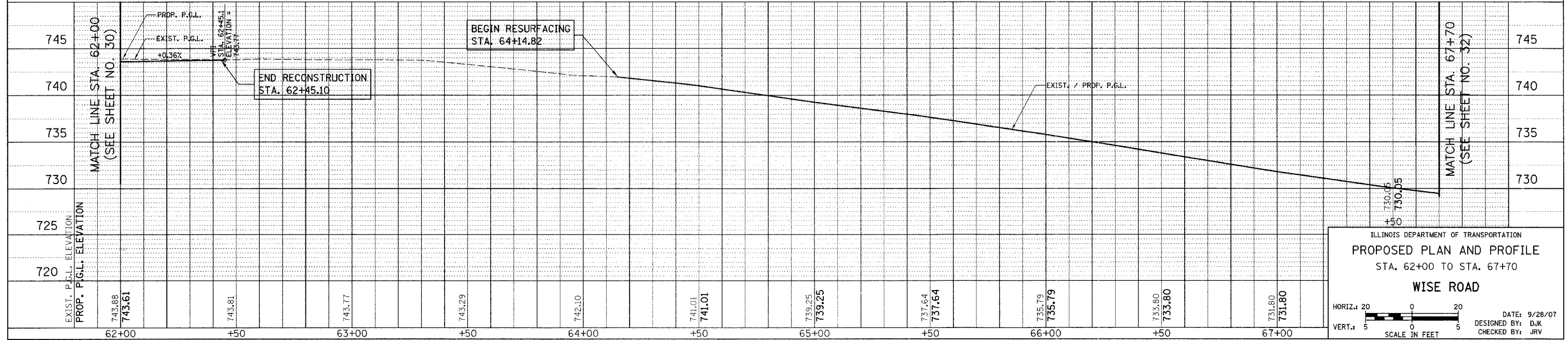
NOTES:

- TRANSITION CURB FROM B-6.24 TO B-6.12 OVER 10'. PAID FOR AS "COMBINATION CONCRETE CURB & GUTTER, TYPE B-6.24".
- STATION OFFSET CALL-OFFS NOTED WITH (P) ARE DEFINED BY THE PLUM GROVE ROAD ALIGNMENT.
- ADDITIONAL GUTTER WIDTH FOR STUBS SHALL BE INCLUDED IN THE COST OF "COMBINATION CONCRETE CURB AND GUTTER, TYPE B-6.24".
- SEE TYPICAL SECTIONS AND CCHD DETAIL (SHEET NO. 122) FOR LOCATIONS OF PROPOSED TIE BARS.
- SEE SHEETS NO. 87 TO 93 FOR CONCRETE PAVER LAYOUT AND DETECTABLE WARNING DETAILS AT THE INTERSECTING STREETS.
- REMOVAL OF THE EXISTING HANDHOLE SHALL BE PAID FOR AS "REMOVE EXISTING HANDHOLE". THE RESULTING HOLE SHALL BE BACKFILLED WITH TRENCH BACKFILL AND COMPACTED IN ACCORDANCE WITH ARTICLE 550.07 METHOD 1.

LEGEND

- REMOVAL
- DETECTABLE WARNINGS

WISE ROAD



ILLINOIS DEPARTMENT OF TRANSPORTATION
PROPOSED PLAN AND PROFILE
 STA. 62+00 TO STA. 67+70
WISE ROAD

HORIZ.: 20
 VERT.: 5

SCALE IN FEET

DATE: 9/28/07
 DESIGNED BY: DJK
 CHECKED BY: JRV