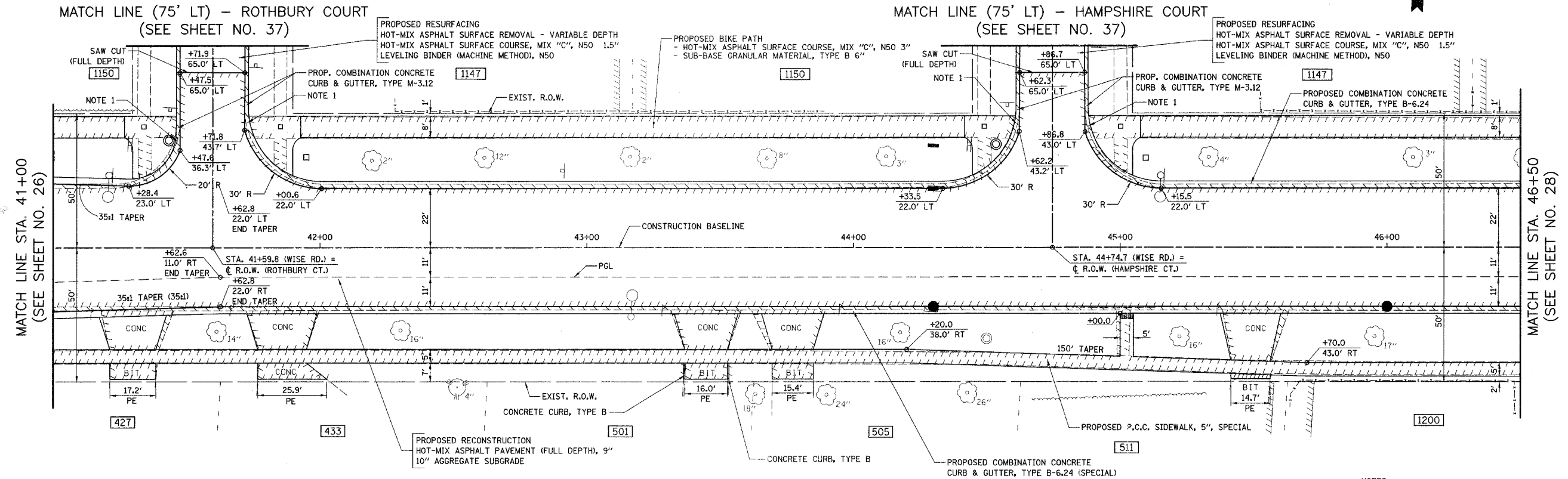


F.A.U. RTE.	SECTION	COUNTY	TOTAL SHEETS	SHEET NO.
1338	05-00083-00-FP	COOK	167	27
STA. 41+00		TO STA. 46+50		
FED. ROAD DIST. NO. 7		ILLINOIS FED. AID PROJECT M-8003(S)23		



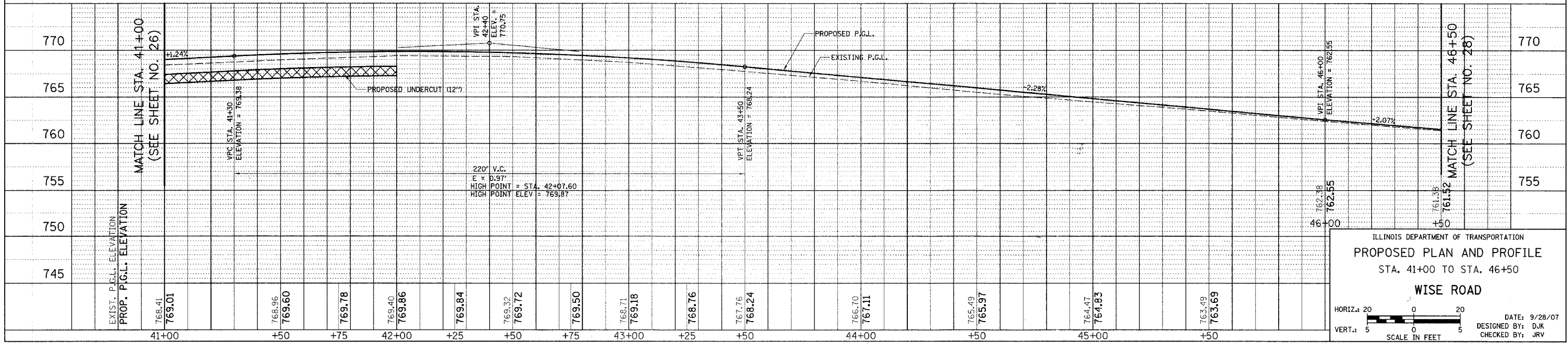
- NOTES:**
1. TRANSITION CURB FROM B-6.24 TO M-3.12 OVER 10'. PAID FOR AS "COMBINATION CONCRETE CURB & GUTTER, TYPE B-6.24".
 2. SEE SHEETS NO. 87 TO 93 FOR CONCRETE PAVER LAYOUT AND DETECTABLE WARNING DETAILS AT THE INTERSECTING STREETS.

LEGEND

REMOVAL

DETECTABLE WARNINGS

WISE ROAD



ILLINOIS DEPARTMENT OF TRANSPORTATION

PROPOSED PLAN AND PROFILE

STA. 41+00 TO STA. 46+50

WISE ROAD

HORIZ.: 20
VERT.: 5

SCALE IN FEET

DATE: 9/28/07
DESIGNED BY: DJK
CHECKED BY: JRV