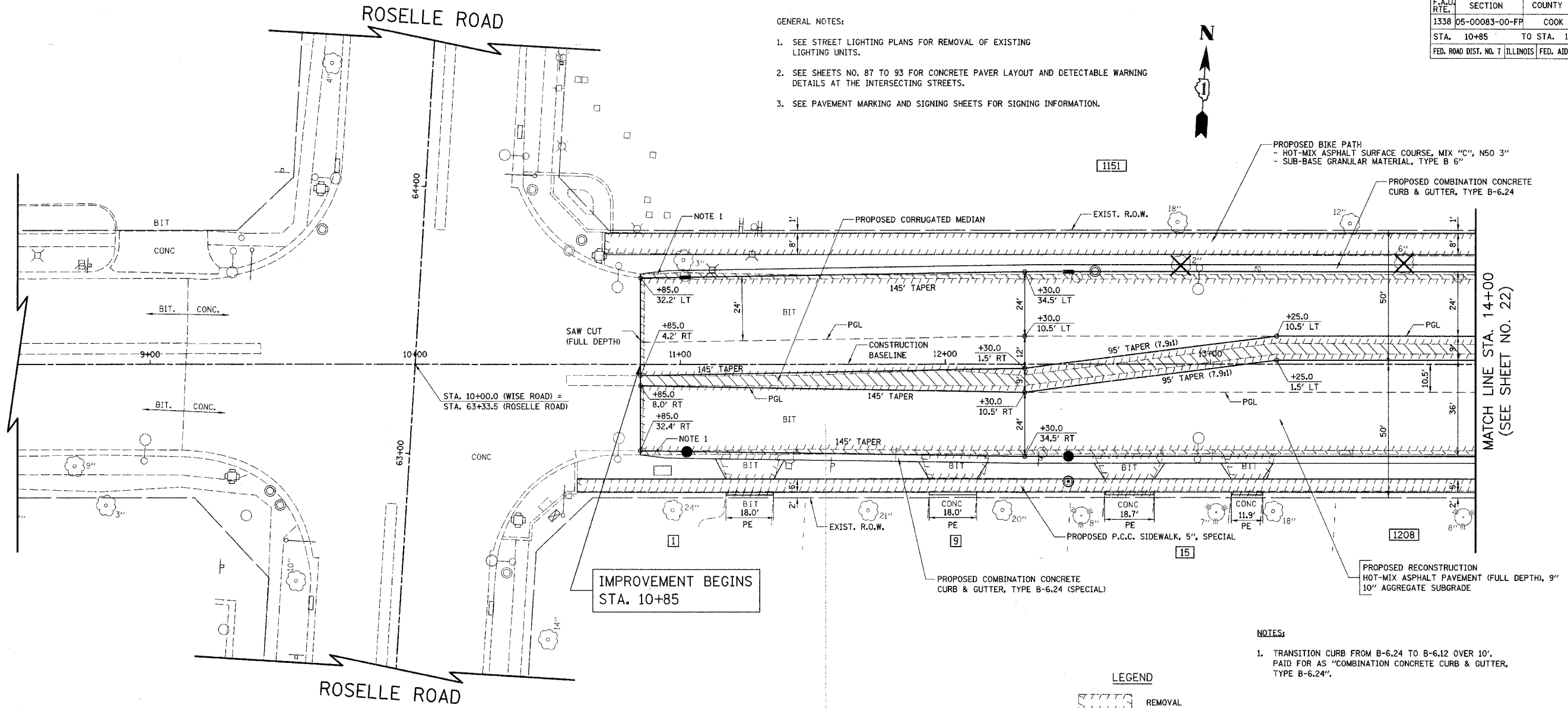


F.A.U. RTE.	SECTION	COUNTY	TOTAL SHEETS	SHEET NO.
1338	05-0083-00-FP	COOK	167	21
STA. 10+85		TO STA. 14+00		
FED. ROAD DIST. NO. 7 ILLINOIS FED. AID PROJECT M-8003(5)21				

- GENERAL NOTES:
- SEE STREET LIGHTING PLANS FOR REMOVAL OF EXISTING LIGHTING UNITS.
 - SEE SHEETS NO. 87 TO 93 FOR CONCRETE PAVER LAYOUT AND DETECTABLE WARNING DETAILS AT THE INTERSECTING STREETS.
 - SEE PAVEMENT MARKING AND SIGNING SHEETS FOR SIGNING INFORMATION.

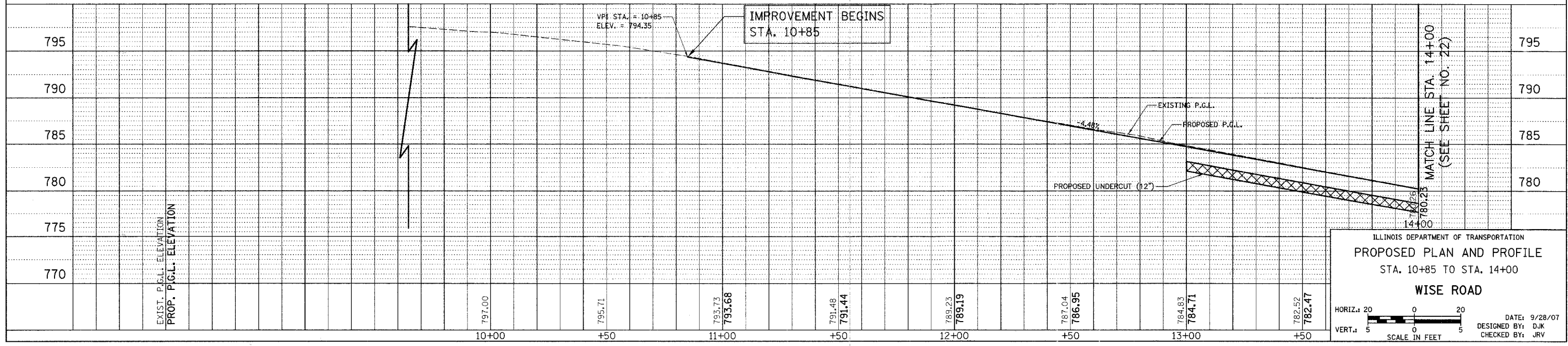


IMPROVEMENT BEGINS STA. 10+85

- NOTES:
- TRANSITION CURB FROM B-6.24 TO B-6.12 OVER 10'. PAID FOR AS "COMBINATION CONCRETE CURB & GUTTER, TYPE B-6.24".



WISE ROAD



ILLINOIS DEPARTMENT OF TRANSPORTATION
PROPOSED PLAN AND PROFILE
 STA. 10+85 TO STA. 14+00
WISE ROAD

HORIZ. SCALE: 1" = 20'
 VERT. SCALE: 1" = 5'

DATE: 9/28/07
 DESIGNED BY: DJK
 CHECKED BY: JRJ

MATCH LINE STA. 14+00 (SEE SHEET NO. 22)