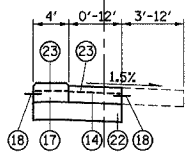
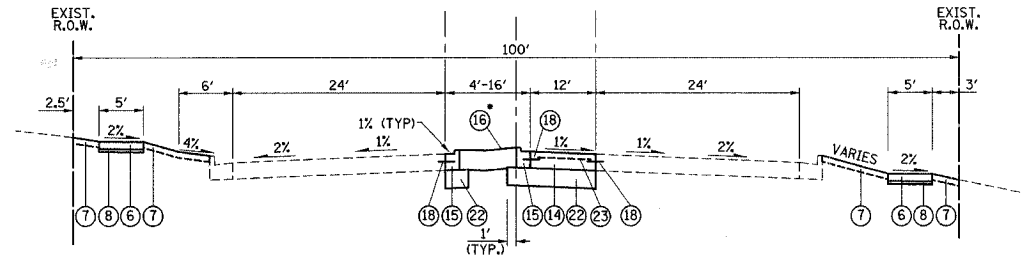


F.A.D. RTE.	SECTION	COUNTY	TOTAL SHEETS	SHEET NO.
1338	05-00083-00-FF	COOK	167	16
TYPICAL SECTIONS				
FED. ROAD DIST. NO. 7 ILLINOIS FED. AID PROJECT M-8003(512)				

CONSTRUCTION BASELINE



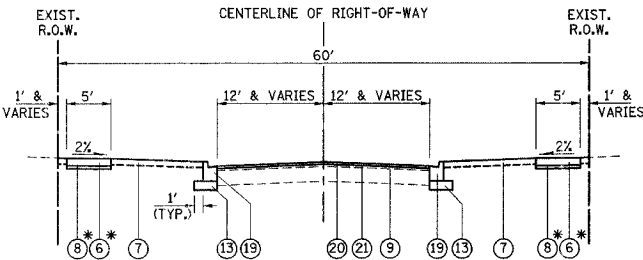
STATION 222+80.3 TO STATION 225+66.66



PROPOSED TYPICAL SECTION

PLUM GROVE ROAD
STATION 220+84.60 TO STATION 222+80.3

*SEE SHEET NO. 121 FOR ADDITIONAL TYPE M-7 MEDIAN DETAILS



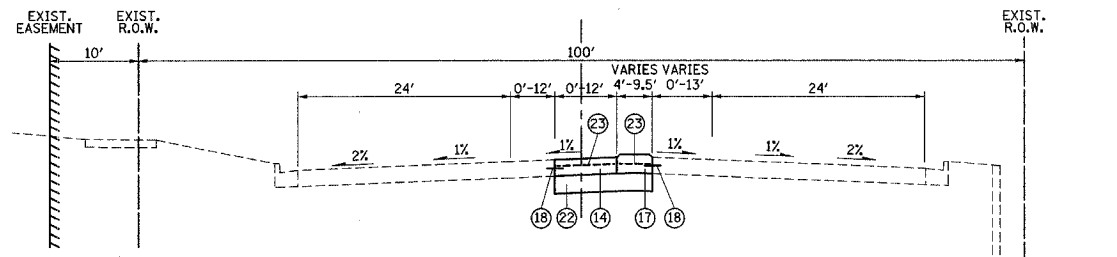
PROPOSED TYPICAL SECTION

CREST COURT, JAMESTOWN COURT, DURHAM COURT,
ROTHBURY COURT, HAMPSHIRE COURT, BLACKHAWK COURT

*SIDEWALK REPLACEMENT AT LOCATIONS DIRECTED BY THE ENGINEER

PROPOSED LEGEND

- ① HOT-MIX ASPHALT SURFACE COURSE, MIX "D", N70 (2 IN)
- ② HOT-MIX ASPHALT BINDER COURSE, IL-19.0, N70 (7 IN) (2 LIFTS)
- ③ MEDIAN SOIL MIX FURNISH AND PLACE
- ④ AGGREGATE SUBGRADE, 10"
- ⑤ COMBINATION CONCRETE CURB & GUTTER, TYPE B-6.24
- ⑥ PORTLAND CEMENT CONCRETE SIDEWALK 5 INCH
- ⑦ TOPSOIL FURNISH AND PLACE, 4" SODDING, SALT TOLERANT
- ⑧ SUBBASE GRANULAR MATERIAL, TYPE B 2" (INCLUDED IN THE COST OF PORTLAND CEMENT CONCRETE SIDEWALK 5 INCH, SPECIAL)
- ⑨ AREA REFLECTIVE CRACK CONTROL TREATMENT
- ⑩ CORRUGATED MEDIAN
- ⑪ COMBINATION CONCRETE CURB & GUTTER, TYPE B-6.12
- ⑫ HOT-MIX ASPHALT SURFACE COURSE, MIX "C", N50 (3 IN)
- ⑬ SUB-BASE GRANULAR MATERIAL, TYPE B 6"
- ⑭ PORTLAND CEMENT CONCRETE PAVEMENT, 10" (JOINTED)
- ⑮ COMBINATION CONCRETE CURB & GUTTER, TYPE M-2.12
- ⑯ HOT-MIX ASPHALT SHOULDERS, 12"
- ⑰ CONCRETE MEDIAN, TYPE C-4
- ⑱ #6 TIE BAR, 24" LONG @ 30" C-C (DRILLED & GROUTED) (EMBED 8")
- ⑲ COMBINATION CONCRETE CURB & GUTTER, TYPE M-3.12
- ⑳ HOT-MIX ASPHALT SURFACE COURSE, MIX "C", N50 (1.5 IN)
- ㉑ LEVELING BINDER (MACHINE METHOD), N50 (1.5 IN (MIN) AND VARIES)
- ㉒ AGGREGATE SUBGRADE, 12"
- ㉓ PAVEMENT FABRIC



PROPOSED TYPICAL SECTION

PLUM GROVE ROAD
STATION 227+14.96 TO STATION 232+21

*SEE SHEET NO. 121 FOR ADDITIONAL TYPE M-7 MEDIAN DETAILS

MIXTURE REQUIREMENT

PAY ITEM	AC TYPE	VOIDS
HOT-MIX ASPHALT PAVEMENT (FULL-DEPTH)		
HOT-MIX ASPHALT SURFACE COURSE, MIX "D", N70 (2")	PG 64-22	4% @ 70 GYR.
HOT-MIX ASPHALT BINDER COURSE, IL-19.0, N70 (7")	PG 64-22*	4% @ 70 GYR.
PAVEMENT RESURFACING (WISE ROAD)		
HOT-MIX ASPHALT SURFACE COURSE, MIX "D", N70 (2")	PG 64-22	4% @ 70 GYR.
PAVEMENT RESURFACING (CUL-DE-SACS)		
HOT-MIX ASPHALT SURFACE COURSE, MIX "C", N50 (1.5")	PG 64-22	4% @ 50 GYR.
LEVELING BINDER (MACHINE METHOD), N50 (1.5" MIN AND VARIES)	PG 64-22*	4% @ 50 GYR.
BIKEPATH		
HOT-MIX ASPHALT SURFACE COURSE, MIX "C", N50 (3")	PG 64-22	4% @ 50 GYR.
PATCHING		
CLASS D PATCHES (HMA BINDER IL-13 MM); 6"	PG 64-22*	4% @ 70 GYR.
DRIVEWAYS		
HOT-MIX ASPHALT SURFACE COURSE, MIX "C", N50 (2")	PG 64-22	4% @ 50 GYR.
HOT-MIX ASPHALT BASE COURSE (HMA BINDER IL-19 MM) (2 1/4" RESIDENTIAL, 5" COMMERCIAL)	PG 64-22*	4% @ 50 GYR.
MEDIAN SURFACE		
HOT-MIX ASPHALT SHOULDERS, 12" (HMA BINDER IL-19 MM)	PG 64-22*	2% @ 30 GYR.

NOTE: THE UNIT WEIGHT TO CALCULATE ALL HOT-MIX ASPHALT SURFACE MIXTURES IS 112 LB/SY-IN.

* WHEN RAP EXCEEDS 20%, THE NEW ASPHALT BINDER IN THE MIX SHALL BE PG 58-22.

ILLINOIS DEPARTMENT OF TRANSPORTATION
PROPOSED TYPICAL SECTIONS

DATE: 9/28/07
DESIGNED BY: KRK
CHECKED BY: JRV
NOT TO SCALE