

F.A.I. RTE.	SECTION	COUNTY	TOTAL SHEETS	SHEET NO.
57	D5_PATCHING_2008-3	CHAMPAIGN	10	1
FED. ROAD DIST. NO.	ILLINOIS	CONTRACT NO. 70677		

STATE OF ILLINOIS  
DEPARTMENT OF TRANSPORTATION  
DIVISION OF HIGHWAYS

**PROPOSED  
HIGHWAY PLANS**

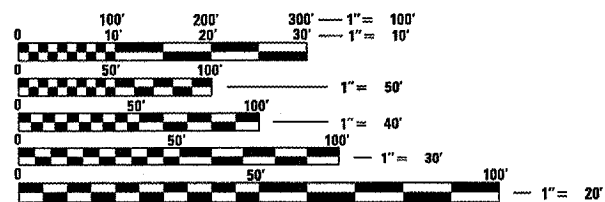
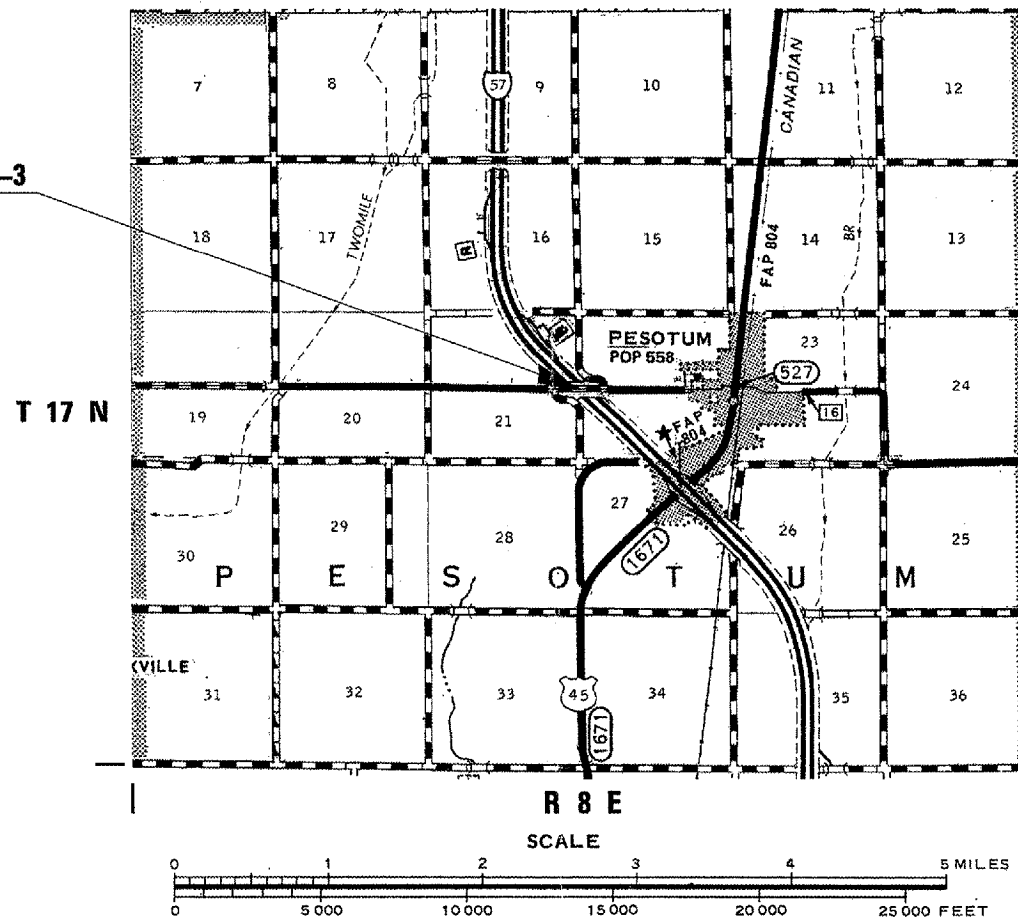
FAI ROUTE 57 (SB) (I-57)  
SECTION D5 PATCHING 2008-3  
PAVEMENT PATCHING  
AT TR297B 3.08 MI N OF DOUGLAS COUNTY LINE  
CHAMPAIGN COUNTY

C-95-057-07

FOR INDEX OF SHEETS, SEE SHEET NO. 2  
FOR SUMMARY OF QUANTITIES, SEE SHEET NO. 4



SECTION D5 PATCHING 2008-3  
BEGINS: STA 172+37.00  
ENDS: STA 169+68.00  
S.N. 010-0145  
SB I-57 UNDER TR297B



FULL SIZE PLANS HAVE BEEN PREPARED USING STANDARD ENGINEERING SCALES. REDUCED SIZED PLANS WILL NOT CONFORM TO STANDARD SCALES. IN MAKING MEASUREMENTS ON REDUCED PLANS, THE ABOVE SCALES MAY BE USED.

J.U.L.I.E.  
JOINT UTILITY LOCATION INFORMATION FOR EXCAVATION  
1-800-892-0123  
OR 811 PESOTUM TOWNSHIP

PROJECT ENGINEER : KEVIN TRAPP  
SQUAD LEADER : JASON W. STULTS  
(217) 465-4181  
CONTRACT NO. 70677

TOTAL LENGTH OF SECTION & PROJECT = 269.0 FT = 0.05 MILES  
NET LENGTH OF SECTION & PROJECT = 269.0 FT = 0.05 MILES

CURRENT ADT / DESIGN ADT CURRENT ADT 27,500 (2007)
DESIGN DESIGNATION NA

STATE OF ILLINOIS  
DEPARTMENT OF TRANSPORTATION  
DIVISION OF HIGHWAYS

SUBMITTED 10/22/07

Joseph L. Crowe  
DEPUTY DIRECTOR OF HIGHWAYS, REGION ENGINEER

Dec 7 2007  
Eric E. Horn  
ENGINEER OF DESIGN AND ENVIRONMENT

Dec 7 2007  
Christine M. Reed  
DIRECTOR OF HIGHWAYS, CHIEF ENGINEER

PRINTED BY THE AUTHORITY  
OF THE STATE OF ILLINOIS