

F.A.I. RTE.	SECTION	COUNTY	TOTAL SHEETS	SHEET NO.
74	72(7,8,9,9-1)LS	PEORIA	20	1

INDEX OF SHEETS

SHEET NO.	DESCRIPTION
1.	COVER SHEET AND INDEX OF SHEETS
2.	GENERAL NOTES, STANDARDS AND COMMITMENTS
3. - 6.	SUMMARY OF QUANTITIES
7.	SCHEDULE OF LANDSCAPE ITEMS
8.	TEMPORARY EROSION CONTROL NOTES AND SCHEDULES
9.	SCHEDULE OF QUANTITIES
10.	CALENDAR OF CONSTRUCTION
11.	OVERALL SCHEMATIC PLAN
12.	LANDSCAPE LOCATION PLAN 1
13.	LANDSCAPE LOCATION PLAN 2
14.	LANDSCAPE - LAYOUT 1
15.	LANDSCAPE - LAYOUT 2
16.	LANDSCAPE - LAYOUT 3
17.	LANDSCAPE - LAYOUT 4
18.	LANDSCAPE - LAYOUT 5
19.	LANDSCAPE - LAYOUT 6
20.	PIPING FOR LANDSCAPING WATER SERVICE

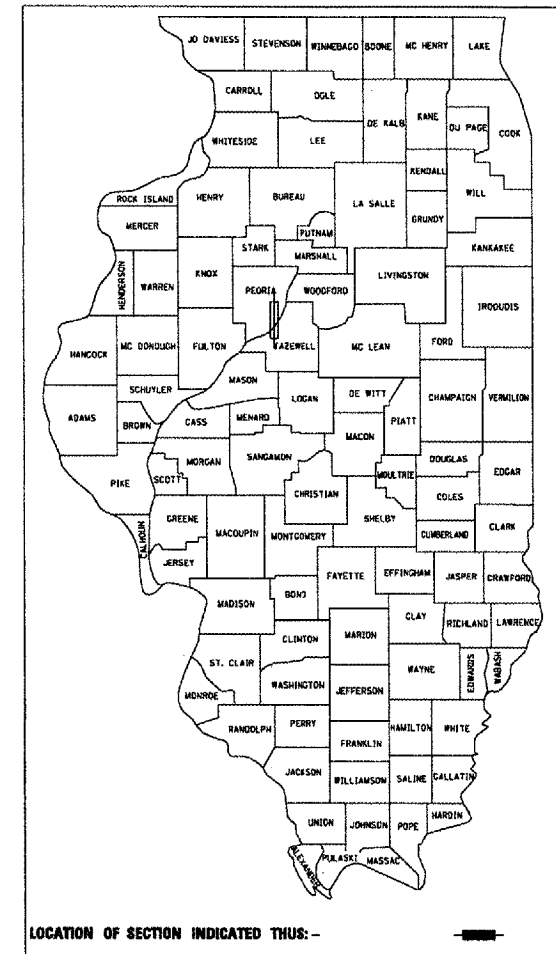
STATE OF ILLINOIS
DEPARTMENT OF TRANSPORTATION
DIVISION OF HIGHWAYS

PLANS FOR PROPOSED
FEDERAL AID INTERSTATE

F.A.I. ROUTE 74 (I-74)
SECTION 72(7,8,9,9-1)LS-1

LANDSCAPING ALONG I-74 FROM ARMSTRONG AVENUE
TO ILLINOIS RIVER IN PEORIA (EASTBOUND ONLY)
PEORIA COUNTY
C-94-002-08

D-94-001-08



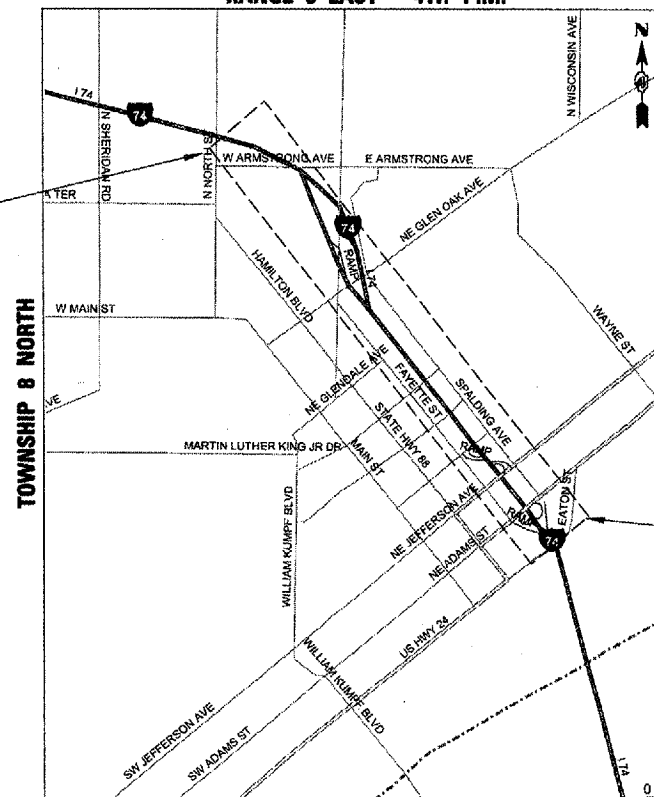
LOCATION OF SECTION INDICATED THUS: -

LIST OF STANDARDS

SEE SHEET NO. 2

RANGE 8 EAST - 4TH P.M.

PROJECT START
EASTBOUND STA. 148 + 450



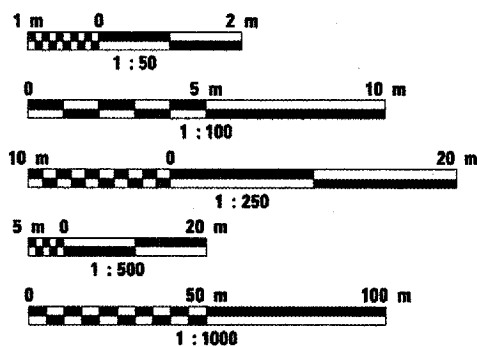
LOCATION MAP
MAP SCALE: N.T.S.

PROJECT END
EASTBOUND STA. 150 + 400

GROSS LENGTH PROJECT=1,950 m=1.95 km
NET LENGTH PROJECT=1,835 m=1.84 km

FINAL PLANS

METRIC RATIOS



FULL SIZE PLANS HAVE BEEN PREPARED USING STANDARD
ENGINEERING SCALES. REDUCED SIZED PLANS WILL NOT
CONFORM TO STANDARD SCALES. IN MAKING MEASUREMENTS
ON REDUCED PLANS, THE ABOVE SCALES MAY BE USED.

J.U.L.I.E.
JOINT UTILITY LOCATION INFORMATION FOR EXCAVATION
1-800-892-0123

CONTRACT NO. 68764
CATALOG NO. 031087-61D

DESCRIPTION OF WORK

THIS PROJECT INCLUDES INSTALLATION OF
LANDSCAPING MATERIALS AND ALL OTHER
COLLATERAL WORK.

STATE OF ILLINOIS
DEPARTMENT OF TRANSPORTATION
DIVISION OF HIGHWAYS

SUBMITTED 00729 07

[Signature]
DISTRICT ENGINEER

December 7, 07
[Signature]
ENGINEER OF DESIGN AND ENVIRONMENT

December 7, 07
[Signature]
DIRECTOR, DIVISION OF HIGHWAYS

PRINTED BY THE AUTHORITY OF THE STATE OF ILLINOIS

PROJECT ENGINEER: RICHARD DOTSON 309-671-3455

DESIGNER: CHRISTOPHER MAUSHARD 309-671-3464

F.A.I. RTE.	SECTION	COUNTY	TOTAL SHEETS	SHEET NO.
74	72(7,8,9,9-1)LS-1	PEORIA	20	2
STA.		TO STA.		
FED. ROAD DIST. NO.		ILLINOIS	FED. AID PROJECT	

GENERAL NOTES:

1. MICROSTATION AND GEOPAK FILES OF THIS PROJECT WILL BE MADE AVAILABLE TO THE CONTRACTOR. IF THERE IS A CONFLICT BETWEEN THE ELECTRONIC FILES AND THE PRINTED CONTRACT PLANS AND DOCUMENTS, THE PRINTED CONTRACT PLANS AND DOCUMENTS SHALL TAKE PRECEDENCE OVER THE ELECTRONIC FILES. THE CONTRACTOR SHALL ACCEPT ALL RISK ASSOCIATED WITH USING THE ELECTRONIC FILES AND SHALL HOLD THE DEPARTMENT HARMLESS FOR ANY ERRORS OR OMISSIONS IN THE ELECTRONIC FILES AND THE DATA CONTAINED THEREIN. ERRORS OR DELAYS RESULTING FROM THE USE OF THE ELECTRONIC FILES BY THE CONTRACTOR SHALL NOT RESULT IN AN EXTENSION OF TIME FOR ANY INTERIM OR FINAL COMPLETION DATE OR SHALL NOT BE CONSIDERED CAUSE FOR ADDITIONAL COMPENSATION. THE CONTRACTOR SHALL NOT USE, SHARE, OR DISTRIBUTE THESE ELECTRONIC FILES EXCEPT FOR THE PURPOSE OF CONSTRUCTING THIS CONTRACT. ANY CLAIMS BY THIRD PARTIES DUE TO USE OR ERRORS SHALL BE THE SOLE RESPONSIBILITY OF THE CONTRACTOR. THE CONTRACTOR SHALL INCLUDE THIS DISCLAIMER WITH THE TRANSFER OF THESE ELECTRONIC FILES TO ANY OTHER PARTIES AND SHALL INCLUDE APPROPRIATE LANGUAGE BINDING THEM TO SIMILAR RESPONSIBILITIES.
2. ADD THE FOLLOWING SENTENCE TO THE END OF PARAGRAPH 670.02 (i) AND 670.04 (e):
ALL OF THE TELEPHONE LINES PROVIDED SHALL HAVE UNPUBLISHED NUMBERS.

PROJECT SPECIFIC GENERAL NOTES:

1. BEFORE STARTING ANY EXCAVATION, THE CONTRACTOR SHALL CALL "J.U.L.I.E." AT 800-892-0123 FOR FIELD LOCATIONS OF BURIED ELECTRIC TELEPHONE AND GAS FACILITIES. (48 HOURS NOTIFICATION IS REQUIRED). REFER ART. 107.31 FOR UTILITIES PROPERTIES AND SERVICES
2. THE CONTRACTOR SHALL BE RESPONSIBLE TO VERIFY ALL DIMENSIONS AND CONDITIONS EXISTING IN THE FIELD PRIOR TO CONSTRUCTION AND ORDERING MATERIALS.
3. THE ACTUAL LOCATION OF PROPOSED LANDSCAPING SHALL BE ADJUSTED IN THE FIELD TO AVOID UTILITIES.
4. WHERE SECTION OR SUB-SECTION MONUMENTS ARE ENCOUNTERED, THE ENGINEER SHALL BE NOTIFIED BEFORE SUCH MONUMENTS ARE REMOVED. THE CONTRACTOR SHALL PROTECT AND CAREFULLY PRESERVE ALL PROPERTY MARKERS AND MONUMENTS UNTIL THE OWNER, AN AUTHORIZED SURVEYOR, OR AGENT HAS WITNESSED THEIR LOCATION.
5. ALL PLANS ARE IN SCALE, FOR CONSTRUCTION DIMENSIONS THE CONTRACTOR NEED TO VERIFY ON SITE.
6. REMOVAL OF UNDERBRUSH, DEBRIS OR OTHER MISCELLANEOUS ITEMS TO ALLOW THE PLACEMENT OF LANDSCAPING ITEMS SHALL BE INCLUDED IN THE PRICE OF THE ASSOCIATED PAY ITEMS.
7. THE CONTRACTOR SHALL USE CARE IN GRADING OR EXCAVATING NEAR ANY AND ALL EXISTING ITEMS WHICH WILL NOT BE REMOVED. ANY DAMAGE DONE TO EXISTING ITEMS BY THE CONTRACTOR SHALL BE REPAIRED BY THE CONTRACTOR AT THE CONTRACTOR'S OWN EXPENSE.
8. INTERSEEDING, CLASS 2A AND MULCH, METHOD 2 LOCATIONS WILL BE SELECTED BY THE RESIDENT ENGINEER BASED ON CONDITIONS OF EXISTING TURF.
9. CONTROL ALL INVASIVE WEED SPECIES FOUND IN THE CLASS 4A AND 5 SEEDING AREAS AS DIRECTED BY THE ENGINEER. THE CONTROL IN SUCH AREAS SHALL BE COMPLETED AT THE TIME OF THE PHASE I, II, III AND IV COMPLETION DATES. IF NOT COMPLETED AT EACH COMPLETION DATE, THE COMPLETION OF THAT PHASE WILL NOT BE ACCEPTED AND WILL RESULT IN A "FAILURE TO COMPLETE LANDSCAPE CONSTRUCTION AND LANDSCAPE ESTABLISHMENT WORK" AND BE CHARGED ACCORDINGLY.

COMMITMENTS:

COMMITMENTS SHALL NOT BE ALTERED WITHOUT WRITTEN APPROVAL OF ALL PARTIES TO WHICH THE COMMITMENT WAS MADE

NO COMMITMENTS HAVE BEEN INCURRED ON THIS PROJECT.

STANDARDS LIST:

202001-01 EARTH MEDIAN DITCH CHECK
 280001-04 TEMPORARY EROSION CONTROL SYSTEM
 701106-00 OFF-ROAD OPERATIONS, MULTILANE, MORE THAN 4.5 m (15') AWAY, FOR SPEEDS ≥ 45 MPH
 701101-01 OFF-ROAD OPERATIONS, MULTILANE LESS THAN 4.5 m (15') AWAY FOR SPEEDS ≥ 45 MPH
 701201-02 LANE CLOSURE, 2L, 2W, DAY ONLY ON-ROAD TO 600mm OFF FOR SPEEDS ≥ 45 MPH
 701400-02 APPROACH TO LANE CLOSURE, FREEWAY/EXPRESSWAY
 701406-01 LANE CLOSURE, MULTILANE, DAY OPERATIONS ONLY FOR SPEEDS ≥ 45 MPH
 701411-04 LANE CLOSURE, MULTILANE AT ENTRANCE OR EXIT RAMP FOR SPEEDS ≥ 45 MPH
 701426-02 LANE CLOSURE, MULTILANE, INTERMITTENT OR MOVING OPER. FOR SPEEDS ≥ 45 MPH
 701502-02 URBAN LANE CLOSURE 2L, 2W, WITH BIDIRECTIONAL LEFT TURN LANE
 701601-05 URBAN LANE CLOSURE, MULTILANE 1W OR 2W WITH NONTRAVERSABLE MEDIAN
 701602-03 URBAN LANE CLOSURE, MULTILANE 2W WITH BIDIRECTIONAL LEFT TURN LANE
 701606-05 URBAN LANE CLOSURE, MULTILANE 2W WITH MOUNTABLE MEDIAN
 701901 TRAFFIC CONTROL DEVICES

ILLINOIS DEPARTMENT OF TRANSPORTATION
 F.A.I. ROUTE 74 (I-74)
 GENERAL NOTES,
 STANDARDS AND
 COMMITMENTS

DRAWN BY: K.K.K.

DATE:

CHECKED BY: R.J.D.

SUMMARY OF QUANTITIES

P. A. L. SITE	SECTION	COUNTY	STA. FROM	SHEET NO.
74	7217,8,9,9-1LS-1	PEORIA	20	3
STA.	TO STA.			
FED. ROAD DIST. NO.	CLASS.	FED. AID PROJECT		

SUMMARY OF QUANTITIES			TOTAL QUANTITIES	CONSTRUCTION TYPE CODE				
CODE NO	ITEM	UNIT		100% STATE Y003				
28000300	TEMPORARY DITCH CHECKS	EACH	20	20				
28000500	INLET AND PIPE PROTECTION	EACH	16	16				
67000400	ENGINEER'S FIELD OFFICE, TYPE A	CAL MO	10	10				
67100100	MOBILIZATION	L SUM	1	1				
70101700	TRAFFIC CONTROL AND PROTECTION	L SUM	1	1				
A2000420	TREE, ACER NIGRUM (BLACK MAPLE), 2-1/2" CALIPER, BALLED AND BURLAPPED	EACH	1	1				
A2002612	TREE, CARYA CORDIFORMIS (BITTERNUT HICKORY), 1-1/2" CALIPER, BALLED AND BURLAPPED	EACH	9	9				
A2004424	TREE, GINKGO BILOBA (GINKGO), 3" CALIPER, BALLED AND BURLAPPED	EACH	4	4				
A2004820	TREE, GLEDITSIA TRIANCANTHOS INERMIS SKY LINE (SKYLINE THORNLESS COMMON HONEYLOCUST), 2-1/2" CALIPER, BALLED AND BURLAPPED	EACH	6	6				
A2005020	TREE, GYMNOCLADUS DIOICUS (KENTUCKY COFFEETREE), 2-1/2" CALIPER, BALLED AND BURLAPPED	EACH	7	7				
A2006516	TREE, QUERCUS BICOLOR (SWAMP WHITE OAK), 2" CALIPER, BALLED AND BURLAPPED	EACH	30	30				
A2008920	TREE, ULMUS REGAL (REGAL ELM), 2-1/2" CALIPER, BALLED AND BURLAPPED	EACH	9	9				
B2000666	TREE, AMELANCHIER X GRANDIFLORA (APPLE SERVICEBERRY), 6' HEIGHT, SHRUB FORM, BALLED AND BURLAPPED	EACH	23	23				

SUMMARY OF QUANTITIES

P.L.S. NO.	SECTION	COUNTY	TOTAL SHEETS	SHEET NO.
74	7217,8,9,9-11LS-1	PEORIA	20	4
STA.		TO STA.		
P.C. AND DIST. NO.		P.C. AND PROJECT		

SUMMARY OF QUANTITIES			TOTAL QUANTITIES	CONSTRUCTION TYPE CODE				
CODE NO	ITEM	UNIT		100% STATE Y003				
B2004166	TREE, MALUS PRAIRIFIRE (PRAIRIFIRE CRABAPPLE), 6' HEIGHT, CLUMP FORM, BALLED AND BURLAPPED	EACH	1	1				
B2006068	TREE, SYRINGA PEKINENSIS (PEKIN LILAC), 7' HEIGHT, CLUMP FORM, BALLED AND BURLAPPED	EACH	27	27				
C2003224	SHRUB, HAMAMELIS VERNALIS (VERNAL WITCH HAZEL), 2' HEIGHT, BALLED AND BURLAPPED	EACH	123	123				
C2007224	SHRUB, ROSA KNOCKOUT (KNOCKOUT ROSE), 24" HEIGHT, CONTAINER	EACH	345	345				
C2016024	SHRUB, ROSA CHUCKLES (CHUCKLES POLYANTHA ROSE), 24" HEIGHT, CONTAINER	EACH	630	630				
C2C003G3	SHRUB, AMOUPHA FRUITCOSA (INDIGO BUSH), CONTAINER GROWN, 3-GALLON	EACH	62	62				
C2C00524	SHRUB, ARONIA MELANOCARPA (BLACK CHOKEBERRY), 2' HEIGHT, CONTAINER	EACH	164	164				
C2C03036	SHRUB, FORSYTHIA NORTHERN SUN (NORTHERN SUN BORDER FORSYTHIA), 3' HEIGHT, CONTAINER	EACH	145	145				
C2C03424	SHRUB, HYDRANGEA ARBORESCENS ANNABELLE (ANNABELLE SMOOTH HYDRANGEA), 2' HEIGHT CONTAINER	EACH	247	247				
C2C03936	SHRUB, ILEX VERTICILLATA WINTER RED (WINTER RED WINTERBERRY), 3' HEIGHT, CONTAINER	EACH	226	226				
C2C05724	SHRUB, RHUS AROMATICA (FRAGRANT SUMAC), 2' WIDTH, CONTAINER	EACH	1552	1552				
C2C05936	SHRUB, RHUS GLABRA (SMOOTH SUMAC), 3' HEIGHT, CONTAINER	EACH	144	144				

SUMMARY OF QUANTITIES

P.L. NO.	SECTION	COUNTY	TOTAL SHEETS	SHEET NO.
74	7217,8,9,9-11LS-1	PEORIA	20	5
STA.	TO STA.			
FED. AID PROJ. NO.	STATE	FED. AID PROJECT		

SUMMARY OF QUANTITIES			TOTAL QUANTITIES	CONSTRUCTION TYPE CODE				
CODE NO	ITEM	UNIT		100% STATE Y003				
C2C10924	SHRUB, SYRINGA MEYERI PALIBIN (DWARF KOREAN LILAC), 2' HEIGHT, CONTAINER	EACH	181	181				
D2002760	EVERGREEN, PINUS NIGRA (AUSTRALIAN PINE), 5' HEIGHT, BALLED AND BURLAPPED	EACH	21	21				
D2C00918	EVERGREEN, JUNIPERUS HORIZONTALIS HUGHES (HUGHES CREEPING JUNIPER), 18" WIDTH, CONTAINER	EACH	294	294				
E20070G1	VINE-CLEMATIS MAXIMOWICZIANA (SWEET AUTUMN CLEMATIS), 1-GALLON POT	EACH	51	51				
E20156G1	VINE-LONICERA SAMPERVIREN (HONEYSUCKLE), 1-GALLON POT	EACH	104	104				
E20200G1	VINE-PARTHENOCISSUS QUINQUEFOLIA (VIRGINIA CREEPER), 1-GALLON POT	EACH	207	207				
E20220G1	VINE-PARTHENOCISSUS TRICUSPIDATA (BOSTON IVY), 1-GALLON POT	EACH	60	60				
K0026700	TREE CARE	EACH	268	268				
K0026810	SHRUB CARE	EACH	9,210	9,210				
K0026820	VINE CARE	EACH	844	844				
K0030490	PERENNIAL PLANTS, FOR SUN, 1/2-GALLON CONTAINER	UNIT	155.75	155.75				
M2011400	NITROGEN FERTILIZER NUTRIENT	KG	14	14				
M2011500	PHOSPHORUS FERTILIZER NUTRIENT	KG	9	9				
M2011600	POTASSIUM FERTILIZER NUTRIENT	KG	6	6				
M2500750	MOWING	HA	12.9	12.9				

SUMMARY OF QUANTITIES

P.A.C. NO.	SECTION	COUNTY	TOTAL SHEETS	SHEET NO.
74	72(7,8,9,9-1)LS-1	PEORIA	20	6
STA.		TO STA.		
FED. ROAD DIST. NO.		ILLINOIS	FED. AID PROJECT	

SUMMARY OF QUANTITIES		UNIT	TOTAL QUANTITIES	CONSTRUCTION TYPE CODE			
CODE NO	ITEM			100% STATE Y003			
M2503210	INTERSEEDING, CLASS 2A	HA	2	2			
M2503312	INTERSEEDING, CLASS 4A	HA	0.33	0.33			
M2503320	INTERSEEDING, CLASS 5	HA	0.29	0.29			
M2510115	MULCH, METHOD 2	HA	2	2			
M2520200	SUPPLEMENTAL WATERING	UNIT	606	606			
M2800400	PERIMETER EROSION BARRIER	METER	487	487			
MX032435	GRAVEL MULCH	M TON	35	35			
MX032675	PERENNIAL PLANT CARE	SQ M	11575	11575			
MX032680	WEED CONTROL, PRE-EMERGENT GRANULAR HERBICIDE	KG	44	44			
X0325777	BACKFLOW PREVENTER AND ENCLOSURE	EACH	2	2			
XX003027	JUNIPERUS CHINENSIS "KALLAYS COMPACTA"	EACH	282	282			
XX005171	PEROVSKIA ATRIPLICIFOLIA 'LONGIN' 1(GAL)	EACH	210	210			

SCHEDULE OF QUANTITIES:

F.A.I. RTE.	SECTION	COUNTY	TOTAL SHEETS	SHEET NO.
74	72(7,8,9,9-1)LS-1	PEORIA	20	7
STA.	TO STA.			
FED. ROAD DIST. NO.	ILLINOIS	FED. AID PROJECT		

KEY	ITEM	COMMON NAME	SIZE	UNIT	TOTAL	LOCATION - LAYOUT/SHEET NUMBER						
						L1	L2	L3	L4	L5	L6	
	DECIDUOUS TREES						14	15	16	17	18	19
CC	CARYA CORDIFORMIS	BITTERNUT HICKORY	1-1/2" CALIPER, BALLED AND BURLAPPED	EACH	9	0	0	0	9	0	0	
GD	GYMNOCLADUS DIOICUS	KENTUCKY COFFEETREE	2-1/2" CALIPER, BALLED AND BURLAPPED	EACH	7	0	0	0	7	0	0	
QA	QUERCUS BICOLOR	SWAMP WHITE OAK	2" CALIPER, BALLED AND BURLAPPED	EACH	30	0	0	3	0	0	27	
AN	ACER NIGRUM	BLACK MAPLE	2-1/2" CALIPER, BALLED AND BURLAPPED	EACH	1	0	0	0	0	1	0	
GB	GINKGO BILOBA	GINKGO	3" CALIPER, BALLED AND BURLAPPED	EACH	4	0	0	0	0	0	4	
GT	GLEDITSIA TRIACANTHOS INERMIS SKYLINE	SKYLINE THORNLESS HONEYLOCUST	2-1/2" CALIPER, BALLED AND BURLAPPED	EACH	6	0	0	1	0	5	0	
UR	ULMUS REGAL	REGAL ELM	2-1/2" CALIPER, BALLED AND BURLAPPED	EACH	9	0	0	0	0	0	9	
	ORNAMENTAL TREES											
AC	AMELANCHIER X GRANDIFLORA	APPLE SERVICEBERRY	6' HEIGHT, SHRUB FORM, BALLED AND BURLAPPED	EACH	23	0	1	3	6	1	12	
SP	SYRINGA PEKINENSIS	PEKING LILAC	7' HEIGHT, CLUMP FORM, BALLED AND BURLAPPED	EACH	27	0	0	0	7	0	20	
MP	MALUS PRAIRIFIRE	PRAIRIFIRE CRABAPPLE	6' HEIGHT, CLUMP FORM, BALLED AND BURLAPPED	EACH	1	0	0	0	1	0	0	
	EVERGREEN TREES											
PN	PINUS NIGRA	AUSTRIAN PINE	5' BALLED AND BURLAPPED	EACH	21	0	6	3	6	0	6	
	SHRUBS											
AF	AMOPHA FRUITCOSA	INDIGO BUSH	CONTAINER GROWN, 3-GALLON	EACH	62	0	62	0	0	0	0	
FS	FORSYTHIA NORTHERN SUN	NORTHERN SUN BORDER FORSYTHIA	3' HEIGHT, CONTAINER	EACH	145	0	45	0	0	40	60	
HV	HAMAMELIS VERNALIS	VERNAL WITCH HAZEL	2' HEIGHT, BALLED AND BURLAPPED	EACH	123	0	103	0	20	0	0	
HA	HYDRANGEA ARBORESCENS ANNABELLE	ANNABELLE SMOOTH HYDRANGEA	2' HEIGHT CONTAINER	EACH	247	0	0	230	17	0	0	
PA	PEROVSKIA ATRIPLICIFOLIA	RUSSIAN SAGE	PEROVSKIA ATRIPLICIFOLIA	EACH	210	0	0	210	0	0	0	
RA	RHUS AROMATICA	FRAGRANT SUMAC	2' WIDTH, CONTAINER	EACH	1552	66	130	0	577	102	674	
RG	RHUS GLABRA	SMOOTH SUMAC	3' HEIGHT, CONTAINER	EACH	144	68	25	40	0	11	0	
SPA	SYRINGA MEYERI PALIBIN (DWARF KOREAN LILAC)	DWARF KOREAN LILAC	2' HEIGHT, CONTAINER	EACH	181	0	0	81	0	0	100	
RS	ARONIA MELANOCARPA	BLACK CHOKEBERRY	2' HEIGHT, CONTAINER	EACH	164	120	0	20	24	0	0	
RH	ILEX VERTICILLATA	WINTER RED	3' HEIGHT, CONTAINER	EACH	226	0	0	0	0	64	162	
RR	ROSA KNOCKOUT	KNOCKOUT ROSE	24" HEIGHT, CONTAINER	EACH	345	0	0	230	115	0	0	
RRC	ROSA X CHUCKLES	CHUCKLES SHRUB ROSE	24" HEIGHT, CONTAINER	EACH	630	0	0	0	0	0	630	
	EVERGREEN SHRUBS											
JH	JUNIPERUS HORIZONTALIS HUGHES	HUGHES CREEPING JUNIPER	18" WIDTH, CONTAINER	EACH	294	0	0	0	97	173	24	
JC	JUNIPERUS CHINENSIS	KALLAYS COMPACTA	18" WIDTH, CONTAINER	EACH	282	0	0	130	40	30	82	
	VINES											
PQ	PARTHENOCISSUS QUINQUEFOLIA	VIRGINIA CREEPER	1-GALLON POT	EACH	207	52	65	0	32	34	24	
JT	PARTHENOCISSUS TRICUSPIDATA	BOSTON IVY	1-GALLON POT	EACH	60	48	0	0	0	12	0	
CT	CLEMATIS MAXIMOWICZIANA	SWEET AUTUMN CLEMATIS	1-GALLON POT	EACH	51	14	9	0	28	0	0	
LS	LONIGERA SEMPERVIRENS	HONEYSUCKLE	1-GALLON POT	EACH	104	8	26	0	0	70	0	
	PERENNIALS AND GROUNDCOVERS											
	PERENNIAL PLANTS, FOR SUN	PERENNIAL PLANTS, FOR SUN	1/2-GALLON POT, 12" O.C.	UNIT	155.75							
	INTERSEEDING, CLASS 4A			HA	0.33	0.00	0.13	0.07	0.00	0.00	0.13	
	INTERSEEDING, CLASS 5			HA	0.29	0.00	0.13	0.07	0.00	0.00	0.09	
	INTERSEEDING, CLASS 2A	(SEE NOTE 1)		HA	2.0	0	0	0	0	0	0	
	MOWING	11 APPLICATIONS		HA	12.9	0	2.07	2.35	2.22	1.30	4.93	
	MULCH, METHOD 2	(SEE NOTE 1)		HA	2.0	0	0	0	0	0	0	
	BACKFLOW PREVENTER AND ENCLOSURE			EACH	2	0	0	1	0	0	1	

LEGEND:

- L1 LANDSCAPE LAYOUT-1
- L2 LANDSCAPE LAYOUT-2
- L3 LANDSCAPE LAYOUT-3
- L4 LANDSCAPE LAYOUT-4
- L5 LANDSCAPE LAYOUT-5
- L6 LANDSCAPE LAYOUT-6

NOTE 1: INTERSEEDING, CLASS 2A AND MULCH, METHOD 2 LOCATIONS WILL BE SELECTED BY THE RESIDENT ENGINEER BASED ON CONDITIONS OF EXISTING TURF.

ILLINOIS DEPARTMENT OF TRANSPORTATION
 F.A.I. ROUTE 74 (I-74)
 SCHEDULE OF
 LANDSCAPE ITEMS
 DRAWN BY: K.K.K.
 CHECKED BY: R.J.D.
 DATE:

TEMPORARY EROSION CONTROL NOTES

F.A.I. RTE.	SECTION	COUNTY	TOTAL SHEETS	SHEET NO.
74	72(7,8,9,9-1)LS-1	PEORIA	20	8
STA.		TO STA.		
FED. ROAD DIST. NO.		ILLINOIS	FED. AID PROJECT	

- DURING LANDSCAPE CONSTRUCTION, AREAS OUTSIDE THE CONSTRUCTION SLOPE LIMITS, SHALL BE PROTECTED FROM DAMAGING EFFECTS OF CONSTRUCTION. THE CONTRACTOR SHALL NOT USE THIS AREA FOR STAGING, (EXCEPT AS DESIGNATED ON THE PLANS OR DIRECTED BY THE ENGINEER), PARKING OF VEHICLES OR CONSTRUCTION EQUIPMENT, STORAGE OF MATERIALS, OR OTHER CONSTRUCTION RELATED ACTIVITIES.
- WITHIN THE CONSTRUCTION ZONE, CRITICAL AREAS WHICH HAVE HIGH FLOWS OF WATER AS DETERMINED BY THE ENGINEER SHALL REMAIN UNDISTURBED UNTIL FULL SCALE CONSTRUCTION IS UNDERWAY TO PREVENT UNNECESSARY SOIL EROSION.
- EARTH STOCKPILES SHALL BE TEMPORARILY SEEDED IF THEY ARE TO REMAIN UNUSED FOR MORE THAN FOURTEEN DAYS.
- CONSTRUCTION EQUIPMENT SHALL BE STORED AND FUELED ONLY AT DESIGNATED LOCATIONS. ALL NECESSARY MEASURES SHALL BE TAKEN TO CONTAIN ANY FUEL OR POLLUTION RUN-OFF IN COMPLIANCE WITH EPA WATER QUALITY REGULATIONS. LEAKING EQUIPMENT OR SUPPLIES SHALL BE IMMEDIATELY REPAIRED OR REMOVED FROM THE SITE.
- THE RESIDENT ENGINEER SHALL INSPECT THE PROJECT ON A REGULAR BASIS TO DETERMINE THAT EROSION CONTROL EFFORTS ARE IN PLACE AND EFFECTIVE AND IF OTHER EROSION CONTROL WORK IS NECESSARY.
- SEDIMENT COLLECTED DURING CONSTRUCTION BY THE VARIOUS TEMPORARY EROSION CONTROL SYSTEM SHALL BE DISPOSED OFF FROM THE SITE ON A REGULAR BASIS AS DIRECTED BY THE ENGINEER. PERIMETER BARRIER SHALL HAVE SEDIMENT REMOVED WHEN IT REACHES 50% OF THE HEIGHT OF THE CONTROL DEVICE. THE COST OF MAINTAINING AND CLEANING THE EROSION AND SEDIMENT CONTROL ITEMS SHALL BE INCLUDED IN THE RESPECTIVE PAY ITEMS. NO ADDITIONAL COMPENSATION WILL BE ALLOWED.
- TEMPORARY EROSION CONTROL SYSTEMS SHALL BE REMOVED AS DIRECTED BY THE ENGINEER AFTER EVERY USE IF NO LONGER NEEDED OR NO LONGER FUNCTIONING. THE COST OF THIS REMOVAL SHALL BE INCLUDED IN THE UNIT BID PRICE FOR THE TEMPORARY EROSION CONTROL SYSTEM. NO ADDITIONAL COMPENSATION WILL BE ALLOWED.
- PLACEMENT AND MAINTENANCE OF TEMPORARY EROSION CONTROL SYSTEMS WILL BE UTILIZED USING PERIMETER EROSION BARRIER THROUGHOUT THE LANDSCAPE WORK ZONE AS SOON AS POSSIBLE TO STABILIZE EXPOSED SOILS, AS APPROVED, BY THE ENGINEER.
- EROSION CONTROL DEVICES SHALL BE IN PLACE AND APPROVED BY THE ENGINEER AS TO PROPER PLACEMENT AND INSTALLATION PRIOR TO BEGINNING OTHER WORK AT EACH SITE.
- THIS WORK SHALL BE COMPLETED IN ACCORDANCE WITH SECTION 280, TEMPORARY EROSION CONTROL, OF THE STANDARD SPECIFICATIONS.
- THE CONTRACTOR SHALL PERFORM ALL WORK AS DIRECTED BY THE ENGINEER AND AS SHOWN IN STANDARDS 280001.
- TEMPORARY EROSION CONTROL SYSTEMS ARE NOTED IN THE TEMPORARY EROSION CONTROL SCHEDULES. THE SCHEDULE MAY INCLUDE THE FOLLOWING:
 TEMPORARY DITCH CHECKS
 INLET AND PIPE PROTECTION
 PERIMETER EROSION BARRIER

PRIOR TO CONSTRUCTION:

- PRIOR TO PERFORMING LANDSCAPE ACTIVITIES RESULTING IN LAND DISTURBANCE, THE CONTRACTOR SHALL INSTALL ITEMS INTENDED TO PREVENT SEDIMENT FROM LEAVING THE CONSTRUCTION SITE. THE ITEMS MAY INCLUDE THE FOLLOWING TEMPORARY EROSION CONTROL SYSTEMS:
 TEMPORARY DITCH CHECKS
 INLET AND PIPE PROTECTION
 PERIMETER EROSION BARRIER

DURING CONSTRUCTION:

- DURING CONSTRUCTION THE CONTRACTOR SHALL:
- CLEAN UP AND GRADE THE WORK AREA TO ELIMINATE CONCENTRATION OF RUNOFF.
- INSTALL TEMPORARY DITCH CHECKS AT LOCATIONS SPECIFIED IN THE SCHEDULES OR AS DIRECTED BY THE RESIDENT ENGINEER.
- INSTALL INLET PROTECTION AS SPECIFIED IN THE SCHEDULES OR AS DIRECTED BY THE RESIDENT ENGINEER FOR STORM SEWERS OR CULVERTS AS THEY ARE INSTALLED AND AS WORK PROCEEDS.
- COVER THE OPEN ENDS OF PIPES IN TRENCHES AT THE CLOSE OF EACH WORKING DAY.
- MAINTAIN OR REPLACE (IF SPECIFIED BY THE RESIDENT ENGINEER) EROSION CONTROL ITEMS.

PERIMETER EROSION BARRIER		
LOCATION	PERIMETER EROSION BARRIER	METER
E.B. I-74		
RT 28.28 m STA 149+475.00 TO RT 15.74 m STA 149+775.00		300
RT 20.81 m STA 149+925.00 TO RT 23.93 m STA 150+000.00		75
	SUBTOTAL	375
RAMP F-3		
LT 5.67 m STA 10+025.00 TO LT 4.9 m STA 10+137.31		112
	SUBTOTAL	112
	GRAND TOTAL	487

INLET AND PIPE PROTECTION			
LOCATION			EACH
E.B. I-74			
STA. 149+089.001	14.466 m	RT	1
STA. 148+148.787	19.670 m	RT	1
STA. 148+218.682	23.481 m	RT	1
STA. 148+249.210	29.738 m	RT	1
STA. 148+496.009	19.147 m	RT	1
STA. 148+575.282	23.260 m	RT	1
STA. 148+932.995	14.896 m	RT	1
STA. 150+166.430	30.240 m	RT.	1
	SUBTOTAL		8
RAMP F-1			
STA. 10+228.929	8.795 m	RT	1
STA. 10+294.964	9.792 m	LT	1
STA. 10+321.505		LT	1
STA. 10+440.223	8.814 m	LT	1
	SUBTOTAL		4
RAMP G-1			
STA. 10+357.083	7.900 m	LT.	1
STA. 10+387.625	11.199 m	LT.	1
STA. 10+423.987	7.899 m	LT.	1
STA. 10+436.906	10.434 m	LT.	1
	SUBTOTAL		4
	GRAND TOTAL		16

TEMPORARY DITCH CHECKS				
LOCATION				EACH
E.B. I-74				
STA. 150+110.423	14.42 m	RT.		1
STA. 150+119.262	16.11 m	RT.		1
STA. 150+128.101	17.81 m	RT.		1
STA. 150+136.731	20.36 m	RT.		1
STA. 150+145.361	22.91 m	RT.		1
STA. 150+153.843	25.92 m	RT.		1
STA. 150+162.325	28.93 m	RT.		1
STA. 150+168.225	27.30 m	RT.		1
STA. 150+169.927	24.78 m	RT.		1
STA. 150+171.616	22.26 m	RT.		1
STA. 150+174.306	20.76 m	RT.		1
STA. 150+180.863	18.45 m	RT.		1
STA. 150+195.893	15.14 m	RT.		1
	SUBTOTAL			13
RAMP G-1				
STA. 10+344.032	20.90 m	LT.		1
STA. 10+350.319	17.80 m	LT.		1
STA. 10+355.966	14.87 m	LT.		1
STA. 10+359.301	10.10 m	LT.		1
STA. 10+368.384	10.90 m	LT.		1
STA. 10+457.855	10.57 m	LT.		1
STA. 10+472.275	17.16 m	LT.		1
	SUBTOTAL			7
	GRAND TOTAL			20

ILLINOIS DEPARTMENT OF TRANSPORTATION
F.A.I. ROUTE 74 (I-74)

TEMPORARY EROSION
CONTROL NOTES AND SCHEDULES

DATE: DRAWN BY: K.K.K.
CHECKED BY: R.J.D.

F.A.I. RTE.	SECTION	COUNTY	TOTAL SHEETS	SHEET NO.
74	72(7,8,9,9-1)LS-1	PEORIA	20	9
STA.		TO STA.		
FED. ROAD DIST. NO.		ILLINOIS	FED. AID PROJECT	

GRAVEL MULCH		
Location	Depth	M. Ton
Ramp E-1		
Lt. Sta. 20+475 to 20+570	150 mm	35

ENGINEER'S FIELD OFFICE, TYPE A	
Jobsite	10 CAL MO

MOBILIZATION	
Jobsite	1 Lump Sum

TRAFFIC CONTROL AND PROTECTION	
Jobsite	1 Lump Sum

SUPPLEMENTAL WATERING				
Location	No. of Plants	Rate liters/plant	No. of Waterings	Units
Trees	134	38	5	25.46
Shrubs	4,605	11	5	253.275
Vines	422	11	5	23.21
Perennials	1,447 SQM	15 L/SQM	14	303.87
Total				606

CARE OF PLANT MATERIALS			
Location	No. of Plants	No. of Care Cycles	Each
Tree Care	134	2	268
Shrub Care	4,605	2	9,210
Vine Care	422	2	844
Perennial Plant Care	1,447	8	11,575 SQM

Note: Perennial Plant Care will be measured by SQM.

WEED CONTROL, PRE-EMERGENT GRANULAR HERBICIDE				
Location	Appl. Rate (kg/SQM)	Area (SQ M)	No. of Appl.	Kilograms
Perennial Plant Beds	0.01	1,447	3	44

FERTILIZER NUTRIENTS				
Location	Appl. Rate (kg/SQM)	Area (SQ M)	No. of Appl.	Kilograms
Perennial Plant Beds				
Nitrogen Fert. Nutr.	0.01	1,447	1	14
Phosphorus Fert. Nutr.	0.006	1,447	1	9
Potassium Fert. Nutr.	0.004	1,447	1	6

	Totals By Layout Sheet		Totals by Plant Name
	Sheet 3	Sheet 6	
Forbs			
Aster Laevis -Smooth Aster	0	700	700
Aster Novae angliae-New England Aster	670	600	1,270
Baptisia Leucantha - White Indigo	0	350	350
Echinacea Purpurea - Purple Coneflower	770	1,000	1,770
Helianthus Strumosus- Woodland Sunflower	700	900	1,600
Monarda Fistulosa- Wild Bergamont	750	350	1,100
Physostegia Virginiana-Obedient Plant	0	330	330
Rudbeckia Goldstrum- Goldstrum Brown Eyed Susan	0	600	600
Silphium Integrefolium- Rosin Weed	770	500	1,270
Silphium Laciniatum-Compass Plant	700	0	700
Silphium Terebinthinaceum- Prairie Dock	0	1,500	1,500
Solidago Speciosa - Showy Goldenrod	0	380	380
Vernonia Fasticulata- Ironweed	0	485	485
Veronicastrum Virginicum-Culvers Root	0	480	480
Grasses			
Andropogon Scoparius- Little Bluestem	540	1,030	1,570
Sorghastrum Nutans-Indiangrass	260	0	260
Sporobulus Heterolepsis-Dropseed	1,210	0	1,210
Sub Totals	6,370	9,205	
Grand Total	15,575 = 155.75 Units		

NOTE: PERENNIAL PLANTS TO BE PLANTED IN LARGE GROUPINGS. LAYOUT TO BE DETERMINED BY LANDSCAPE ARCHITECT PRIOR TO PLANTING.

ILLINOIS DEPARTMENT OF TRANSPORTATION
 F.A.I. ROUTE 74 (I-74)
 SCHEDULE OF QUANTITIES
 DRAWN BY: K.K.K.
 CHECKED BY: R.J.D.
 DATE:

F.A.I. RTE.	SECTION	COUNTY	TOTAL SHEETS	SHEET NO.
74	72(7,8,9,9-1)LS	PEORIA	19	10
STA.	TO STA.			
FED. ROAD DIST. NO.	ILLINOIS	FED. AID PROJECT		

CALENDAR OF CONSTRUCTION:

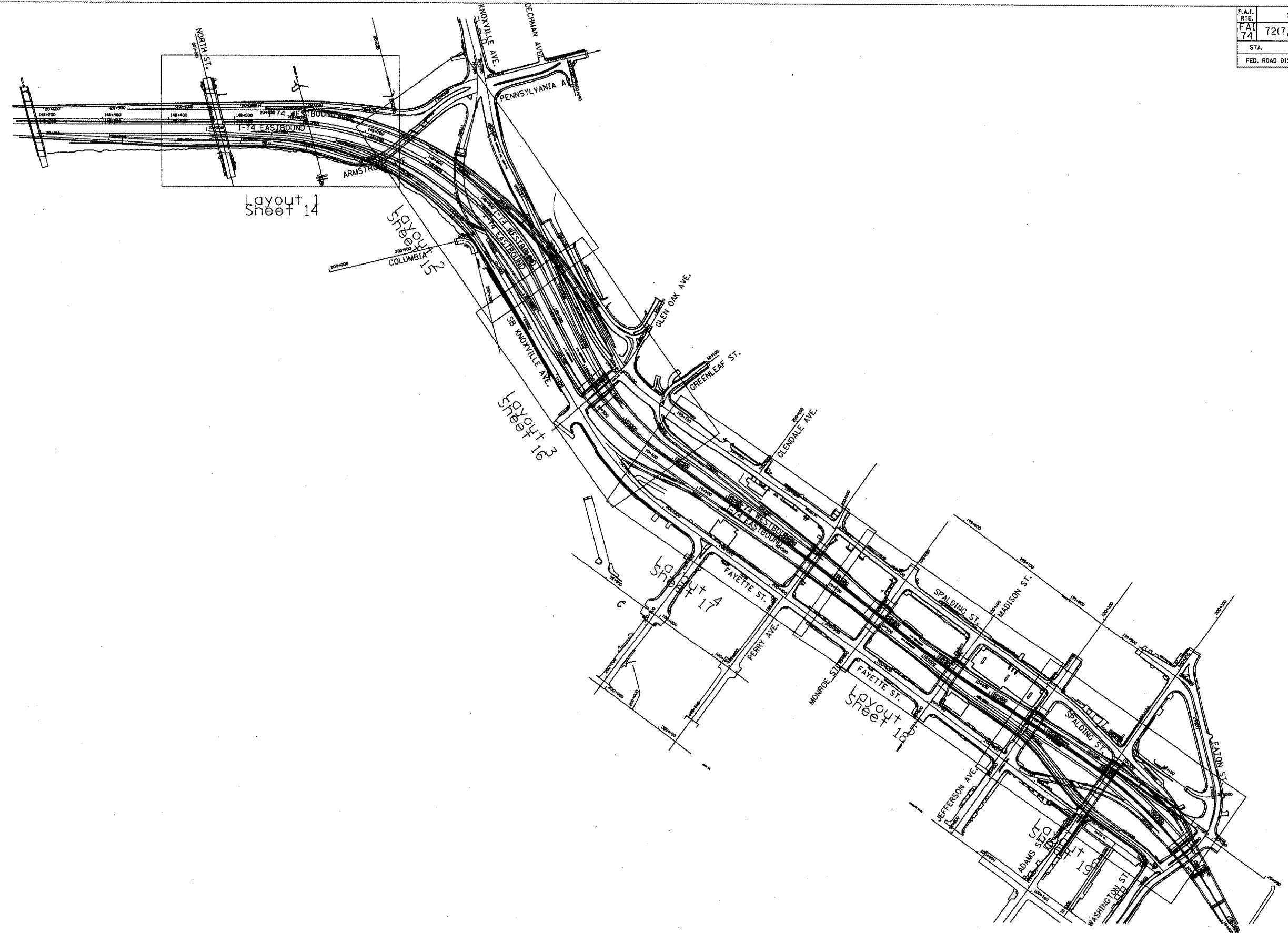
	YEAR	WORK DATES		CONSTRUCTION WORK	ESTABLISHMENT WORK	
		FROM	TO			
Phase I	2008	15-Apr	1-May		Mow turf areas to a turf height of 3 inches	
	2008	1-Apr	15-June	Class 2A Intarseeding		
	2008	Thawed soil	30-Apr	Installation of all evergreens		
	2008	Thawed soil	31-May	Installation of all woody plants		
	2008	1-May	30-May	Period of establishment plant care required for woody plants (weeding, watering or other work) which is necessary to maintain health and satisfactory appearance of the planting is included in the cost of the contract as per Article 253.14 and 253.15.		
	2008	1-May	15-June	Finish planting of Perennial Plants. See Article 254.09 for period of establishment.		
	2008	15-May	30-June	Class 4A and 5 Seeding		
			1-June	Certification to the bureau of operations that all woody plants have been installed and are in a live healthy condition and eligible for a Sept. 2008 period of establishment inspection.		
			1-Jun	15-Jun	Perennial plant period of establishment inspection	Mow turf areas to a turf height of 3 inches
			1-Jun	30-Jun	Period of establishment plant care required for woody plants (weeding, watering or other work) which is necessary to maintain healthy and satisfactory appearance of the planting is included in the cost of the contract as per sect. 253.14 & 253.15.	
Phase II	2008	1-Jul	15-Jul		Mow turf areas to a turf height of 3 inches	
		1-Jul	31-Jul	Period of establishment plant care required for woody plants (weeding, watering or other work) which is necessary to maintain healthy and satisfactory appearance of the planting is included in the cost of the contract.		
		1-July	30-Sept		Perennial plant care every 30 days (3 cycles)	
		1-July	30-Oct		Perennial plant supplemental watering every 30 days (4 cycles)	
		1-Aug	15-Aug		Mow turf areas to a turf height of 3 inches	
		1-Aug	31-Aug	Period of establishment plant care required for woody plants (weeding, watering or other work) which is necessary to maintain health and satisfactory appearance of the planting is included in the cost of the contract.		
		1-Sep	30-Sep	Period of establishment plant care required for woody plants (weeding, watering or other work) which is necessary to maintain health and satisfactory appearance of the planting is included in the cost of the contract.		
		1-Sept	30-Sep	Period of establishment inspection will be performed by IDOT.		
		1-Oct	15-Oct		Mow turf areas to a turf height of 3 inches	
Phase III	2009	Thawed soil	15-May	Installation of all required replacement woody plants, and all required clean up of Woody plants shall be completed by this date.		
		1-May	15-May		Mow turf areas to a turf height of 3 inches	
		1-May	30-Sep		Perennial plant care every 30 days (5 cycles)	
		1-May	30-May		Supplemental watering of woody plants and perennial plants unless deleted by the Engineer.	
		1-Jun	15-Jun		Mow turf areas to a turf height of 3 inches	
		1-Jun	30-Jun		Supplemental watering of woody plants and perennial plants unless deleted by the Engineer.	
		1-Jul	15-Jul		Mow turf areas to a turf height of 3 inches	
	2009		17-Jul		Inspection date for all woody plant care.	
		1-Jun	30-Jun		(Woody plant care work cycle must be complete and acceptable on the inspection date.)	
		1-Jul	31-Jul		Supplemental watering of woody plants and perennial plants unless deleted by the Engineer.	
Phase IV		1-Aug	15-Aug		Mow turf areas to a turf height of 3 inches	
		1-Aug	31-Aug		Supplemental watering of woody plants and perennial plants unless deleted by the Engineer.	
		1-Sep	15-Sep		Mow turf areas to a turf height of 3 inches	
			18-Sep		(Woody plant care work cycle must be complete and acceptable on the inspection date.)	
		1-Sep	30-Sep		Supplemental watering of woody plants and perennial plants unless deleted by the Engineer.	
		1-Oct	15-Oct		Mow turf areas to a turf height of 3 inches	

ILLINOIS DEPARTMENT OF TRANSPORTATION
F.A.I. ROUTE 74 (I-74)

CALENDAR OF CONSTRUCTION

DATE: DRAWN BY: K.K.K.
CHECKED BY: R.J.D.

F.A.I. RTE.	SECTION	COUNTY	TOTAL SHEETS	SHEET NO.
F.A.I. 74	72(7,8,9,9-1)LS	PEORIA	19	11
STA.		TO STA.		
FED. ROAD DIST. NO.		ILLINOIS	FED. AID PROJECT	



ILLINOIS DEPARTMENT OF TRANSPORTATION
F.A.I. ROUTE 74 (I-74)

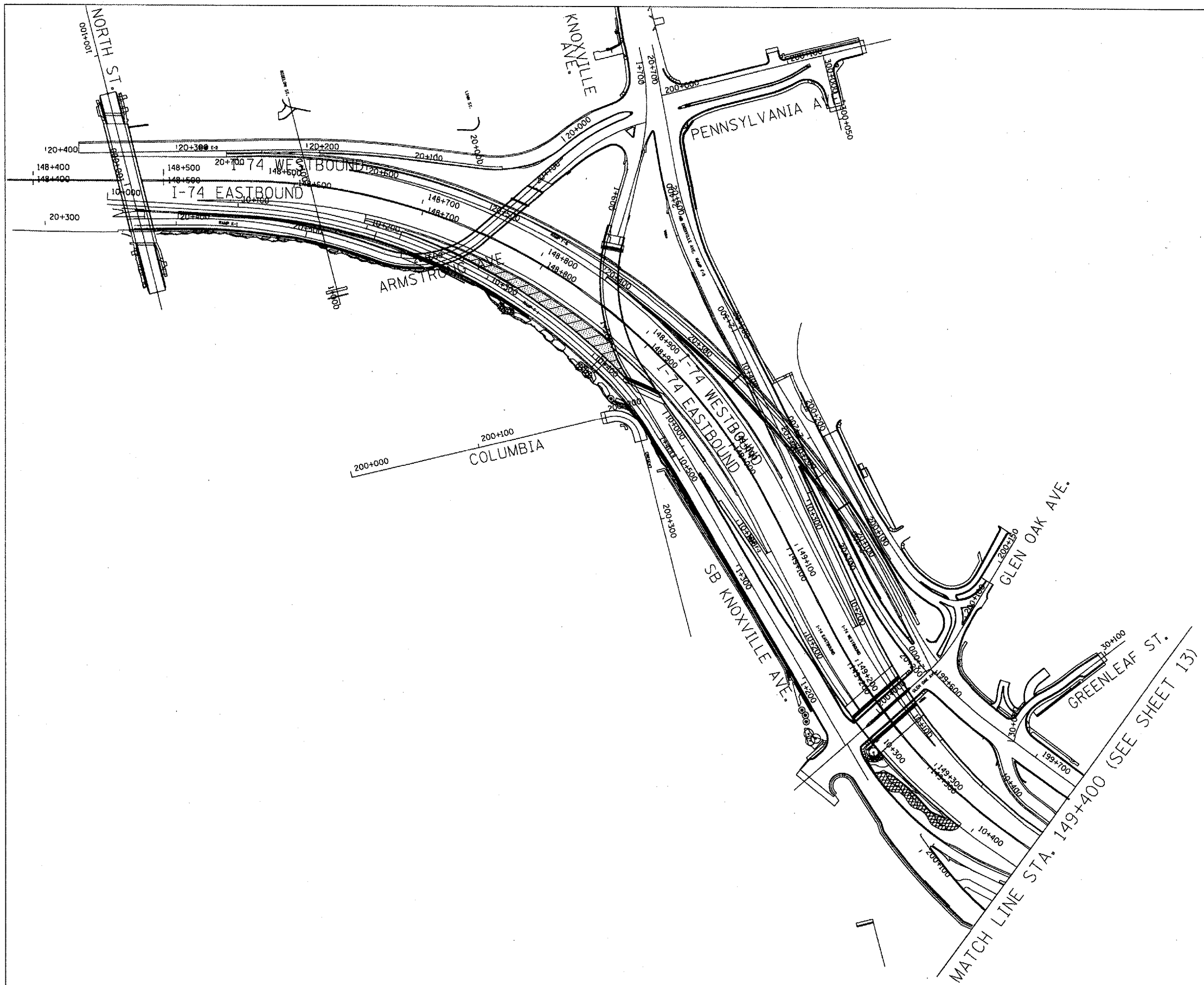
OVERALL SCHEMATIC PLAN

SCALE = 1:30000
DATE:

DRAWN BY: K.K.K.
CHECKED BY: R.J.D.

CONTRACT NO. 68764

F.A.I. RTE.	SECTION	COUNTY	TOTAL SHEETS	SHEET NO.
74	72(7,8,9,9-1)LS	PEORIA	19	12
STA.		TO STA.		
FED. ROAD DIST. NO.		ILLINOIS	FED. AID PROJECT	



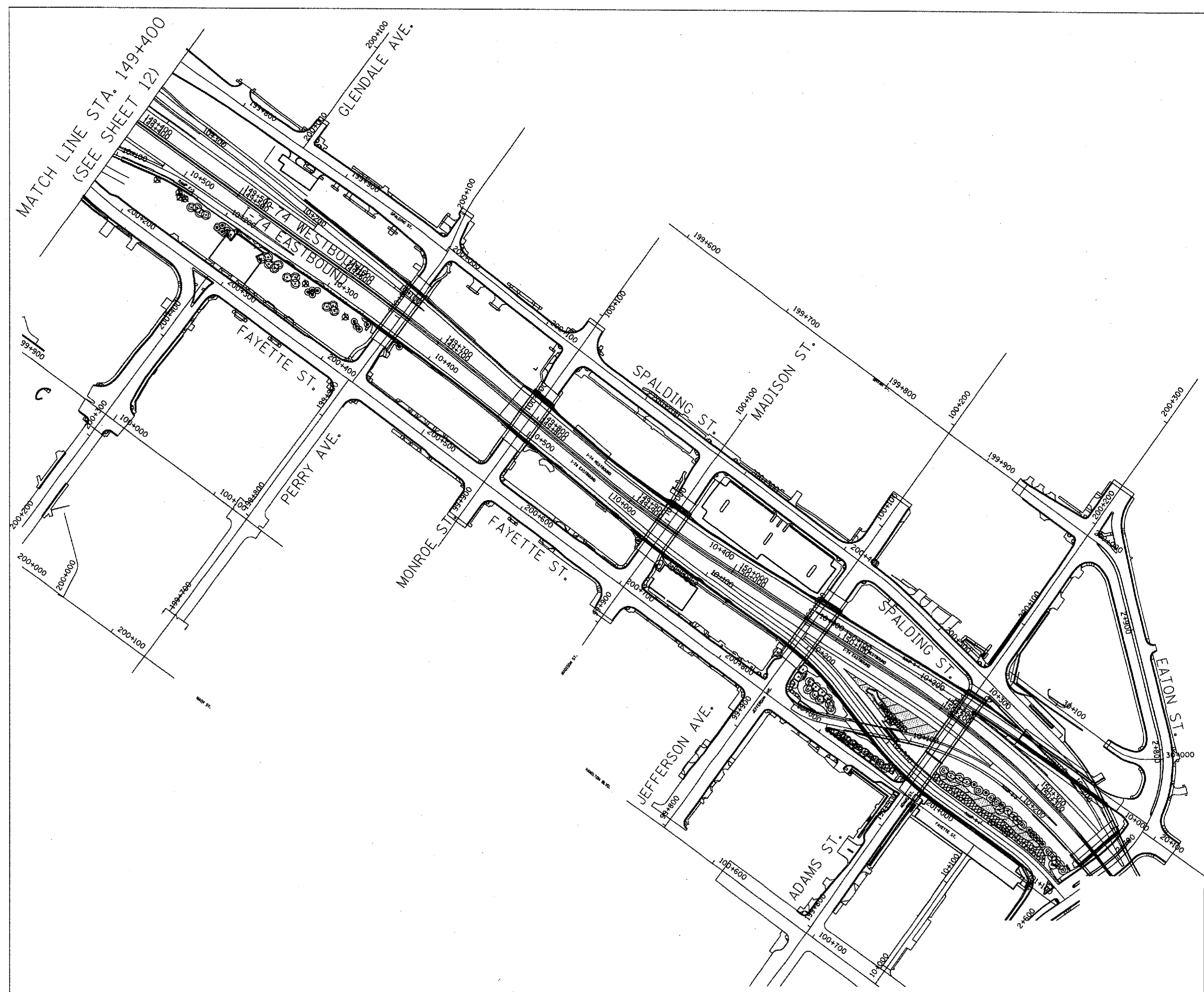
ILLINOIS DEPARTMENT OF TRANSPORTATION
 F.A.I. ROUTE 74 (I-74)

LANDSCAPE LOCATION PLAN 1

SCALE= 1:1500M DRAWN BY: K.K.K.
 DATE: CHECKED BY: R.J.D.

CONTRACT NO. 68764

F.A.I. RTE.	SECTION	COUNTY	TOTAL SHEETS	SHEET NO.
F 74	72(7,8,9,9-1)LS	PEORIA	19	13
STA.		TO STA.		
FED. ROAD DIST. NO.	ILLINOIS	FED. AID PROJECT		



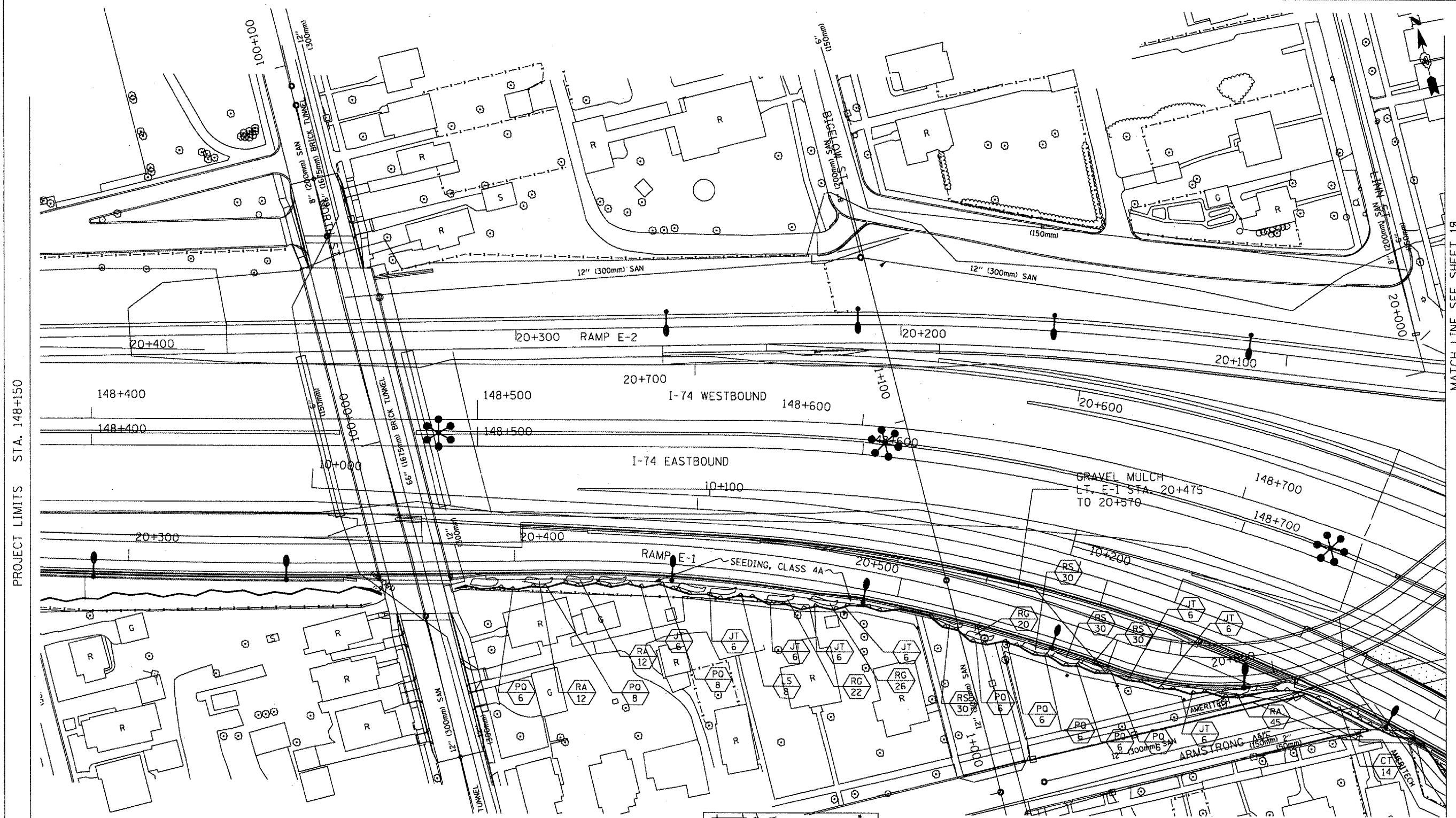
ILLINOIS DEPARTMENT OF TRANSPORTATION
 F.A.I. ROUTE 74 (I-74)

LANDSCAPE LOCATION PLAN 2

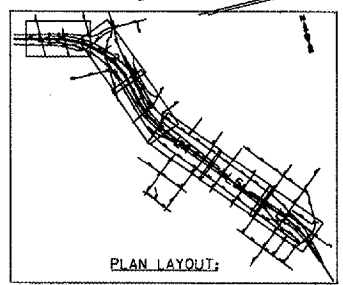
SCALE= 1:1500M
 DATE:

DRAWN BY: K.K.K.
 CHECKED BY: R.J.D.

F.A.I. RTE.	SECTION	COUNTY	TOTAL SHEETS	SHEET NO.
74	72(7,8,9,9-1)LS	PEORIA	19	14
STA.		TO STA.		
FED. ROAD DIST. NO.		ILLINOIS	FED. AID PROJECT	



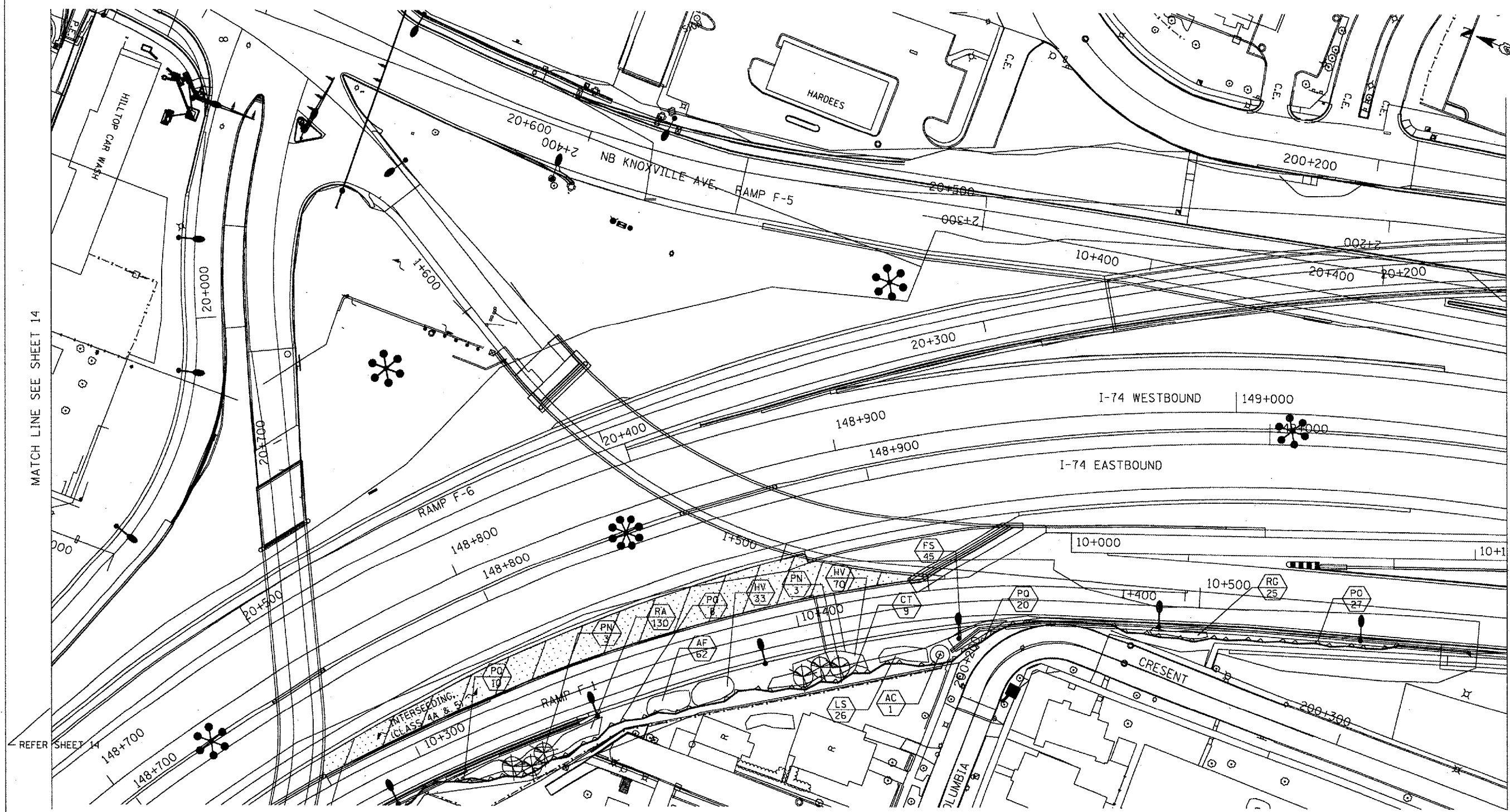
- LEGEND**
- VINES ON SOUND/RETAINING WALL
 - SHRUBS
 - PROPOSED EVERGREEN TREE
 - PROPOSED SMALL ORNAMENTAL TREE
 - PROPOSED SHADE TREE (5' DIA. MULCH SAUCER-TYP. -FOR ALL TREES & SHRUBS)
 - INTERSEEDING, CLASS 4A AND/OR 5
 - PERENNIAL PLANTS, FOR SUN
 - PPFS PROPOSED PERENNIAL PLANTS, FOR SUN (REFER TO SHEET NO. 9)
 - PROPOSED PLANT KEY (REFER TO SHEET NO. 7)
 - PROPOSED QUANTITY OF SPECIFIED PLANT
 - PROPOSED IRRIGATION CONNECTION



ILLINOIS DEPARTMENT OF TRANSPORTATION
 F.A.I. ROUTE 74 (I-74)
LANDSCAPE - LAYOUT 1
 SCALE = 1:500 M
 DATE: _____
 DRAWN BY: K.K.K.
 CHECKED BY: R.J.D.

MATCH LINE SEE SHEET 18

F.A.I. RTE.	SECTION	COUNTY	TOTAL SHEETS	SHEET NO.
74	72(7,8,9,9-1)LS	PEORIA	19	15
STA.	TO STA.			
FED. ROAD DIST. NO.	ILLINOIS	FED. AID PROJECT		

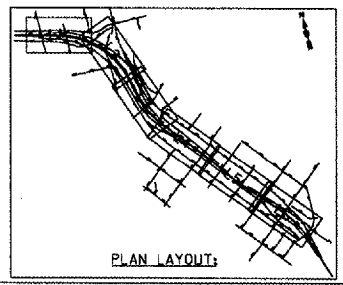


MATCH LINE SEE SHEET 14

MATCH LINE SEE SHEET 16

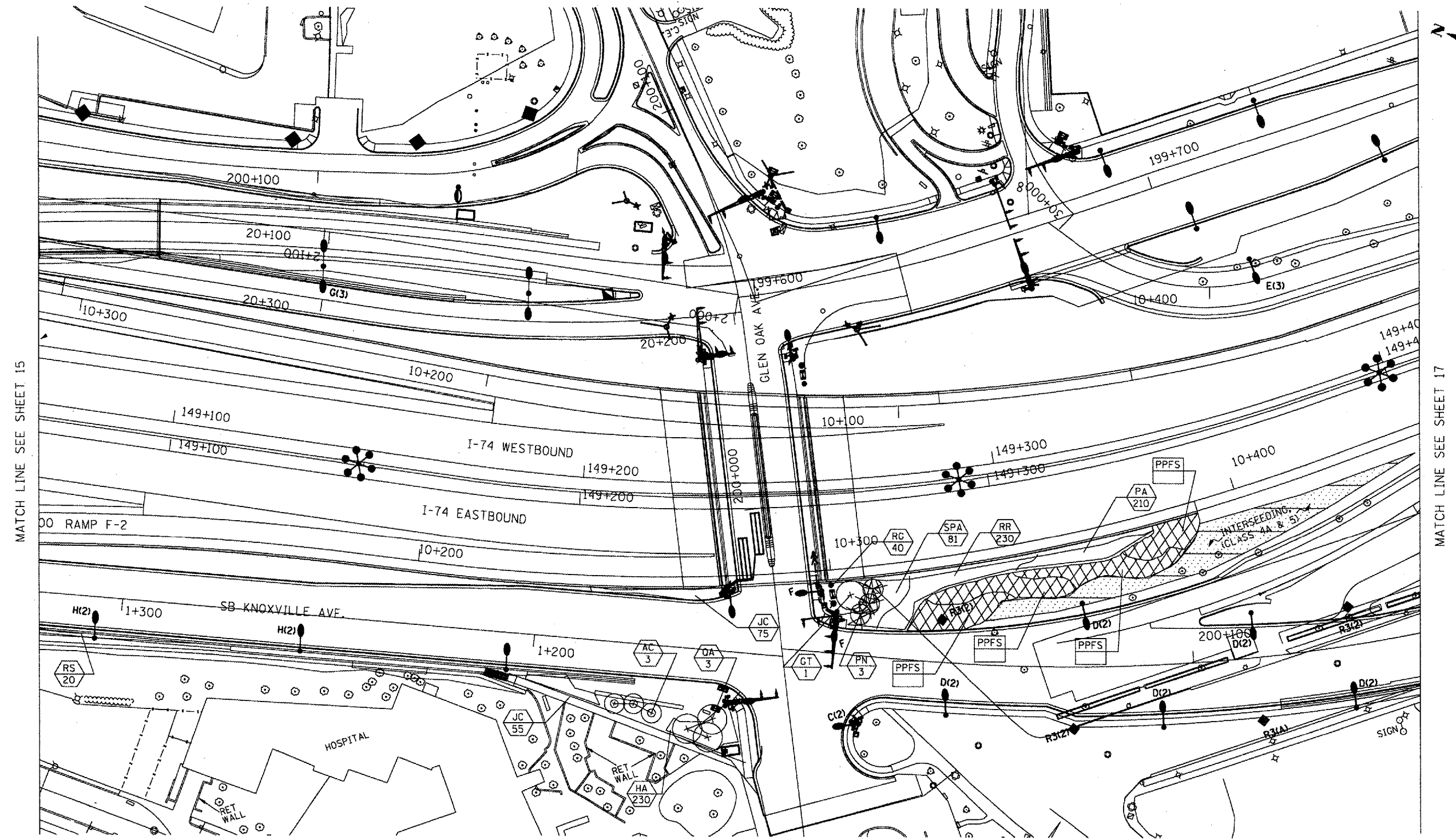
LEGEND

- VINES ON SOUND/RETAINING WALL
- SHRUBS
- PROPOSED EVERGREEN TREE
- PROPOSED SMALL ORNAMENTAL TREE
- PROPOSED SHADE TREE (5' DIA. MULCH SAUCER-TYP. -FOR ALL TREES & SHRUBS)
- INTERSEEDING, CLASS 4A AND/OR 5
- PERENNIAL PLANTS, FOR SUN
- PPFs PROPOSED PERENNIAL PLANTS, FOR SUN (REFER TO SHEET NO. 9)
- PROPOSED PLANT KEY (REFER TO SHEET NO. 7) PROPOSED QUANTITY OF SPECIFIED PLANT
- PROPOSED IRRIGATION CONNECTION



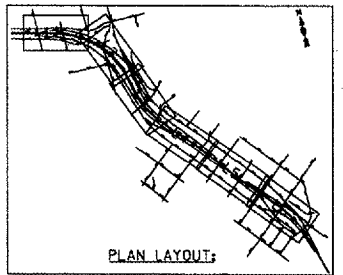
ILLINOIS DEPARTMENT OF TRANSPORTATION
 F.A.I. ROUTE 74 (I-74)
LANDSCAPE - LAYOUT 2
 SCALE = 1:500 M
 DATE: _____ DRAWN BY: K.K.K.
 CHECKED BY: R.J.D.

F.A.I. RTE.	SECTION	COUNTY	TOTAL SHEETS	SHEET NO.
74	72(7,8,9,9-1)LS	PEORIA	19	16
STA.	TO STA.			
FED. ROAD DIST. NO.	ILLINOIS	FED. AID PROJECT		



LEGEND

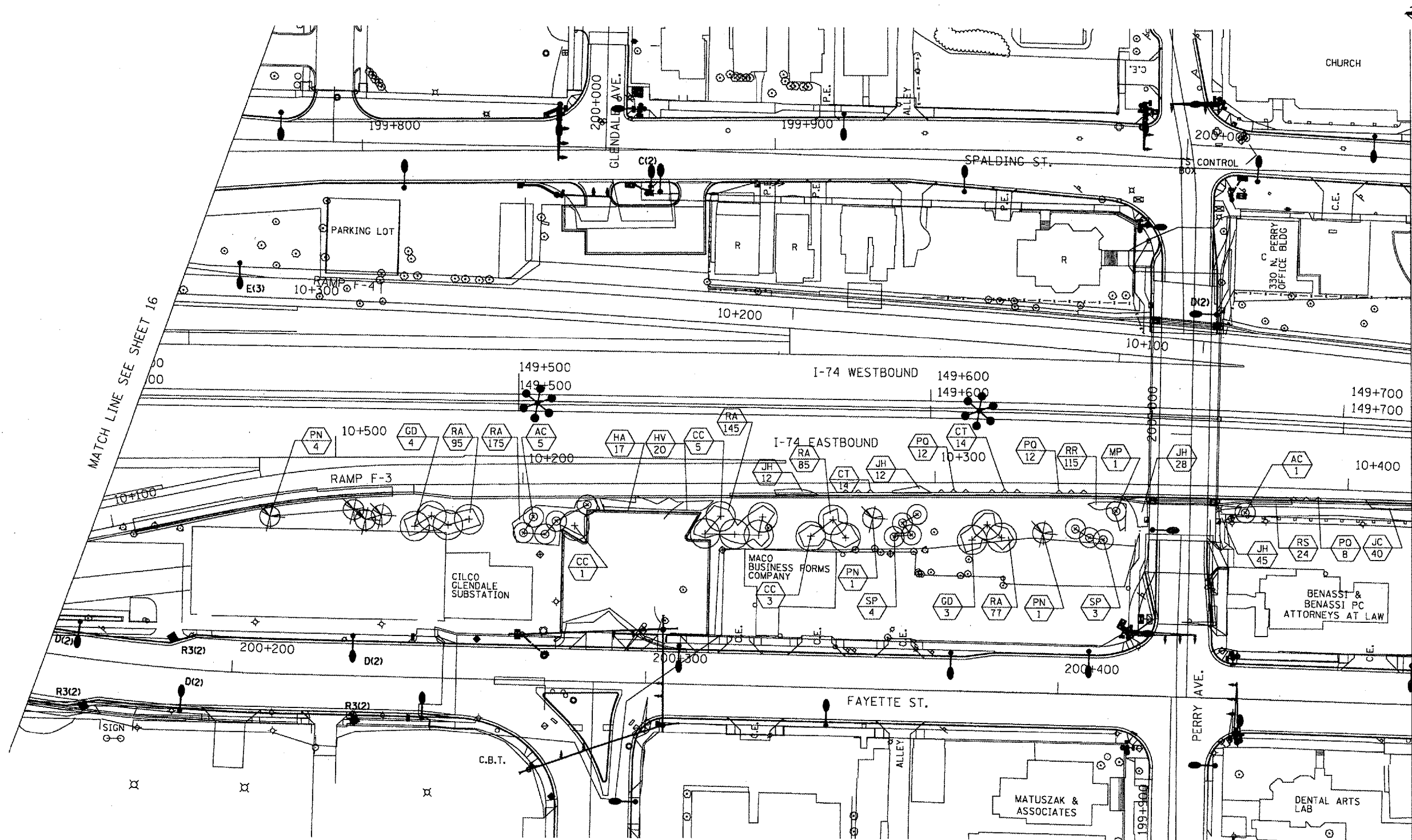
- VINES ON SOUND/RETAINING WALL
- SHRUBS
- PROPOSED EVERGREEN TREE
- PROPOSED SMALL ORNAMENTAL TREE
- PROPOSED SHADE TREE (5' DIA. MULCH SAUCER-TYP. -FOR ALL TREES & SHRUBS)
- INTERSEEDING, CLASS 4A AND/OR 5
- PERENNIAL PLANTS, FOR SUN
- PROPOSED PERENNIAL PLANTS, FOR SUN (REFER TO SHEET NO. 9)
- PROPOSED PLANT KEY (REFER TO SHEET NO. 7) PROPOSED QUANTITY OF SPECIFIED PLANT
- PROPOSED IRRIGATION CONNECTION



ILLINOIS DEPARTMENT OF TRANSPORTATION
 F.A.I. ROUTE 74 (I-74)
 LANDSCAPE - LAYOUT 3

SCALE = 1:500 M
 DATE:
 DRAWN BY: K.K.K.
 CHECKED BY: R.J.D.

F.A.I. RTE.	SECTION	COUNTY	TOTAL SHEETS	SHEET NO.
74	72(7,8,9,9-1)LS	PEORIA	19	17
STA.		TO STA.		
FED. ROAD DIST. NO.		ILLINOIS	FED. AID PROJECT	



MATCH LINE SEE SHEET 16

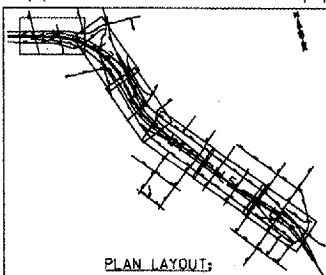
MATCH LINE SEE SHEET 18

LEGEND

- VINES ON SOUND/RETAINING WALL
- SHRUBS
- PROPOSED EVERGREEN TREE
- PROPOSED SMALL ORNAMENTAL TREE

- PROPOSED SHADE TREE (5' DIA. MULCH SAUCER-TYP. -FOR ALL TREES & SHRUBS)
- INTERSEEDING, CLASS 4A AND/OR 5
- PERENNIAL PLANTS, FOR SUN

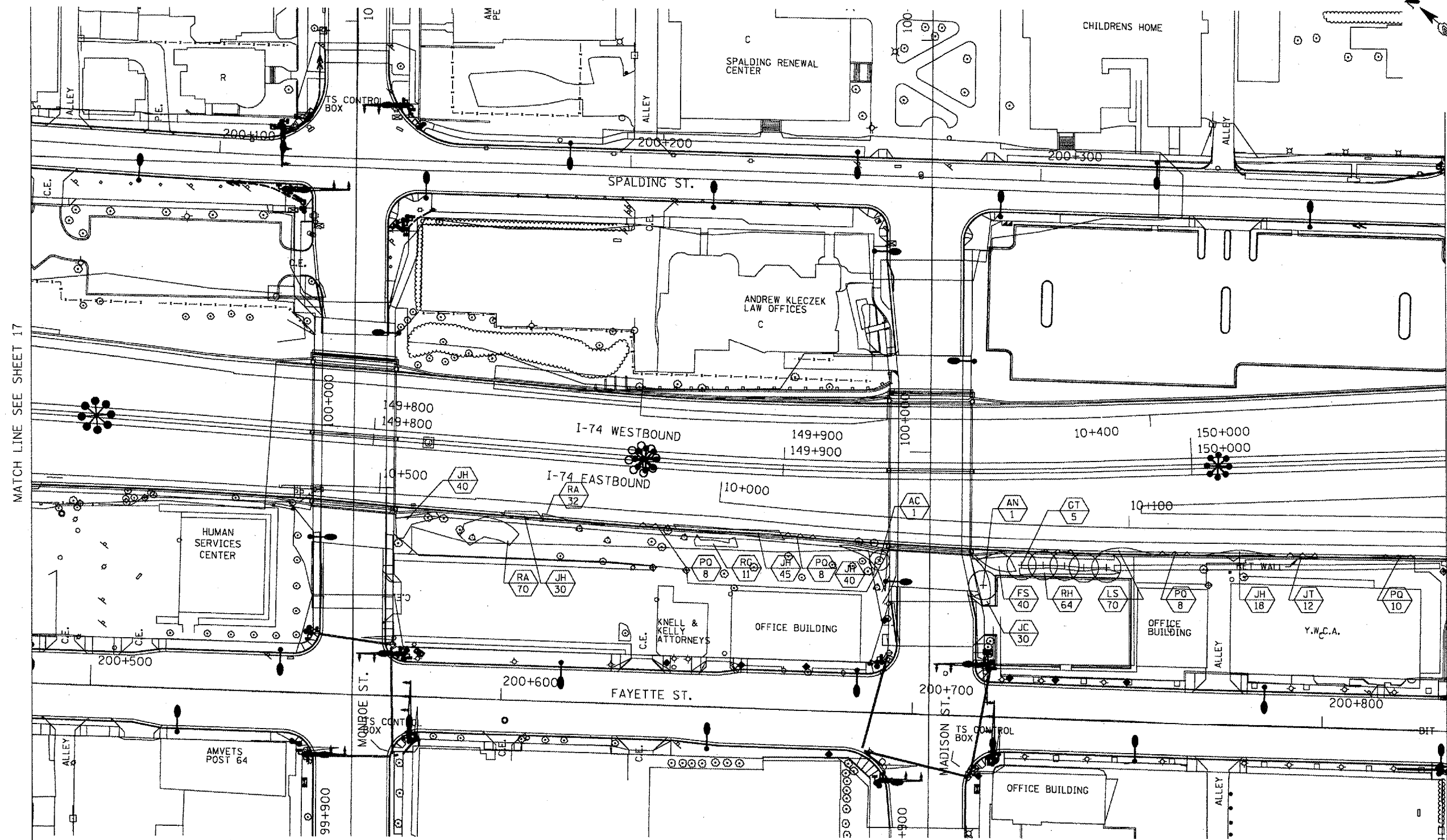
- PROPOSED PERENNIAL PLANTS, FOR SUN (REFER TO SHEET NO. 9)
- PROPOSED PLANT KEY (REFER TO SHEET NO. 7) PROPOSED QUANTITY OF SPECIFIED PLANT
- PROPOSED IRRIGATION CONNECTION



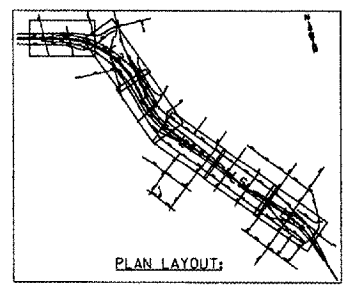
ILLINOIS DEPARTMENT OF TRANSPORTATION
 F.A.I. ROUTE 74 (I-74)
 LANDSCAPE - LAYOUT 4

SCALE = 1:500 M
 DATE: _____ DRAWN BY: K.K.K.
 CHECKED BY: R.J.D.

F.A.I. RTE.	SECTION	COUNTY	TOTAL SHEETS	SHEET NO.
74	72(7,8,9,9-1)LS	PEORIA	19	18
STA.		TO STA.		
FED. ROAD DIST. NO.		ILLINOIS	FED. AID PROJECT	



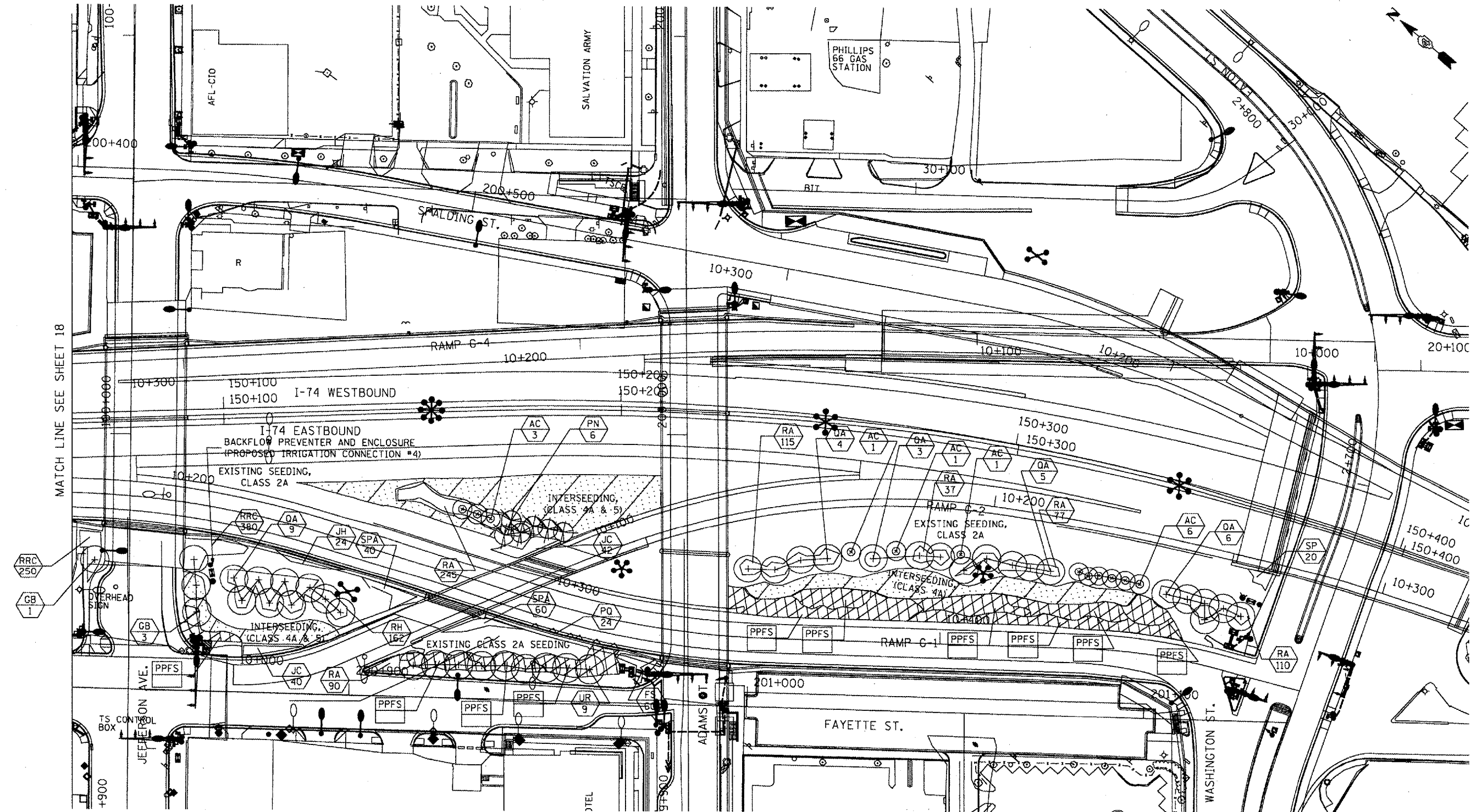
- LEGEND**
- VINES ON SOUND/RETAINING WALL
 - SHRUBS
 - PROPOSED EVERGREEN TREE
 - PROPOSED SMALL ORNAMENTAL TREE
 - PROPOSED SHADE TREE (5' DIA. MULCH SAUCER-TYP. -FOR ALL TREES & SHRUBS)
 - INTERSEEDING, CLASS 4A AND/OR 5
 - PERENNIAL PLANTS, FOR SUN
 - PROPOSED PERENNIAL PLANTS, FOR SUN (REFER TO SHEET NO. 9)
 - PROPOSED PLANT KEY (REFER TO SHEET NO. 7)
 - PROPOSED QUANTITY OF SPECIFIED PLANT
 - PROPOSED IRRIGATION CONNECTION



ILLINOIS DEPARTMENT OF TRANSPORTATION
 F.A.I. ROUTE 74 (I-74)
 LANDSCAPE - LAYOUT 5

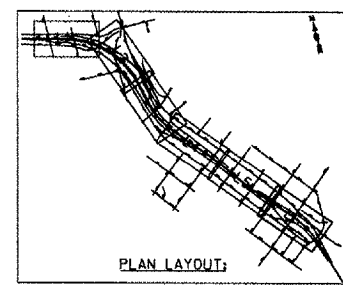
SCALE = 1:500 M
 DATE: _____
 DRAWN BY: K.K.K.
 CHECKED BY: R.J.D.

F.A.I. RTE.	SECTION	COUNTY	TOTAL SHEETS	SHEET NO.
74	72(7,8,9,9-1)LS	PEORIA	19	19
STA.	TO STA.			
FED. ROAD DIST. NO.	ILLINOIS	FED. AID PROJECT		



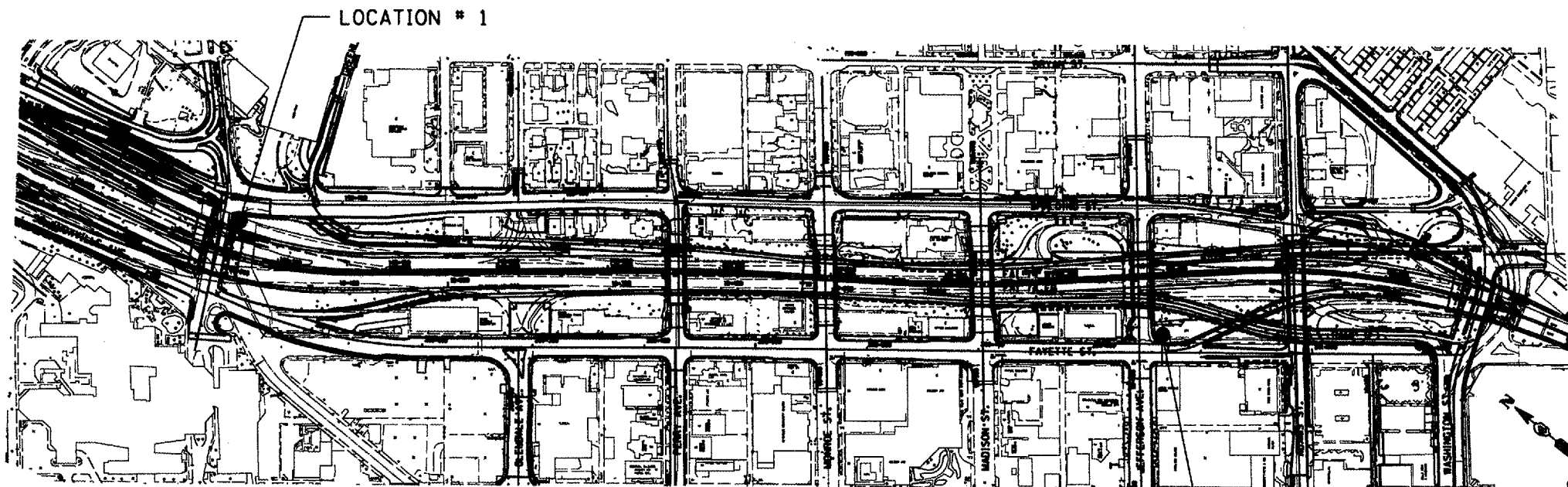
LEGEND

- VINES ON SOUND/RETAINING WALL
- SHRUBS
- PROPOSED EVERGREEN TREE
- PROPOSED SMALL ORNAMENTAL TREE
- PROPOSED SHADE TREE (5' DIA. MULCH SAUCER-TYP. -FOR ALL TREES & SHRUBS)
- INTERSEEDING, CLASS 4A AND/OR 5
- PERENNIAL PLANTS, FOR SUN
- PROPOSED PERENNIAL PLANTS, FOR SUN (REFER TO SHEET NO. 9)
- PROPOSED PLANT KEY (REFER TO SHEET NO. 7)
- PROPOSED QUANTITY OF SPECIFIED PLANT
- PROPOSED IRRIGATION CONNECTION

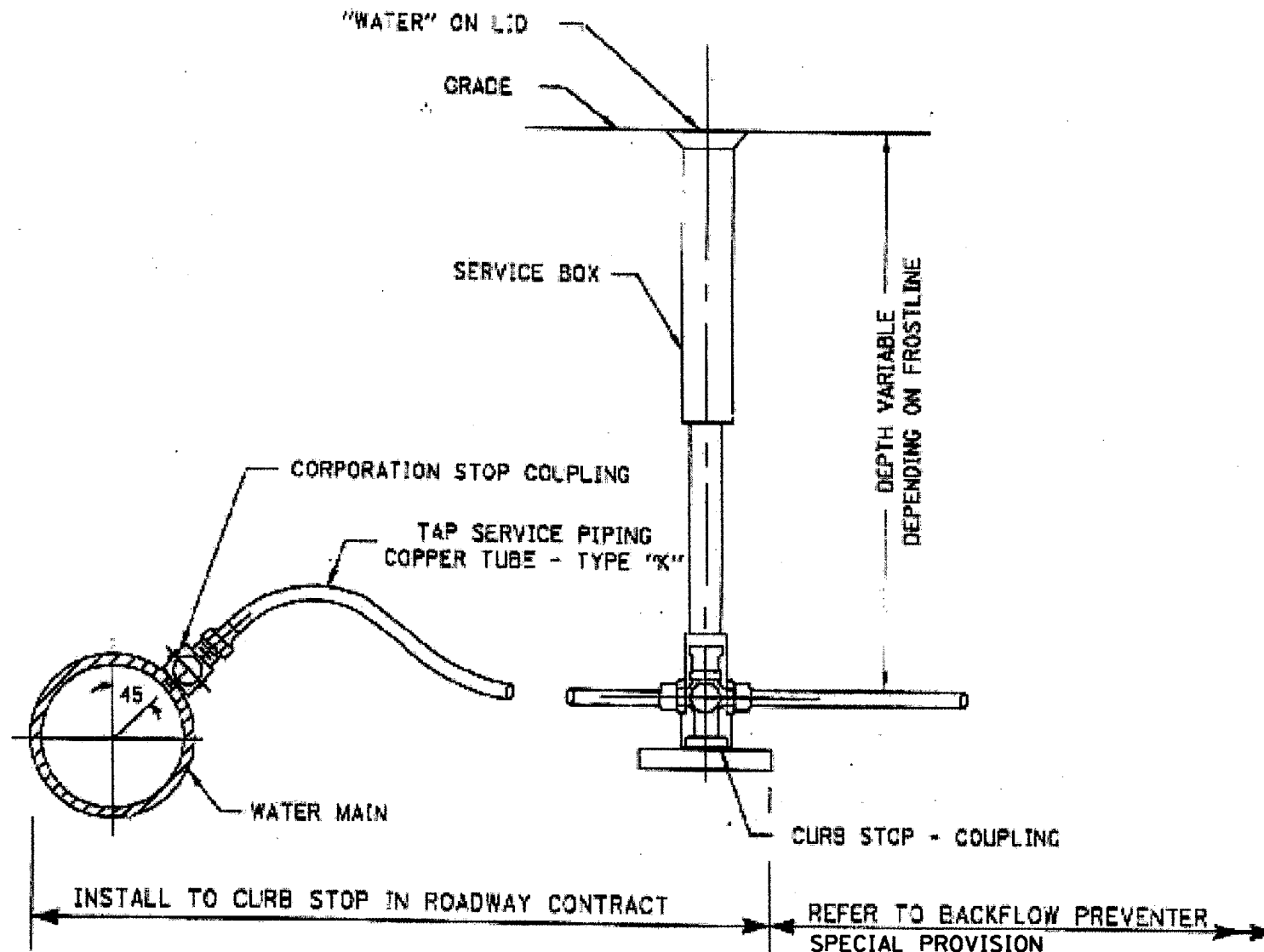


ILLINOIS DEPARTMENT OF TRANSPORTATION
 F.A.I. ROUTE 74 (I-74)
LANDSCAPE - LAYOUT 6
 SCALE = 1:500 M
 DATE: _____ DRAWN BY: K.K.K.
 CHECKED BY: R.J.D.

F.A.I. RTE.	SECTION	COUNTY	TOTAL SHEETS	SHEET NO.
74	72(7,8,9,9-1)LS-1	PEORIA	20	20
STA.	TO STA.			
FED. ROAD DIST. NO.	ILLINOIS	FED. AID PROJECT		



LOCATION # 2



SERVICE BOX LOCATIONS			
LOCATION	REF. #	STATION	OFFSET
#1	SPALDING ST.	199+615	12 M RT
#2	FAYETTE ST.	200+863	12 M RT

NOTE
 SERVICE BOX AND METER VAULT SHOULD BE LOCATED BEHIND PROPOSED SIDEWALK AND/OR CURB AND GUTTER IN THE GRASS.

ILLINOIS DEPARTMENT OF TRANSPORTATION
 F.A.I. ROUTE 74 (I-74)
 PIPING FOR LANDSCAPING WATER SERVICE
 DRAWN BY: K.K.K.
 CHECKED BY: R.J.D.
 DATE: