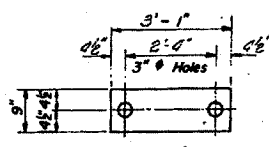


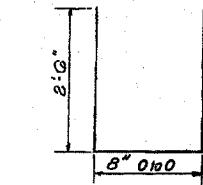
STATE OF ILLINOIS
DEPARTMENT OF TRANSPORTATION

ROUTE NO.	SECTION	COUNTY	TOTAL SHEETS	SHEET NO.
317	36 BR	IROQUOIS	29	20

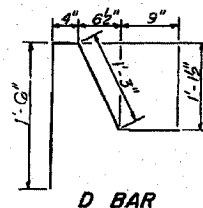
SHEETS



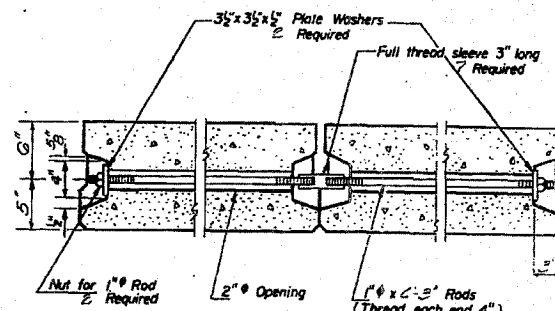
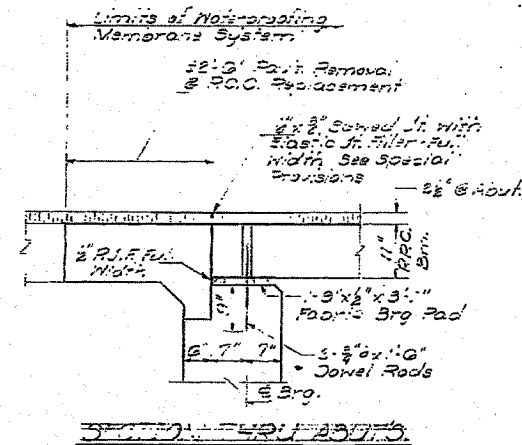
FABRIC BEARING PAD



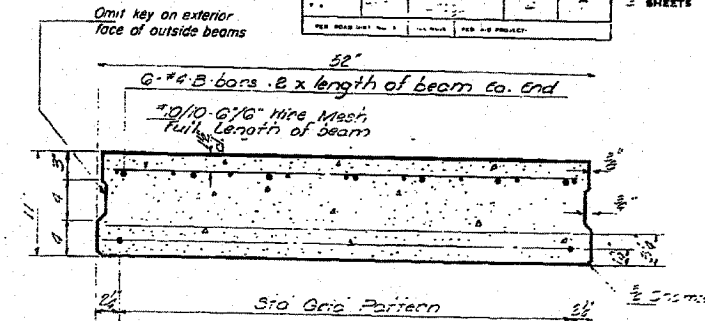
U BAR



D BAR



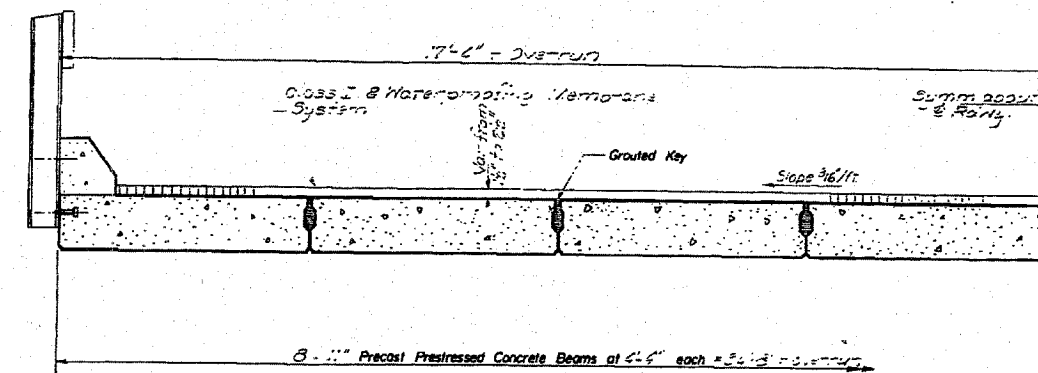
TYPICAL TRANSVERSE TIE ASSEMBLY



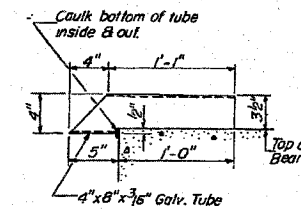
TYPICAL SECTION

2-#8 Strands Each Strand Stressed to 22,000 lbs.
3-Strands 1 1/2" up 4-Strands 3 1/2" up

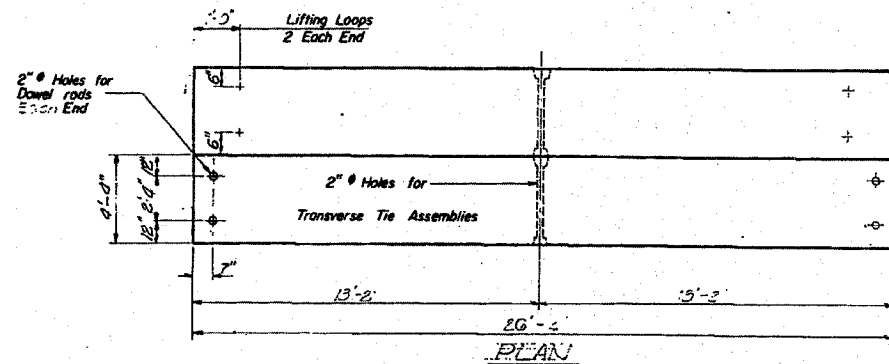
Note: Place Strands Symmetrically about E of beam.



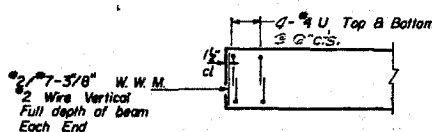
HALF CROSS SECTION



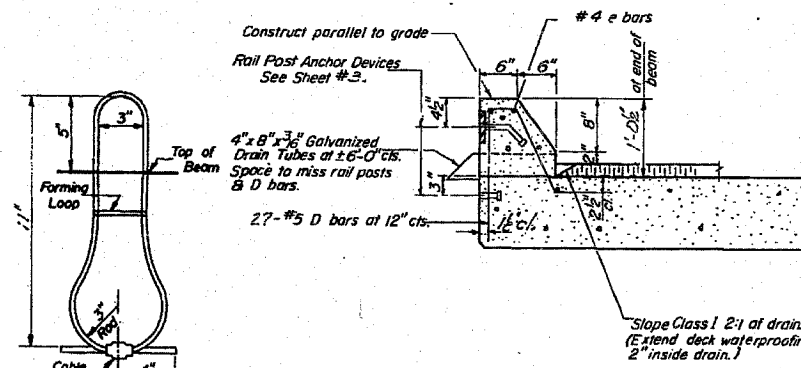
DRAIN DETAIL



PLAN



END PLAN



SECTION THRU CURB

Curbs shall be poured in the field.
Class X Concrete & e bars for curbs are billed on Sheet #3

GENERAL NOTES

Prestressing steel shall be non-galvanized high strength, stress-relieved 7-wire strand G-305-270. The nominal diameter shall be 3/8" and the nominal cross-sectional area shall be 0.55 sq. in. Lifting loops shall be 1/2" diameter, 6x19 class wire rope with fiber core and shall have a minimum ultimate tensile strength of 2,000 lbs. The 1" rods in the transverse tie assembly shall be tightened to a snug fit and the threads set. Pockets that receive transverse tie bar on outside beam shall be filled with grout after transverse tie assembly is in place. Longitudinal shear keys shall be packed with a very dry mix of 2:1 sand and P.C. mortar. After beams have been erected, holes for the dowel anchors shall be drilled into the sub-structure and the anchor dowels shall be grouted in place. Dowel rods shall be A-36 steel 1/2" dia. or 3/4" dia. Transverse tie rods shall be A-36 steel 1/2" dia. or 3/4" dia. After fabrication the transverse tie assemblies (tie rods, nuts, washers and sleeves) shall be hot-dipped galvanized in accordance with A.A.S.H.O. M-282. Cast of reinforcement and accessories cast into the beam, of bearing pads, of armor angles, and of grouting longitudinal shear keys is included in unit price bid for "Precast Prestressed Concrete Deck Beams."

BILL OF MATERIAL

Bar	No.	Size	Length	Shape
Precast Prestressed Concrete Deck Beams (11')		Sq. Ft.		SE

30212571 0719
S.E. P. R. S. 310 3039
30212571 0719
STA. 1120+700

W-SR-1 (11-15-71)

DESIGNED	EXAMINED
CHECKED	PASSED
DRAWN	APPROVED
CHECKED	

DESIGNED BY	DATE
EXAMINED BY	DATE
PASSED BY	DATE
APPROVED BY	DATE

LIFTING LOOP DETAIL