

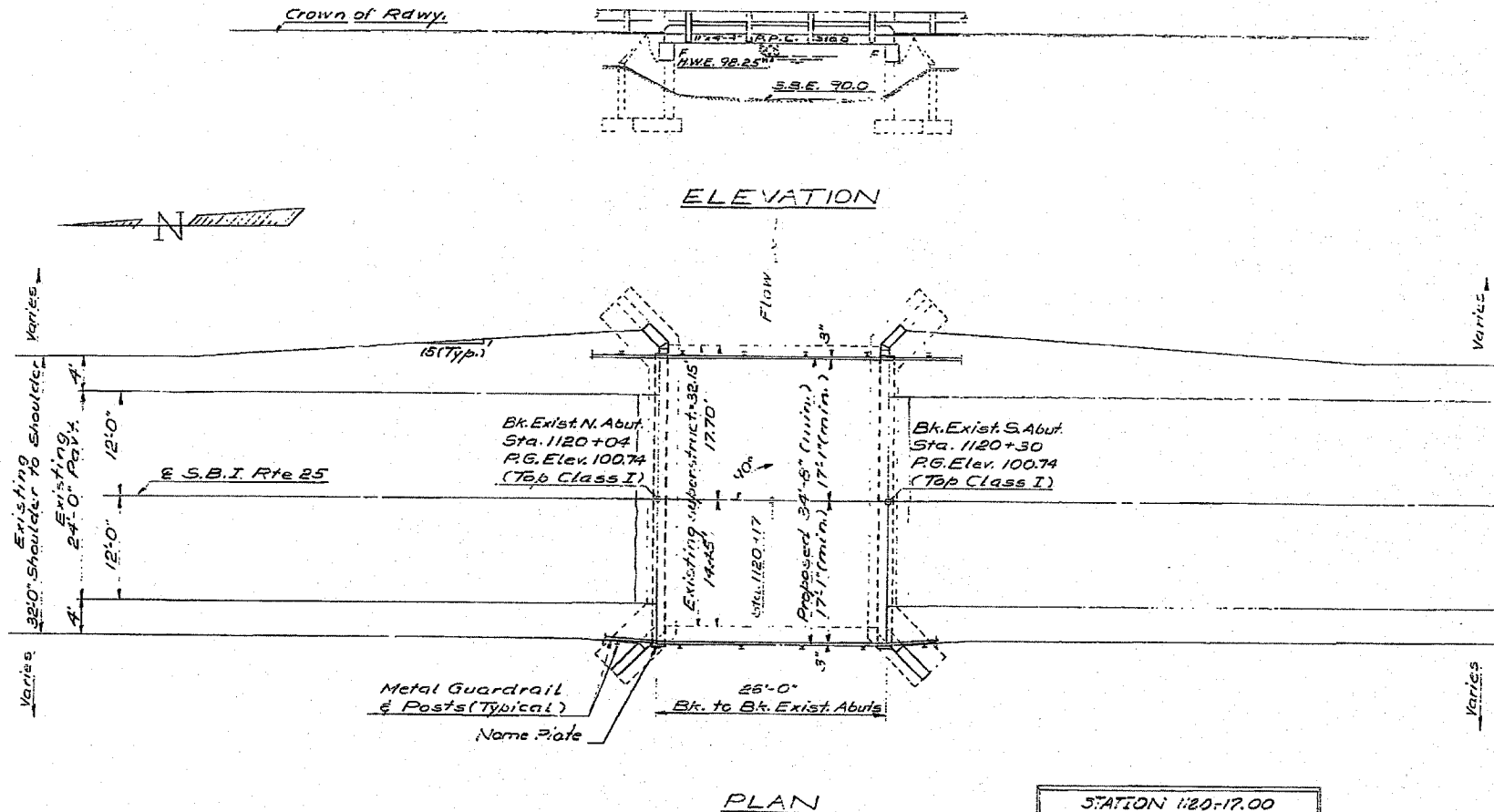
STATE OF ILLINOIS  
DEPARTMENT OF TRANSPORTATION

ROUTE NO.	SECTION	COUNTY	TOTAL SHEETS	SHEET NO.
S.B.I. 25	36 BR	Iroquois	16	8
SHEETS				

B.M. #10 on top N.W. Wingwall 17' Rt. Sta. 1120+02  
Elev. = 100.00  
Existing Structure No. 038-0038, Built as S.B.I.  
Rte. 25, Sec. 36, at Station 1120+17 in 1930.  
The existing R.C. slab superstructure shall be  
removed and the R.C. closed abutment sub-  
structure and Wingwalls rebuilt to accommodate  
the new P.P.C. Slab Beam superstructure.  
Traffic will be detoured during reconstruction.  
Existing steel rail (East side) to be salvaged.  
No other salvages.

GENERAL NOTES

It shall be the responsibility of the Contractor to verify all dimensions and conditions existing in the field prior to construction and ordering of materials.  
The top surface of the beams shall be finished in accordance with Article 505D6 of the Standard Specifications except that the surface shall not be roughened by brooming. The finished surface shall be free of depressions or high spots with sharp corners.  
Expansion bolts shall consist of self drilling expansion anchors and 3/4" x 12" hooked bolts for bonding new concrete to existing concrete.  
Protective Coat shall not be applied to surfaces to which Waterproofing Membrane System is applied.  
Expansion Bolts for temporary bracing shall be 3/4" Hex-headed bolts.  
Reinforcement bars shall conform to the requirements of A.S.T.M. A-307, A-36, A-53, Grade 30 unless otherwise specified.



TOTAL BILL OF MATERIAL

ITEM	UNIT	SUPER.	SUB.	TOTAL
Bit. Conc. Surf. Cse. Class I	Sq. Yds.	7		7
Concrete Remova.	Cu. Yds.		4	4
Expansion Bolts (3/4")	Each		58	58
Class X Concrete	Cu. Yds.	1.0	2.0	3.0
Precast Prestressed Conc. Slab 3m (12")	Sq. Ft.	9.3		9.3
Steel Paving Type 5	Lin. Ft.	53		53
Reinforcement Bars	Lbs.	70	1565	1635
Pav. Rem. & P.C.C. Replace Type 2 (10")	Sq. Yds.	13		13
Removal of Exist. Superstructure	Each			
Waterproofing Membrane Sys.	Sq. Yds.	15		15
Name Plates	Each			
Protective Coat	Sq. Yds.	10		10
Portland Cement Mortar Paving Cse. (in. Ft.)	Lin. Ft.	184		184

\*Does not include expansion bolts for temporary bracing.

STATION 1120+17.00  
REBUILT BY  
STATE OF ILLINOIS  
S.B.I. RTE 25 SEC. 36 BR  
LOADING H-20  
STR. No.

NAME PLATE  
See Sp. 213  
(Structure numbers to be supplied  
by District.)

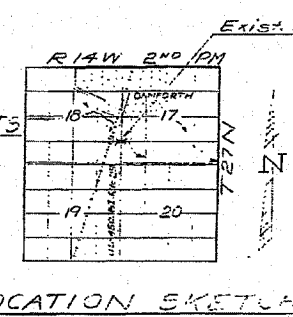
PROPOSED PROFILE & SBI RTE 25  
(Top Class I)

Sta. 1120+00 Elev. 100.74  
0.00% Sta. Increase

DESIGNED	John S. Schuller	EXAMINED	February 27, 1977
CHECKED	J. SCHNELLER	PASSED	
DRAWN	V.H.	APPROVED	
CHECKED	J.E.		

WATERWAY INFORMATION  
Drainage Area = 2.6 sq. mi.  
Proposed Opening (between S.B.I. & M.W.E.) 143 sq. ft.  
Existing = 143  
Required = 143  
High Water Elev. (50 yr.) = 98.25  
Created Head (50 yr.) = 0.2'  
Design Discharge (50 yr.) = 540 c.f.s.  
High Water Elev. (100 yr.) = 99.0  
Created Head (100 yr.) = 0.3'  
Design Discharge (100 yr.) = 690 c.f.s.

DESIGN STRESSES  
PRECAST PRESTRESSED UNITS FIELD UNITS  
fc = 5,000 psi  
fs = 4,000 psi  
fs = 272,000 psi (4' Strands)  
fs = 129,000 psi (2' Strands)  
fc = 3,500 psi  
fy = 60,000 psi  
Loading H-20 (New Construction)  
Design Specifications: 1973 AASHTO, 1974, 1975  
1976 Interim Specifications.



GENERAL PLAN & ELEVATION  
S.B.I. RTE. 25 OVER DRAINAGE  
DISTRICT DITCH  
S.B.I. RTE. 25 SECTION 36 BR  
IROQUOIS COUNTY  
STA. 1120+17.00