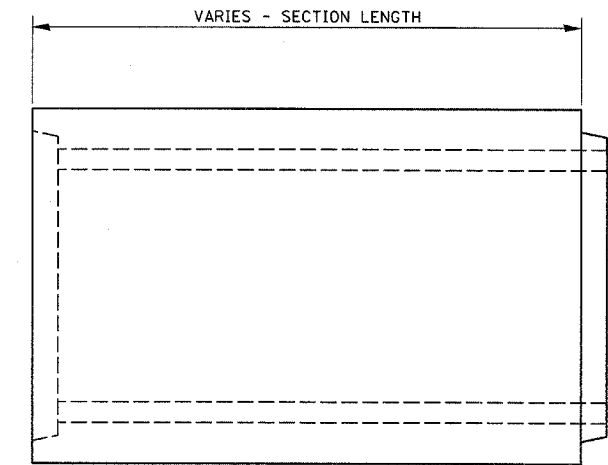


SECTION THROUGH PRECAST BOX CULVERT

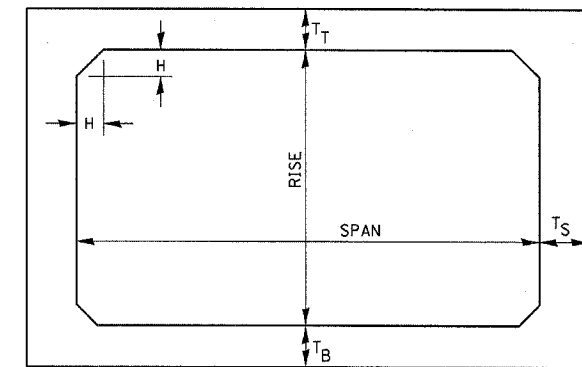
SPAN, FEET	T _T , INCHES		T _B , INCHES		T _S , INCHES	
	M 259	M 273	M 259	M 273	M 259	M 273
3	4	7	4	6	4	4
4	5	7 1/2	5	6	5	5
5	6	8	6	7	6	6
6	7	8	7	7	7	7
7	8	8	8	8	8	8
8	8	8	8	8	8	8
9	9	9	9	9	9	9
10	10	10	10	10	10	10
11	11	11	11	11	11	11
12	12	12	12	12	12	12

TYPICAL THICKNESSES

MINIMUM COVER FOR BOX CULVERTS SHALL BE 6".

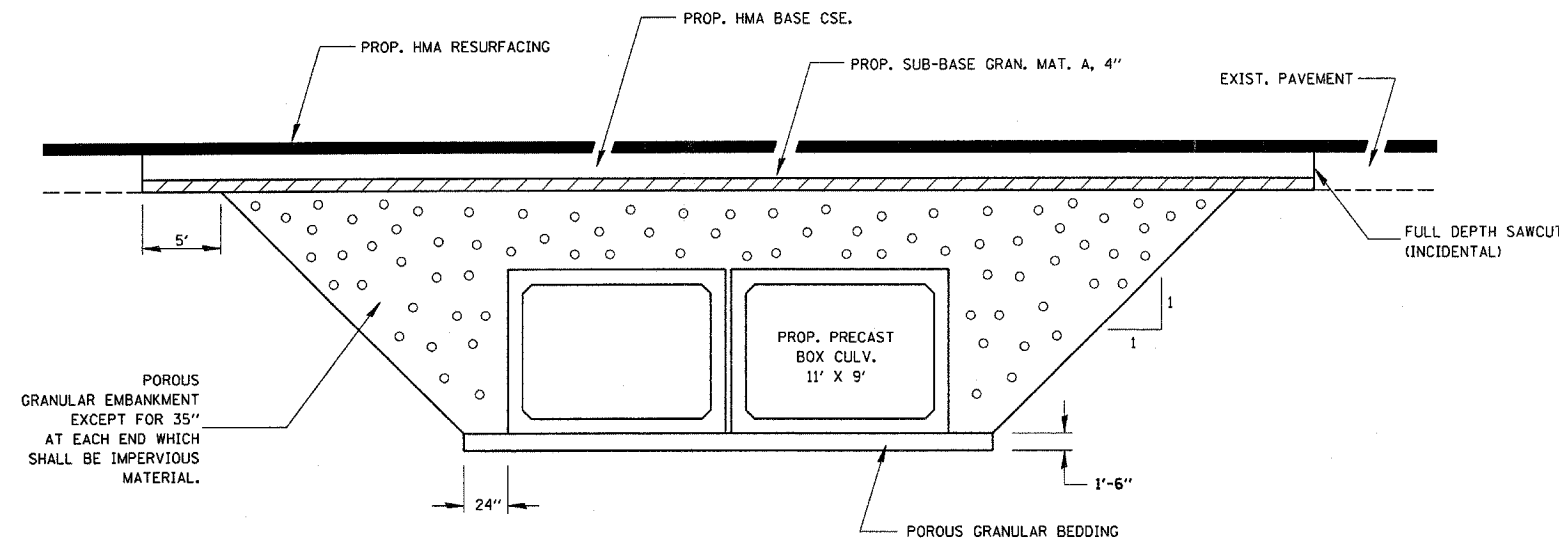


ELEVATION



NOTE: THE HAUNCH DIMENSION H, IS EQUAL TO THE WALL THICKNESS T_S.

TYPICAL BOX SECTION



SECTION THROUGH PRECAST BOX CULVERT

GENERAL PLAN
US45 OVER PRAIRIE CREEK
FAS ROUTE 317 - SECTION 36BR
IROQUOIS COUNTY
STATION 1120+16.78
PROP. S.N. 038-2017

FILE NAME = c:\projects\led\3805\sheet.dgn	USER NAME = ferguson	DESIGNED -	REVISED -	STATE OF ILLINOIS DEPARTMENT OF TRANSPORTATION	CULVERT SHEET	F.A.S. RTE. 317	SECTION 36 BR	COUNTY IROQUOIS	TOTAL SHEETS 29	SHEET NO. 14	
PLOT SCALE = 20.0000 / IN.	CHECKED -	REVISED -	REVISED -			SCALE:	SHEET NO. OF SHEETS	STA. TO STA.	CONTRACT NO. 66646		
PLOT DATE = Oct 31, 2007 - 03:53:52 PM	DATE -	REVISED -	REVISED -			FED. ROAD DIST. NO. ILLINOIS FED. AID PROJECT					