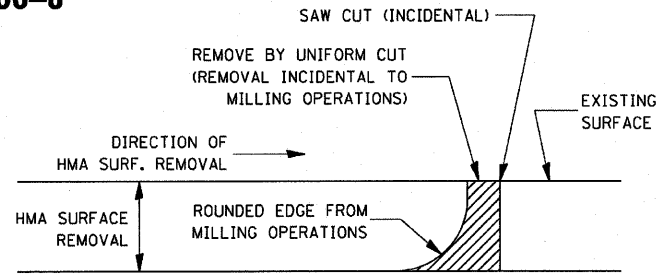
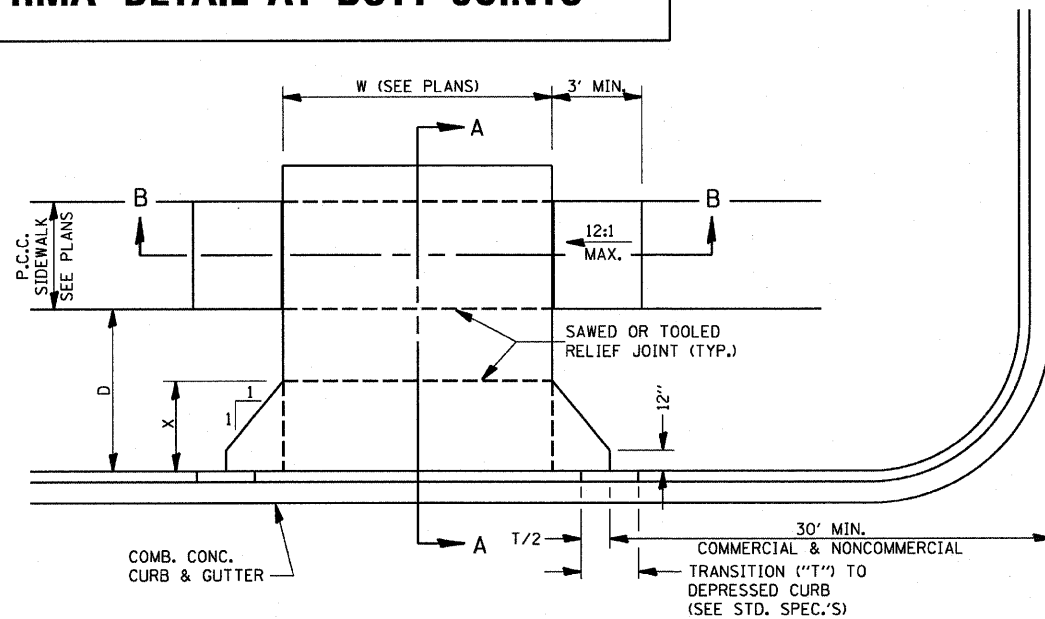


406-8

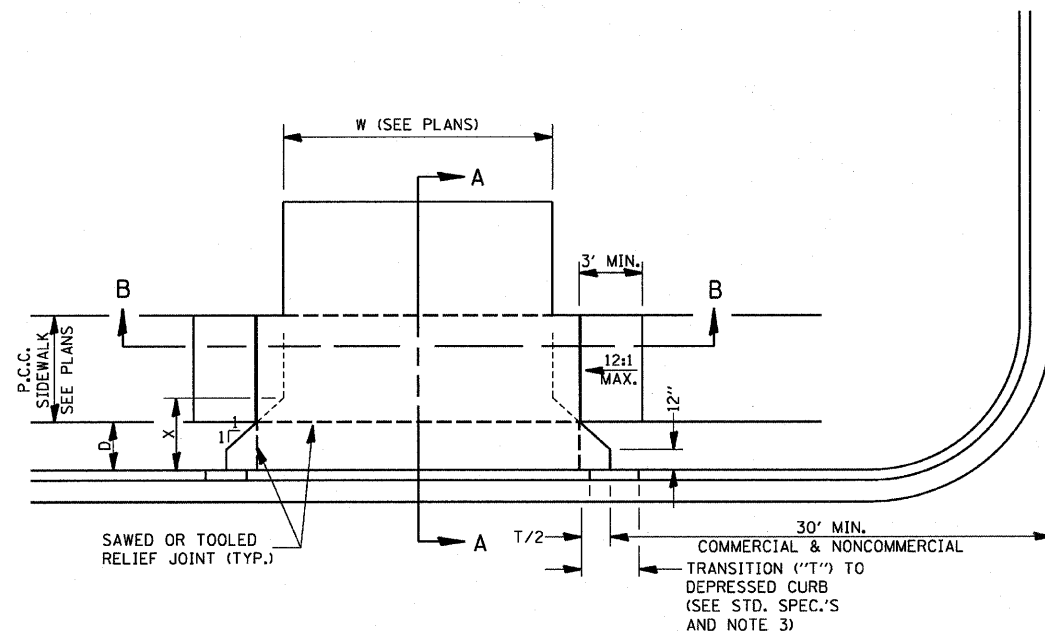


NOTE:  
WHEN MILLING OPERATIONS PRODUCE A ROUNDED EDGE, THEN A SAW CUT SHALL BE USED TO MANUFACTURE A PERPENDICULAR EDGE AS SHOWN IN THE DETAIL. THE ENGINEER SHALL BE THE SOLE JUDGE CONCERNING THE USE OF THIS DETAIL

**HMA DETAIL AT BUTT JOINTS**



CASE I (D ≥ X)

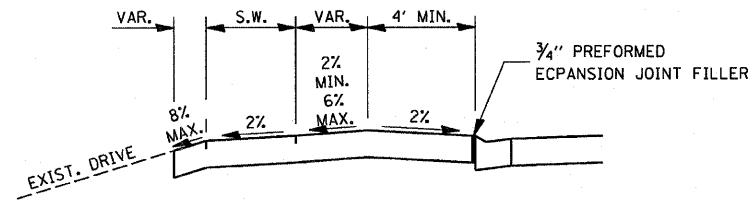


CASE I (D < X)

PLOT DATE = 10/14/2007  
FILE NAME = REFLECT  
PLOT SCALE = ESCALE  
USER NAME = project

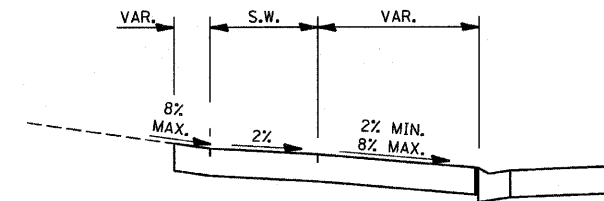


CONTRACT NO.			
F.A.P. RTE.	SECTION	COUNTY	TOTAL SHEET NO.
786	(109) BR	LASALLE	351 292
STA.		TO STA.	
FED. ROAD DIST. NO.		ILLINOIS FED. AID PROJECT	

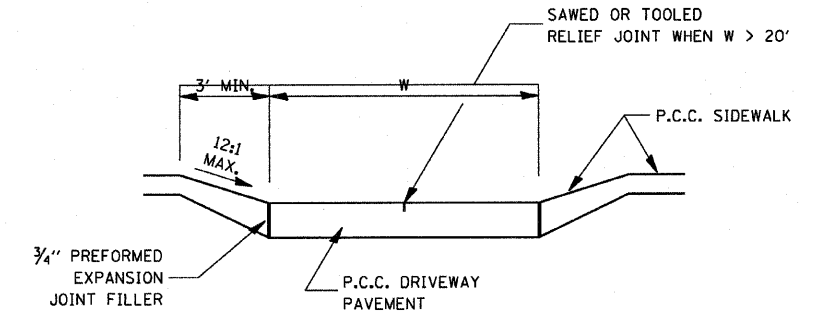


DEPRESSED ENTRANCE\*  
SECTION A-A

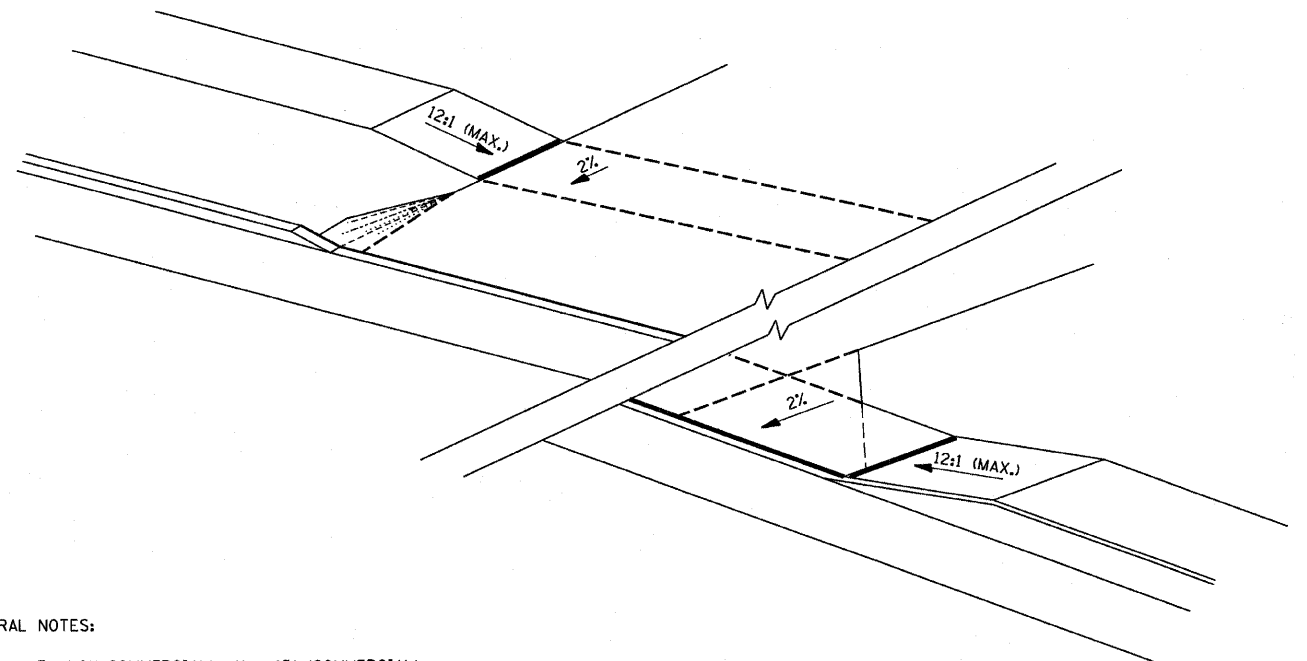
\*(SEE X-SECTIONS FOR ENTRANCE PROFILE.)



ELEVATED ENTRANCE\*  
SECTION A-A



SECTION B-B



GENERAL NOTES:

- X = 7' (NON-COMMERCIAL) X = 15' (COMMERCIAL)
- COST OF EXPANSION JOINTS AND RELIEF JOINTS SHALL BE INCLUDED IN THE COST OF THE P.C.C. DRIVEWAY PAVEMENT.
- AS THE DIMENSION "D" APPROACHES ZERO, THE TRANSITION TO DEPRESSED CURB SHALL BE NO STEEPER THAN 12:1

**PCC URBAN ENTRANCES**

423-1

REVISIONS	
NAME	DATE

ILLINOIS DEPARTMENT OF TRANSPORTATION

DISTRICT 3 STANDARDS

SCALE: 1" = 20"  
DATE OCTOBER, 2007

DRAWN BY CJO  
CHECKED BY JCL