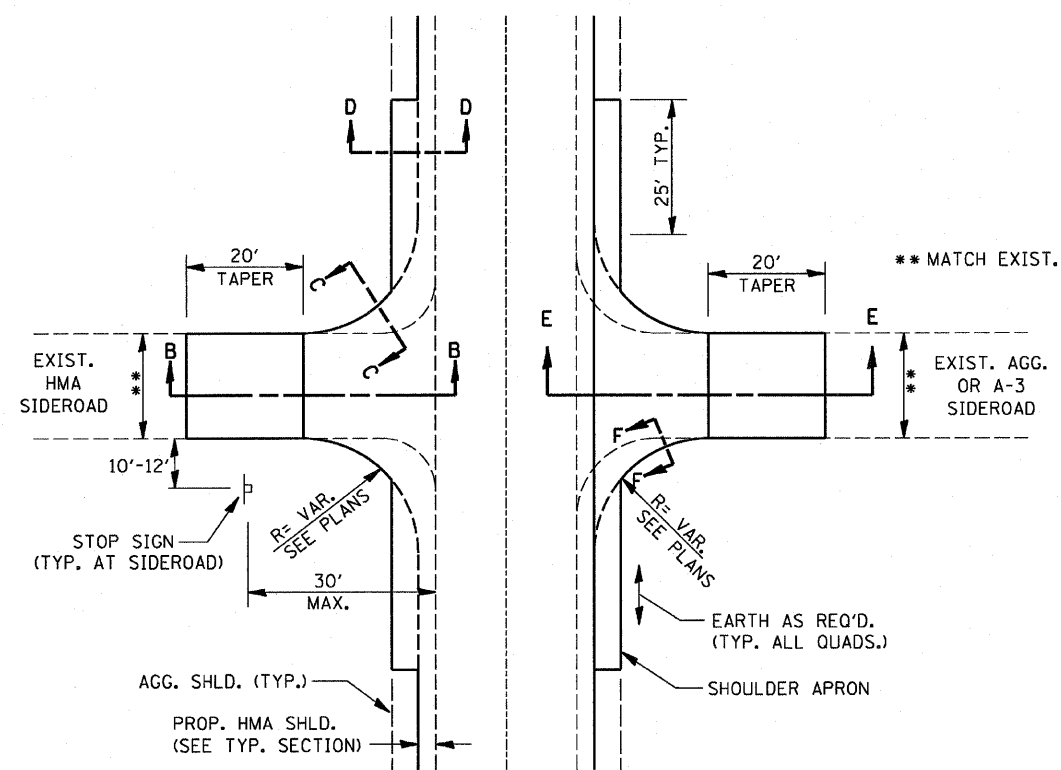
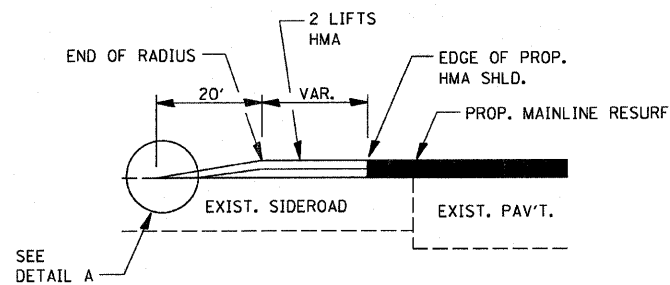


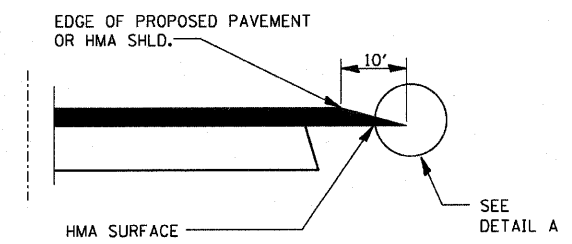
F.A.P. RTE.	SECTION	COUNTY	TOTAL SHEETS	SHEET NO.
786	(109) BR	LASALLE	351	291
STA.		TO STA.		
FED. ROAD DIST. NO.		ILLINOIS FED. AID PROJECT		



**SIDEROAD DETAIL**



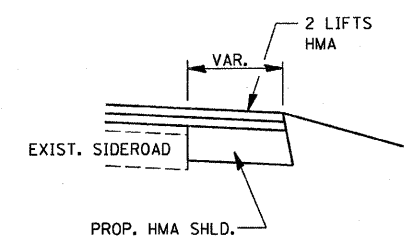
**SECTION B-B**



PRIVATE & COMMERCIAL ENTRANCES

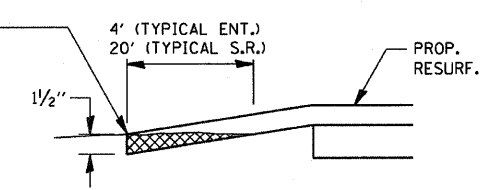
**SECTION A-A**

**DETAILS AT ENTRANCES**

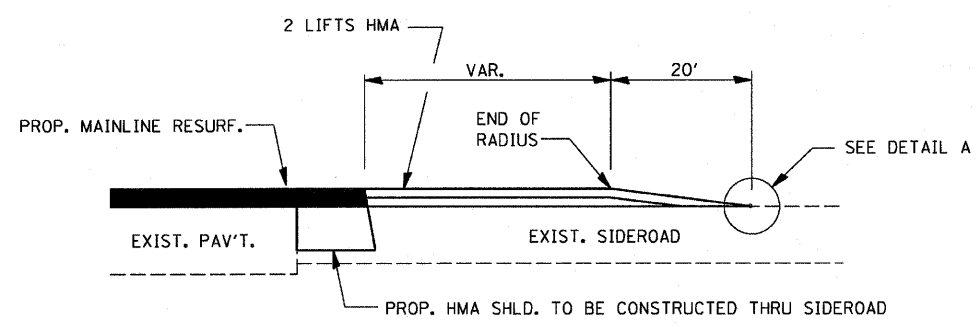


**SECTION C-C**

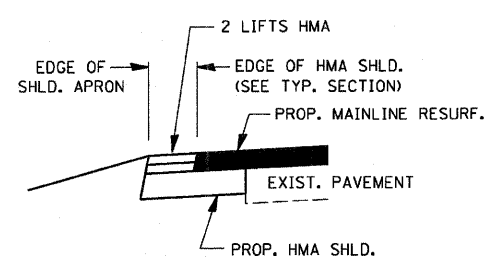
THE COST OF REMOVAL AT EXISTING HMA OR P.C.C. LOCATIONS SHALL BE PAID FOR PER SQ. YD. BY THE APPROPRIATE PAY ITEM. REMOVAL AT THE EXISTING AGG. LOCATIONS SHALL BE INCIDENTAL TO THE HMA. A-3 LOCATIONS SHALL BE FEATHER TAPERED.



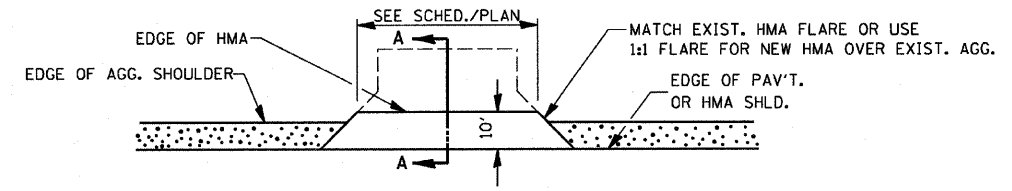
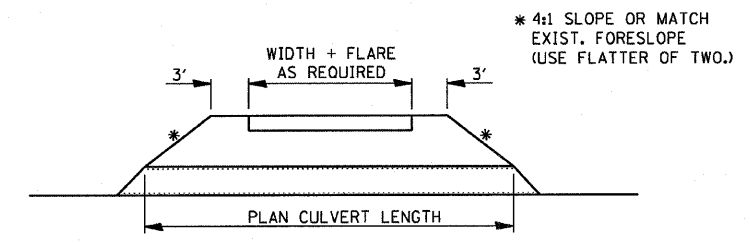
**DETAIL A**



**SECTION E-E**

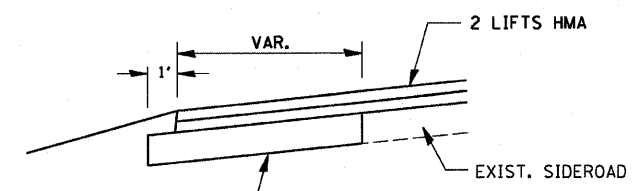


**SECTION D-D**



**PLAN AT PRIVATE & COMMERCIAL ENTRANCES**

(DO NOT RESURFACE FIELD ENTRANCES)



AGG. BASE CSE., TY. A - 8"  
NOTE: SHOULDER APRON TO BE CONSTRUCTED THE SAME AS RADIUS WIDENING.

**SECTION F-F**

PLOT DATE = 10/14/2007  
FILE NAME = #F1E1  
PLOT SCALE = #SCALE  
USER NAME = #projnet

REVISIONS	
NAME	DATE

ILLINOIS DEPARTMENT OF TRANSPORTATION

**DISTRICT 3 STANDARDS**

SCALE: 1" = 20'  
DATE: OCTOBER, 2007  
DRAWN BY: CJO  
CHECKED BY: JCL