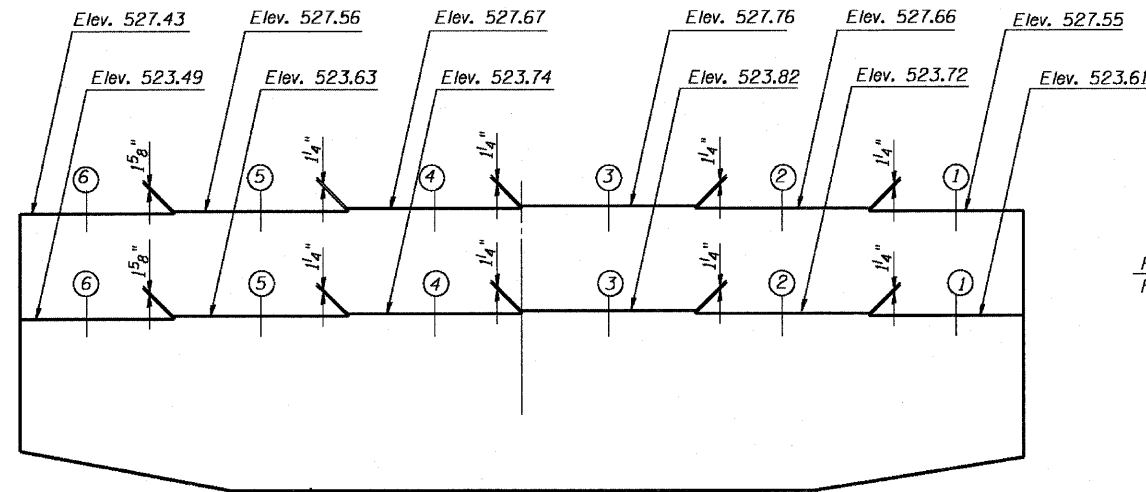


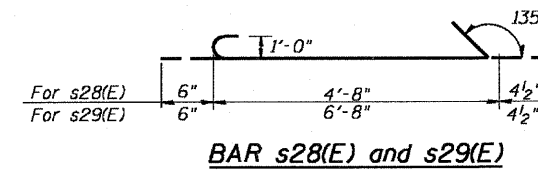
Contract # 66607



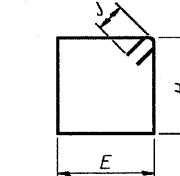
**TOP OF PIER 2**  
(Showing Steps Elevations)

**E, H & J DIMENSIONS**

Bar	E	H	J
s20(E)	4'-0"	5'-8"	8"
s24(E)	2'-10"	8'-4"	8"
s25(E)	4'-0"	4'-8"	8"
s26(E)	6'-0"	4'-8"	8"



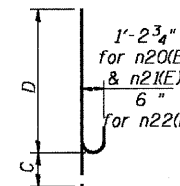
**BAR s28(E) and s29(E)**



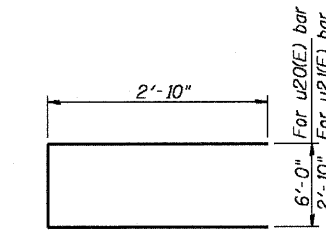
**BAR syy(E)**

**C & D DIMENSIONS**

Bar	C	D
n20(E)	1'-7"	12'-0"
n21(E)	1'-7"	15'-0"
n22(E)	8"	8'-7"

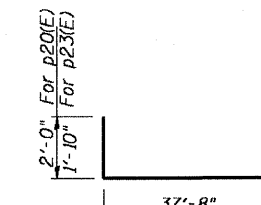


**BARS nxx(E)**

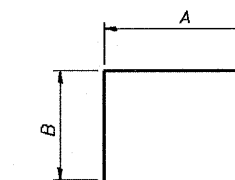


**BAR u20(E) & u21(E)**

**BAR n20(E) n21(E) & n22(E)**



**BAR p20(E) & p23(E)**

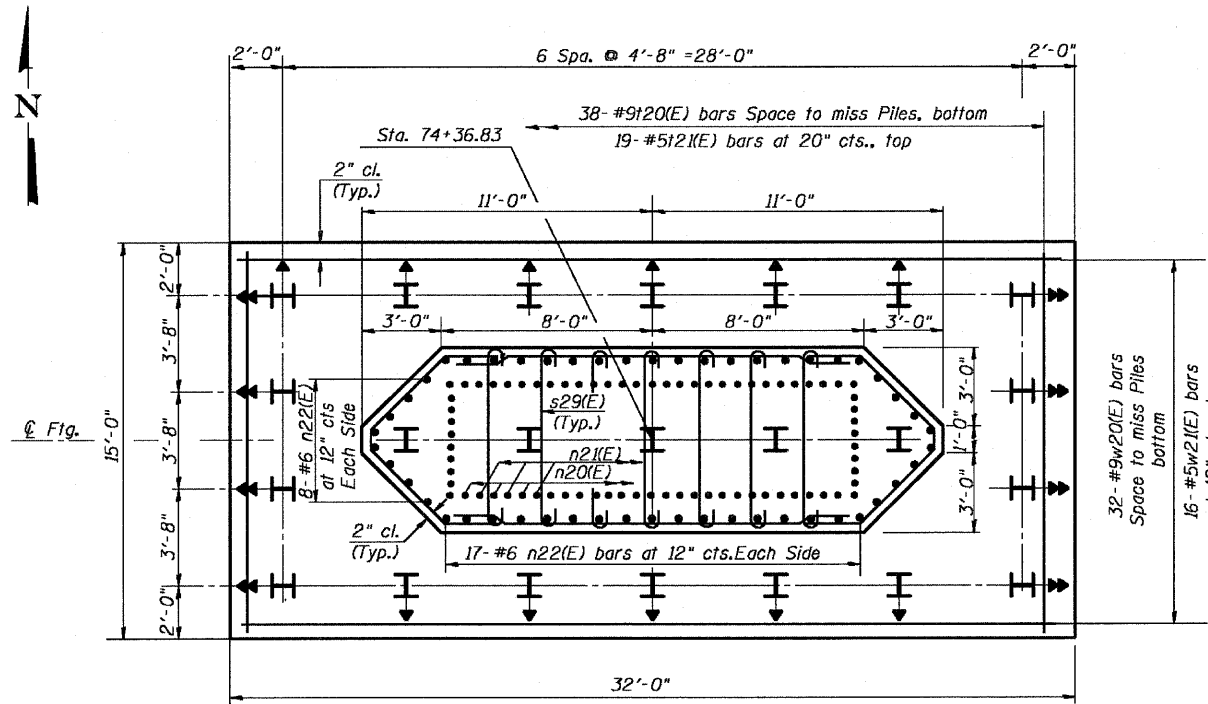


**BARS sxx(E)**

**A & B DIMENSIONS**

Bar	A	B
s21(E)	6'-0"	1'-0"
s22(E)	5'-8"	2'-8"
s23(E)	2'-10"	2'-6"
s27(E)	6'-0"	4'-0"

**BARS sxx(E)**

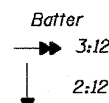


**FOOTING PLAN**

**PILE DATA**

DESIGNED - RJC
CHECKED - DEV
DRAWN - JHR
CHECKED - DEV

Type: HP12x74 with Pile Shoes  
Nominal Required Bearing = 589K  
Allowable Resistance Available = 196K  
Est. Length: 35'  
No. Production Piles: 22  
No. Test Piles: 1



**BAR u22(E)**

**Notes:**

Space reinforcement in cap to miss anchor bolts.  
Pour steps monolithically with cap.  
For details of piles, see sheet 81 of 89.

**BILL OF MATERIAL**

Bar	No.	Size	Length	Shape
h20(E)	16	#9	37'-8"	—
h21(E)	40	#6	15'-8"	—
h22(E)	10	#6	16'-0"	—
h23(E)	8	#5	19'-5"	—
n20(E)	38	#11	13'-7"	—
n21(E)	36	#11	16'-7"	—
n22(E)	50	#6	9'-3"	—
p20(E)	15	#11	41'-8"	—
p21(E)	6	#9	37'-10"	—
p22(E)	7	#9	37'-8"	—
p23(E)	18	#10	41'-4"	—
s20(E)	62	#6	20'-8"	—
s21(E)	52	#6	8'-0"	—
s22(E)	40	#6	11'-0"	—
s23(E)	48	#6	7'-10"	—
s24(E)	61	#6	23'-8"	—
s25(E)	38	#6	18'-8"	—
s26(E)	38	#6	22'-8"	—
s27(E)	38	#6	14'-0"	—
s28(E)	140	#4	5'-7"	—
s29(E)	35	#4	7'-7"	—
t20(E)	38	#9	14'-8"	—
t21(E)	19	#5	14'-8"	—
u20(E)	10	#6	11'-8"	—
u21(E)	8	#6	8'-6"	—
u22(E)	10	#6	14'-6"	—
v20(E)	38	#11	24'-7"	—
v21(E)	36	#11	21'-7"	—
w20(E)	32	#9	31'-8"	—
w21(E)	16	#5	31'-8"	—
Structure Excavation	Cu. Yd.	133		
Concrete Structures	Cu. Yd.	228		
Reinforcement Bars, Epoxy Coated	Pound	44,320		
Furnishing Steel Piles HP 12x74	Foot	770		
Driving Piles	Foot	770		
Test Pile,	Each	1		
Mechanical Splice	Each	74		
Pile Shoes	Each	23		

**PIER 2 DETAILS**  
**IL. 170 F.A.P. 786 OVER**  
**ILLINOIS RIVER AT SENECA**  
**PUBLIC WATERS**  
**LA SALLE COUNTY, SECTION 109 BR**  
**STATION 79+04.42**  
**STRUCTURE NO. 050-0246**