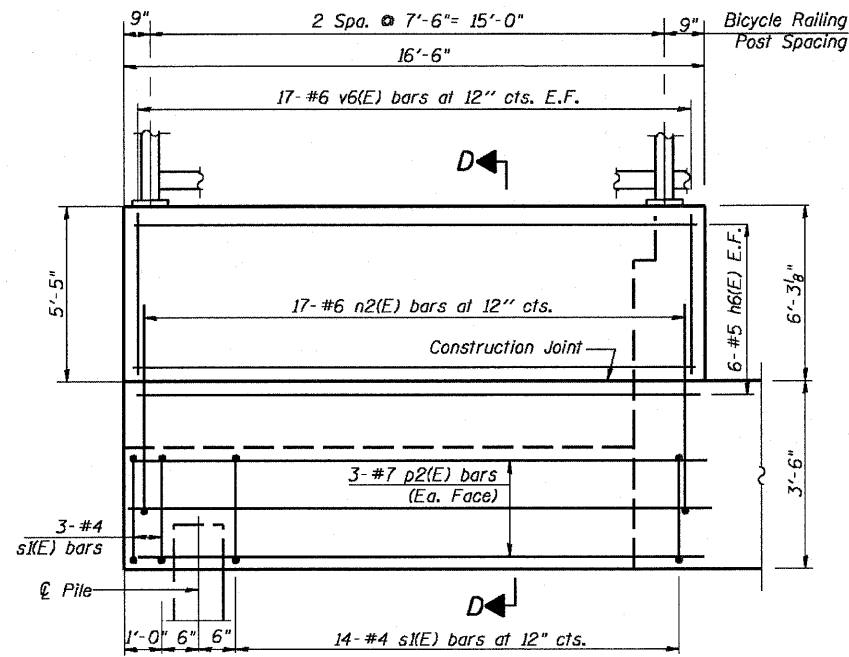


STATE OF ILLINOIS  
DEPARTMENT OF TRANSPORTATION

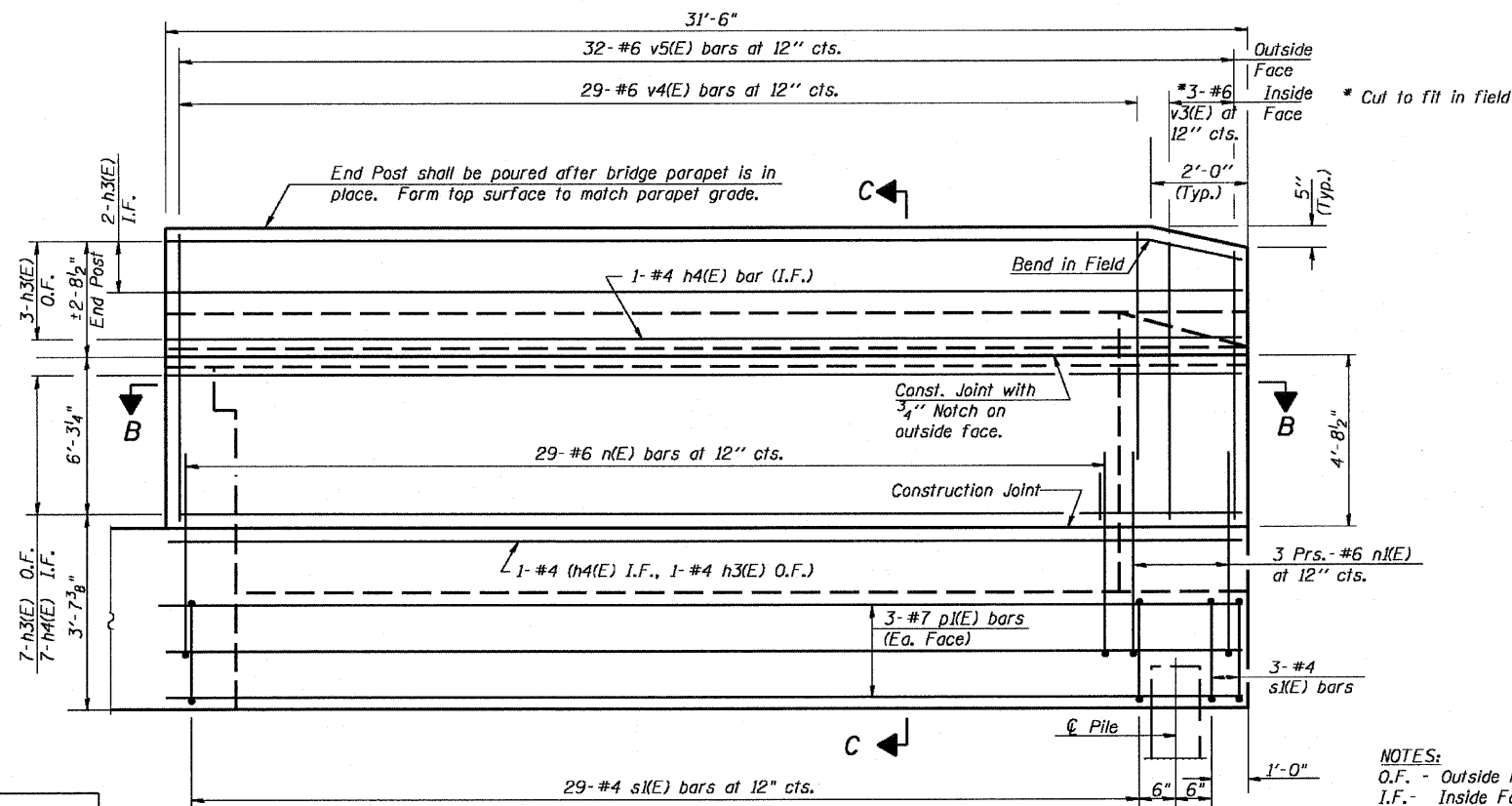


F.A.P. ROUTE NO.	SECTION	COUNTY	TOTAL SHEETS	SHEET NO.
786	109 BR	La Salle	351	263

SHEET NO. 63  
89 SHEETS



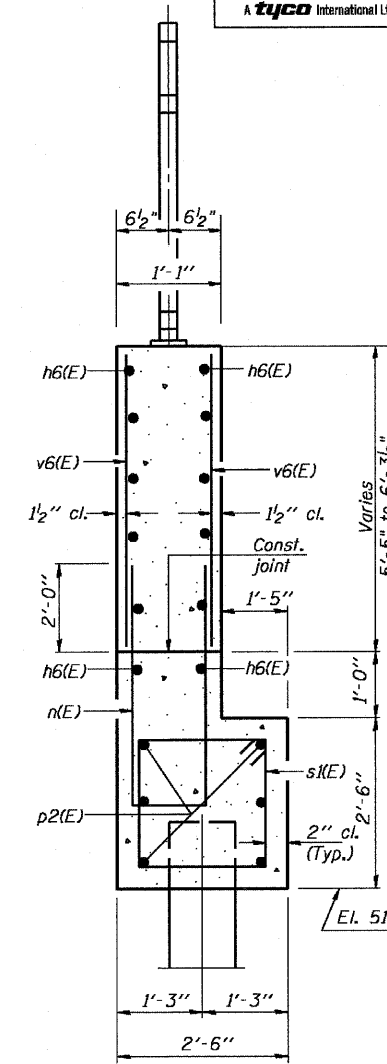
VIEW F-F  
WEST WING WALL ELEVATION



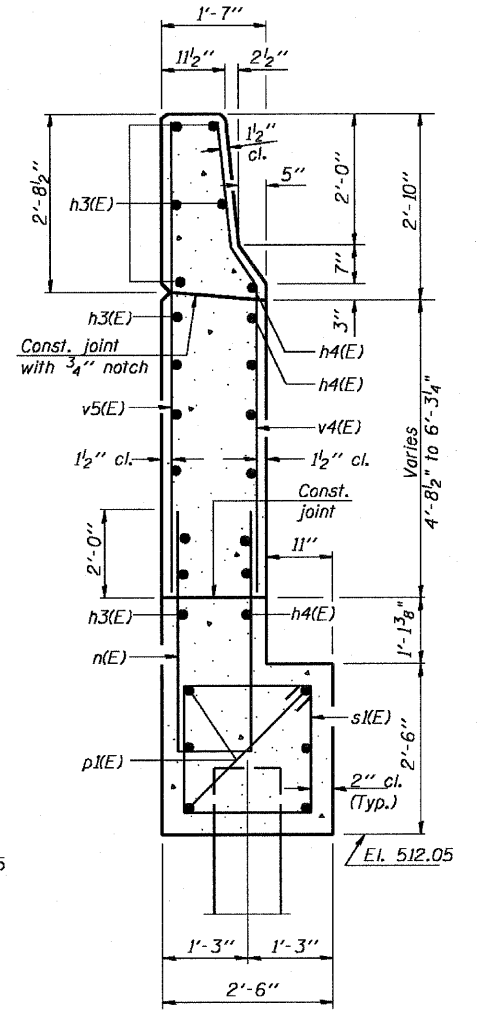
VIEW E-E  
EAST WING WALL ELEVATION  
N.T.S.

DESIGNED	- RJC
CHECKED	- CLS
DRAWN	- JHR
CHECKED	- RJC

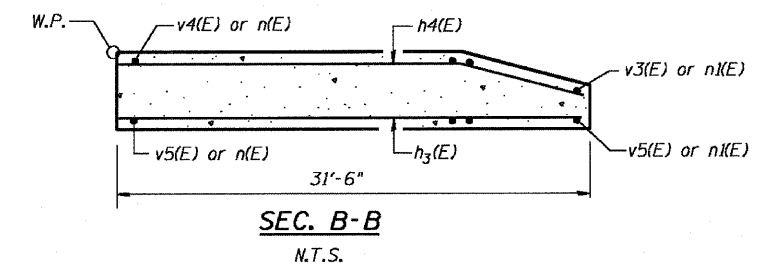
NOTES:  
O.F. - Outside Face  
I.F. - Inside Face  
Quantity of concrete in end post included with Concrete Superstructure on sheet 22 of 92.



SECTION D-D  
N.T.S.



SECTION C-C  
N.T.S.



SEC. B-B  
N.T.S.

NORTH ABUTMENT DETAILS 2  
IL. 170 F.A.P. 786 OVER  
ILLINOIS RIVER AT SENECA  
PUBLIC WATERS  
LA SALLE COUNTY, SECTION 109 BR  
STATION 79+04.42  
STRUCTURE NO. 050-0246