

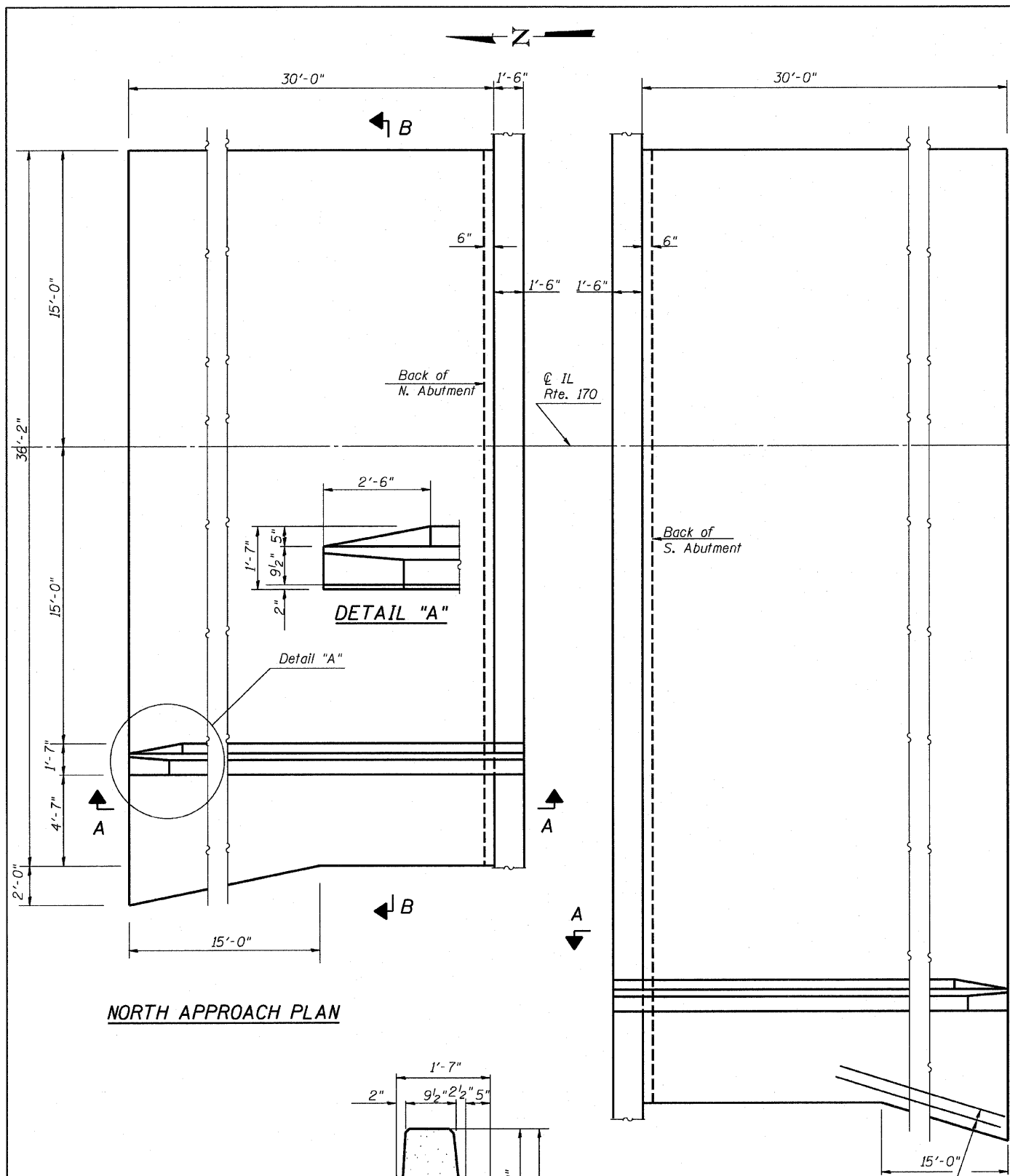
F.A.P. RTE.	SECTION	COUNTY	TOTAL SHEETS	SHEET NO.
786	(109) BR	LASALLE	351	200
STA.		TO STA.		
FED. ROAD DIST. NO.		ILLINOIS FED. AID PROJECT		

BILL OF MATERIAL

For Approach Parapets only

Bar	No.	Size	Length	Shape
d(E)	70	#5	5'-7"	
d1(E)	70	#5	9'-8"	
e(E)	16	#4	3'-0"	—
e1(E)	2	#8	2'-5"	—
Reinforcement Bars, Epoxy Coated			Pound	1615
Concrete			Cu. Yds.	7

Reinforcement bars designated (E) shall be epoxy coated.
Bars indicated thus 1 x -#5 etc. indicates 1 line of bars with lengths per line.



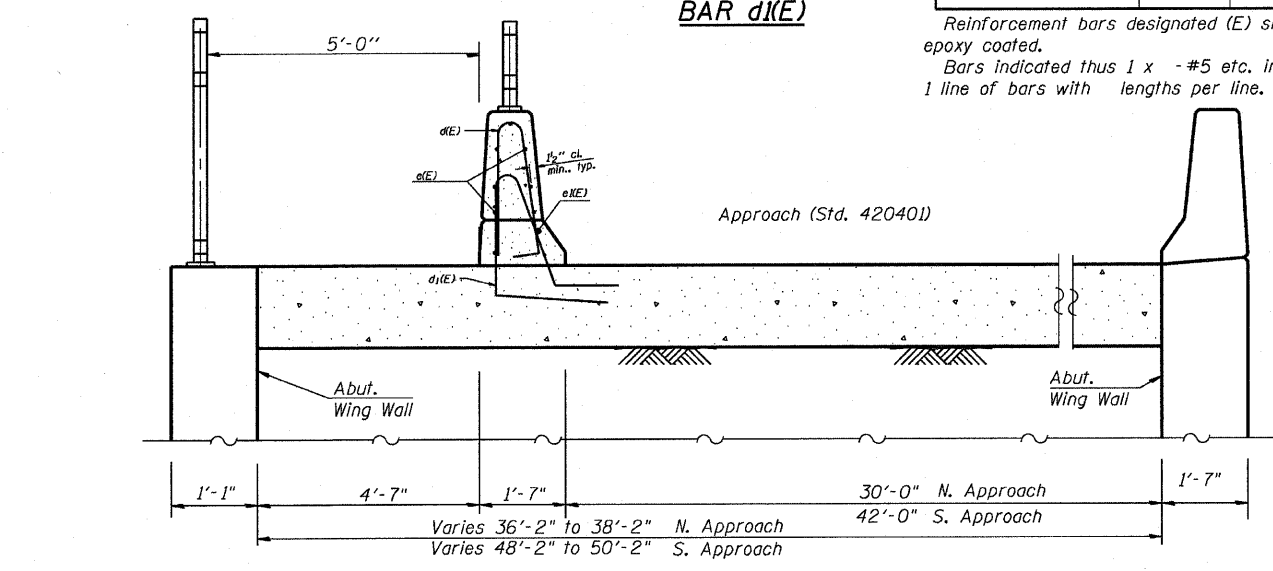
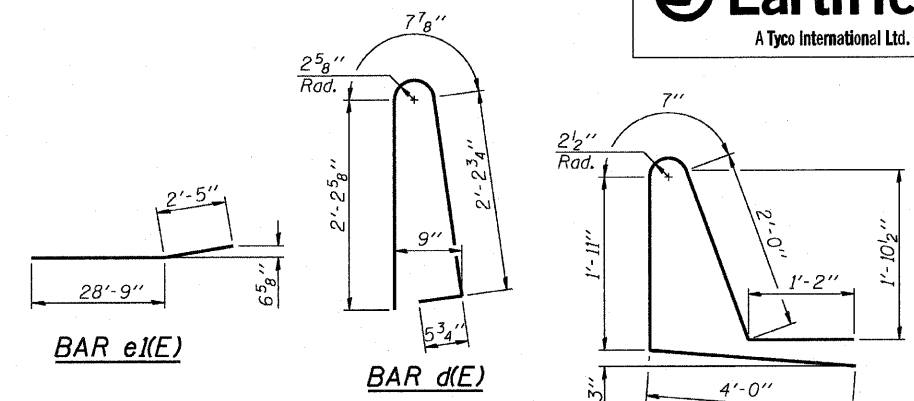
NORTH APPROACH PLAN

SOUTH APPROACH PLAN

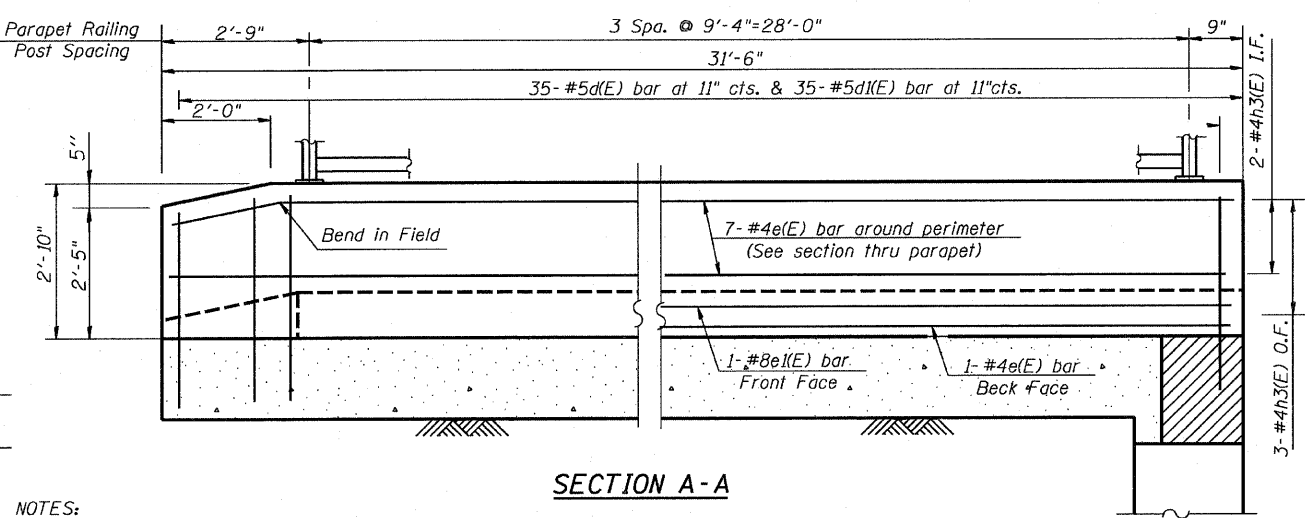


PARAPET SECTION AT APPROACH

*2-#5a1 bars @ 12" cts. Top (Typ.)
*3-#9a bars @ 6" cts. Bottom (Typ.)



SECTION B-B



SECTION A-A

NOTES:
For Bridge Approach Details see Standard 420401-03
O.F. = Outside Face
I.F. = Inside Face
For Bicycle Railing and Parapet Railing Details See Sheet 37
*Cost of additional bars to be included in the cost Bridge Approach Pavement Special

REVISIONS	
NAME	DATE

ILLINOIS DEPARTMENT OF TRANSPORTATION
BRIDGE APPROACH PAVEMENT SPECIAL
SCALE: _____
DATE: JUNE 29, 2007
DRAWN BY: JHR
CHECKED BY: RJC

PLOT DATE = 10/14/2007
FILE NAME = BRIDGE
PLOT SCALE = 1/8"=1'-0"
USER NAME = pcc/jet