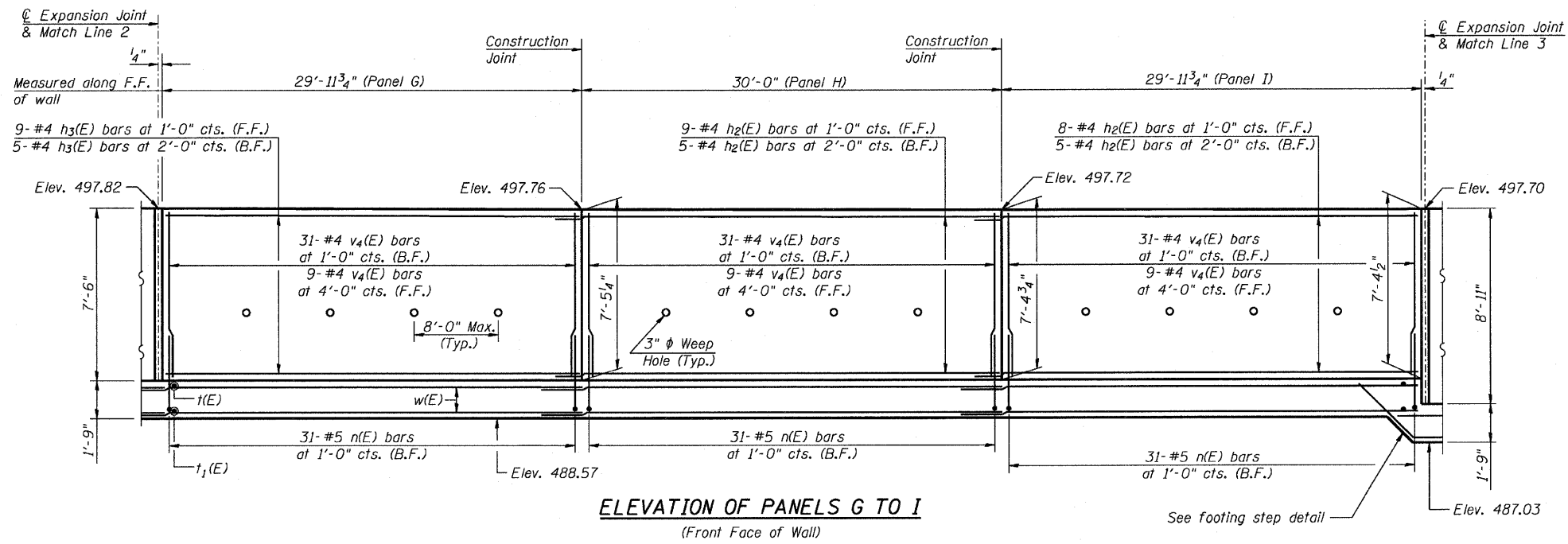


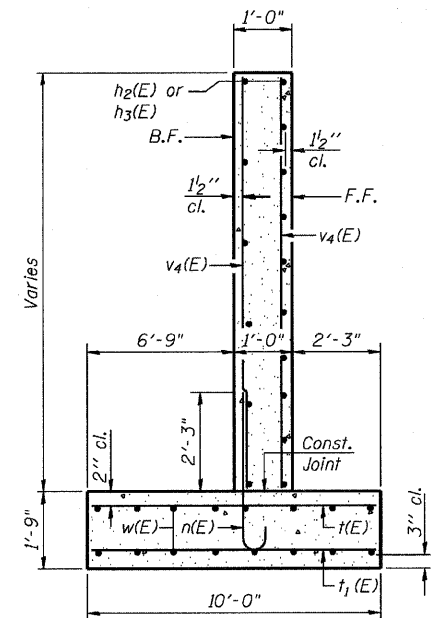
STATE OF ILLINOIS
DEPARTMENT OF TRANSPORTATION

| | | | | | |
|-----------------------|----------|-------------------|-----------------|-----------|-------------|
| F.A.P. ROUTE NO. | SECTION | COUNTY | TOTAL SHEETS | SHEET NO. | SHEET NO. 5 |
| 786 | 109 BR | La Salle | 351 | 196 | 6 SHEETS |
| FED. ROAD DIST. NO. 7 | ILLINOIS | FED. AID PROJECT- | Contract #66607 | | |



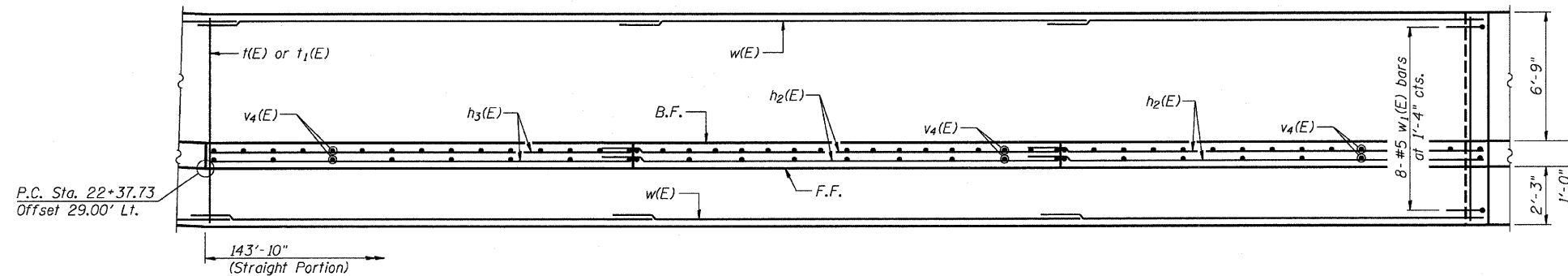
ELEVATION OF PANELS G TO I
(Front Face of Wall)

See footing step detail



SECTION THRU WALL

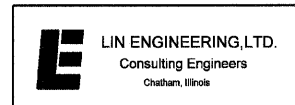
MIN BAR LAP
#4 Bars = 1'-8"
#5 Bars = 2'-2"



FOOTING PLAN OF PANELS G TO I

Note:
See Sheet 6 of 6 for Joint Details, Bar Bends and Bar List.

| | |
|----------|-----|
| DESIGNED | JVR |
| CHECKED | DLS |
| DRAWN | JVR |
| CHECKED | DLS |



PANELS G, H & I
RETAINING WALL
RIVER ROAD
SECTION 109 BR
LA SALLE COUNTY