

Bench Mark: Chiseled square on N-E side of manhole rim at the intersection of IL 170 and South Street. Elevation 508.497.

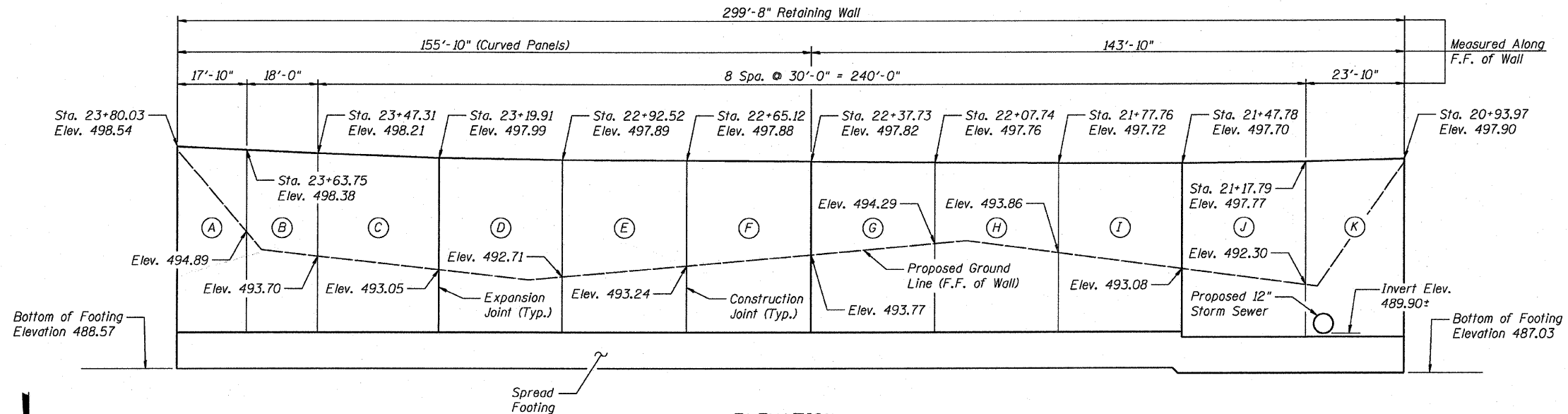
Existing Structure: None.

STATE OF ILLINOIS
DEPARTMENT OF TRANSPORTATION

F.A.P. ROUTE NO.	SECTION	COUNTY	SHEET	SHEET NO.
786	109 BR	La Salle	351	192

6 SHEETS

Contract #66607



INDEX OF SHEETS

1. General Plan
2. General Data
3. Panels A, B & C
4. Panels D, E & F
5. Panels G, H & I
6. Panels J & K

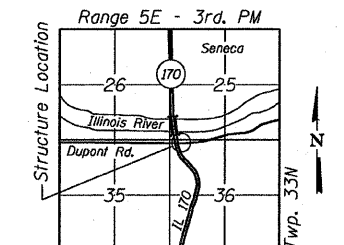
DESIGN SPECIFICATIONS

2002 AASHTO

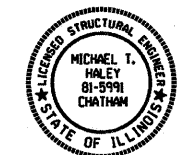
DESIGN STRESSES

FIELD UNITS

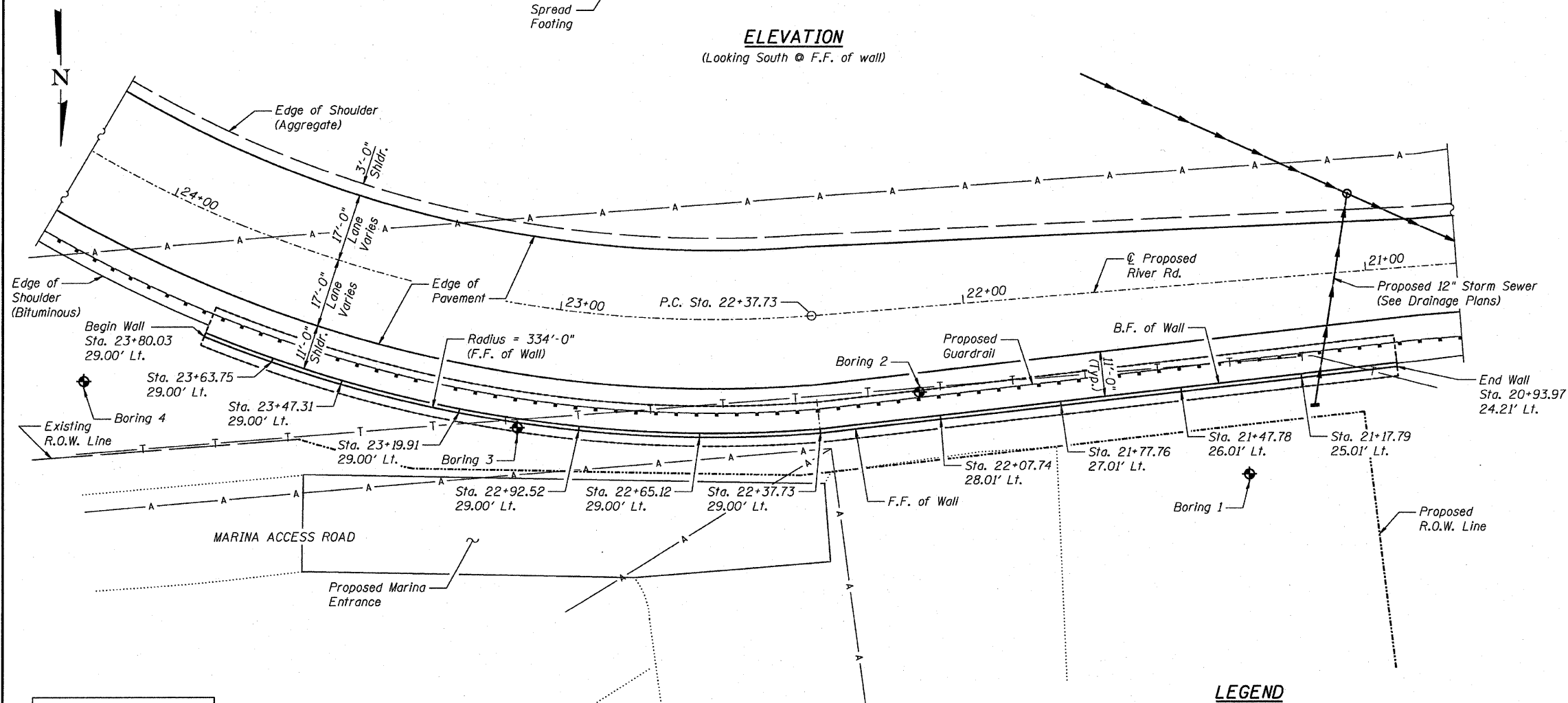
f'c = 3,500 psi
fy = 60,000 psi (Reinforcement)



LOCATION SKETCH



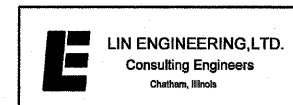
Michael T. Haley
Michael T. Haley
Licensed Structural Engineer
State of Illinois No. 81-5991
Expires 11/30/2008
10-5-07
Date



DESIGNED	JVR
CHECKED	DLS
DRAWN	JVR
CHECKED	DLS

LEGEND

- T Telephone
- A Aerial Elec.
- Storm Sewer
- Soil Borings
- F.F. - Front Face
- B.F. - Back Face
- E.F. - Each Face



GENERAL PLAN
RETAINING WALL
RIVER ROAD
SECTION 109 BR
LA SALLE COUNTY

Note:
Offsets are measured from the centerline of proposed River Rd. to the front face of wall.