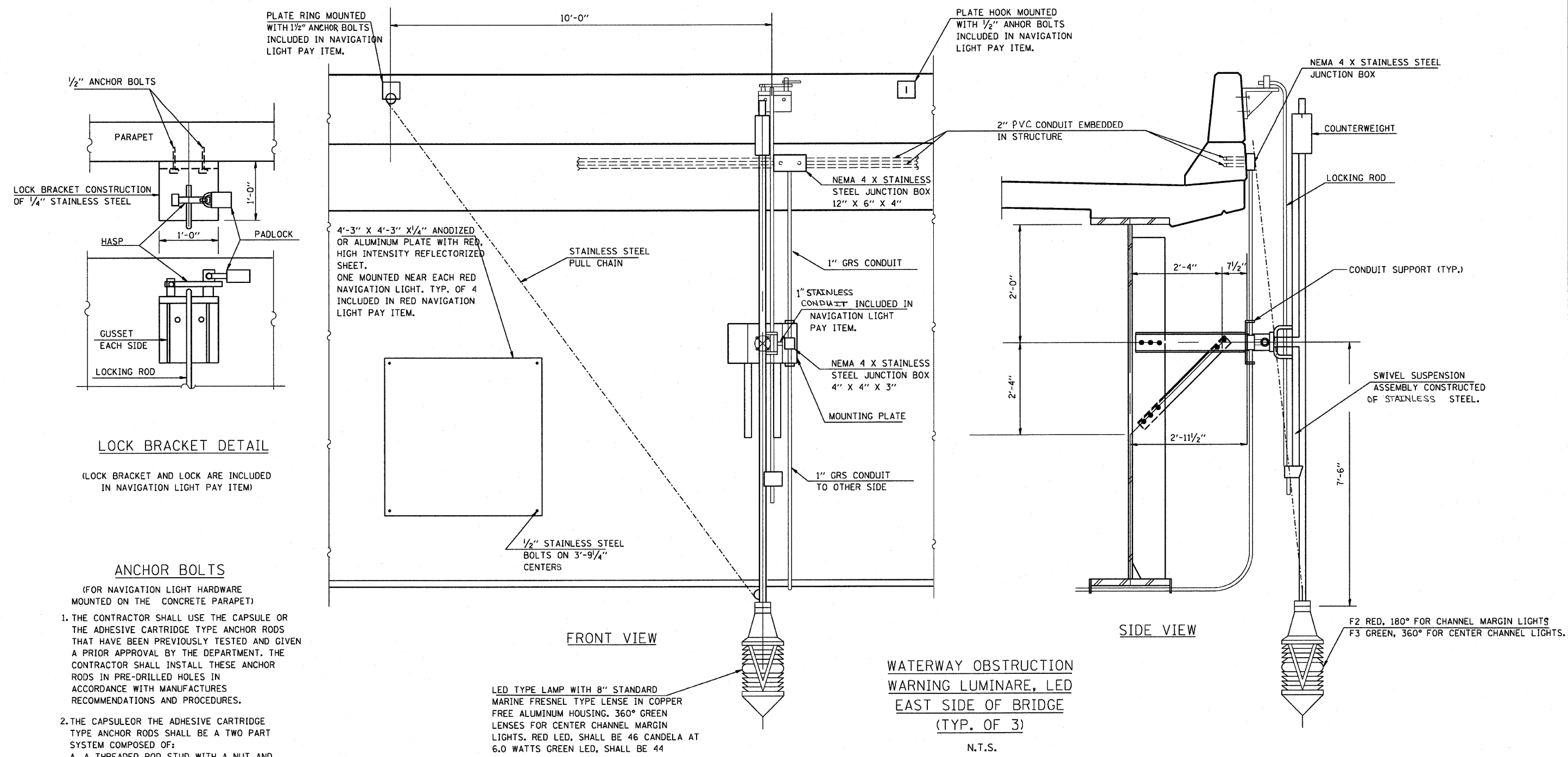


F.A.P. RTE.	SECTION	COUNTY	TOTAL SHEETS	SHEET NO.
786	(109) BR	LASALLE	351	187
STA.		TO STA.		
FED. ROAD DIST. NO.		ILLINOIS	FED. AID PROJECT	



1. THE CONTRACTOR SHALL USE THE CAPSULE OR THE ADHESIVE CARTRIDGE TYPE ANCHOR RODS THAT HAVE BEEN PREVIOUSLY TESTED AND GIVEN A PRIOR APPROVAL BY THE DEPARTMENT. THE CONTRACTOR SHALL INSTALL THESE ANCHOR RODS IN PRE-DRILLED HOLES IN ACCORDANCE WITH MANUFACTURERS RECOMMENDATIONS AND PROCEDURES.
2. THE CAPSULE OR THE ADHESIVE CARTRIDGE TYPE ANCHOR RODS SHALL BE A TWO PART SYSTEM COMPOSED OF:
- A. A THREADED ROD STUD WITH A NUT AND WASHER OF THE TYPE SPECIFIED.
 - B. A SEALED GLASS CAPSULE OR A SEALED GLASS ADHESIVE CARTRIDGE CONTAINING PREMEASURED AMOUNTS OF THE ADHESIVE CHEMICAL.

REVISIONS		ILLINOIS DEPARTMENT OF TRANSPORTATION
NAME	DATE	
		ELECTRICAL DETAILS IL 170 BRIDGE REPLACEMENT AT SENECA

SCALE: 1" = 50'
DATE: OCTOBER, 2007

DRAWN BY: CJO
CHECKED BY: JCL

PLOT DATE = 10/1/2007
PLOT SCALE = 1" = 50'
USER NAME = project