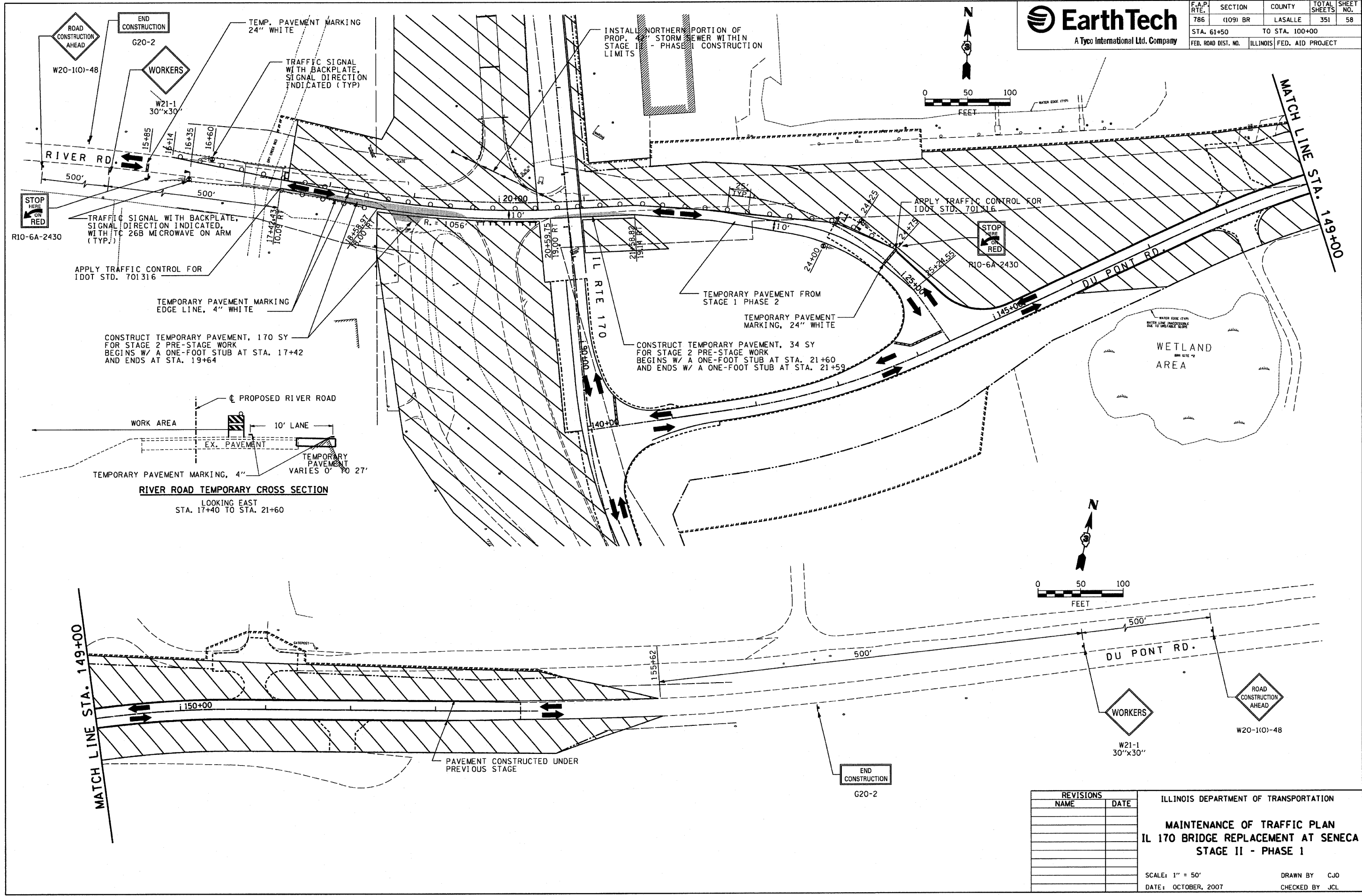




F.A.P. RTE.	SECTION	COUNTY	TOTAL SHEETS	SHEET NO.
786	(109) BR	LASALLE	351	58
STA. 61+50		TO STA. 100+00		
FED. ROAD DIST. NO.		ILLINOIS FED. AID PROJECT		



PLOT DATE = 10/11/2007  
 PLOT FILE = 101110.DWG  
 PLOT SCALE = 1/8" = 1'-0"  
 USER NAME = project

REVISIONS	
NAME	DATE

ILLINOIS DEPARTMENT OF TRANSPORTATION

**MAINTENANCE OF TRAFFIC PLAN**

**IL 170 BRIDGE REPLACEMENT AT SENECA**

**STAGE II - PHASE I**

SCALE: 1" = 50'

DATE: OCTOBER, 2007

DRAWN BY: CJO

CHECKED BY: JCL