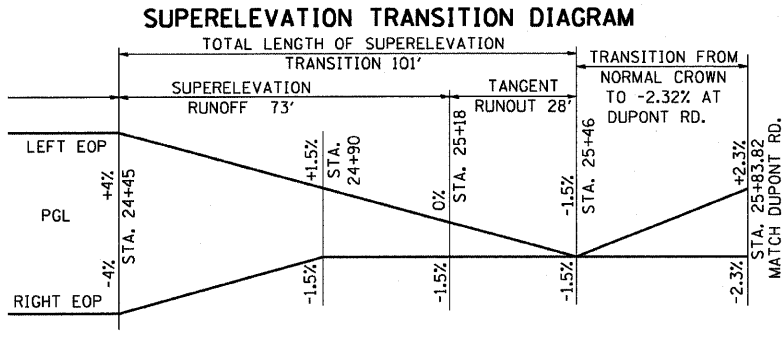
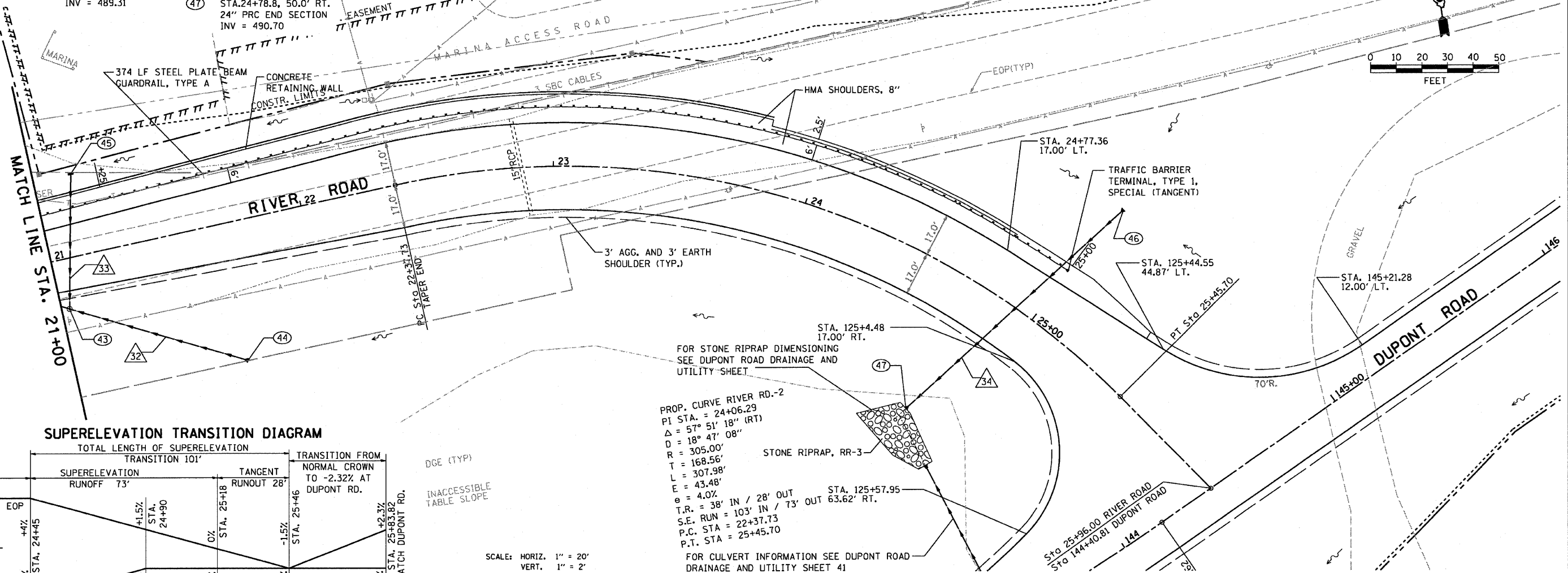




F.A.P. RTE.	SECTION	COUNTY	TOTAL SHEETS	SHEET NO.
786	(109) BR	LASALLE	351	48
STA. 21+00		TO STA. 25+96		
FED. ROAD DIST. NO.		ILLINOIS	FED. AID PROJECT	

- (43) STA.20+03, 19.5' RT. MH, TYPE A, 6' DIA. TYPE 1 FRAME, C.L. RIM = 498.29 NW. INV. = 489.16 SE. INV. = 489.16 NE. INV. = 489.48
- (44) STA.21+59.3, 51.3' RT. 42" PRC END SECTION INV = 489.31
- (45) STA. 20+15. 32' LT. INLET, TYPE A TYPE 8 GRATE RIM = 491.40 S. INV = 489.98
- (46) STA.25+01.3, 48.0' LT. 24" PRC END SECTION INV = 490.92
- (47) STA.24+78.8, 50.0' RT. 24" PRC END SECTION INV = 490.70
- 32 65', 42" SS, TYPE 2, RCCP, @ 0.2%, TBF = 0 CY
- 33 49', 12" SS, TYPE 2, @ 1.0%, TBF = 38.7 CY
- 34 110', 24" SS, TYPE 2, @ 0.2%, TBF = 46.4 CY



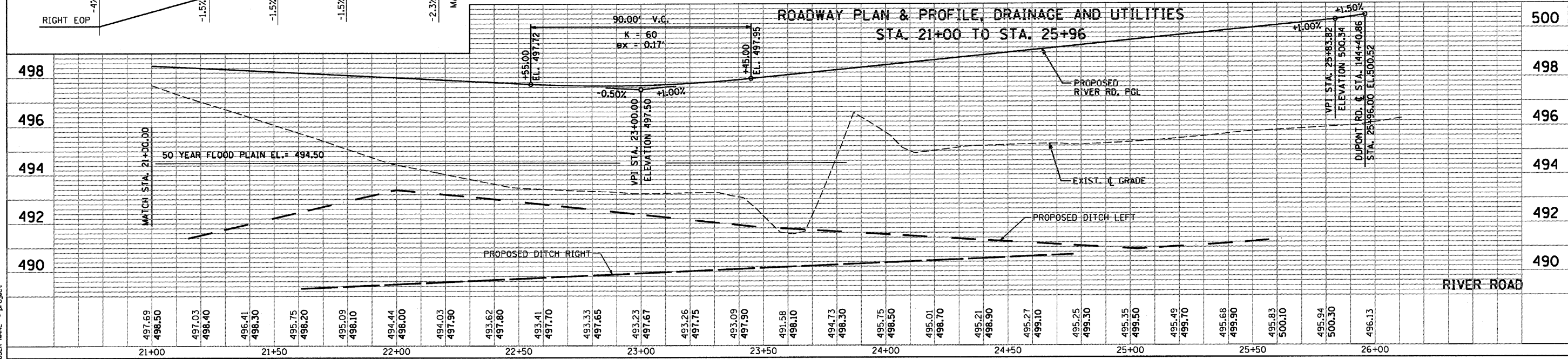
PROP. CURVE RIVER RD.-2
 PI STA. = 24+06.29
 $\Delta = 57^\circ 51' 18''$ (RT)
 $D = 18^\circ 47' 08''$
 $R = 305.00'$
 $T = 168.56'$
 $L = 307.98'$
 $E = 43.48'$
 $\theta = 4.0\%$
 T.R. = 38' IN / 28' OUT
 S.E. RUN = 103' IN / 73' OUT 63.62' RT.
 P.C. STA = 22+37.73
 P.T. STA = 25+45.70

FOR STONE RIPRAP DIMENSIONING SEE DUPONT ROAD DRAINAGE AND UTILITY SHEET

FOR CULVERT INFORMATION SEE DUPONT ROAD DRAINAGE AND UTILITY SHEET 41

SCALE: HORIZ. 1" = 20'
 VERT. 1" = 2'

ROADWAY PLAN & PROFILE, DRAINAGE AND UTILITIES
 STA. 21+00 TO STA. 25+96



PLAN	DATE	BY
SURVEYED		
PLOTTED		
CHECKED		
RT. OF WAY CHECKED		
NO. _____		
NOTE BOOK		
NO. _____		
FILE NAME		
NO. _____		

PROFILE	DATE	BY
SURVEYED		
PLOTTED		
CHECKED		
BL. NOTED		
STRUCTURE		
NOTATION		
NO. _____		

PLOT DATE = 10/11/2007
 FILE NAME = #FILE#
 PLOT SCALE = #SCALE#
 USER NAME = #PROJECT#