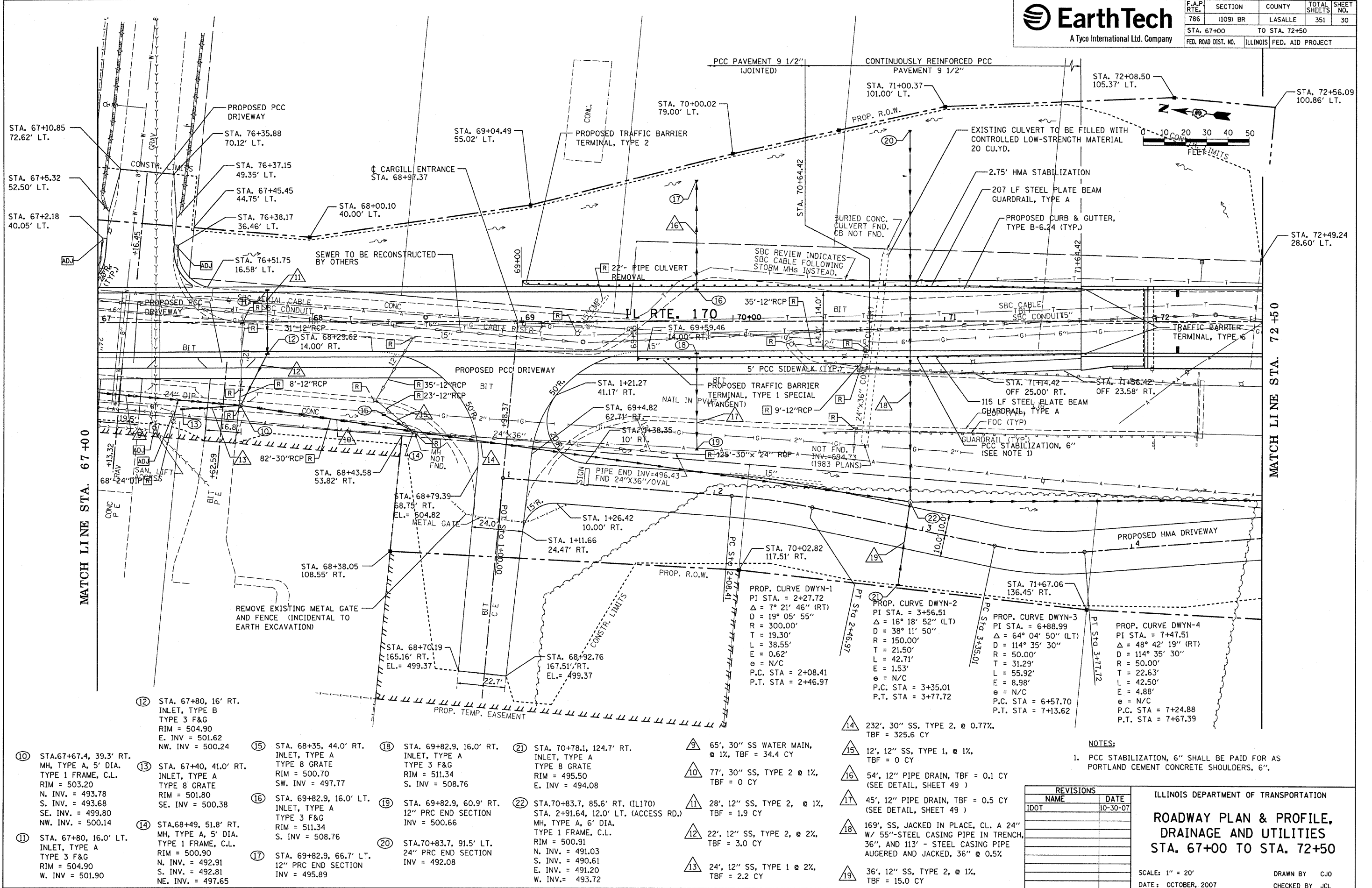


F.A.P. RTE.	SECTION	COUNTY	TOTAL SHEETS	SHEET NO.
786	(109) BR	LASALLE	351	30
STA. 67+00		TO STA. 72+50		
FED. ROAD DIST. NO.		ILLINOIS FED. AID PROJECT		



NOTES:
1. PCC STABILIZATION, 6" SHALL BE PAID FOR AS PORTLAND CEMENT CONCRETE SHOULDERS, 6".

REVISIONS	
NAME	DATE

ILLINOIS DEPARTMENT OF TRANSPORTATION
**ROADWAY PLAN & PROFILE,
DRAINAGE AND UTILITIES
STA. 67+00 TO STA. 72+50**

SCALE: 1" = 20'
DATE: OCTOBER, 2007

DRAWN BY: CJO
CHECKED BY: JCL

REVISED 10-30-07 MJ

PLOT DATE: Oct 30, 2007 09:44:41 AM
 FILE NAME: c:\projects\66607\2\consult\phase 2\ah0801.dgn
 PLOT SCALE: 1" = 20'
 USER NAME: schwenker