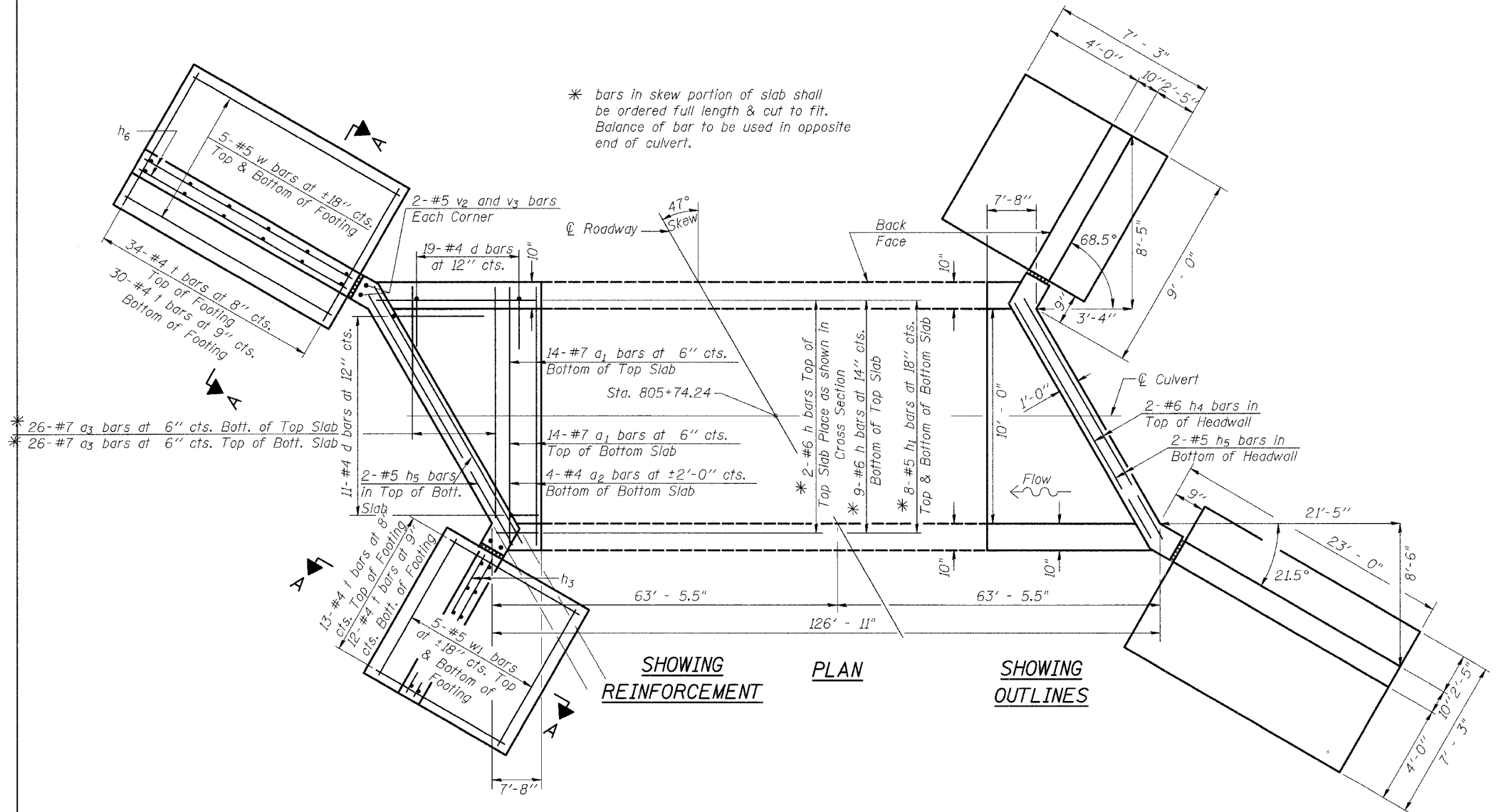


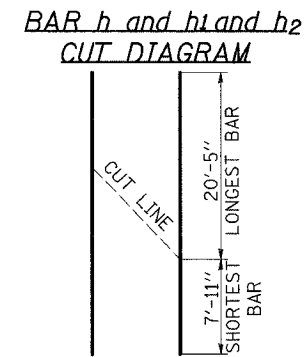
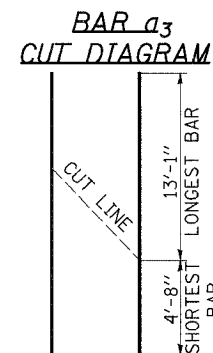
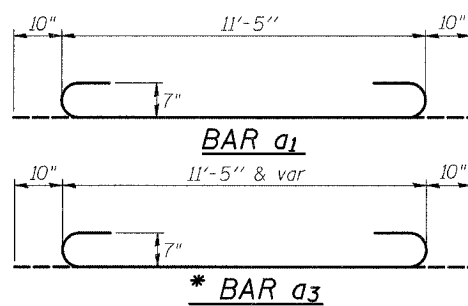
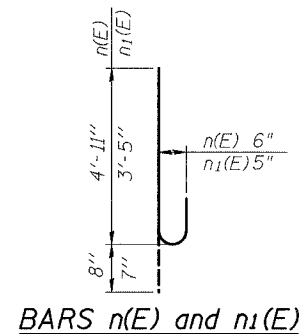
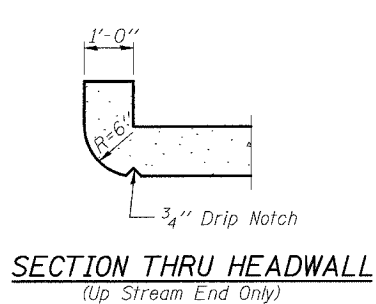
F.A.P. RTE.	SECTION	COUNTY	TOTAL SHEETS	SHEET NO.
642	11T	CARROLL	79	45
STA.		TO STA.		
FED. ROAD DIST. NO.		ILLINOIS	FED. AID PROJECT	

10'x8' Precast Box Culvert End Sections RT. & LT. STA. 805 + 74.24



BILL OF MATERIAL

Bar	No.	Size	Length	Shape
a ₁	56	#7	13'-1"	U
a ₂	10	#4	10'-10"	—
a ₃	52	#7	17'-9"	U
d	74	#4	5'-6"	L
h	11	#6	28'-4"	—
h ₁	16	#5	28'-4"	—
h ₂	16	#6	28'-4"	—
h ₃	28	#4	8'-0"	—
h ₄	4	#6	14'-6"	—
h ₅	8	#5	14'-6"	—
h ₆	28	#4	22'-0"	—
n(E)	32	#6	5'-7"	U
n ₁ (E)	36	#5	4'-0"	U
f	178	#4	7'-0"	—
v	90	#4	8'-3"	—
v ₁	90	#5	2'-11"	—
v ₂	8	#5	9'-0"	—
v ₃	8	#5	6'-7"	—
v ₄	16	#5	11'-9"	—
v ₅	36	#5	4'-0"	—
v ₆	36	#5	9'-11"	—
w	20	#5	22'-0"	—
w ₁	20	#5	8'-0"	—
Class "SI" Concrete			Cu Yd	82.69
Reinforcement Bars, Epoxy Coated			Pound	418.55
Reinforcement Bars			Pound	9196.07



PLOT DATE = Wed Oct 18 15:22:53 2007
 FILE NAME = c:\pwworkspace\10x8x8\10x8boulv.dgn
 PLOT SCALE = 1/8" = 1'-0"
 USER NAME = ouhmanb7