

F.A.P. RTE.	SECTION	COUNTY	TOTAL SHEETS	SHEET NO.
642	11T	CARROLL	79	1

PROJECT ENGINEER: REBECCA MARRUFFO

SENIOR SQUAD LEADER: DAWN PERKINS (815)-284-5948

INDEX

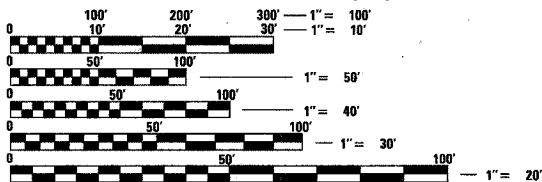
- 1 COVER SHEET
- 2 - 4 SUMMARY OF QUANTITIES
- 5 - 6 GENERAL NOTES
- 7 -12 TYPICAL SECTIONS
- 13 - 15 SCHEDULE OF QUANTITIES
- 16 BITUMINOUS & EARTHWORK SCHEDULE
- 17 - 20 HORIZONTAL & VERTICAL CONTROL
- 21 - 25 PLAN & PROFILE
- 26 - 40 STAGING PLAN SHEETS
- 41 - 48 CULVERT DETAIL SHEETS
- 49 TEMPORARY SOIL RETENTION SYSTEM DETAIL
- 50 PIPE HANDRAIL DETAIL
- 51 - 53 BORING LOGS
- 54 DETAIL OF HOT-MIX ASPHALT SHOULDER AT GUARDRAIL (23.4)  
HOT-MIX ASPHALT SHOULDERS (23.4a)  
DELINEATOR AND POST (37.4)  
INFORMATIONAL WARNING SIGN (FOR NARROW TRAVEL LANES) (39.4)
- 55 TYPICAL BENCHING DETAIL ON EXISTING EMBANKMENT (50.4)  
LETTERING FOR NAME PLATE (89.4)  
TREE REPLACEMENT SCHEDULE (90.4)  
STOP LINE FOR TEMPORARY SIGNALS (99.4)
- 56 EROSION CONTROL DETAILS FOR SILT FENCE (29.2)  
WITNESS MARKER & PERMANENT SURVEY MARKERS, TYPE II (66.2)  
ENTRANCE SIGN FOR USE WITH TEMPORARY SIGNAL (75.2)
- 57 STORM WATER POLLUTION PREVENTION PLAN EROSION CONTROL PLAN (2.1)
- 58 HOT-MIX ASPHALT APPROACHES & MAILBOX TURNOUTS (21.1)
- 59 TYPICAL PAVEMENT MARKINGS (41.1)
- 60 - 61 DETAIL OF PRECAST CONCRETE BOX CULVERTS AND END SECTIONS (71.1)
- 62 DETAILS OF PLANTING AND BRACING TREES (92.1)
- 63 - 79 CROSS-SECTIONS

STATE STANDARDS

- 280001-04 TEMPORARY EROSION CONTROL SYSTEMS
- 442201-03 CLASS C AND D PATCHES
- 482011-03 HMA SHOULDER STRIPS/SHOULDERS WITH RESURFACING OR WIDENING AND RESURFACING PROJECTS
- 515001-02 NAME PLATE FOR BRIDGES
- 542306-01 PRECAST REINFORCED CONCRETE ELLIPTICAL FLARED END SECTION
- 630001-07 STEEL PLATE BEAM GUARDRAIL
- 630201-05 PCC/HMA STABILIZATION AT STEEL PLATE BEAM GUARDRAIL
- 630301-04 SHOULDER WIDENING FOR TYPE 1 (SPECIAL) GUARDRAIL TERMINALS
- 635001 DELINEATORS
- 635006-02 REFLECTOR AND TERMINAL MARKER PLACEMENT
- 635011-01 REFLECTOR MARKER AND MOUNTING DETAILS
- 666001 RIGHT OF WAY MARKERS
- 667101 PERMANENT SURVEY MARKERS
- 701006-02 OFF-ROAD OPERATIONS 2L, 2W, 4.5 M (15') TO 600 MM (24") FROM PAVEMENT EDGE
- 701201-02 LANE CLOSURE 2L, 2W, DAY ONLY, FOR SPEEDS >= 45 MPH
- 701301-02 LANE CLOSURE 2L, 2W, SHORT TIME OPERATIONS
- 701306-01 LANE CLOSURE 2L, 2W, SLOW MOVING OPERATIONS DAY ONLY, FOR SPEEDS >= 45 MPH
- 701311-02 LANE CLOSURE 2L, 2W MOVING OPERATIONS - DAY ONLY
- 701321-09 LANE CLOSURE 2L, 2W, BRIDGE REPAIR WITH BARRIER
- 701901 TRAFFIC CONTROL DEVICES
- 704001-04 TEMPORARY CONCRETE BARRIER
- 720011 METAL POSTS FOR SIGNS, MARKERS & DELINEATORS
- 728001 TELESCOPING STEEL SIGN SUPPORT
- 729001 APPLICATIONS OF TYPES A & B METAL POSTS (FOR SIGNS & MARKERS)
- 780001-01 TYPICAL PAVEMENT MARKINGS
- 781001-02 TYPICAL APPLICATIONS RAISED REFLECTIVE PAVEMENT MARKERS
- 000001-05 STANDARD SYMBOLS, ABBREVIATIONS AND PATTERNS
- 001001-01 AREAS OF REINFORCEMENT BARS
- 001006 DECIMAL OF AN INCH AND OF A FOOT

DESIGN DESIGNATION

ILLINOIS ROUTE 78 180 (24) MINOR ARTERIAL



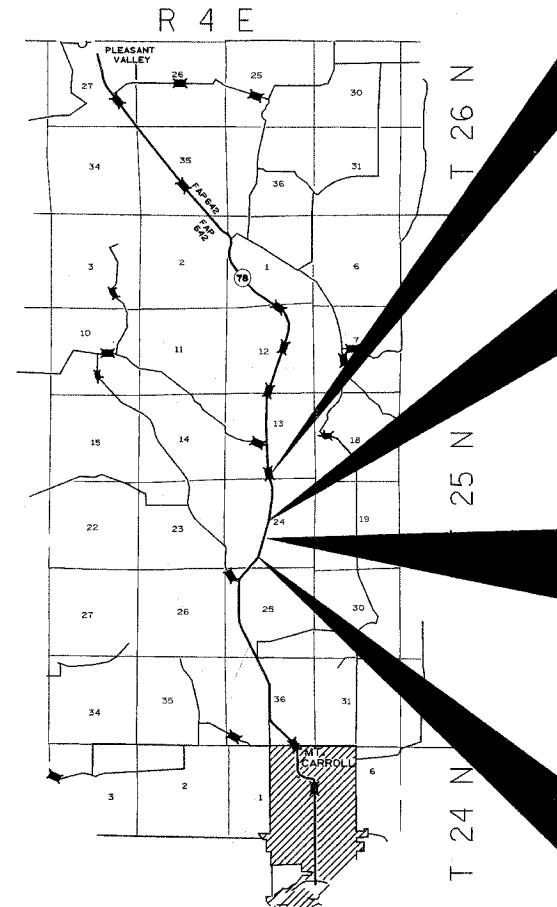
FULL SIZE PLANS HAVE BEEN PREPARED USING STANDARD ENGINEERING SCALES. REDUCED SIZED PLANS WILL NOT CONFORM TO STANDARD SCALES. IN MAKING MEASUREMENTS ON REDUCED PLANS, THE ABOVE SCALES MAY BE USED.

J.U.L.I.E. JOINT UTILITY LOCATION INFORMATION FOR EXCAVATION 1-800-892-0123

CONTRACT NO. 64D82

STATE OF ILLINOIS  
DEPARTMENT OF TRANSPORTATION  
DIVISION OF HIGHWAYS  
**PROPOSED  
HIGHWAY PLANS**

FAP ROUTE 642 (IL 78)  
SECTION 11T  
PROJECT : ACF-0642(120)  
CARROLL COUNTY  
C-92-013-08



IMPROVEMENT BEGINS  
STA.842 + 00

INCLUDES THE REMOVAL AND REPLACEMENT OF THE EXISTING BOX CULVERT  
EXISTING SN-008-1052  
PROPOSED SN-008-1105

IMPROVEMENT ENDS  
STA.844 + 00

IMPROVEMENT BEGINS  
STA.825 + 50

INCLUDES THE REMOVAL AND REPLACEMENT OF THE EXISTING BOX CULVERT  
EXISTING SN-008-1054  
PROPOSED SN-008-1104

IMPROVEMENT ENDS  
STA.827 + 50

IMPROVEMENT BEGINS  
STA.811 + 76

INCLUDES THE REMOVAL AND REPLACEMENT OF THE EXISTING BOX CULVERT  
EXISTING SN-008-1055  
PROPOSED SN-008-1103

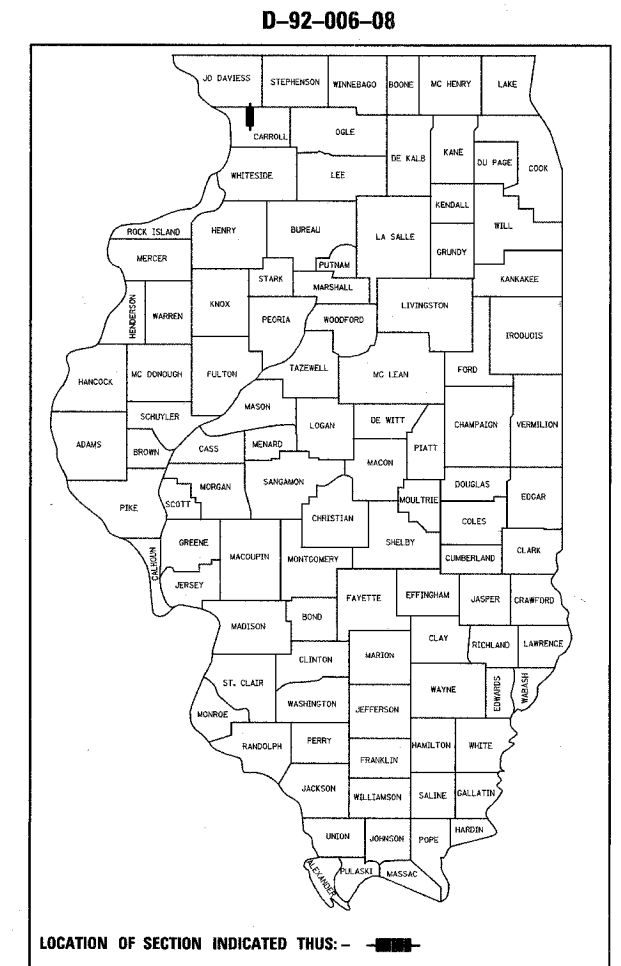
IMPROVEMENT ENDS  
STA.816 + 39.10

IMPROVEMENT BEGINS  
STA.798 + 18.26

INCLUDES THE REMOVAL AND REPLACEMENT OF THE EXISTING BOX CULVERT  
EXISTING SN-008-1056  
PROPOSED SN-008-1102

INCLUDES THE REMOVAL AND REPLACEMENT OF THE EXISTING BOX CULVERT  
EXISTING SN-008-1057  
PROPOSED SN-008-1101

IMPROVEMENT ENDS  
STA.808 + 20.50



LOCATION OF SECTION INDICATED THUS: [thick black bar]

STATE OF ILLINOIS  
DEPARTMENT OF TRANSPORTATION  
DIVISION OF HIGHWAYS

SUBMITTED 10/12 2007

*Debra F. Ryan*  
DEPUTY DIRECTOR OF HIGHWAYS, REGION ENGINEER

December 7, 2007  
*Eric E. Harrell*  
ENGINEER OF DESIGN AND ENVIRONMENT

December 7, 2007  
*Christie M. Reed*  
DIRECTOR OF HIGHWAYS, CHIEF ENGINEER

PRINTED BY THE AUTHORITY OF THE STATE OF ILLINOIS

WOODLAND TOWNSHIP, SECTION 24

GROSS LENGTH OF PROJECT = 4,582 LIN. FT. = 0.87 MILES

NET LENGTH OF PROJECT = 1,865 LIN. FT. = 0.35 MILES